

During a recent file review, a July 2002 report was located and added to the Source Water Assessment Report page.

**State of West Virginia
Source Water Assessment and
Protection Program
Source Water Assessment Report**

**WVAWC - Kanawha Valley
Kanawha County
PWSID: WV3302016**



Prepared by:

**West Virginia Department of Health and Human Resources
Bureau for Public Health
Office of Environmental Health Services
Source Water Protection Unit**

Date: July 29, 2002

**Surface Water Public Water Supply Systems
Source Water Assessment and Protection Program (SWAPP)
Susceptibility Report**

Prepared by the West Virginia
Bureau for Public Health, Source
Water Assessment and Protection
Unit

Date Prepared: Thursday, April 25,
2002

What is the Purpose of a Susceptibility Report?

A susceptibility report identifies the most significant potential contaminant sources that could threaten the quality of your public water supply. Your susceptibility ranking does not imply poor water quality. Regular water tests best reflect actual water quality. This report will be used by public water supply systems with a surface water source. In addition, this report will enhance West Virginia's existing watershed approach to water quality improvement and protection. Table 1 provides you information on your public water supply.

What is SWAPP?

The SWAPP, established under the Safe Drinking Water Act, requires every state to:

- inventory land uses within the recharge areas of all public water supplies;
- assess the susceptibility of drinking water sources to contamination from these land uses; and
- publicize the results to provide support for improved protection of sources.

Table 1: Public Water Supply (PWS) Information

PWS Name	WVAWC-Kanawha Valley
PWS Address	P.O. Box 1906 Charleston WV 25301
PWS ID Number	WV3302016
County	Kanawha
System Type	Community

The West Virginia Bureau for Public Health (BPH) is undertaking this task. The rankings of susceptibility of your intake (s) to potential contamination are listed in Table 2.

Table 2: Intake Information

Facility Name	Source Name	Design Meets Regulations	Susceptibility Ranking
WVAWC-Kanawha Valley	Elk River	Yes	High

The BPH Central Office assessed the source, West Virginia American Water Company (WVAWC)-Kanawha Valley. A file review and field survey were used to conduct the assessment.

What is my Source Water Protection Area (SWPA)?

Unlike ground water aquifers, which have a natural protective layer above them, all surface waters are susceptible to contamination because they are exposed at the surface and lack a protective barrier from contamination. Accidental spills, releases, sudden precipitation events that result in overland runoff, or storm sewer discharges can allow pollutants to readily enter the source water and potentially contaminate the drinking water at the intake. Because of this, the SWPA consists of two types of delineations.

- **Watershed Delineation Area**

The first type of delineation is the Watershed Delineation Area (WSDA). Figure 1 shows the extent of the WSDA, which covers approximately 1,527 square miles in the Elk River Watershed. The WSDA includes the entire watershed area upstream of the intake up to the boundary of the West Virginia state border, or a topographic boundary. The perimeter of the catchment area provides the water to the water supply intake.

- **Zone of Critical Concern**

The second type of delineation is the Zone of Critical Concern (ZCC). Figure 2 shows the ZCC area, which covers approximately 5,969 acres. The ZCC is a corridor along streams within the WSDA area that warrants a more detailed inventory and management due to its proximity to the surface intake and to the susceptibility to potential contaminants. The ZCC is calculated using a mathematical model that accounts for stream flows, gradient, and area topography. The length of the ZCC is based on a five hour time of travel. The ZCC width is 1000 feet from each bank of the principal stream and 500 feet from each bank of the tributaries draining into the principal stream.

What is Susceptibility?

Susceptibility is a measure of your intake's potential for contamination from land uses and activities within the SWPA at concentrations that pose a concern. The purpose of the susceptibility analysis is to provide a pointer to what action a public water system should take to further define and reduce susceptibility. This may include recommendations for a more detailed inventory and assessment, monitoring work, or an indication of the type and intensity of source water and other protection activities needed.

The possibility of a release from potential contaminant sources is greatly reduced if best management practices (BMP's) are used. However, the susceptibility determination for your intake did not take into account whether BMP's are being used.

Susceptibility of a drinking water intake does not mean a customer will drink contaminated water. Water Suppliers protect drinking water by monitoring and treating water supplies, and using BMP's and source water protection measures to ensure that safe water is delivered to the tap.

How Was The Water Supply Susceptibility Determined?

Your intake (s) susceptibility is based on the following:

Resource Characterization

The purpose for conducting the Resource Characterization analysis of the delineated SWPA is to obtain an understanding of its physical, biological, chemical, and hydrological characteristics. Four resource characteristics were evaluated:

- The potential for surface runoff to occur;
- The ease that surface runoff transport material can be delivered into the stream;
- The movement through the SWAP area; and
- The biological and chemical health of the surface water resource in the SWAP area.

- **Potential for Surface Runoff to Occur**

The soil types present in the watershed area and the associated soil properties have a direct influence on the potential for surface runoff to occur. As infiltration rate of soil increases, (more precipitation soaking in rather than running off) the contaminant load associated with the reduced runoff should decrease. Table 3 provides a summary of the associated soil groups.

Table 3: Summary of Soil Associations in the WSDA

Soil Associations	Soil Drainage	Topographic Setting
Kanawha-Hackers	Well drained	Gently sloping
Gilpin-Upshur-Vandalia	Well drained	Gently sloping to very steep
Clymer-Gilpin-Dekalb	Well drained	Very steep
Buchanan-Chavies-Pope	Moderate to Well drained	Steep to nearly level
Gilpin-Upshur-Buchanan	Moderate to Well drained	Very steep
Gilpin-Dekalb-Buchanan	Moderate to Well drained	Very steep
Calvin-Belmont-Mecksville	Well drained	Gently sloping to very steep
Potomac-Tioga-Holly	Well and Poorly drained	Nearly level
Mandy-Snowdog-Gauley	Moderate to Well drained	Strongly sloping to very steep
Cateache-Shours-Belmont	Well drained	Gently sloping to very steep

- **Ease of movement of material into the Stream System (Rate of Overland Material Transport):**

The size, shape, and slope of the SWAP area have a direct influence on material transported by surface runoff. In general, the longer the overland travel distance and travel time that surface runoff has taken in order to reach a stream channel, the greater the chance it has to deposit and filtrate the contaminants that may occur. Table 4 provides an analysis of the size, shape, and slope.

Table 4: Hydrologic Setting

Size of WSDA Area (mi ²)	1,527
Shape of WSDA Area	Long & Narrow
Stream Length (Main Stem) (mi)	186
Average Watershed Slope	10 to 30 %

- **Movement of Water through the Watershed Area**

A number of physical and natural factors can influence the movement of water through the SWAP area. The pattern and development of the drainage network of the SWAP area directly influence the rate of water movement. Evaluation of the hydrologic cycle will provide an indication of the amount of annual rainfall that is absorbed into the ground or becomes runoff. Table 5 summarizes the total mileage of streams contained in the WSDA, average stream gradients of the main stem, average rainfall, the nearest relevant USGS stream gauge, distance to gauge, topographic position of gauge, annual mean discharge, high flow, and low flow.

Table 5: Movement of Water

Number of Stream Miles	2,051
Average Stream Gradient (Main Stem)	11.13 ft/mi
Average Rainfall	44
Nearest Relevant USGS Stream Gauge	031197000
Distance to Relevant USGS Stream Gauge (mi)	22
USGS Stream Gauge Topographic Position	Upstream
Annual Mean Discharge (cfs)	3,259
High Flow (cfs)	158,000
Low Flow (cfs)	595

- **Review of Water Quality Data**

In order to characterize the condition of the surface water within the watershed, the available chemical and biological water quality data was reviewed. This data was collected as part of the BPH and the West Virginia Department of Environmental Protection (DEP) implementation of the federal Safe Drinking Water Act and Clean Water Act. Water quality data was evaluated to help provide direct pointers to a source of contamination and to direct the focus for additional source evaluations. Additionally, immediate source water protection efforts will be identified by this review.

Available water quality data includes test results from treated drinking water, finished water, and untreated source water (raw water) conducted by the water supplier; ambient water chemistry; biological criteria and monitoring (bacteria, macroinvertebrates and fish); and habitat evaluation. The sampling requirements for public water systems vary depending on the type of system and the federal regulated testing requirements. Therefore, a lack of water quality impacts may indicate the lack of a certain type of sampling rather than a lack of contamination.

Summary of Raw and Finished Water Quality Results from Public Water System

Water sampling conducted by West Virginia American Water Company indicates that raw water turbidity maximums appear to have increased significantly over the past two years, based on the five years of data reviewed. The WVAVC-Kanawha Valley Plant takes a raw water bacteriological sample almost on a daily basis; which is not required by regulation. These tests indicate elevated levels during periods of high water.

There have been no occasions when the observed concentrations have been above the established MCLs for these parameters in the finished water. For additional information on the finished water quality, please review the consumer confidence report for a yearly summary of the water quality.

Summary of Chemical and Biological Water Quality Results from the West Virginia DEP

In 2000, the DEP conducted biological and chemical water quality monitoring on 153 streams totaling 832 miles in the Elk River watershed for the 305b report, as a requirement of the federal Clean Water Act. Two hundred and twenty miles (26%) were fully supporting their overall designated uses. Considering major and moderate/minor impacts, the principal causes of impairment in the watershed are metals, siltation, and habitat alteration (non-flow). Additional significant causes of impairment are pH and Fecal Coliform. Considering major and moderate/minor impacts, the principal sources of pollution in the watershed are unknown source, petroleum activities, and abandoned mining. During this reporting cycle, 460.41 miles of stream in the Elk River watershed were monitored for toxics. Of these, 65.09 miles (14.1%) had elevated levels of toxics.

The DEP performed an ecological assessment of the Elk River and its tributaries in 1997. Assessments at each site included measurements of physical attributes of the stream and riparian zone, observations of activities and disturbances in the surrounding area, water quality analysis, and benthic macroinvertebrate collection. Of the 145 sites sampled, 26 were impaired, 14 were potentially impaired, 95 were unimpaired, and 10 were collected by incomparable methods and could not be scored.

Summary of Other Available Chemical and Biological Water Quality Data

Not Available

POTENTIAL SIGNIFICANT CONTAMINANT SOURCES (PSCS'S):

Inventory of Potential Significant Contaminant Sources

The purpose of providing an inventory of certain types of land uses, potential significant contaminant sources, and activities within the SWAP area is to aid in reducing the risk posed to the public drinking water supply. The following subsections provide information regarding the methodology used to generate the inventories.

The inventory portion of the SWAP consists of two steps:

- The first step is the broad inventory based primarily on regulated and existing databases. The inventory consists of a general land use analysis, the identification of regulated activities in the delineated WSDA areas, and an analysis of road and rail crossings adjacent to the streams in the WSDA area.

- The second step is the detailed inventory of PSCS's in the ZCC. The detailed source inventory is conducted to identify PSCS's that were not captured in the broad regulated source inventory and to field verify the PSCS's in the ZCC. PCS's located during the inventory are found on Figure 2.

A detailed risk-assessment of the PSCS's was beyond the scope of this survey because of minimal data and resources. Local decision makers should do the detailed risk analysis because they are better suited to make the bridge from assessment work to protective strategies. The West Virginia SWAP program can provide guidance to the decision makers and help in prioritizing the PSCS sources.

- **Existing (primarily regulated) Database Review**

Table 6: Summary of existing regulated PSCS's

Table 6 is a summary of existing PSCS's based on public information obtained from various federal, state, and local agencies that maintain environmental regulatory databases. These databases provide information about the regulatory status of a property and incidents involving use, storage, spilling or transportation of oil, and hazardous materials.

	NUMBER	PERCENT
WSDA	2043	100
ZCC	27	1.32

Table 7: Summary of PSCS within the ZCC

- **Summary of the Detailed Inventory**

Table 7 is a summary of the detailed inventory of potential contaminant sources in the ZCC. The detailed source inventory was conducted to identify PSCS's that were not identified in the existing database review and to verify the location of the PSCS within the ZCC. Additional potential significant contaminant sources that were identified in detailed inventories of the ZCC consist of commercial activities (Shell Gas Station, Sun Belt Rentals), municipal operations (City of Charleston Sewage Lift Station, Road Salt Storage), and industrial operations (Allegheny Power Company, Pennzoil Manufacturing Plant). Of these PSCS's, some of the industrial sources may have large volumes of potential contaminant stored.

Potential Contaminant Source	TOTAL PSCS'S	PERCENT
AGRICULTURE	1	1.28
RESIDENTIAL	0	0
MUNICIPAL	8	10.26
COMMERCIAL	48	61.54
INDUSTRIAL	21	26.92

- **Transportation Network**

A summary of the transportation network is shown in Table 8. This information can be used to aid in planning for transportation related accidents that could result in contamination of the source water in the delineated WSDA. Table 9 is a summary of the transportation network stream crossings in the WSDA. Please note that miles of train tracks could be less due to decommissioning of tracks.

Table 8: Transportation Network Summary for WSDA

	Within 100 feet of stream	Total
Miles of Interstate	0.08	83
Miles of Primary	0.05	71
Miles of Secondary	1.4	379
Miles of Train Tracks	21	212

Table 9: Transportation Network Stream Crossings in the WSDA

	Train Tracks	Interstate	Primary Roads	Secondary Roads
Number of Stream Crossings	180	47	44	224

- **General Land Use**

The general land use analysis will provide an indication of which land uses predominate throughout the SWAP area, near the intake, or adjacent to the rivers, streams, lakes, and reservoirs. The land use in the SWAP area is shown in Table 10.

Table 10: General Land Use

LAND USE	WSDA Area (Acres)	WSDA % of Total	ZCC Area (Acres)	ZCC % of Total
Shrub Land	11,343	1.00	102	2.00
Woodland	888,568	91.00	2,754	46.00
Water	10,314	1.00	797	13.00
Roads	1,201	0.10	133	2.00
Power lines	2,312	0.20	16	0.30
Urban	11,633	1.00	1,745	29.00
Agriculture	46,476	5.00	406	7.00
Barren	5,250	0.50	15	0.30
Wetland	401	0.04	1	0.02

SWAPP Area Assessment and Protection Activities

Analysis of the Resource Characterization and potential significant contaminant sources of the SWAP area for the WVAVC-Kanawha Valley indicates that the water supply is susceptible to possible future contamination based on the following:

- ✓ The long narrow shape, steep topographic setting, and the large size of the WSDA present an increased potential for contamination. An important flood control/recreational impoundment is located on the Elk River at Sutton in Braxton County approximately 100 miles upstream of the intake. In addition, the large number of stream crossings (495 total) provides the opportunity for an accidental release/spill of material to easily get directly into the stream drainage network. Source water protection efforts should be directed toward the establishment of an effective and efficient emergency response plan if one does not currently exist.
- ✓ Current land use practices appear to be having an adverse impact on the ecological health of the Elk River Watershed. Coal, oil, gas, timbering, and sandstone quarries are among the industries present. Agriculture is dominated by livestock and related products. This is evidenced by of the 832.41 miles assessed in the DEP 303b report; only 26.5% were fully supporting the overall designated use. Higher bacteria levels are generally concentrated around populations centers, caused by regulated or unregulated discharges. In addition, the health of the Elk River may be impacted by a number of regulated and unregulated point and non-point sources in the ZCC and WSDA.

Recommendations:

- ✓ Protection efforts should focus on the collection of additional information on the point and non-point sources present to evaluate the risk;
- ✓ Work with the Department of Health and Human Resources, other state agencies and local officials to make sure your intake is included in local regulations and inspections efforts;
- ✓ Restrict access to the intake area and post the area with Drinking Water Protection Area signs;
- ✓ Address any biological contaminant issues; and
- ✓ Protection options need to be actively considered to further evaluate and manage all potential contaminant sources and the WVAWC-Kanawha Valley public water supply should place a high priority on protecting its supply source.

NEXT STEP – SWAP Protection Plan

The next step in source water protection planning is to prepare a SWAP protection plan. The SWAP protection plan incorporates this source water delineation assessment report and three additional sections: Contingency Planning, Alternative Sources, and Management Planning.

Contingency Planning

A contingency plan documents the system's planned response to interruption of the source water supply.

Alternative Sources

Information pertaining to alternative water sources focusing on long-term source replacement should the system be required to develop a new source of water due to contamination (or other reasons). This section outlines the most likely sources that can be used as an alternate water source.

Management Planning

Management planning is the most important element of SWAP. The management plan identifies specific activities that will be pursued by the system to protect their water resources. The system will benefit by taking a proactive approach to source water protection in their watersheds. It is anticipated that most of the management effort will focus on coordination with government agencies and periodic surveys of the watersheds. It may be necessary to conduct a limited number of special studies to determine actual risk and consequences for selected contaminant sources. This information may be needed before decisions can be made on management activities.

Need additional information?

Additional information or sources of information can be obtained by calling or visiting the BPH web site at www.wvdhhr.org/bph/swap or phoning 304-558-2981.

Glossary:

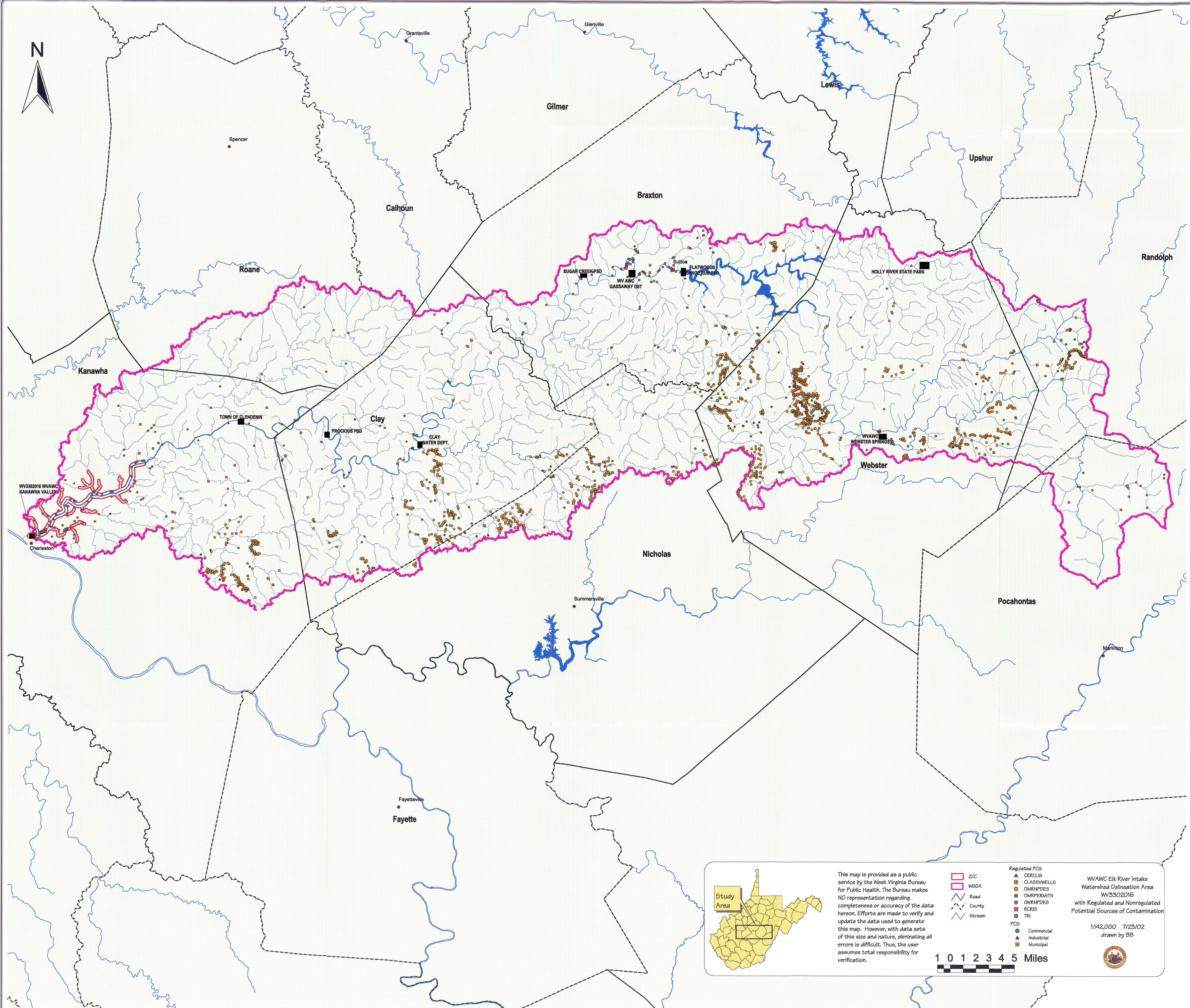
Best Management Practices (BMP's) are operational procedures used to prevent or reduce pollution.

Public Water System (PWS) is a system for the provision to the public of pipe water for human consumption, if such system has at least 15 service or regularly serves an average of at least 25 individuals daily at least 60 days of the year.

Water Quality Data is used to help assess both the potential pathogen contamination and other compliance monitoring (Nitrates) parameters associated with public water supply wells.

Potential Significant Contaminant Source (PSCS) is a facility or activity that stores, uses, or produces chemicals or elements, and has the potential to release contaminants identified in the state program within a source water protection area in an amount, which could contribute significantly to the contaminants of the source waters of the public water supply.

Disclaimer - The coverage's presented in this program are under constant revision as new sites or facilities are added. They may not contain all the potential or existing sites or facilities. The West Virginia Bureau for Public Health is not responsible for the use or interpretation of this information. Please report any inaccuracies on either the map or inventory by phoning 304-558-2981.



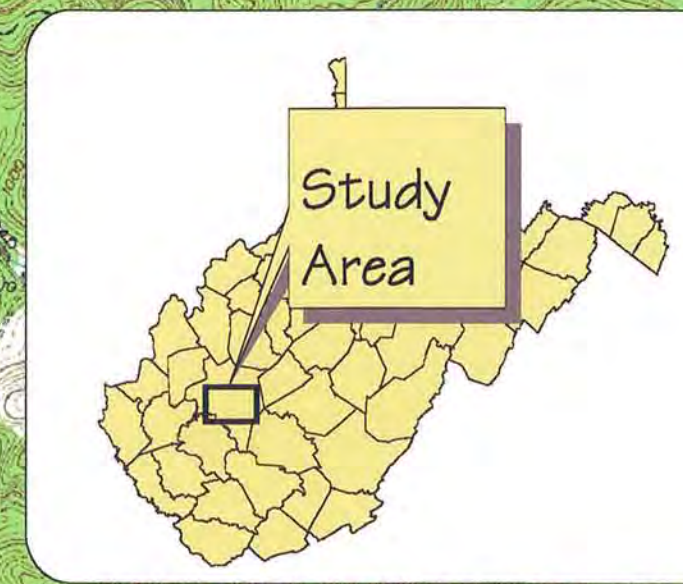
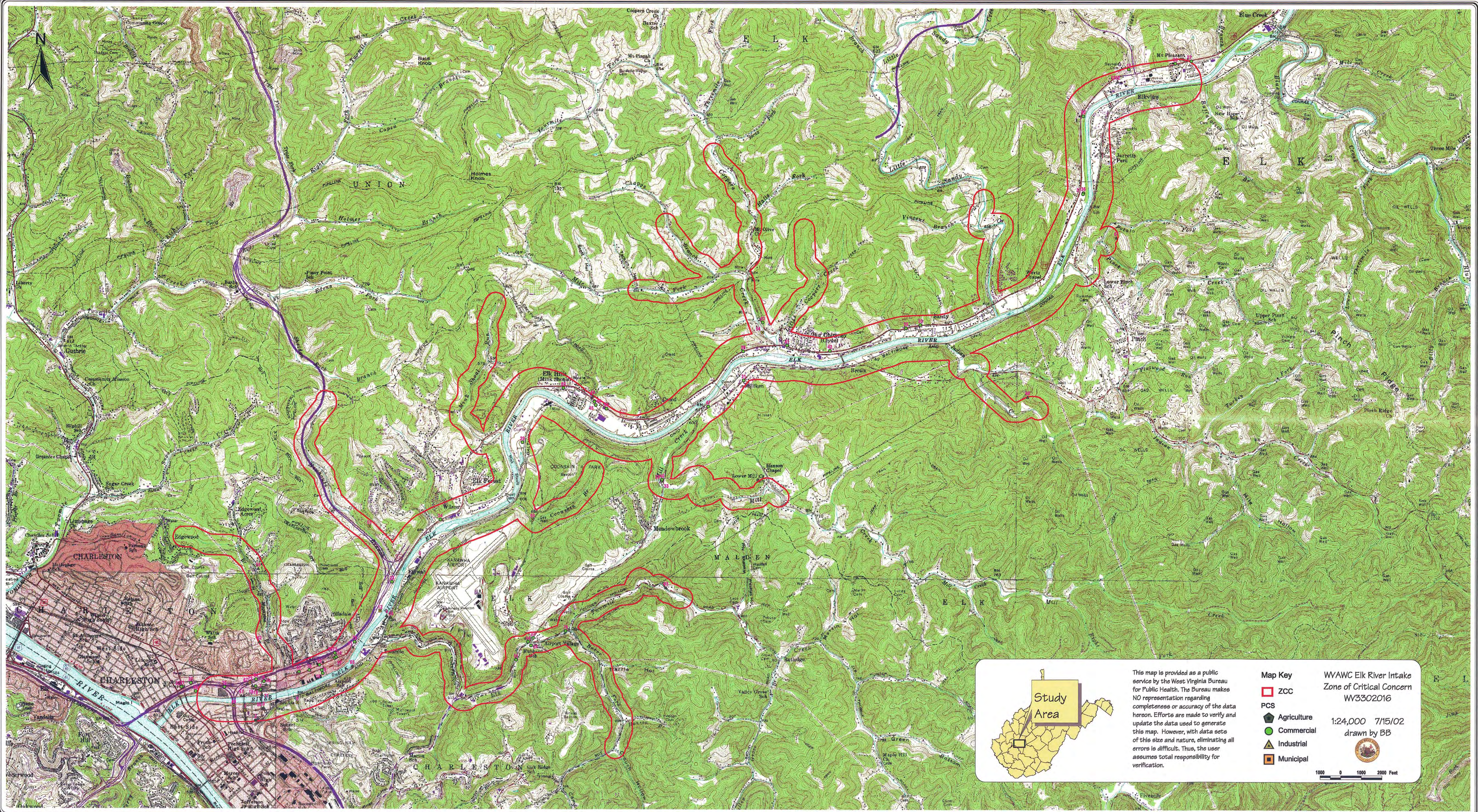
This map is provided as a public service by the West Virginia Bureau for Public Health. The Bureau makes NO representation regarding completeness or accuracy of the data hereon. Efforts are made to verify and update the data used to generate this map. However, with data sets of this size and nature, eliminating all errors is difficult. Thus, the user assumes total responsibility for verification.

- ZCC
 - WSDA
 - Road
 - County
 - Stream
- Regulated PCS
- CERCLIS
 - GLASSWELLS
 - OMRNPDES
 - OMRPERMITS
 - OMRNPDES
 - RCRIS
 - TRI
- PCS
- Commercial
 - Industrial
 - Municipal

WV AWC Elk River Intake
Watershed Delineation Area
WY3302016
with Regulated and Nonregulated
Potential Sources of Contamination

1:142,000 7/23/02
drawn by BB



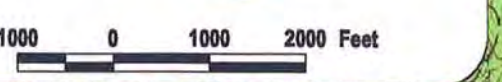


This map is provided as a public service by the West Virginia Bureau for Public Health. The Bureau makes NO representation regarding completeness or accuracy of the data hereon. Efforts are made to verify and update the data used to generate this map. However, with data sets of this size and nature, eliminating all errors is difficult. Thus, the user assumes total responsibility for verification.

- Map Key**
- ZCC
 - PCS
 - Agriculture
 - Commercial
 - ▲ Industrial
 - Municipal

WAWC Elk River Intake
Zone of Critical Concern
WV3302016

1:24,000 7/15/02
drawn by BB



ATTACHMENT A

Regulated and Non-Regulated PCSs

in the

Zone of Critical Concern

Regulated and Non-Regulated PCS's in the Zone of Critical Concern

NUMBER	PWSID	SITE_NAME	SITE DESCRIPTION	SOURCE_CAT	ASSOCIATED	THREAT	REG. PCS
1	WV3302016	RAILWAY(RRTY4)	COURT ST.	Municipal	M, VOC, SOC, PH	H	N
2	WV3302016	SOUTHERN STATES(FERS1)	BULLIT ST.	Agriculture	NN	L	N
3	WV3302016	PFAFF & SMITH GRAVEL STORAGE (GP)	101513 BARLOW DR.	Industrial	PH	L	N
4	WV3302016	PENNZOIL MANUFACTURING PLANT (PNZ)	BARLOW ST.	Industrial	PH, VOC	M	N
5	WV3302016	ALLEGHANY POWER CO. (ELM3)	SEWER LIFT STATION	Industrial	M, VOC, SOC	M	N
6	WV3302016	CHARLESTON LIFT STATION (SS)	GAS STATION AND JASPER MOTORS	Municipal	M, VOC, MP, TO	L	N
7	WV3302016	MARATHON WITH AUTO REPAIR (GS8)	WITH AUTO REPAIR SPRING ST. & BIGLEY AVE.	Commercial	PH, M, VOC, SOC	M	N
8	WV3302016	PENNZOIL GAS STATION (GS9)	1718 PENN. AVE	Commercial	PH, M, VOC, SOC	M	N
9	WV3302016	WELDING SHOP (WS)	1716 PENN. AVE	Commercial	M, VOC	L	N
10	WV3302016	SUNBELT RENTALS (ERR3)	CHEMICAL DISTRIBUTOR	Commercial	PH, M, VOC	L	N
11	WV3302016	PAINT SUPPLY HOUSE (CDT1)	RTE 119	Industrial	PH, M, VOC, SOC	H	N
12	WV3302016	SALT STORAGE (RMF2)	RTE 119	Municipal	PH, VOC, M	M	N
13	WV3302016	A&A AUTO SALES (CD4)	RTE 119	Commercial	PH, VOC	L	N
14	WV3302016	HISTORIC GAS STATION (AGS10)	1831 RTE 119	Commercial	PH, M, VOC, SOC	M	N
15	WV3302016	SOUTHERN PRE-OWNED AUTO SALES (CD8)	1724 RTE 119	Commercial	PH, M, VOC, SOC	L	N
16	WV3302016	SHELL GAS STATION (GS11)	BIGLEY AND WEST MOORELAND	Commercial	PH, VOC	M	N
17	WV3302016	CHEVRON (GS12)	MARX AND BIGLEY	Commercial	PH, M, VOC, SOC	M	N
18	WV3302016	ELECTRICAL MANUFACTURING (ELM4)	RTE 119	Commercial	PH, M, VOC, SOC	M	N
19	WV3302016	BODY SHOP (BS2)	RTE 119	Industrial	M, VOC, HM, SOC	M	N
20	WV3302016	GO-MART (GS13)	RTE 119	Commercial	VOC, PH	M	N
21	WV3302016	GARDENER'S DRY CLEANERS (DC3)	RTE 119 & RTE 60	Commercial	PH, M, VOC, SOC	M	N
22	WV3302016	PRINT SHOP (PRS)	PENN AVE 1 ELK SQUARE	Commercial	VOC, SOC	M	N
23	WV3302016	HAPPY MOTORING CO. (CD3)	PENN. AVE	Commercial	M, VOC, SOC	L	N
24	WV3302016	KELLING AUTO (CD10)	RTE 114	Commercial	PH, VOC	M	N
25	WV3302016	AUTO REPAIR SHOP (ARS6)	(304) 345-0609	Commercial	PH, VOC	M	N
26	WV3302016	BODY SHOP (BS3)	RTE 114	Commercial	PH, M, VOC, HM, SOC	M	N
27	WV3302016	SHELL STATION (GS15)	RTE 114	Commercial	VOC, PH	M	N
28	WV3302016	CAR WASH (CW4)	RUTLEDGE & RTE 114	Commercial	PH, M, VOC, SOC	M	N
29	WV3302016	HERSHER GOLF COURSE (GC)	RTE 114	Commercial	PH, VOC	M	N
30	WV3302016	K&D AUTO REPAIRS (ARS7)	COONSKIN RD.	Commercial	VOC, SOC, PH	M	N
31	WV3302016	JEFF'S QUICK LUBE (ARS5)	RTE 114	Commercial	PH, M, VOC, HM, SOC	M	N
32	WV3302016	EXXON (GS14)	RTE 119 & ELK ST.	Commercial	PH, M, VOC, HM, SOC	M	N
33	WV3302016	RTE 119 CAR WASH (CW3)	RTE 119 & ELK ST.	Commercial	PH, M, VOC, SOC	M	N
34	WV3302016	CAPITAL CITY MOTORS (CD6)	RTE 119	Commercial	PH, VOC	L	N
35	WV3302016	DANNY'S VOLKSWAGON (ARS8)	RTE 119	Commercial	PH, VOC	M	N
36	WV3302016	CHARLESTON BUS DEPOT (BT2)	5054 RTE 119	Commercial	PH, VOC	M	N
37	WV3302016	AST (ASTs)	RTE 119	Commercial	M, VOC, HM, SOC, PH	H	N
38	WV3302016	PIT STOP (ARS9)	ON BUS DEPOT LOT	Commercial	PH, VOC	H	N
39	WV3302016	CAR WASH (CW5)	RTE 119 & HAZEL	Commercial	PH, M, VOC, HM, SOC	M	N
40	WV3302016	CREDE TRACTOR (ERR4)	4916 RTE 119	Commercial	PH, VOC	M	N
41	WV3302016	EXXON (GS16)	ACROSS FROM EARTH TECH OFFICE	Commercial	PH, M, VOC	L	N
42	WV3302016	INDUSTRIAL EQUIPMENT (ERR5)	RTE 119 & RTE 4	Commercial	PH, M, VOC, SOC	M	N
43	WV3302016	JONES ESCAVATING (JSE)	RTE 119 & COOPERS CREEK RD.	Commercial	PH, M, VOC	L	N
44	WV3302016	CONSTRUCTION SITE (CS3)	RTE 114	Commercial	M, T, PH, VOC, SOC, HM	H	N
45	WV3302016	MILLENIUM MOTORS (CD9)	RTE 119	Commercial	PH, VOC	M	N
46	WV3302016	GENERAL MACHINE (MSH2)	RTE 119	Industrial	M, VOC, HM, PH, SOC	M	N
47	WV3302016	TRUCKS INC.(CD7)	2540 PENN. AVE.	Commercial	PH, VOC	M	N
48	WV3302016	WOMEN'S AND CHILDREN'S HOSPITAL (HSP)	PENN. AVE.	Commercial	R, VOC, MP, D	L	N

49	WV3302016	HIGHWAY (HY4L12)	HIGHWAY		Municipal	PH, VOC, M	M	N
50	WV3302016	CHEMICAL DISTRIBUTOR (CDT2)	CHEMICAL DISTRIBUTOR		Industrial	PH, M, VOC, SOC	H	N
51	WV3302016	CAR DEALERSHIP (CD5)	CAR DEALERSHIP		Commercial	PH, VOC	H	N
52	WV3302016	ELKVIEW DRUM DUMP			Industrial			Y
53	WV3302016	OIL WELL PRODUCTION	Sewage General		Industrial			Y
54	WV3302016	BIG CHIMNEY MHP	Sewage General		Municipal			Y
55	WV3302016	EVERGREEN ESTATES			Municipal			Y
56	WV3302016	COMPANY CORPORATION	Storm Water Industrial (GP)		Industrial			Y
57	WV3302016	MARTIN MARIETTA MATERIALS, INC.	Storm Water Industrial (GP)		Industrial			Y
58	WV3302016	DONS DISPOSAL SERVICE INC	Storm Water Industrial (GP)		Industrial			Y
59	WV3302016	ETOWAH TERMINAL	Individual Industrial		Industrial			Y
60	WV3302016	ARM & HAMMER ROAD SITE PROJECT	Storm Water Construction (GP)		Industrial			Y
61	WV3302016	RT 19 PROJECT	Storm Water Construction (GP)		Industrial			Y
62	WV3302016	ALLEN'S SCRAP SERVICE INC	Storm Water Construction (GP)		Industrial			Y
63	WV3302016	ASHLAND EXPLORATION-CHARLESTON	Storm Water Construction (GP)		Industrial			Y
64	WV3302016	A-1 BODY SHOP			Commercial			Y
65	WV3302016	PENNZOIL CO ETOWAH TERM			Industrial			Y
66	WV3302016	SUPERIOR WINDOWS			Commercial			Y
67	WV3302016	DRAVO CORP CHARLESTON PLANT			Industrial			Y
68	WV3302016	WV ARMORY BOARD OMS#1			Municipal			Y
69	WV3302016	TEDDYS BODY SHOP			Commercial			Y
70	WV3302016	CAMC WOMEN & CHILDREN DIV			Commercial			Y
71	WV3302016	DONS DISPOSAL SERVICE INC			Industrial			Y
72	WV3302016	CITY OF CHARLESTON PUBLIC WORKS			Municipal			Y
73	WV3302016	BOICES AUTO CLINIC			Commercial			Y
74	WV3302016	MINING PROGRESS INCORPORATED			Industrial			Y
75	WV3302016	RUSSO FRANK AUTO SVC CTR			Commercial			Y
76	WV3302016	RAINES LEWIS MOTORS INC			Commercial			Y
77	WV3302016	BOICES AUTO CLINIC			Commercial			Y
78	WV3302016	ED KEELING AUTO REPAIR SHOP INC			Commercial			Y

ATTACHMENT B

Regulated PCSs

in the

Delineation Area

Regulated PCS's in the Watershed Delineation Area

ID	SITE_NAME	TYPE
1	KAY LANE DRUM DUMP	CERCLIS
2	PENNZOIL CO - ELK REFINERY	CERCLIS
3	APPALACHIAN TIMBER SERVICES INC	CERCLIS
4	ALBERT HIZER LANDFILL	CERCLIS
5	BRAXTON CTY LANDFILL	CERCLIS
6	CLAY CTY DUMP	CERCLIS
7	CAPITAL CITY JUNK	CERCLIS
8	CHARLIE SLACK POND	CERCLIS
9	BLACK ROCK ASPHALT PROPERTY	CERCLIS
10	ELKVIEW DRUM DUMP	CERCLIS
11	OIL WELL PRODUCTION	CERCLIS
12	BROWNING-FERRIS IND. - CHEMICAL SERV INC	CERCLIS
13	PAR INDUSTRIES	CERCLIS
14	BICKMORE DRUM DUMP	CERCLIS
15	COLUMBIA GAS TRANSMISSION - COBB STATION	CERCLIS
16	GOULDS ELECTRIC MOTOR REPAIR MACH SHOP	CERCLIS
17	CLENDENIN DRUM	CERCLIS
18	HALLIBURTON(National Petroleum Testing)	CLASSVWELLS
19	BRIER RUN FARM	CLASSVWELLS
20	VENEER TRANSPORTATION	CLASSVWELLS
21	FLATWOODS GO-MART	CLASSVWELLS
22	PRINCESS SUSAN COAL CO	OMRPERMITS
23	P & S COAL CO, INC	OMRPERMITS
24	PRINCESS SUSAN COAL CO	OMRPERMITS
25	APPALACHIAN MINING INC	OMRPERMITS
26	APPALACHIAN MINING INC	OMRPERMITS
27	VANDALIA RESOURCES, INC.	OMRPERMITS
28	CHICOPEE COAL COMPANY, INC.	OMRPERMITS
29	CHICOPEE COAL COMPANY, INC.	OMRPERMITS
30	CHICOPEE COAL COMPANY, INC.	OMRPERMITS
31	APPALACHIAN MINING INC	OMRPERMITS
32	CHICOPEE COAL COMPANY, INC.	OMRPERMITS
33	APPALACHIAN MINING INC	OMRPERMITS
34	APPALACHIAN MINING INC	OMRPERMITS
35	APPALACHIAN MINING INC	OMRPERMITS
36	APPALACHIAN MINING INC	OMRPERMITS
37	APPALACHIAN MINING INC	OMRPERMITS
38	MINING TECHNOLOGIES INC	OMRPERMITS
39	FOLA COAL COMPANY, L.L.C.	OMRPERMITS
40	VANDALIA RESOURCES, INC.	OMRPERMITS
41	VANDALIA RESOURCES, INC.	OMRPERMITS
42	DIVITA COAL CO	OMRPERMITS
43	MOLLOY MINING INC	OMRPERMITS
44	PEERLESS EAGLE COAL CO	OMRPERMITS
45	FOLA COAL COMPANY, L.L.C.	OMRPERMITS
46	APPALACHIAN MINING INC	OMRPERMITS
47	FOLA COAL COMPANY, L.L.C.	OMRPERMITS
48	POLARIS COAL JOINT VENTURE	OMRPERMITS
49	FOLA COAL COMPANY, L.L.C.	OMRPERMITS
50	APPALACHIAN MINING INC	OMRPERMITS
51	PEERLESS EAGLE COAL CO	OMRPERMITS
52	INTREPID MINING COMPANY	OMRPERMITS

53 STEAR AUGER MINING INC	OMRPERMITS
54 STEAR AUGER MINING INC	OMRPERMITS
55 VANDALIA RESOURCES, INC.	OMRPERMITS
56 KMADER ENTERPRISES CORP	OMRPERMITS
57 MOLLOY MINING INC	OMRPERMITS
58 COPPERAS COAL CORP	OMRPERMITS
59 STEAR AUGER MINING INC	OMRPERMITS
60 EASTERN ENERGY INVESTMENTS	OMRPERMITS
61 MOLLOY MINING INC	OMRPERMITS
62 CHLOE RIDGE COAL CO	OMRPERMITS
63 VANDALIA RESOURCES, INC.	OMRPERMITS
64 VANDALIA RESOURCES, INC.	OMRPERMITS
65 PEERLESS EAGLE COAL CO	OMRPERMITS
66 MOLLOY MINING INC	OMRPERMITS
67 U. S. CONSTRUCTION CO., INC	OMRPERMITS
68 RADEC, INC	OMRPERMITS
69 VANDALIA RESOURCES, INC.	OMRPERMITS
70 LAND USE CORPORATION	OMRPERMITS
71 MAJESTIC MINING INC	OMRPERMITS
72 WACO OIL & GAS CO., INC.	OMRPERMITS
73 PROSPERITY ENERGY, INC	OMRPERMITS
74 TAMMIE LYNN COAL CO., INC	OMRPERMITS
75 MAJESTIC MINING INC	OMRPERMITS
76 LODESTAR ENERGY, INC.	OMRPERMITS
77 LAND USE CORPORATION	OMRPERMITS
78 BRADY-CLINE COAL CO	OMRPERMITS
79 MAJESTIC MINING INC	OMRPERMITS
80 LODESTAR ENERGY, INC.	OMRPERMITS
81 PISGAH RIDGE COAL CORP	OMRPERMITS
82 LAND USE CORPORATION	OMRPERMITS
83 MAJESTIC MINING INC	OMRPERMITS
84 GAULEY EAGLE HOLDINGS INC	OMRPERMITS
85 MAJESTIC MINING INC	OMRPERMITS
86 JACK RUN COAL CORP, INC	OMRPERMITS
87 EVERGREEN MINING COMPANY	OMRPERMITS
88 MAJESTIC MINING INC	OMRPERMITS
89 MAJESTIC MINING INC	OMRPERMITS
90 PHOENIX RESOURCES, INC.	OMRPERMITS
91 LODESTAR ENERGY, INC.	OMRPERMITS
92 EVERGREEN MINING COMPANY	OMRPERMITS
93 EVERGREEN MINING COMPANY	OMRPERMITS
94 MAJESTIC MINING INC	OMRPERMITS
95 MAJESTIC MINING INC	OMRPERMITS
96 GAULEY EAGLE HOLDINGS INC	OMRPERMITS
97 MAJESTIC MINING INC	OMRPERMITS
98 GAULEY EAGLE HOLDINGS INC	OMRPERMITS
99 BATTLE RIDGE COMPANIES	OMRPERMITS
100 EVERGREEN MINING COMPANY	OMRPERMITS
101 GAULEY EAGLE HOLDINGS INC	OMRPERMITS
102 JULIANA MINING COMPANY, INC.	OMRPERMITS
103 TERRY EAGLE COAL COMPANY LLC	OMRPERMITS
104 SUMMERSVILLE FIVE BLOCK COAL	OMRPERMITS
105 TERRY EAGLE COAL COMPANY LLC	OMRPERMITS
106 CARBON RIDGE MINING CO	OMRPERMITS

107 SUMMERSVILLE FIVE BLOCK COAL	OMRPERMITS
108 TERRY EAGLE COAL COMPANY LLC	OMRPERMITS
109 MAJESTIC MINING INC	OMRPERMITS
110 WEST LEATHERWOOD MINING, INC	OMRPERMITS
111 SPRING RIDGE COAL CO	OMRPERMITS
112 R. H. HELMICK, INC	OMRPERMITS
113 HICA CORPORATION	OMRPERMITS
114 COASTAL COAL-WEST VIRGINIA, LLC	OMRPERMITS
115 ELK RIVER SEWELL COAL CO	OMRPERMITS
116 FAITH COAL CO	OMRPERMITS
117 SPRING RIDGE COAL CO	OMRPERMITS
118 GAULEY EAGLE HOLDINGS INC	OMRPERMITS
119 E.F.A., INC	OMRPERMITS
120 EVERGREEN MINING COMPANY	OMRPERMITS
121 ELK RIVER SEWELL COAL CO	OMRPERMITS
122 M & H COAL CO/POVAL CORP	OMRPERMITS
123 TESTA COAL CO, INC	OMRPERMITS
124 BRIARWOOD ENERGY, INC	OMRPERMITS
125 ELK RIVER SEWELL COAL CO	OMRPERMITS
126 PAUL'S CONSTRUCTION, INC	OMRPERMITS
127 SPRING RIDGE COAL CO	OMRPERMITS
128 COASTAL COAL-WEST VIRGINIA, LLC	OMRPERMITS
129 JULIANA MINING COMPANY, INC.	OMRPERMITS
130 ELK RIVER SEWELL COAL CO	OMRPERMITS
131 COASTAL COAL-WEST VIRGINIA, LLC	OMRPERMITS
132 PAUL'S CONSTRUCTION, INC	OMRPERMITS
133 COASTAL COAL-WEST VIRGINIA, LLC	OMRPERMITS
134 THOMAS MOUNTAIN COAL CO INC	OMRPERMITS
135 ELK RIVER SEWELL COAL CO	OMRPERMITS
136 COASTAL COAL-WEST VIRGINIA, LLC	OMRPERMITS
137 COASTAL COAL-WEST VIRGINIA, LLC	OMRPERMITS
138 COASTAL COAL-WEST VIRGINIA, LLC	OMRPERMITS
139 ANR COAL-WEST VIRGINIA, LLC	OMRPERMITS
140 ANR COAL-WEST VIRGINIA, LLC	OMRPERMITS
141 PAMMLID COAL CO	OMRPERMITS
142 JULIANA MINING COMPANY, INC.	OMRPERMITS
143 COASTAL COAL-WEST VIRGINIA, LLC	OMRPERMITS
144 POCA RIVER MINING CO., INC	OMRPERMITS
145 JULIANA MINING COMPANY, INC.	OMRPERMITS
146 D.M.D. MINING, INC.	OMRPERMITS
147 JINKS MINING INC	OMRPERMITS
148 COASTAL COAL-WEST VIRGINIA, LLC	OMRPERMITS
149 ELK RIVER SEWELL COAL CO	OMRPERMITS
150 COASTAL COAL-WEST VIRGINIA, LLC	OMRPERMITS
151 COASTAL COAL-WEST VIRGINIA, LLC	OMRPERMITS
152 MOUNTAIN CARBON INC	OMRPERMITS
153 ELK RIVER SEWELL COAL CO	OMRPERMITS
154 JULIANA MINING COMPANY, INC.	OMRPERMITS
155 JULIANA MINING COMPANY, INC.	OMRPERMITS
156 BJM COAL COMPANY	OMRPERMITS
157 JULIANA MINING COMPANY, INC.	OMRPERMITS
158 EVERGREEN MINING COMPANY	OMRPERMITS
159 EVERGREEN MINING COMPANY	OMRPERMITS
160 GRAFTON COAL COMPANY	OMRPERMITS

161 JULIANA MINING COMPANY, INC.	OMRPERMITS
162 JULIANA MINING COMPANY, INC.	OMRPERMITS
163 JULIANA MINING COMPANY, INC.	OMRPERMITS
164 JULIANA MINING COMPANY, INC.	OMRPERMITS
165 ELK RIVER SEWELL COAL CO	OMRPERMITS
166 COASTAL COAL-WEST VIRGINIA, LLC	OMRPERMITS
167 JULIANA MINING COMPANY, INC.	OMRPERMITS
168 GRAFTON COAL COMPANY	OMRPERMITS
169 JULIANA MINING COMPANY, INC.	OMRPERMITS
170 BUNDY AUGER MINING, INC.	OMRPERMITS
171 BUNDY AUGER MINING, INC.	OMRPERMITS
172 D & K COAL COMPANY	OMRPERMITS
173 GRAFTON COAL COMPANY	OMRPERMITS
174 JULIANA MINING COMPANY, INC.	OMRPERMITS
175 BROOKS RUN COAL CO	OMRPERMITS
176 COASTAL COAL-WEST VIRGINIA, LLC	OMRPERMITS
177 BJM COAL COMPANY	OMRPERMITS
178 FISHER RUN COAL COMPANY, INC.	OMRPERMITS
179 ANR COAL-WEST VIRGINIA, LLC	OMRPERMITS
180 ELK RIVER SEWELL COAL CO	OMRPERMITS
181 COASTAL COAL-WEST VIRGINIA, LLC	OMRPERMITS
182 COASTAL COAL-WEST VIRGINIA, LLC	OMRPERMITS
183 ANR COAL-WEST VIRGINIA, LLC	OMRPERMITS
184 JULIANA MINING COMPANY, INC.	OMRPERMITS
185 C & C MINING, INC	OMRPERMITS
186 GRAFTON COAL COMPANY	OMRPERMITS
187 ALEX ENERGY, INC.	OMRPERMITS
188 COASTAL COAL-WEST VIRGINIA, LLC	OMRPERMITS
189 LACKEY COALS, INC	OMRPERMITS
190 PAMMLID COAL CO	OMRPERMITS
191 D & K COAL COMPANY	OMRPERMITS
192 GRAFTON COAL COMPANY	OMRPERMITS
193 TYGART COAL CO	OMRPERMITS
194 TYGART COAL CO	OMRPERMITS
195 PREMIUM SEWELL, INC	OMRPERMITS
196 PREMIUM SMOKELESS COAL CO	OMRPERMITS
197 PHOENIX RESOURCES, INC.	OMRPERMITS
198 GRAFTON COAL COMPANY	OMRPERMITS
199 COASTAL COAL-WEST VIRGINIA, LLC	OMRPERMITS
200 COASTAL COAL-WEST VIRGINIA, LLC	OMRPERMITS
201 LEXIE COAL CORPORATION	OMRPERMITS
202 JULIANA MINING COMPANY, INC.	OMRPERMITS
203 JULIANA MINING COMPANY, INC.	OMRPERMITS
204 ELK RIVER SEWELL COAL CO	OMRPERMITS
205 DOVE ENTERPRISES OF WV INC	OMRPERMITS
206 PHOENIX RESOURCES, INC.	OMRPERMITS
207 D & R TRUCKING, INC.	OMRPERMITS
208 PREMIUM SEWELL, INC	OMRPERMITS
209 COASTAL COAL-WEST VIRGINIA, LLC	OMRPERMITS
210 VENCILL CORP	OMRPERMITS
211 COAL TECHNOLOGY, INC	OMRPERMITS
212 COASTAL COAL-WEST VIRGINIA, LLC	OMRPERMITS
213 POCAHONTAS SECOND CORP	OMRPERMITS
214 PREMIUM SEWELL, INC	OMRPERMITS

215 POCAHONTAS SECOND CORP	OMRPERMITS
216 PREMIUM SEWELL, INC	OMRPERMITS
217 PREMIUM SEWELL, INC	OMRPERMITS
218 BROOKS RUN COAL CO	OMRPERMITS
219 MARSON COAL COMPANY	OMRPERMITS
220 COASTAL COAL-WEST VIRGINIA, LLC	OMRPERMITS
221 JULIANA MINING COMPANY, INC.	OMRPERMITS
222 JULIANA MINING COMPANY, INC.	OMRPERMITS
223 JULIANA MINING COMPANY, INC.	OMRPERMITS
224 ELKHEAD SEWELL INC	OMRPERMITS
225 FENTON MINING CORP	OMRPERMITS
226 PHOENIX RESOURCES, INC.	OMRPERMITS
227 COASTAL COAL-WEST VIRGINIA, LLC	OMRPERMITS
228 COASTAL COAL-WEST VIRGINIA, LLC	OMRPERMITS
229 COASTAL COAL-WEST VIRGINIA, LLC	OMRPERMITS
230 PREMIUM SEWELL, INC	OMRPERMITS
231 PHOENIX RESOURCES, INC.	OMRPERMITS
232 PREMIUM SEWELL, INC	OMRPERMITS
233 MICINDE COAL COMPANY	OMRPERMITS
234 SEWELL MINING ASSOCIATES LP	OMRPERMITS
235 PREMIUM SEWELL, INC	OMRPERMITS
236 PHOENIX RESOURCES, INC.	OMRPERMITS
237 PREMIUM SEWELL, INC	OMRPERMITS
238 MARSON COAL COMPANY	OMRPERMITS
239 JULIANA MINING COMPANY, INC.	OMRPERMITS
240 MARSON COAL COMPANY	OMRPERMITS
241 PREMIUM SEWELL, INC	OMRPERMITS
242 S.S. "JOE" BURFORD, INC	OMRPERMITS
243 JULIANA MINING COMPANY, INC.	OMRPERMITS
244 JAGRTI COAL CO., INC	OMRPERMITS
245 COASTAL COAL-WEST VIRGINIA, LLC	OMRPERMITS
246 JACKSON STONE, INC	OMRPERMITS
247 EVERGREEN MINING COMPANY	OMRPERMITS
248 JAGRTI COAL CO., INC	OMRPERMITS
249 PREMIUM SEWELL, INC	OMRPERMITS
250 PHOENIX RESOURCES, INC.	OMRPERMITS
251 PHOENIX RESOURCES, INC.	OMRPERMITS
252 PREMIUM SEWELL, INC	OMRPERMITS
253 COASTAL COAL-WEST VIRGINIA, LLC	OMRPERMITS
254 PHOENIX RESOURCES, INC.	OMRPERMITS
255 PREMIUM SEWELL, INC	OMRPERMITS
256 TOY COAL CO	OMRPERMITS
257 PREMIUM SEWELL, INC	OMRPERMITS
258 COASTAL COAL-WEST VIRGINIA, LLC	OMRPERMITS
259 ANR COAL COMPANY, LLC	OMRPERMITS
260 JULIANA MINING COMPANY, INC.	OMRPERMITS
261 COASTAL COAL-WEST VIRGINIA, LLC	OMRPERMITS
262 WOLFPEN KNOB DEVELOPMENT COMPANY	OMRPERMITS
263 COASTAL COAL-WEST VIRGINIA, LLC	OMRPERMITS
264 BROOKS RUN COAL CO	OMRPERMITS
265 CONSOL INC.	OMRPERMITS
266 CONSOL INC.	OMRPERMITS
267 TANGLEWOOD ENERGY, INC	OMRPERMITS
268 TANGLEWOOD ENERGY, INC	OMRPERMITS

269 JULIANA MINING COMPANY, INC.	OMRPERMITS
270 COASTAL COAL-WEST VIRGINIA, LLC	OMRPERMITS
271 COASTAL COAL-WEST VIRGINIA, LLC	OMRPERMITS
272 COASTAL COAL-WEST VIRGINIA, LLC	OMRPERMITS
273 COASTAL COAL-WEST VIRGINIA, LLC	OMRPERMITS
274 COASTAL COAL-WEST VIRGINIA, LLC	OMRPERMITS
275 COASTAL COAL-WEST VIRGINIA, LLC	OMRPERMITS
276 WOLFPEN KNOB DEVELOPMENT COMPANY	OMRPERMITS
277 JULIANA MINING COMPANY, INC.	OMRPERMITS
278 JULIANA MINING COMPANY, INC.	OMRPERMITS
279 MARSON COAL COMPANY	OMRPERMITS
280 ONEIDA COAL CO INC	OMRPERMITS
281 MARSON COAL COMPANY	OMRPERMITS
282 P & S COAL COMPANY, INC.	OMRNPDES
283 P & S COAL COMPANY, INC.	OMRNPDES
284 P & S COAL COMPANY, INC.	OMRNPDES
285 P & S COAL COMPANY, INC.	OMRNPDES
286 P & S COAL COMPANY, INC.	OMRNPDES
287 P & S COAL COMPANY, INC.	OMRNPDES
288 P & S COAL COMPANY, INC.	OMRNPDES
289 P & S COAL COMPANY, INC.	OMRNPDES
290 P & S COAL COMPANY, INC.	OMRNPDES
291 P & S COAL COMPANY, INC.	OMRNPDES
292 P & S COAL COMPANY, INC.	OMRNPDES
293 P & S COAL COMPANY, INC.	OMRNPDES
294 P & S COAL COMPANY, INC.	OMRNPDES
295 P & S COAL COMPANY, INC.	OMRNPDES
296 P & S COAL COMPANY, INC.	OMRNPDES
297 P & S COAL COMPANY, INC.	OMRNPDES
298 P & S COAL COMPANY, INC.	OMRNPDES
299 P & S COAL COMPANY, INC.	OMRNPDES
300 P & S COAL COMPANY, INC.	OMRNPDES
301 P & S COAL COMPANY, INC.	OMRNPDES
302 P & S COAL COMPANY, INC.	OMRNPDES
303 P & S COAL COMPANY, INC.	OMRNPDES
304 P & S COAL COMPANY, INC.	OMRNPDES
305 P & S COAL COMPANY, INC.	OMRNPDES
306 P & S COAL COMPANY, INC.	OMRNPDES
307 LOGAN COAL & EXPORT CORP.	OMRNPDES
308 DONALDSON MINE COMPANY	OMRNPDES
309 P & S COAL COMPANY, INC.	OMRNPDES
310 P & S COAL COMPANY, INC.	OMRNPDES
311 P & S COAL COMPANY, INC.	OMRNPDES
312 P & S COAL COMPANY, INC.	OMRNPDES
313 P & S COAL COMPANY, INC.	OMRNPDES
314 P & S COAL COMPANY, INC.	OMRNPDES
315 P & S COAL COMPANY, INC.	OMRNPDES
316 P & S COAL COMPANY, INC.	OMRNPDES
317 PRINCESS SUSAN COAL COMPANY	OMRNPDES
318 PRINCESS SUSAN COAL COMPANY	OMRNPDES
319 P & S COAL COMPANY, INC.	OMRNPDES
320 P & S COAL COMPANY, INC.	OMRNPDES
321 PRINCESS SUSAN COAL COMPANY	OMRNPDES
322 P & S COAL COMPANY, INC.	OMRNPDES

323 APPALACHIAN MINING, INC.	OMRNPDES
324 APPALACHIAN MINING, INC.	OMRNPDES
325 PRINCESS SUSAN COAL COMPANY	OMRNPDES
326 PRINCESS SUSAN COAL COMPANY	OMRNPDES
327 PRINCESS SUSAN COAL COMPANY	OMRNPDES
328 P & S COAL COMPANY, INC.	OMRNPDES
329 P & S COAL COMPANY, INC.	OMRNPDES
330 P & S COAL COMPANY, INC.	OMRNPDES
331 P & S COAL COMPANY, INC.	OMRNPDES
332 APPALACHIAN MINING, INC.	OMRNPDES
333 PRINCESS SUSAN COAL COMPANY	OMRNPDES
334 PRINCESS SUSAN COAL COMPANY	OMRNPDES
335 P & S COAL COMPANY, INC.	OMRNPDES
336 P & S COAL COMPANY, INC.	OMRNPDES
337 P & S COAL COMPANY, INC.	OMRNPDES
338 PRINCESS SUSAN COAL COMPANY	OMRNPDES
339 PRINCESS SUSAN COAL COMPANY	OMRNPDES
340 PRINCESS SUSAN COAL COMPANY	OMRNPDES
341 PRINCESS SUSAN COAL COMPANY	OMRNPDES
342 PRINCESS SUSAN COAL COMPANY	OMRNPDES
343 PRINCESS SUSAN COAL COMPANY	OMRNPDES
344 PRINCESS SUSAN COAL COMPANY	OMRNPDES
345 VANDALIA RESOURCES, INC.	OMRNPDES
346 PRINCESS SUSAN COAL COMPANY	OMRNPDES
347 PRINCESS SUSAN COAL COMPANY	OMRNPDES
348 PRINCESS SUSAN COAL COMPANY	OMRNPDES
349 PRINCESS SUSAN COAL COMPANY	OMRNPDES
350 PRINCESS SUSAN COAL COMPANY	OMRNPDES
351 PRINCESS SUSAN COAL COMPANY	OMRNPDES
352 VANDALIA RESOURCES, INC.	OMRNPDES
353 PRINCESS SUSAN COAL COMPANY	OMRNPDES
354 PRINCESS SUSAN COAL COMPANY	OMRNPDES
355 APPALACHIAN MINING, INC.	OMRNPDES
356 PRINCESS SUSAN COAL COMPANY	OMRNPDES
357 PRINCESS SUSAN COAL COMPANY	OMRNPDES
358 PRINCESS SUSAN COAL COMPANY	OMRNPDES
359 PRINCESS SUSAN COAL COMPANY	OMRNPDES
360 PRINCESS SUSAN COAL COMPANY	OMRNPDES
361 PRINCESS SUSAN COAL COMPANY	OMRNPDES
362 APPALACHIAN MINING, INC.	OMRNPDES
363 VANDALIA RESOURCES, INC.	OMRNPDES
364 VANDALIA RESOURCES, INC.	OMRNPDES
365 PRINCESS SUSAN COAL COMPANY	OMRNPDES
366 VANDALIA MINING CORPORATION	OMRNPDES
367 PRINCESS SUSAN COAL COMPANY	OMRNPDES
368 PRINCESS SUSAN COAL COMPANY	OMRNPDES
369 PRINCESS SUSAN COAL COMPANY	OMRNPDES
370 VANDALIA MINING CORPORATION	OMRNPDES
371 VANDALIA MINING CORPORATION	OMRNPDES
372 PRINCESS SUSAN COAL COMPANY	OMRNPDES
373 PRINCESS SUSAN COAL COMPANY	OMRNPDES
374 PRINCESS SUSAN COAL COMPANY	OMRNPDES
375 PRINCESS SUSAN COAL COMPANY	OMRNPDES
376 PRINCESS SUSAN COAL COMPANY	OMRNPDES

377 PRINCESS SUSAN COAL COMPANY	OMRNPDES
378 PRINCESS SUSAN COAL COMPANY	OMRNPDES
379 PRINCESS SUSAN COAL COMPANY	OMRNPDES
380 PRINCESS SUSAN COAL COMPANY	OMRNPDES
381 PRINCESS SUSAN COAL COMPANY	OMRNPDES
382 CANNELTON INDUSTRIES, INC.	OMRNPDES
383 VANDALIA MINING CORPORATION	OMRNPDES
384 VANDALIA RESOURCES, INC.	OMRNPDES
385 VANDALIA RESOURCES, INC.	OMRNPDES
386 VANDALIA RESOURCES, INC.	OMRNPDES
387 VANDALIA RESOURCES, INC.	OMRNPDES
388 VANDALIA RESOURCES, INC.	OMRNPDES
389 APPALACHIAN MINING, INC.	OMRNPDES
390 VANDALIA RESOURCES, INC.	OMRNPDES
391 VANDALIA RESOURCES, INC.	OMRNPDES
392 APPALACHIAN MINING, INC.	OMRNPDES
393 VANDALIA RESOURCES, INC.	OMRNPDES
394 VANDALIA RESOURCES, INC.	OMRNPDES
395 APPALACHIAN MINING, INC.	OMRNPDES
396 APPALACHIAN MINING, INC.	OMRNPDES
397 APPALACHIAN MINING, INC.	OMRNPDES
398 APPALACHIAN MINING, INC.	OMRNPDES
399 APPALACHIAN MINING, INC.	OMRNPDES
400 APPALACHIAN MINING, INC.	OMRNPDES
401 APPALACHIAN MINING, INC.	OMRNPDES
402 APPALACHIAN MINING, INC.	OMRNPDES
403 APPALACHIAN MINING, INC.	OMRNPDES
404 APPALACHIAN MINING, INC.	OMRNPDES
405 APPALACHIAN MINING, INC.	OMRNPDES
406 APPALACHIAN MINING, INC.	OMRNPDES
407 APPALACHIAN MINING, INC.	OMRNPDES
408 APPALACHIAN MINING, INC.	OMRNPDES
409 APPALACHIAN MINING, INC.	OMRNPDES
410 APPALACHIAN MINING, INC.	OMRNPDES
411 APPALACHIAN MINING, INC.	OMRNPDES
412 CANNELTON INDUSTRIES, INC.	OMRNPDES
413 APPALACHIAN MINING, INC.	OMRNPDES
414 APPALACHIAN MINING, INC.	OMRNPDES
415 APPALACHIAN MINING, INC.	OMRNPDES
416 APPALACHIAN MINING, INC.	OMRNPDES
417 APPALACHIAN MINING, INC.	OMRNPDES
418 APPALACHIAN MINING, INC.	OMRNPDES
419 APPALACHIAN MINING, INC.	OMRNPDES
420 APPALACHIAN MINING, INC.	OMRNPDES
421 APPALACHIAN MINING, INC.	OMRNPDES
422 APPALACHIAN MINING, INC.	OMRNPDES
423 APPALACHIAN MINING, INC.	OMRNPDES
424 APPALACHIAN MINING, INC.	OMRNPDES
425 APPALACHIAN MINING, INC.	OMRNPDES
426 APPALACHIAN MINING, INC.	OMRNPDES
427 APPALACHIAN MINING, INC.	OMRNPDES
428 FOLA COAL COMPANY, INC.	OMRNPDES
429 APPALACHIAN MINING, INC.	OMRNPDES
430 FOLA COAL COMPANY, INC.	OMRNPDES

431 APPALACHIAN MINING, INC.	OMRNPDES
432 APPALACHIAN MINING, INC.	OMRNPDES
433 FOLA COAL COMPANY, INC.	OMRNPDES
434 APPALACHIAN MINING, INC.	OMRNPDES
435 FOLA COAL COMPANY, INC.	OMRNPDES
436 FOLA COAL COMPANY, INC.	OMRNPDES
437 APPALACHIAN MINING, INC.	OMRNPDES
438 APPALACHIAN MINING, INC.	OMRNPDES
439 APPALACHIAN MINING, INC.	OMRNPDES
440 APPALACHIAN MINING, INC.	OMRNPDES
441 APPALACHIAN MINING, INC.	OMRNPDES
442 FOLA COAL COMPANY, INC.	OMRNPDES
443 FOLA COAL COMPANY, INC.	OMRNPDES
444 VANDALIA RESOURCES, INC.	OMRNPDES
445 APPALACHIAN MINING, INC.	OMRNPDES
446 APPALACHIAN MINING, INC.	OMRNPDES
447 FOLA COAL COMPANY, INC.	OMRNPDES
448 FOLA COAL COMPANY, INC.	OMRNPDES
449 FOLA COAL COMPANY, INC.	OMRNPDES
450 FOLA COAL COMPANY, INC.	OMRNPDES
451 FOLA COAL COMPANY, INC.	OMRNPDES
452 FOLA COAL COMPANY, INC.	OMRNPDES
453 FOLA COAL COMPANY, INC.	OMRNPDES
454 FOLA COAL COMPANY, INC.	OMRNPDES
455 FOLA COAL COMPANY, INC.	OMRNPDES
456 FOLA COAL COMPANY, INC.	OMRNPDES
457 FOLA COAL COMPANY, INC.	OMRNPDES
458 APPALACHIAN MINING, INC.	OMRNPDES
459 FOLA COAL COMPANY, INC.	OMRNPDES
460 VANDALIA RESOURCES, INC.	OMRNPDES
461 FOLA COAL COMPANY, INC.	OMRNPDES
462 VANDALIA RESOURCES, INC.	OMRNPDES
463 VANDALIA RESOURCES, INC.	OMRNPDES
464 VANDALIA RESOURCES, INC.	OMRNPDES
465 FOLA COAL COMPANY, INC.	OMRNPDES
466 VANDALIA RESOURCES, INC.	OMRNPDES
467 VANDALIA MINING CORPORATION	OMRNPDES
468 VANDALIA RESOURCES, INC.	OMRNPDES
469 FOLA COAL COMPANY, INC.	OMRNPDES
470 FOLA COAL COMPANY, INC.	OMRNPDES
471 VANDALIA MINING CORPORATION	OMRNPDES
472 VANDALIA MINING CORPORATION	OMRNPDES
473 VANDALIA RESOURCES, INC.	OMRNPDES
474 VANDALIA RESOURCES, INC.	OMRNPDES
475 VANDALIA RESOURCES, INC.	OMRNPDES
476 VANDALIA RESOURCES, INC.	OMRNPDES
477 VANDALIA MINING CORPORATION	OMRNPDES
478 VANDALIA MINING CORPORATION	OMRNPDES
479 VANDALIA MINING CORPORATION	OMRNPDES
480 VANDALIA RESOURCES, INC.	OMRNPDES
481 VANDALIA MINING CORPORATION	OMRNPDES
482 CYPRUS KANAWHA CORPORATION	OMRNPDES
483 FOLA COAL COMPANY, INC.	OMRNPDES
484 APPALACHIAN MINING, INC.	OMRNPDES

485 APPALACHIAN MINING, INC.	OMRNPDES
486 CYPRUS KANAWHA CORPORATION	OMRNPDES
487 FOLA COAL COMPANY, INC.	OMRNPDES
488 VANDALIA RESOURCES, INC.	OMRNPDES
489 VANDALIA RESOURCES, INC.	OMRNPDES
490 FOLA COAL COMPANY, INC.	OMRNPDES
491 VANDALIA RESOURCES, INC.	OMRNPDES
492 VANDALIA MINING CORPORATION	OMRNPDES
493 VANDALIA RESOURCES, INC.	OMRNPDES
494 VANDALIA MINING CORPORATION	OMRNPDES
495 CYPRUS KANAWHA CORPORATION	OMRNPDES
496 PEERLESS EAGLE COAL CO.	OMRNPDES
497 FOLA COAL COMPANY, INC.	OMRNPDES
498 VANDALIA RESOURCES, INC.	OMRNPDES
499 VANDALIA RESOURCES, INC.	OMRNPDES
500 VANDALIA RESOURCES, INC.	OMRNPDES
501 VANDALIA RESOURCES, INC.	OMRNPDES
502 VANDALIA MINING CORPORATION	OMRNPDES
503 VANDALIA MINING CORPORATION	OMRNPDES
504 VANDALIA MINING CORPORATION	OMRNPDES
505 FOLA COAL COMPANY, INC.	OMRNPDES
506 PEERLESS EAGLE COAL CO.	OMRNPDES
507 PEERLESS EAGLE COAL CO.	OMRNPDES
508 EASTERN ENERGY INVESTMENTS INC	OMRNPDES
509 KMADER ENTERPRISES, CORP.	OMRNPDES
510 VANDALIA RESOURCES, INC.	OMRNPDES
511 VANDALIA RESOURCES, INC.	OMRNPDES
512 VANDALIA RESOURCES, INC.	OMRNPDES
513 CYPRUS KANAWHA CORPORATION	OMRNPDES
514 VANDALIA RESOURCES, INC.	OMRNPDES
515 PEERLESS EAGLE COAL CO.	OMRNPDES
516 PEERLESS EAGLE COAL CO.	OMRNPDES
517 PEERLESS EAGLE COAL CO.	OMRNPDES
518 PEERLESS EAGLE COAL CO.	OMRNPDES
519 VANDALIA RESOURCES, INC.	OMRNPDES
520 PEERLESS EAGLE COAL CO.	OMRNPDES
521 PEERLESS EAGLE COAL CO.	OMRNPDES
522 PEERLESS EAGLE COAL CO.	OMRNPDES
523 B & S CONTRACTING COMPANY	OMRNPDES
524 VANDALIA RESOURCES, INC.	OMRNPDES
525 VANDALIA RESOURCES, INC.	OMRNPDES
526 VANDALIA RESOURCES, INC.	OMRNPDES
527 CYPRUS KANAWHA CORPORATION	OMRNPDES
528 B & S CONTRACTING COMPANY	OMRNPDES
529 B & S CONTRACTING COMPANY	OMRNPDES
530 VANDALIA RESOURCES, INC.	OMRNPDES
531 PEERLESS EAGLE COAL CO.	OMRNPDES
532 PEERLESS EAGLE COAL CO.	OMRNPDES
533 PEERLESS EAGLE COAL CO.	OMRNPDES
534 PEERLESS EAGLE COAL CO.	OMRNPDES
535 VANDALIA RESOURCES, INC.	OMRNPDES
536 PEERLESS EAGLE COAL CO.	OMRNPDES
537 PEERLESS EAGLE COAL CO.	OMRNPDES
538 VANDALIA RESOURCES, INC.	OMRNPDES

539 VANDALIA RESOURCES, INC.	OMRNPDES
540 PEERLESS EAGLE COAL CO.	OMRNPDES
541 EASTERN ENERGY INVESTMENTS INC	OMRNPDES
542 CYPRUS KANAWHA CORPORATION	OMRNPDES
543 VANDALIA RESOURCES, INC.	OMRNPDES
544 PEERLESS EAGLE COAL CO.	OMRNPDES
545 PEERLESS EAGLE COAL CO.	OMRNPDES
546 PEERLESS EAGLE COAL CO.	OMRNPDES
547 VANDALIA RESOURCES, INC.	OMRNPDES
548 PEERLESS EAGLE COAL CO.	OMRNPDES
549 PEERLESS EAGLE COAL CO.	OMRNPDES
550 CYPRUS KANAWHA CORPORATION	OMRNPDES
551 VANDALIA RESOURCES, INC.	OMRNPDES
552 KMADER ENTERPRISES, CORP.	OMRNPDES
553 PEERLESS EAGLE COAL CO.	OMRNPDES
554 PEERLESS EAGLE COAL CO.	OMRNPDES
555 PEERLESS EAGLE COAL CO.	OMRNPDES
556 VANDALIA RESOURCES, INC.	OMRNPDES
557 KMADER ENTERPRISES, CORP.	OMRNPDES
558 PEERLESS EAGLE COAL CO.	OMRNPDES
559 PEERLESS EAGLE COAL CO.	OMRNPDES
560 PEERLESS EAGLE COAL CO.	OMRNPDES
561 PEERLESS EAGLE COAL CO.	OMRNPDES
562 CYPRUS KANAWHA CORPORATION	OMRNPDES
563 PEERLESS EAGLE COAL CO.	OMRNPDES
564 PEERLESS EAGLE COAL CO.	OMRNPDES
565 PEERLESS EAGLE COAL CO.	OMRNPDES
566 PEERLESS EAGLE COAL CO.	OMRNPDES
567 PEERLESS EAGLE COAL CO.	OMRNPDES
568 PEERLESS EAGLE COAL CO.	OMRNPDES
569 VANDALIA RESOURCES, INC.	OMRNPDES
570 VANDALIA RESOURCES, INC.	OMRNPDES
571 VANDALIA RESOURCES, INC.	OMRNPDES
572 VANDALIA RESOURCES, INC.	OMRNPDES
573 PEERLESS EAGLE COAL CO.	OMRNPDES
574 PEERLESS EAGLE COAL CO.	OMRNPDES
575 CANION COAL COMPANY	OMRNPDES
576 CANION COAL COMPANY	OMRNPDES
577 VANDALIA RESOURCES, INC.	OMRNPDES
578 EASTERN ENERGY INVESTMENTS INC	OMRNPDES
579 SUMMERSVILLE FIVE-BLOCK COAL	OMRNPDES
580 SUMMERSVILLE FIVE-BLOCK COAL	OMRNPDES
581 SUMMERSVILLE FIVE-BLOCK COAL	OMRNPDES
582 SUMMERSVILLE FIVE-BLOCK COAL	OMRNPDES
583 SUMMERSVILLE FIVE-BLOCK COAL	OMRNPDES
584 SUMMERSVILLE FIVE-BLOCK COAL	OMRNPDES
585 SUMMERSVILLE FIVE-BLOCK COAL	OMRNPDES
586 SUMMERSVILLE FIVE-BLOCK COAL	OMRNPDES
587 VANDALIA RESOURCES, INC.	OMRNPDES
588 VANDALIA RESOURCES, INC.	OMRNPDES
589 PEERLESS EAGLE COAL CO.	OMRNPDES
590 VANDALIA RESOURCES, INC.	OMRNPDES
591 PEERLESS EAGLE COAL CO.	OMRNPDES
592 PEERLESS EAGLE COAL CO.	OMRNPDES

593 VANDALIA RESOURCES, INC.	OMRNPDES
594 VANDALIA RESOURCES, INC.	OMRNPDES
595 PEERLESS EAGLE COAL CO.	OMRNPDES
596 SUMMERSVILLE FIVE-BLOCK COAL	OMRNPDES
597 VANDALIA RESOURCES, INC.	OMRNPDES
598 VANDALIA RESOURCES, INC.	OMRNPDES
599 VANDALIA RESOURCES, INC.	OMRNPDES
600 VANDALIA RESOURCES, INC.	OMRNPDES
601 SUMMERSVILLE FIVE-BLOCK COAL	OMRNPDES
602 SUMMERSVILLE FIVE-BLOCK COAL	OMRNPDES
603 SUMMERSVILLE FIVE-BLOCK COAL	OMRNPDES
604 SUMMERSVILLE FIVE-BLOCK COAL	OMRNPDES
605 VANDALIA RESOURCES, INC.	OMRNPDES
606 VANDALIA RESOURCES, INC.	OMRNPDES
607 PEERLESS EAGLE COAL CO.	OMRNPDES
608 SUMMERSVILLE FIVE-BLOCK COAL	OMRNPDES
609 SUMMERSVILLE FIVE-BLOCK COAL	OMRNPDES
610 VANDALIA RESOURCES, INC.	OMRNPDES
611 SUMMERSVILLE FIVE-BLOCK COAL	OMRNPDES
612 SUMMERSVILLE FIVE-BLOCK COAL	OMRNPDES
613 SUMMERSVILLE FIVE-BLOCK COAL	OMRNPDES
614 VANDALIA RESOURCES, INC.	OMRNPDES
615 SUMMERSVILLE FIVE-BLOCK COAL	OMRNPDES
616 VANDALIA MINING CORPORATION	OMRNPDES
617 SUMMERSVILLE FIVE-BLOCK COAL	OMRNPDES
618 ZY COAL COMPANY, INC.	OMRNPDES
619 SUMMERSVILLE FIVE-BLOCK COAL	OMRNPDES
620 VANDALIA MINING CORPORATION	OMRNPDES
621 VANDALIA MINING CORPORATION	OMRNPDES
622 EVERGREEN MINING COMPANY	OMRNPDES
623 VANDALIA MINING CORPORATION	OMRNPDES
624 VANDALIA MINING CORPORATION	OMRNPDES
625 SUMMERSVILLE FIVE-BLOCK COAL	OMRNPDES
626 SUMMERSVILLE FIVE-BLOCK COAL	OMRNPDES
627 ZY COAL COMPANY, INC.	OMRNPDES
628 VANDALIA MINING CORPORATION	OMRNPDES
629 VANDALIA MINING CORPORATION	OMRNPDES
630 VANDALIA RESOURCES, INC.	OMRNPDES
631 SUMMERSVILLE FIVE-BLOCK COAL	OMRNPDES
632 PEERLESS EAGLE COAL COMPANY	OMRNPDES
633 VANDALIA MINING CORPORATION	OMRNPDES
634 PEERLESS EAGLE COAL COMPANY	OMRNPDES
635 VANDALIA MINING CORPORATION	OMRNPDES
636 SUMMERSVILLE FIVE-BLOCK COAL	OMRNPDES
637 SUMMERSVILLE FIVE-BLOCK COAL	OMRNPDES
638 SUMMERSVILLE FIVE-BLOCK COAL	OMRNPDES
639 SUMMERSVILLE FIVE-BLOCK COAL	OMRNPDES
640 SUMMERSVILLE FIVE-BLOCK COAL	OMRNPDES
641 VANDALIA MINING CORPORATION	OMRNPDES
642 PEERLESS EAGLE COAL COMPANY	OMRNPDES
643 PEERLESS EAGLE COAL COMPANY	OMRNPDES
644 VANDALIA MINING CORPORATION	OMRNPDES
645 VANDALIA MINING CORPORATION	OMRNPDES
646 PEERLESS EAGLE COAL COMPANY	OMRNPDES

647 PEERLESS EAGLE COAL COMPANY	OMRNPDES
648 VANDALIA RESOURCES, INC.	OMRNPDES
649 VANDALIA MINING CORPORATION	OMRNPDES
650 VANDALIA MINING CORPORATION	OMRNPDES
651 NIX MINING COMPANY	OMRNPDES
652 NEW LAND LEASING COMPANY, INC.	OMRNPDES
653 PEERLESS EAGLE COAL COMPANY	OMRNPDES
654 PEERLESS EAGLE COAL COMPANY	OMRNPDES
655 NIX MINING COMPANY	OMRNPDES
656 NEW LAND LEASING COMPANY, INC.	OMRNPDES
657 NIX MINING COMPANY	OMRNPDES
658 NIX MINING COMPANY	OMRNPDES
659 PEERLESS EAGLE COAL COMPANY	OMRNPDES
660 VMS, LTD.	OMRNPDES
661 VMS, LTD.	OMRNPDES
662 VMS, LTD.	OMRNPDES
663 VMS, LTD.	OMRNPDES
664 VMS, LTD.	OMRNPDES
665 VMS, LTD.	OMRNPDES
666 VMS, LTD.	OMRNPDES
667 NEW LAND LEASING COMPANY, INC.	OMRNPDES
668 NIX MINING COMPANY	OMRNPDES
669 NEW LAND LEASING COMPANY, INC.	OMRNPDES
670 NIX MINING COMPANY	OMRNPDES
671 MAJESTIC MINING, INC.	OMRNPDES
672 NEW LAND LEASING COMPANY, INC.	OMRNPDES
673 MAJESTIC MINING, INC.	OMRNPDES
674 NEW LAND LEASING COMPANY, INC.	OMRNPDES
675 ZY COAL COMPANY, INC.	OMRNPDES
676 NIX MINING COMPANY	OMRNPDES
677 NEW LAND LEASING COMPANY, INC.	OMRNPDES
678 LAND USE CORPORATION	OMRNPDES
679 MAJESTIC MINING, INC.	OMRNPDES
680 LAND USE CORPORATION	OMRNPDES
681 PEERLESS EAGLE COAL COMPANY	OMRNPDES
682 NEW LAND LEASING COMPANY, INC.	OMRNPDES
683 PHOENIX RESOURCES, INC.	OMRNPDES
684 NIX MINING COMPANY	OMRNPDES
685 NIX MINING COMPANY	OMRNPDES
686 LAND USE CORPORATION	OMRNPDES
687 COSTAIN MINING, INC.	OMRNPDES
688 NIX MINING COMPANY	OMRNPDES
689 NIX MINING COMPANY	OMRNPDES
690 NEW LAND LEASING COMPANY, INC.	OMRNPDES
691 NIX MINING COMPANY	OMRNPDES
692 LAND USE CORPORATION	OMRNPDES
693 LAND USE CORPORATION	OMRNPDES
694 LAND USE CORPORATION	OMRNPDES
695 NIX MINING COMPANY	OMRNPDES
696 NEW LAND LEASING COMPANY, INC.	OMRNPDES
697 WACO OIL & GAS CO INC	OMRNPDES
698 MAJESTIC MINING, INC.	OMRNPDES
699 MAJESTIC MINING, INC.	OMRNPDES
700 NEW LAND LEASING COMPANY, INC.	OMRNPDES

701 COSTAIN MINING, INC.	OMRNPDES
702 NIX MINING COMPANY	OMRNPDES
703 NEW LAND LEASING COMPANY, INC.	OMRNPDES
704 NIX MINING COMPANY	OMRNPDES
705 NIX MINING COMPANY	OMRNPDES
706 LAND USE CORPORATION	OMRNPDES
707 COSTAIN MINING, INC.	OMRNPDES
708 LAND USE CORPORATION	OMRNPDES
709 NEW LAND LEASING COMPANY, INC.	OMRNPDES
710 WACO OIL & GAS CO INC	OMRNPDES
711 WACO OIL & GAS CO INC	OMRNPDES
712 LAND USE CORPORATION	OMRNPDES
713 COSTAIN MINING, INC.	OMRNPDES
714 COSTAIN MINING, INC.	OMRNPDES
715 LAND USE CORPORATION	OMRNPDES
716 COSTAIN MINING, INC.	OMRNPDES
717 COSTAIN MINING, INC.	OMRNPDES
718 LAND USE CORPORATION	OMRNPDES
719 COSTAIN MINING, INC.	OMRNPDES
720 COSTAIN MINING, INC.	OMRNPDES
721 MAJESTIC MINING, INC.	OMRNPDES
722 MAJESTIC MINING, INC.	OMRNPDES
723 LAND USE CORPORATION	OMRNPDES
724 COSTAIN MINING, INC.	OMRNPDES
725 LAND USE CORPORATION	OMRNPDES
726 LAND USE CORPORATION	OMRNPDES
727 LAND USE CORPORATION	OMRNPDES
728 MAJESTIC MINING, INC.	OMRNPDES
729 MAJESTIC MINING, INC.	OMRNPDES
730 COSTAIN MINING, INC.	OMRNPDES
731 LAND USE CORPORATION	OMRNPDES
732 EVERGREEN MINING COMPANY	OMRNPDES
733 MAJESTIC MINING, INC.	OMRNPDES
734 ZY COAL COMPANY, INC.	OMRNPDES
735 EVERGREEN MINING COMPANY	OMRNPDES
736 LAND USE CORPORATION	OMRNPDES
737 LAND USE CORPORATION	OMRNPDES
738 EVERGREEN MINING COMPANY	OMRNPDES
739 GAULEY EAGLE HOLDINGS, INC.	OMRNPDES
740 EVERGREEN MINING COMPANY	OMRNPDES
741 ZY COAL COMPANY, INC.	OMRNPDES
742 RUPERT FEED & SUPPLY COMPANY	OMRNPDES
743 RUPERT FEED & SUPPLY COMPANY	OMRNPDES
744 RUPERT FEED & SUPPLY COMPANY	OMRNPDES
745 DAYTON RESOURCES COMPANY	OMRNPDES
746 MAJESTIC MINING, INC.	OMRNPDES
747 GAULEY EAGLE HOLDINGS, INC.	OMRNPDES
748 RUPERT FEED & SUPPLY COMPANY	OMRNPDES
749 GAULEY EAGLE HOLDINGS, INC.	OMRNPDES
750 EVERGREEN MINING COMPANY	OMRNPDES
751 ZY COAL COMPANY, INC.	OMRNPDES
752 GAULEY EAGLE HOLDINGS, INC.	OMRNPDES
753 GAULEY EAGLE HOLDINGS, INC.	OMRNPDES
754 ZY COAL COMPANY, INC.	OMRNPDES

755 GAULEY EAGLE HOLDINGS, INC.	OMRNPDES
756 RUPERT FEED & SUPPLY COMPANY	OMRNPDES
757 JACK RUN COAL CORPORATION, INC.	OMRNPDES
758 EVERGREEN MINING COMPANY	OMRNPDES
759 EVERGREEN MINING COMPANY	OMRNPDES
760 MAJESTIC MINING, INC.	OMRNPDES
761 MAJESTIC MINING, INC.	OMRNPDES
762 MAJESTIC MINING, INC.	OMRNPDES
763 MAJESTIC MINING, INC.	OMRNPDES
764 MAJESTIC MINING, INC.	OMRNPDES
765 EVERGREEN MINING COMPANY	OMRNPDES
766 EVERGREEN MINING COMPANY	OMRNPDES
767 ZY COAL COMPANY, INC.	OMRNPDES
768 EVERGREEN MINING COMPANY	OMRNPDES
769 EVERGREEN MINING COMPANY	OMRNPDES
770 EVERGREEN MINING COMPANY	OMRNPDES
771 EVERGREEN MINING COMPANY	OMRNPDES
772 EVERGREEN MINING COMPANY	OMRNPDES
773 ZY COAL COMPANY, INC.	OMRNPDES
774 EVERGREEN MINING COMPANY	OMRNPDES
775 COSTAIN COAL, INC.	OMRNPDES
776 COSTAIN COAL, INC.	OMRNPDES
777 ISLAND CREEK COAL COMPANY	OMRNPDES
778 ISLAND CREEK COAL COMPANY	OMRNPDES
779 COSTAIN COAL, INC.	OMRNPDES
780 ZY COAL COMPANY, INC.	OMRNPDES
781 COSTAIN COAL, INC.	OMRNPDES
782 EVERGREEN MINING COMPANY	OMRNPDES
783 EVERGREEN MINING COMPANY	OMRNPDES
784 COSTAIN COAL, INC.	OMRNPDES
785 EVERGREEN MINING COMPANY	OMRNPDES
786 COSTAIN COAL, INC.	OMRNPDES
787 EVERGREEN MINING COMPANY	OMRNPDES
788 EVERGREEN MINING COMPANY	OMRNPDES
789 COSTAIN COAL, INC.	OMRNPDES
790 COSTAIN COAL, INC.	OMRNPDES
791 COSTAIN COAL, INC.	OMRNPDES
792 EVERGREEN MINING COMPANY	OMRNPDES
793 GAULEY EAGLE HOLDINGS, INC.	OMRNPDES
794 ZY COAL COMPANY, INC.	OMRNPDES
795 COSTAIN COAL, INC.	OMRNPDES
796 EVERGREEN MINING COMPANY	OMRNPDES
797 EVERGREEN MINING COMPANY	OMRNPDES
798 EVERGREEN MINING COMPANY	OMRNPDES
799 EVERGREEN MINING COMPANY	OMRNPDES
800 GAULEY EAGLE HOLDINGS, INC.	OMRNPDES
801 TERRY EAGLE COAL COMPANY	OMRNPDES
802 GAULEY EAGLE HOLDINGS, INC.	OMRNPDES
803 MAJESTIC MINING, INC.	OMRNPDES
804 ZY COAL COMPANY, INC.	OMRNPDES
805 GAULEY EAGLE HOLDINGS, INC.	OMRNPDES
806 EVERGREEN MINING COMPANY	OMRNPDES
807 ZY COAL COMPANY, INC.	OMRNPDES
808 COSTAIN COAL, INC.	OMRNPDES

809 ZY COAL COMPANY, INC.	OMRNPDES
810 COSTAIN COAL, INC.	OMRNPDES
811 COSTAIN COAL, INC.	OMRNPDES
812 MAJESTIC MINING, INC.	OMRNPDES
813 ZY COAL COMPANY, INC.	OMRNPDES
814 ZY COAL COMPANY, INC.	OMRNPDES
815 ZY COAL COMPANY, INC.	OMRNPDES
816 TERRY EAGLE COAL COMPANY	OMRNPDES
817 GAULEY EAGLE HOLDINGS, INC.	OMRNPDES
818 EVERGREEN MINING COMPANY	OMRNPDES
819 ZY COAL COMPANY, INC.	OMRNPDES
820 ZY COAL COMPANY, INC.	OMRNPDES
821 EVERGREEN MINING COMPANY	OMRNPDES
822 EVERGREEN MINING COMPANY	OMRNPDES
823 GAULEY EAGLE HOLDINGS, INC.	OMRNPDES
824 ZY COAL COMPANY, INC.	OMRNPDES
825 ZY COAL COMPANY, INC.	OMRNPDES
826 TERRY EAGLE COAL COMPANY	OMRNPDES
827 EVERGREEN MINING COMPANY	OMRNPDES
828 EVERGREEN MINING COMPANY	OMRNPDES
829 ZY COAL COMPANY, INC.	OMRNPDES
830 ZY COAL COMPANY, INC.	OMRNPDES
831 ZY COAL COMPANY, INC.	OMRNPDES
832 ZY COAL COMPANY, INC.	OMRNPDES
833 ZY COAL COMPANY, INC.	OMRNPDES
834 TERRY EAGLE COAL COMPANY	OMRNPDES
835 SPRING RIDGE COAL COMPANY	OMRNPDES
836 EVERGREEN MINING COMPANY	OMRNPDES
837 ZY COAL COMPANY, INC.	OMRNPDES
838 ZY COAL COMPANY, INC.	OMRNPDES
839 TERRY EAGLE COAL COMPANY	OMRNPDES
840 ZY COAL COMPANY, INC.	OMRNPDES
841 ZY COAL COMPANY, INC.	OMRNPDES
842 ZY COAL COMPANY, INC.	OMRNPDES
843 ZY COAL COMPANY, INC.	OMRNPDES
844 TERRY EAGLE COAL COMPANY	OMRNPDES
845 TERRY EAGLE COAL COMPANY	OMRNPDES
846 TERRY EAGLE COAL COMPANY	OMRNPDES
847 EVERGREEN MINING COMPANY	OMRNPDES
848 ZY COAL COMPANY, INC.	OMRNPDES
849 ZY COAL COMPANY, INC.	OMRNPDES
850 ZY COAL COMPANY, INC.	OMRNPDES
851 TERRY EAGLE COAL COMPANY	OMRNPDES
852 TERRY EAGLE COAL COMPANY	OMRNPDES
853 EVERGREEN MINING COMPANY	OMRNPDES
854 ZY COAL COMPANY, INC.	OMRNPDES
855 ZY COAL COMPANY, INC.	OMRNPDES
856 GAULEY EAGLE HOLDINGS, INC.	OMRNPDES
857 ZY COAL COMPANY, INC.	OMRNPDES
858 ZY COAL COMPANY, INC.	OMRNPDES
859 TERRY EAGLE COAL COMPANY	OMRNPDES
860 TERRY EAGLE COAL COMPANY	OMRNPDES
861 EVERGREEN MINING COMPANY	OMRNPDES
862 TERRY EAGLE COAL COMPANY	OMRNPDES

863 GAULEY EAGLE HOLDINGS, INC.	OMRNPDES
864 ZY COAL COMPANY, INC.	OMRNPDES
865 ZY COAL COMPANY, INC.	OMRNPDES
866 EVERGREEN MINING COMPANY	OMRNPDES
867 GAULEY EAGLE HOLDINGS, INC.	OMRNPDES
868 ZY COAL COMPANY, INC.	OMRNPDES
869 ZY COAL COMPANY, INC.	OMRNPDES
870 GAULEY EAGLE HOLDINGS, INC.	OMRNPDES
871 TERRY EAGLE COAL COMPANY	OMRNPDES
872 GAULEY EAGLE HOLDINGS, INC.	OMRNPDES
873 TERRY EAGLE COAL COMPANY	OMRNPDES
874 TERRY EAGLE COAL COMPANY	OMRNPDES
875 TERRY EAGLE COAL COMPANY	OMRNPDES
876 GAULEY EAGLE HOLDINGS, INC.	OMRNPDES
877 TERRY EAGLE COAL COMPANY	OMRNPDES
878 TERRY EAGLE COAL COMPANY	OMRNPDES
879 EVERGREEN MINING COMPANY	OMRNPDES
880 TERRY EAGLE COAL COMPANY	OMRNPDES
881 ZY COAL COMPANY, INC.	OMRNPDES
882 GAULEY EAGLE HOLDINGS, INC.	OMRNPDES
883 TERRY EAGLE COAL COMPANY	OMRNPDES
884 ZY COAL COMPANY, INC.	OMRNPDES
885 ZY COAL COMPANY, INC.	OMRNPDES
886 TERRY EAGLE COAL COMPANY	OMRNPDES
887 EVERGREEN MINING COMPANY	OMRNPDES
888 BRAXTON MINERALS, INC.	OMRNPDES
889 GAULEY EAGLE HOLDINGS, INC.	OMRNPDES
890 BRAXTON MINERALS, INC.	OMRNPDES
891 EVERGREEN MINING COMPANY	OMRNPDES
892 SPRING RIDGE COAL COMPANY	OMRNPDES
893 BRAXTON MINERALS, INC.	OMRNPDES
894 EVERGREEN MINING COMPANY	OMRNPDES
895 B & S CONTRACTING, INC.	OMRNPDES
896 TERRY EAGLE COAL COMPANY	OMRNPDES
897 SPRING RIDGE COAL COMPANY	OMRNPDES
898 SPRING RIDGE COAL COMPANY	OMRNPDES
899 SUMMERSVILLE FIVE BLOCK CORP.	OMRNPDES
900 TERRY EAGLE COAL COMPANY	OMRNPDES
901 HICA CORPORATION	OMRNPDES
902 TERRY EAGLE COAL COMPANY	OMRNPDES
903 HICA CORPORATION	OMRNPDES
904 SUMMERSVILLE FIVE BLOCK CORP.	OMRNPDES
905 SUMMERSVILLE FIVE BLOCK CORP.	OMRNPDES
906 SUMMERSVILLE FIVE BLOCK CORP.	OMRNPDES
907 TERRY EAGLE COAL COMPANY	OMRNPDES
908 CARBON RIDGE MINING COMPANY	OMRNPDES
909 HICA CORPORATION	OMRNPDES
910 SPRING RIDGE COAL COMPANY	OMRNPDES
911 CARBON RIDGE MINING COMPANY	OMRNPDES
912 GAULEY EAGLE HOLDINGS, INC.	OMRNPDES
913 SPRING RIDGE COAL COMPANY	OMRNPDES
914 SUMMERSVILLE FIVE BLOCK CORP.	OMRNPDES
915 HICA CORPORATION	OMRNPDES
916 SPRING RIDGE COAL COMPANY	OMRNPDES

917 BRAXTON MINERALS, INC.	OMRNPDES
918 TERRY EAGLE COAL COMPANY	OMRNPDES
919 ZY COAL COMPANY, INC.	OMRNPDES
920 HICA CORPORATION	OMRNPDES
921 SPRING RIDGE COAL COMPANY	OMRNPDES
922 ELK RIVER SEWELL COAL COMPANY	OMRNPDES
923 EVERGREEN MINING COMPANY	OMRNPDES
924 HICA CORPORATION	OMRNPDES
925 SPRING RIDGE COAL COMPANY	OMRNPDES
926 BRAXTON MINERALS, INC.	OMRNPDES
927 ZY COAL COMPANY, INC.	OMRNPDES
928 GAULEY EAGLE HOLDINGS, INC.	OMRNPDES
929 HICA CORPORATION	OMRNPDES
930 HICA CORPORATION	OMRNPDES
931 HICA CORPORATION	OMRNPDES
932 HICA CORPORATION	OMRNPDES
933 HICA CORPORATION	OMRNPDES
934 HICA CORPORATION	OMRNPDES
935 HICA CORPORATION	OMRNPDES
936 HICA CORPORATION	OMRNPDES
937 HICA CORPORATION	OMRNPDES
938 HICA CORPORATION	OMRNPDES
939 HICA CORPORATION	OMRNPDES
940 HICA CORPORATION	OMRNPDES
941 HICA CORPORATION	OMRNPDES
942 HICA CORPORATION	OMRNPDES
943 HICA CORPORATION	OMRNPDES
944 HICA CORPORATION	OMRNPDES
945 HICA CORPORATION	OMRNPDES
946 HICA CORPORATION	OMRNPDES
947 HICA CORPORATION	OMRNPDES
948 HICA CORPORATION	OMRNPDES
949 HICA CORPORATION	OMRNPDES
950 HICA CORPORATION	OMRNPDES
951 HICA CORPORATION	OMRNPDES
952 HICA CORPORATION	OMRNPDES
953 ELK RIVER SEWELL COAL COMPANY	OMRNPDES
954 ZY COAL COMPANY, INC.	OMRNPDES
955 ZY COAL COMPANY, INC.	OMRNPDES
956 ZY COAL COMPANY, INC.	OMRNPDES
957 ZY COAL COMPANY, INC.	OMRNPDES
958 ZY COAL COMPANY, INC.	OMRNPDES
959 ZY COAL COMPANY, INC.	OMRNPDES
960 ZY COAL COMPANY, INC.	OMRNPDES
961 ZY COAL COMPANY, INC.	OMRNPDES
962 TERRY EAGLE COAL COMPANY	OMRNPDES
963 BRAXTON MINERALS, INC.	OMRNPDES
964 EVERGREEN MINING COMPANY	OMRNPDES
965 GAULEY EAGLE HOLDINGS, INC.	OMRNPDES
966 ZY COAL COMPANY, INC.	OMRNPDES
967 ZY COAL COMPANY, INC.	OMRNPDES
968 ZY COAL COMPANY, INC.	OMRNPDES
969 ELK RIVER SEWELL COAL COMPANY	OMRNPDES
970 ELK RIVER SEWELL COAL COMPANY	OMRNPDES

971 TERRY EAGLE COAL COMPANY	OMRNPDES
972 SPRING RIDGE COAL COMPANY	OMRNPDES
973 ELK RIVER SEWELL COAL COMPANY	OMRNPDES
974 ZY COAL COMPANY, INC.	OMRNPDES
975 EVERGREEN MINING COMPANY	OMRNPDES
976 HICA CORPORATION	OMRNPDES
977 SPRING RIDGE COAL COMPANY	OMRNPDES
978 BRAXTON MINERALS, INC.	OMRNPDES
979 EVERGREEN MINING COMPANY	OMRNPDES
980 ZY COAL COMPANY, INC.	OMRNPDES
981 ZY COAL COMPANY, INC.	OMRNPDES
982 ZY COAL COMPANY, INC.	OMRNPDES
983 ZY COAL COMPANY, INC.	OMRNPDES
984 ZY COAL COMPANY, INC.	OMRNPDES
985 ZY COAL COMPANY, INC.	OMRNPDES
986 SPRING RIDGE COAL COMPANY	OMRNPDES
987 ZY COAL COMPANY, INC.	OMRNPDES
988 ZY COAL COMPANY, INC.	OMRNPDES
989 ZY COAL COMPANY, INC.	OMRNPDES
990 SPRING RIDGE COAL COMPANY	OMRNPDES
991 ELK RIVER SEWELL COAL COMPANY	OMRNPDES
992 TERRY EAGLE COAL COMPANY	OMRNPDES
993 TERRY EAGLE COAL COMPANY	OMRNPDES
994 ZY COAL COMPANY, INC.	OMRNPDES
995 ZY COAL COMPANY, INC.	OMRNPDES
996 ZY COAL COMPANY, INC.	OMRNPDES
997 EVERGREEN MINING COMPANY	OMRNPDES
998 ZY COAL COMPANY, INC.	OMRNPDES
999 ZY COAL COMPANY, INC.	OMRNPDES
1000 EVERGREEN MINING COMPANY	OMRNPDES
1001 EVERGREEN MINING COMPANY	OMRNPDES
1002 ELK RIVER SEWELL COAL COMPANY	OMRNPDES
1003 EVERGREEN MINING COMPANY	OMRNPDES
1004 EVERGREEN MINING COMPANY	OMRNPDES
1005 EVERGREEN MINING COMPANY	OMRNPDES
1006 TERRY EAGLE COAL COMPANY	OMRNPDES
1007 ELK RIVER SEWELL COAL COMPANY	OMRNPDES
1008 ELK RIVER SEWELL COAL COMPANY	OMRNPDES
1009 ELK RIVER SEWELL COAL COMPANY	OMRNPDES
1010 ELK RIVER SEWELL COAL COMPANY	OMRNPDES
1011 ELK RIVER SEWELL COAL COMPANY	OMRNPDES
1012 ELK RIVER SEWELL COAL COMPANY	OMRNPDES
1013 EVERGREEN MINING COMPANY	OMRNPDES
1014 ELK RIVER SEWELL COAL COMPANY	OMRNPDES
1015 ELK RIVER SEWELL COAL COMPANY	OMRNPDES
1016 ELK RIVER SEWELL COAL COMPANY	OMRNPDES
1017 ELK RIVER SEWELL COAL COMPANY	OMRNPDES
1018 ELK RIVER SEWELL COAL COMPANY	OMRNPDES
1019 EVERGREEN MINING COMPANY	OMRNPDES
1020 ELK RIVER SEWELL COAL COMPANY	OMRNPDES
1021 ELK RIVER SEWELL COAL COMPANY	OMRNPDES
1022 BRAXTON MINERALS, INC.	OMRNPDES
1023 EVERGREEN MINING COMPANY	OMRNPDES
1024 ELK RIVER SEWELL COAL COMPANY	OMRNPDES

1025 BRAXTON MINERALS, INC.	OMRNPDES
1026 ELK RIVER SEWELL COAL COMPANY	OMRNPDES
1027 ELK RIVER SEWELL COAL COMPANY	OMRNPDES
1028 ELK RIVER SEWELL COAL COMPANY	OMRNPDES
1029 ELK RIVER SEWELL COAL COMPANY	OMRNPDES
1030 BRAXTON MINERALS, INC.	OMRNPDES
1031 ELK RIVER SEWELL COAL COMPANY	OMRNPDES
1032 ELK RIVER SEWELL COAL COMPANY	OMRNPDES
1033 ELK RIVER SEWELL COAL COMPANY	OMRNPDES
1034 SPRING RIDGE COAL COMPANY	OMRNPDES
1035 ELK RIVER SEWELL COAL COMPANY	OMRNPDES
1036 BRAXTON MINERALS, INC.	OMRNPDES
1037 ELK RIVER SEWELL COAL COMPANY	OMRNPDES
1038 ELK RIVER SEWELL COAL COMPANY	OMRNPDES
1039 ELK RIVER SEWELL COAL COMPANY	OMRNPDES
1040 ELK RIVER SEWELL COAL COMPANY	OMRNPDES
1041 SPRING RIDGE COAL COMPANY	OMRNPDES
1042 SPRING RIDGE COAL COMPANY	OMRNPDES
1043 ELK RIVER SEWELL COAL COMPANY	OMRNPDES
1044 ELK RIVER SEWELL COAL COMPANY	OMRNPDES
1045 ELK RIVER SEWELL COAL COMPANY	OMRNPDES
1046 SPRING RIDGE COAL COMPANY	OMRNPDES
1047 BRAXTON MINERALS, INC.	OMRNPDES
1048 ELK RIVER SEWELL COAL COMPANY	OMRNPDES
1049 ELK RIVER SEWELL COAL COMPANY	OMRNPDES
1050 ELK RIVER SEWELL COAL COMPANY	OMRNPDES
1051 SPRING RIDGE COAL COMPANY	OMRNPDES
1052 SPRING RIDGE COAL COMPANY	OMRNPDES
1053 E F A, INC.	OMRNPDES
1054 BRAXTON MINERALS, INC.	OMRNPDES
1055 SPRING RIDGE COAL COMPANY	OMRNPDES
1056 ELK RIVER SEWELL COAL COMPANY	OMRNPDES
1057 E F A, INC.	OMRNPDES
1058 ELK RIVER SEWELL COAL COMPANY	OMRNPDES
1059 SPRING RIDGE COAL COMPANY	OMRNPDES
1060 SPRING RIDGE COAL COMPANY	OMRNPDES
1061 BRAXTON MINERALS, INC.	OMRNPDES
1062 E F A, INC.	OMRNPDES
1063 ELK RIVER SEWELL COAL COMPANY	OMRNPDES
1064 E F A, INC.	OMRNPDES
1065 WEST LEATHERWOOD MINING, INC.	OMRNPDES
1066 BRAXTON MINERALS, INC.	OMRNPDES
1067 SPRING RIDGE COAL COMPANY	OMRNPDES
1068 ELK RIVER SEWELL COAL COMPANY	OMRNPDES
1069 SPRING RIDGE COAL COMPANY	OMRNPDES
1070 E F A, INC.	OMRNPDES
1071 ELK RIVER SEWELL COAL COMPANY	OMRNPDES
1072 ELK RIVER SEWELL COAL COMPANY	OMRNPDES
1073 ELK RIVER SEWELL COAL COMPANY	OMRNPDES
1074 E F A, INC.	OMRNPDES
1075 ELK RIVER SEWELL COAL COMPANY	OMRNPDES
1076 ELK RIVER SEWELL COAL COMPANY	OMRNPDES
1077 BRAXTON MINERALS, INC.	OMRNPDES
1078 ELK RIVER SEWELL COAL COMPANY	OMRNPDES

1079 SPRING RIDGE COAL COMPANY	OMRNPDES
1080 ELK RIVER SEWELL COAL COMPANY	OMRNPDES
1081 SPRING RIDGE COAL COMPANY	OMRNPDES
1082 ELK RIVER SEWELL COAL COMPANY	OMRNPDES
1083 ELK RIVER SEWELL COAL COMPANY	OMRNPDES
1084 ELK RIVER SEWELL COAL COMPANY	OMRNPDES
1085 ELK RIVER SEWELL COAL COMPANY	OMRNPDES
1086 ELK RIVER SEWELL COAL COMPANY	OMRNPDES
1087 ELK RIVER SEWELL COAL COMPANY	OMRNPDES
1088 ELK RIVER SEWELL COAL COMPANY	OMRNPDES
1089 ELK RIVER SEWELL COAL COMPANY	OMRNPDES
1090 ELK RIVER SEWELL COAL COMPANY	OMRNPDES
1091 ELK RIVER SEWELL COAL COMPANY	OMRNPDES
1092 ELK RIVER SEWELL COAL COMPANY	OMRNPDES
1093 ELK RIVER SEWELL COAL COMPANY	OMRNPDES
1094 ELK RIVER SEWELL COAL COMPANY	OMRNPDES
1095 ELK RIVER SEWELL COAL COMPANY	OMRNPDES
1096 ELK RIVER SEWELL COAL COMPANY	OMRNPDES
1097 ELK RIVER SEWELL COAL COMPANY	OMRNPDES
1098 ELK RIVER SEWELL COAL COMPANY	OMRNPDES
1099 BRAXTON MINERALS, INC.	OMRNPDES
1100 ELK RIVER SEWELL COAL COMPANY	OMRNPDES
1101 ELK RIVER SEWELL COAL COMPANY	OMRNPDES
1102 ELK RIVER SEWELL COAL COMPANY	OMRNPDES
1103 ELK RIVER SEWELL COAL COMPANY	OMRNPDES
1104 ELK RIVER SEWELL COAL COMPANY	OMRNPDES
1105 ELK RIVER SEWELL COAL COMPANY	OMRNPDES
1106 ELK RIVER SEWELL COAL COMPANY	OMRNPDES
1107 ELK RIVER SEWELL COAL COMPANY	OMRNPDES
1108 ELK RIVER SEWELL COAL COMPANY	OMRNPDES
1109 BRAXTON MINERALS, INC.	OMRNPDES
1110 ELK RIVER SEWELL COAL COMPANY	OMRNPDES
1111 JULIANA MINING COMPANY, INC.	OMRNPDES
1112 JULIANA MINING COMPANY, INC.	OMRNPDES
1113 ELK RIVER SEWELL COAL COMPANY	OMRNPDES
1114 ELK RIVER SEWELL COAL COMPANY	OMRNPDES
1115 BRAXTON MINERALS, INC.	OMRNPDES
1116 ELK RIVER SEWELL COAL COMPANY	OMRNPDES
1117 ELK RIVER SEWELL COAL COMPANY	OMRNPDES
1118 JULIANA MINING COMPANY, INC.	OMRNPDES
1119 ELK RIVER SEWELL COAL COMPANY	OMRNPDES
1120 ELK RIVER SEWELL COAL COMPANY	OMRNPDES
1121 ELK RIVER SEWELL COAL COMPANY	OMRNPDES
1122 ELK RIVER SEWELL COAL COMPANY	OMRNPDES
1123 JULIANA MINING COMPANY, INC.	OMRNPDES
1124 BRAXTON MINERALS, INC.	OMRNPDES
1125 THOMAS MOUNTAIN, INC.	OMRNPDES
1126 JULIANA MINING CO INC	OMRNPDES
1127 ELK RIVER SEWELL COAL COMPANY	OMRNPDES
1128 ELK RIVER SEWELL COAL COMPANY	OMRNPDES
1129 ELK RIVER SEWELL COAL COMPANY	OMRNPDES
1130 JULIANA MINING CO INC	OMRNPDES
1131 ELK RIVER SEWELL COAL COMPANY	OMRNPDES
1132 GRIZZLY MINING INC.	OMRNPDES

1133 JULIANA MINING CO INC	OMRNPDES
1134 BRAXTON MINERALS, INC.	OMRNPDES
1135 BROOKS RUN COAL COMPANY	OMRNPDES
1136 JULIANA MINING CO INC	OMRNPDES
1137 JULIANA MINING CO INC	OMRNPDES
1138 JULIANA MINING CO INC	OMRNPDES
1139 JULIANA MINING CO INC	OMRNPDES
1140 BROOKS RUN COAL COMPANY	OMRNPDES
1141 BROOKS RUN COAL COMPANY	OMRNPDES
1142 JULIANA MINING COMPANY, INC.	OMRNPDES
1143 JULIANA MINING COMPANY, INC.	OMRNPDES
1144 JULIANA MINING COMPANY, INC.	OMRNPDES
1145 JULIANA MINING CO INC	OMRNPDES
1146 JULIANA MINING CO INC	OMRNPDES
1147 POCA RIVER MINING COMPANY	OMRNPDES
1148 JULIANA MINING COMPANY, INC.	OMRNPDES
1149 JULIANA MINING COMPANY, INC.	OMRNPDES
1150 JULIANA MINING COMPANY, INC.	OMRNPDES
1151 JULIANA MINING CO INC	OMRNPDES
1152 JULIANA COAL COMPANY	OMRNPDES
1153 JULIANA COAL COMPANY	OMRNPDES
1154 JULIANA COAL COMPANY	OMRNPDES
1155 JULIANA MINING CO INC	OMRNPDES
1156 JULIANA MINING CO INC	OMRNPDES
1157 JULIANA MINING CO INC	OMRNPDES
1158 JULIANA MINING CO INC	OMRNPDES
1159 JULIANA MINING COMPANY, INC.	OMRNPDES
1160 JULIANA MINING CO INC	OMRNPDES
1161 JULIANA MINING CO INC	OMRNPDES
1162 JULIANA MINING CO INC	OMRNPDES
1163 JULIANA MINING CO INC	OMRNPDES
1164 JULIANA MINING CO INC	OMRNPDES
1165 JULIANA MINING CO INC	OMRNPDES
1166 JULIANA MINING CO INC	OMRNPDES
1167 JULIANA MINING CO INC	OMRNPDES
1168 JULIANA MINING CO INC	OMRNPDES
1169 JULIANA MINING CO INC	OMRNPDES
1170 JULIANA MINING CO INC	OMRNPDES
1171 JULIANA COAL COMPANY	OMRNPDES
1172 JULIANA MINING CO INC	OMRNPDES
1173 JULIANA MINING CO INC	OMRNPDES
1174 JULIANA MINING CO INC	OMRNPDES
1175 JULIANA COAL COMPANY	OMRNPDES
1176 GRAFTON COAL COMPANY	OMRNPDES
1177 BROOKS RUN COAL COMPANY	OMRNPDES
1178 JULIANA MINING CO INC	OMRNPDES
1179 BROOKS RUN COAL COMPANY	OMRNPDES
1180 JULIANA MINING CO INC	OMRNPDES
1181 JULIANA MINING CO INC	OMRNPDES
1182 JULIANA MINING CO INC	OMRNPDES
1183 ELK RIVER SEWELL COAL COMPANY	OMRNPDES
1184 JULIANA MINING CO INC	OMRNPDES
1185 JULIANA MINING CO INC	OMRNPDES
1186 JULIANA MINING CO INC	OMRNPDES

1187 GRAFTON COAL COMPANY	OMRNPDES
1188 JULIANA MINING CO INC	OMRNPDES
1189 JULIANA MINING CO INC	OMRNPDES
1190 JULIANA MINING CO INC	OMRNPDES
1191 JULIANA COAL COMPANY	OMRNPDES
1192 JULIANA MINING CO INC	OMRNPDES
1193 GRAFTON COAL COMPANY	OMRNPDES
1194 BROOKS RUN COAL COMPANY	OMRNPDES
1195 JULIANA MINING CO INC	OMRNPDES
1196 JULIANA MINING CO INC	OMRNPDES
1197 JULIANA MINING CO INC	OMRNPDES
1198 GRAFTON COAL COMPANY	OMRNPDES
1199 JULIANA MINING CO INC	OMRNPDES
1200 JULIANA COAL COMPANY	OMRNPDES
1201 JULIANA MINING CO INC	OMRNPDES
1202 JULIANA COAL COMPANY	OMRNPDES
1203 JULIANA MINING CO INC	OMRNPDES
1204 JULIANA COAL COMPANY	OMRNPDES
1205 GRAFTON COAL COMPANY	OMRNPDES
1206 JULIANA MINING CO INC	OMRNPDES
1207 GRAFTON COAL COMPANY	OMRNPDES
1208 JULIANA MINING CO INC	OMRNPDES
1209 JULIANA MINING CO INC	OMRNPDES
1210 JULIANA MINING CO INC	OMRNPDES
1211 JULIANA MINING CO INC	OMRNPDES
1212 JULIANA COAL COMPANY	OMRNPDES
1213 JULIANA MINING CO INC	OMRNPDES
1214 JULIANA MINING CO INC	OMRNPDES
1215 GRAFTON COAL COMPANY	OMRNPDES
1216 JULIANA MINING CO INC	OMRNPDES
1217 JULIANA MINING CO INC	OMRNPDES
1218 JULIANA MINING CO INC	OMRNPDES
1219 JULIANA MINING CO INC	OMRNPDES
1220 JULIANA MINING CO INC	OMRNPDES
1221 JULIANA MINING CO INC	OMRNPDES
1222 GRAFTON COAL COMPANY	OMRNPDES
1223 JULIANA MINING CO INC	OMRNPDES
1224 JULIANA MINING CO INC	OMRNPDES
1225 JULIANA MINING CO INC	OMRNPDES
1226 JULIANA MINING CO INC	OMRNPDES
1227 JULIANA MINING CO INC	OMRNPDES
1228 JULIANA MINING CO INC	OMRNPDES
1229 ELK RIVER SEWELL COAL COMPANY	OMRNPDES
1230 ELK RIVER SEWELL COAL COMPANY	OMRNPDES
1231 ELK RIVER SEWELL COAL COMPANY	OMRNPDES
1232 JULIANA MINING CO INC	OMRNPDES
1233 JULIANA MINING CO INC	OMRNPDES
1234 JULIANA MINING CO INC	OMRNPDES
1235 GRAFTON COAL COMPANY	OMRNPDES
1236 ELK RIVER SEWELL COAL COMPANY	OMRNPDES
1237 JULIANA MINING CO INC	OMRNPDES
1238 JULIANA MINING CO INC	OMRNPDES
1239 JULIANA MINING CO INC	OMRNPDES
1240 JULIANA MINING CO INC	OMRNPDES

1241 JULIANA COAL COMPANY	OMRNPDES
1242 ELK RIVER SEWELL COAL COMPANY	OMRNPDES
1243 JULIANA MINING CO INC	OMRNPDES
1244 GRAFTON COAL COMPANY	OMRNPDES
1245 GRAFTON COAL COMPANY	OMRNPDES
1246 BROOKS RUN COAL COMPANY	OMRNPDES
1247 JULIANA MINING CO INC	OMRNPDES
1248 JULIANA MINING CO INC	OMRNPDES
1249 ELK RIVER SEWELL COAL COMPANY	OMRNPDES
1250 JULIANA MINING CO INC	OMRNPDES
1251 JULIANA MINING CO INC	OMRNPDES
1252 JULIANA MINING CO INC	OMRNPDES
1253 JULIANA MINING CO INC	OMRNPDES
1254 JULIANA MINING CO INC	OMRNPDES
1255 JULIANA MINING CO INC	OMRNPDES
1256 JULIANA MINING CO INC	OMRNPDES
1257 JULIANA MINING CO INC	OMRNPDES
1258 JULIANA MINING CO INC	OMRNPDES
1259 JULIANA MINING CO INC	OMRNPDES
1260 GRAFTON COAL COMPANY	OMRNPDES
1261 GRAFTON COAL COMPANY	OMRNPDES
1262 JULIANA MINING CO INC	OMRNPDES
1263 GRAFTON COAL COMPANY	OMRNPDES
1264 GRAFTON COAL COMPANY	OMRNPDES
1265 GRAFTON COAL COMPANY	OMRNPDES
1266 GRAFTON COAL COMPANY	OMRNPDES
1267 JULIANA MINING CO INC	OMRNPDES
1268 JULIANA MINING CO INC	OMRNPDES
1269 JULIANA COAL COMPANY	OMRNPDES
1270 GRAFTON COAL COMPANY	OMRNPDES
1271 JULIANA MINING CO INC	OMRNPDES
1272 JULIANA MINING CO INC	OMRNPDES
1273 GRAFTON COAL COMPANY	OMRNPDES
1274 GRAFTON COAL COMPANY	OMRNPDES
1275 GRAFTON COAL COMPANY	OMRNPDES
1276 ELK RIVER SEWELL COAL COMPANY	OMRNPDES
1277 JULIANA MINING CO INC	OMRNPDES
1278 JULIANA MINING CO INC	OMRNPDES
1279 JULIANA MINING CO INC	OMRNPDES
1280 JULIANA MINING CO INC	OMRNPDES
1281 JULIANA MINING CO INC	OMRNPDES
1282 GRAFTON COAL COMPANY	OMRNPDES
1283 JULIANA MINING CO INC	OMRNPDES
1284 JULIANA MINING CO INC	OMRNPDES
1285 JULIANA MINING CO INC	OMRNPDES
1286 GRAFTON COAL COMPANY	OMRNPDES
1287 BROOKS RUN COAL COMPANY	OMRNPDES
1288 JULIANA MINING CO INC	OMRNPDES
1289 GRAFTON COAL COMPANY	OMRNPDES
1290 GRAFTON COAL COMPANY	OMRNPDES
1291 ELK RIVER SEWELL COAL COMPANY	OMRNPDES
1292 JULIANA MINING CO INC	OMRNPDES
1293 GRAFTON COAL COMPANY	OMRNPDES
1294 GRAFTON COAL COMPANY	OMRNPDES

1295 ELK RIVER SEWELL COAL COMPANY	OMRNPDES
1296 ELK RIVER SEWELL COAL COMPANY	OMRNPDES
1297 JULIANA MINING CO INC	OMRNPDES
1298 JULIANA MINING CO INC	OMRNPDES
1299 JULIANA MINING CO INC	OMRNPDES
1300 GRAFTON COAL COMPANY	OMRNPDES
1301 ELK RIVER SEWELL COAL COMPANY	OMRNPDES
1302 ELK RIVER SEWELL COAL COMPANY	OMRNPDES
1303 ELK RIVER SEWELL COAL COMPANY	OMRNPDES
1304 ELK RIVER SEWELL COAL COMPANY	OMRNPDES
1305 JULIANA MINING CO INC	OMRNPDES
1306 GRAFTON COAL COMPANY	OMRNPDES
1307 GRAFTON COAL COMPANY	OMRNPDES
1308 JULIANA MINING CO INC	OMRNPDES
1309 JULIANA MINING CO INC	OMRNPDES
1310 ELK RIVER SEWELL COAL COMPANY	OMRNPDES
1311 JULIANA MINING CO INC	OMRNPDES
1312 JULIANA MINING CO INC	OMRNPDES
1313 JULIANA MINING CO INC	OMRNPDES
1314 GRAFTON COAL COMPANY	OMRNPDES
1315 GRAFTON COAL COMPANY	OMRNPDES
1316 ELK RIVER SEWELL COAL COMPANY	OMRNPDES
1317 ELK RIVER SEWELL COAL COMPANY	OMRNPDES
1318 JULIANA MINING CO INC	OMRNPDES
1319 JULIANA MINING CO INC	OMRNPDES
1320 GRAFTON COAL COMPANY	OMRNPDES
1321 JULIANA MINING CO INC	OMRNPDES
1322 GRAFTON COAL COMPANY	OMRNPDES
1323 GRAFTON COAL COMPANY	OMRNPDES
1324 GRAFTON COAL COMPANY	OMRNPDES
1325 JULIANA MINING CO INC	OMRNPDES
1326 GRAFTON COAL COMPANY	OMRNPDES
1327 JULIANA MINING COMPANY, INC.	OMRNPDES
1328 ELK RIVER SEWELL COAL COMPANY	OMRNPDES
1329 ELK RIVER SEWELL COAL COMPANY	OMRNPDES
1330 JULIANA MINING CO INC	OMRNPDES
1331 GRAFTON COAL COMPANY	OMRNPDES
1332 JULIANA MINING COMPANY, INC.	OMRNPDES
1333 JULIANA MINING CO INC	OMRNPDES
1334 JULIANA MINING CO INC	OMRNPDES
1335 JULIANA MINING CO INC	OMRNPDES
1336 JULIANA MINING CO INC	OMRNPDES
1337 JULIANA MINING COMPANY, INC.	OMRNPDES
1338 JULIANA MINING COMPANY, INC.	OMRNPDES
1339 JULIANA MINING CO INC	OMRNPDES
1340 JULIANA MINING COMPANY, INC.	OMRNPDES
1341 JULIANA MINING CO INC	OMRNPDES
1342 JULIANA MINING COMPANY, INC.	OMRNPDES
1343 ELK RIVER SEWELL COAL COMPANY	OMRNPDES
1344 ELK RIVER SEWELL COAL COMPANY	OMRNPDES
1345 JULIANA MINING CO INC	OMRNPDES
1346 JULIANA MINING COMPANY, INC.	OMRNPDES
1347 JULIANA MINING COMPANY, INC.	OMRNPDES
1348 JULIANA MINING CO INC	OMRNPDES

1349 JULIANA MINING CO INC	OMRNPDES
1350 ELK RIVER SEWELL COAL COMPANY	OMRNPDES
1351 JULIANA MINING CO INC	OMRNPDES
1352 JULIANA MINING CO INC	OMRNPDES
1353 JULIANA MINING COMPANY, INC.	OMRNPDES
1354 JULIANA MINING COMPANY, INC.	OMRNPDES
1355 JULIANA MINING COMPANY, INC.	OMRNPDES
1356 ELK RIVER SEWELL COAL COMPANY	OMRNPDES
1357 ELK RIVER SEWELL COAL COMPANY	OMRNPDES
1358 BROOKS RUN COAL COMPANY	OMRNPDES
1359 JULIANA MINING COMPANY, INC.	OMRNPDES
1360 JULIANA MINING CO INC	OMRNPDES
1361 ELK RIVER SEWELL COAL COMPANY	OMRNPDES
1362 JULIANA MINING CO INC	OMRNPDES
1363 JULIANA MINING COMPANY, INC.	OMRNPDES
1364 JULIANA MINING CO INC	OMRNPDES
1365 JULIANA MINING COMPANY, INC.	OMRNPDES
1366 JULIANA MINING CO INC	OMRNPDES
1367 ELK RIVER SEWELL COAL COMPANY	OMRNPDES
1368 JULIANA MINING CO INC	OMRNPDES
1369 JULIANA MINING COMPANY, INC.	OMRNPDES
1370 JULIANA MINING COMPANY, INC.	OMRNPDES
1371 JULIANA MINING COMPANY, INC.	OMRNPDES
1372 JULIANA MINING CO INC	OMRNPDES
1373 JULIANA MINING COMPANY, INC.	OMRNPDES
1374 ELK RIVER SEWELL COAL COMPANY	OMRNPDES
1375 ELK RIVER SEWELL COAL COMPANY	OMRNPDES
1376 JULIANA MINING CO INC	OMRNPDES
1377 JULIANA MINING CO INC	OMRNPDES
1378 JULIANA MINING CO INC	OMRNPDES
1379 JULIANA MINING COMPANY, INC.	OMRNPDES
1380 JULIANA MINING CO INC	OMRNPDES
1381 GRAFTON COAL COMPANY	OMRNPDES
1382 JULIANA MINING CO INC	OMRNPDES
1383 BROOKS RUN COAL COMPANY	OMRNPDES
1384 JULIANA MINING CO INC	OMRNPDES
1385 JULIANA MINING CO INC	OMRNPDES
1386 JULIANA MINING CO INC	OMRNPDES
1387 BROOKS RUN COAL COMPANY	OMRNPDES
1388 JULIANA MINING COMPANY, INC.	OMRNPDES
1389 GRAFTON COAL COMPANY	OMRNPDES
1390 GRAFTON COAL COMPANY	OMRNPDES
1391 GRAFTON COAL COMPANY	OMRNPDES
1392 JULIANA MINING COMPANY, INC.	OMRNPDES
1393 BROOKS RUN COAL COMPANY	OMRNPDES
1394 JULIANA MINING COMPANY, INC.	OMRNPDES
1395 BROOKS RUN COAL COMPANY	OMRNPDES
1396 BROOKS RUN COAL COMPANY	OMRNPDES
1397 JULIANA MINING COMPANY, INC.	OMRNPDES
1398 JULIANA MINING COMPANY, INC.	OMRNPDES
1399 JULIANA MINING COMPANY, INC.	OMRNPDES
1400 JULIANA MINING COMPANY, INC.	OMRNPDES
1401 BROOKS RUN COAL COMPANY	OMRNPDES
1402 JULIANA MINING COMPANY, INC.	OMRNPDES

1403 GRAFTON COAL COMPANY	OMRNPDES
1404 GRAFTON COAL COMPANY	OMRNPDES
1405 GRAFTON COAL COMPANY	OMRNPDES
1406 GRAFTON COAL COMPANY	OMRNPDES
1407 GRAFTON COAL COMPANY	OMRNPDES
1408 GRAFTON COAL COMPANY	OMRNPDES
1409 GRAFTON COAL COMPANY	OMRNPDES
1410 GRAFTON COAL COMPANY	OMRNPDES
1411 GRAFTON COAL COMPANY	OMRNPDES
1412 GRAFTON COAL COMPANY	OMRNPDES
1413 GRAFTON COAL COMPANY	OMRNPDES
1414 GRAFTON COAL COMPANY	OMRNPDES
1415 GRAFTON COAL COMPANY	OMRNPDES
1416 GRAFTON COAL COMPANY	OMRNPDES
1417 GRAFTON COAL COMPANY	OMRNPDES
1418 GRAFTON COAL COMPANY	OMRNPDES
1419 GRAFTON COAL COMPANY	OMRNPDES
1420 GRAFTON COAL COMPANY	OMRNPDES
1421 GRAFTON COAL COMPANY	OMRNPDES
1422 GRAFTON COAL COMPANY	OMRNPDES
1423 GRAFTON COAL COMPANY	OMRNPDES
1424 GRAFTON COAL COMPANY	OMRNPDES
1425 BROOKS RUN COAL COMPANY	OMRNPDES
1426 JULIANA MINING COMPANY, INC.	OMRNPDES
1427 BROOKS RUN COAL COMPANY	OMRNPDES
1428 JULIANA MINING COMPANY, INC.	OMRNPDES
1429 JULIANA MINING COMPANY, INC.	OMRNPDES
1430 JULIANA MINING COMPANY, INC.	OMRNPDES
1431 JULIANA MINING COMPANY, INC.	OMRNPDES
1432 JULIANA MINING COMPANY, INC.	OMRNPDES
1433 JULIANA MINING COMPANY, INC.	OMRNPDES
1434 JULIANA MINING COMPANY, INC.	OMRNPDES
1435 PAMMLID COAL COMPANY	OMRNPDES
1436 JULIANA MINING COMPANY, INC.	OMRNPDES
1437 JULIANA MINING COMPANY, INC.	OMRNPDES
1438 JULIANA MINING COMPANY, INC.	OMRNPDES
1439 JULIANA MINING COMPANY, INC.	OMRNPDES
1440 JULIANA MINING COMPANY, INC.	OMRNPDES
1441 JULIANA MINING COMPANY, INC.	OMRNPDES
1442 JULIANA MINING COMPANY, INC.	OMRNPDES
1443 JULIANA MINING COMPANY, INC.	OMRNPDES
1444 JULIANA MINING COMPANY, INC.	OMRNPDES
1445 JULIANA MINING COMPANY, INC.	OMRNPDES
1446 JULIANA MINING COMPANY, INC.	OMRNPDES
1447 JULIANA MINING COMPANY, INC.	OMRNPDES
1448 JULIANA MINING COMPANY, INC.	OMRNPDES
1449 JULIANA MINING COMPANY, INC.	OMRNPDES
1450 JULIANA MINING COMPANY, INC.	OMRNPDES
1451 JULIANA MINING COMPANY, INC.	OMRNPDES
1452 JULIANA MINING COMPANY, INC.	OMRNPDES
1453 JULIANA MINING COMPANY, INC.	OMRNPDES
1454 JULIANA MINING COMPANY, INC.	OMRNPDES
1455 JULIANA MINING COMPANY, INC.	OMRNPDES
1456 JULIANA MINING COMPANY, INC.	OMRNPDES

1457 JULIANA MINING COMPANY, INC.	OMRNPDES
1458 JULIANA MINING COMPANY, INC.	OMRNPDES
1459 JULIANA MINING COMPANY, INC.	OMRNPDES
1460 JULIANA MINING COMPANY, INC.	OMRNPDES
1461 JULIANA MINING COMPANY, INC.	OMRNPDES
1462 JULIANA MINING COMPANY, INC.	OMRNPDES
1463 T & R COAL COMPANY	OMRNPDES
1464 JULIANA MINING COMPANY, INC.	OMRNPDES
1465 JULIANA MINING COMPANY, INC.	OMRNPDES
1466 JULIANA MINING COMPANY, INC.	OMRNPDES
1467 JULIANA MINING COMPANY, INC.	OMRNPDES
1468 JULIANA MINING COMPANY, INC.	OMRNPDES
1469 JULIANA MINING COMPANY, INC.	OMRNPDES
1470 JULIANA MINING COMPANY, INC.	OMRNPDES
1471 BROOKS RUN COAL COMPANY	OMRNPDES
1472 JULIANA MINING COMPANY, INC.	OMRNPDES
1473 JULIANA MINING COMPANY, INC.	OMRNPDES
1474 JULIANA MINING COMPANY, INC.	OMRNPDES
1475 JULIANA MINING COMPANY, INC.	OMRNPDES
1476 JULIANA MINING COMPANY, INC.	OMRNPDES
1477 GRAFTON COAL COMPANY	OMRNPDES
1478 GRAFTON COAL COMPANY	OMRNPDES
1479 GRAFTON COAL COMPANY	OMRNPDES
1480 GRAFTON COAL COMPANY	OMRNPDES
1481 JULIANA MINING COMPANY, INC.	OMRNPDES
1482 JULIANA MINING COMPANY, INC.	OMRNPDES
1483 JULIANA MINING COMPANY, INC.	OMRNPDES
1484 JULIANA MINING COMPANY, INC.	OMRNPDES
1485 JULIANA MINING COMPANY, INC.	OMRNPDES
1486 JULIANA MINING COMPANY, INC.	OMRNPDES
1487 JULIANA MINING COMPANY, INC.	OMRNPDES
1488 GRAFTON COAL COMPANY	OMRNPDES
1489 JULIANA MINING COMPANY, INC.	OMRNPDES
1490 JULIANA MINING COMPANY, INC.	OMRNPDES
1491 JULIANA MINING COMPANY, INC.	OMRNPDES
1492 JULIANA MINING COMPANY, INC.	OMRNPDES
1493 JULIANA MINING COMPANY, INC.	OMRNPDES
1494 JULIANA MINING COMPANY, INC.	OMRNPDES
1495 JULIANA MINING COMPANY, INC.	OMRNPDES
1496 JULIANA MINING COMPANY, INC.	OMRNPDES
1497 JULIANA MINING COMPANY, INC.	OMRNPDES
1498 JULIANA MINING COMPANY, INC.	OMRNPDES
1499 GRAFTON COAL COMPANY	OMRNPDES
1500 JULIANA MINING COMPANY, INC.	OMRNPDES
1501 JULIANA MINING COMPANY, INC.	OMRNPDES
1502 PAMMLID COAL COMPANY	OMRNPDES
1503 JULIANA MINING COMPANY, INC.	OMRNPDES
1504 BROOKS RUN COAL COMPANY	OMRNPDES
1505 JULIANA MINING COMPANY, INC.	OMRNPDES
1506 D & K COAL COMPANY	OMRNPDES
1507 LACKEY COALS, INC.	OMRNPDES
1508 LACKEY COALS, INC.	OMRNPDES
1509 JULIANA MINING COMPANY, INC.	OMRNPDES
1510 JULIANA MINING COMPANY, INC.	OMRNPDES

1511 D & K COAL COMPANY	OMRNPDES
1512 BROOKS RUN COAL COMPANY	OMRNPDES
1513 JULIANA MINING COMPANY, INC.	OMRNPDES
1514 JULIANA MINING COMPANY, INC.	OMRNPDES
1515 TYGART COAL COMPANY	OMRNPDES
1516 JULIANA MINING COMPANY, INC.	OMRNPDES
1517 JULIANA MINING COMPANY, INC.	OMRNPDES
1518 BROOKS RUN COAL COMPANY	OMRNPDES
1519 JULIANA MINING COMPANY, INC.	OMRNPDES
1520 GRAFTON COAL COMPANY	OMRNPDES
1521 JULIANA MINING COMPANY, INC.	OMRNPDES
1522 JULIANA MINING COMPANY, INC.	OMRNPDES
1523 JULIANA MINING COMPANY, INC.	OMRNPDES
1524 JULIANA MINING COMPANY, INC.	OMRNPDES
1525 JULIANA MINING COMPANY, INC.	OMRNPDES
1526 JULIANA MINING COMPANY, INC.	OMRNPDES
1527 EASTERN LEASING & EQUIP. CO.	OMRNPDES
1528 JULIANA MINING COMPANY, INC.	OMRNPDES
1529 JULIANA MINING COMPANY, INC.	OMRNPDES
1530 BROOKS RUN COAL COMPANY	OMRNPDES
1531 JULIANA MINING COMPANY, INC.	OMRNPDES
1532 JULIANA MINING COMPANY, INC.	OMRNPDES
1533 JULIANA MINING COMPANY, INC.	OMRNPDES
1534 JULIANA MINING COMPANY, INC.	OMRNPDES
1535 GRAFTON COAL COMPANY	OMRNPDES
1536 GRAFTON COAL COMPANY	OMRNPDES
1537 EASTERN LEASING & EQUIP. CO.	OMRNPDES
1538 JULIANA MINING COMPANY, INC.	OMRNPDES
1539 JULIANA MINING COMPANY, INC.	OMRNPDES
1540 BROOKS RUN COAL COMPANY	OMRNPDES
1541 JULIANA MINING COMPANY, INC.	OMRNPDES
1542 JULIANA MINING COMPANY, INC.	OMRNPDES
1543 BROOKS RUN COAL CO	OMRNPDES
1544 BROOKS RUN COAL CO	OMRNPDES
1545 BROOKS RUN COAL CO	OMRNPDES
1546 JULIANA MINING COMPANY, INC.	OMRNPDES
1547 GRAFTON COAL COMPANY	OMRNPDES
1548 EASTERN LEASING & EQUIP. CO.	OMRNPDES
1549 EASTERN LEASING & EQUIP. CO.	OMRNPDES
1550 JULIANA MINING COMPANY, INC.	OMRNPDES
1551 JULIANA MINING COMPANY, INC.	OMRNPDES
1552 JULIANA MINING COMPANY, INC.	OMRNPDES
1553 BROOKS RUN COAL COMPANY	OMRNPDES
1554 BROOKS RUN COAL CO	OMRNPDES
1555 COAL CORPORATION OF AMERICA	OMRNPDES
1556 COAL CORPORATION OF AMERICA	OMRNPDES
1557 GRAFTON COAL COMPANY	OMRNPDES
1558 EASTERN LEASING & EQUIP. CO.	OMRNPDES
1559 COAL CORPORATION OF AMERICA	OMRNPDES
1560 JULIANA MINING COMPANY, INC.	OMRNPDES
1561 JULIANA MINING COMPANY, INC.	OMRNPDES
1562 JULIANA MINING COMPANY, INC.	OMRNPDES
1563 JULIANA MINING COMPANY, INC.	OMRNPDES
1564 BROOKS RUN COAL CO	OMRNPDES

1565 COAL CORPORATION OF AMERICA	OMRNPDES
1566 GRAFTON COAL COMPANY	OMRNPDES
1567 GRAFTON COAL COMPANY	OMRNPDES
1568 ELK RIVER SEWELL COAL COMPANY	OMRNPDES
1569 ELK RIVER SEWELL COAL COMPANY	OMRNPDES
1570 T & R COAL COMPANY	OMRNPDES
1571 JULIANA MINING COMPANY, INC.	OMRNPDES
1572 JULIANA MINING COMPANY, INC.	OMRNPDES
1573 ELK RIVER SEWELL COAL COMPANY	OMRNPDES
1574 ELK RIVER SEWELL COAL COMPANY	OMRNPDES
1575 ELK RIVER SEWELL COAL COMPANY	OMRNPDES
1576 ELK RIVER SEWELL COAL COMPANY	OMRNPDES
1577 JULIANA MINING COMPANY, INC.	OMRNPDES
1578 ELK RIVER SEWELL COAL COMPANY	OMRNPDES
1579 GRAFTON COAL COMPANY	OMRNPDES
1580 GRAFTON COAL COMPANY	OMRNPDES
1581 JULIANA MINING COMPANY, INC.	OMRNPDES
1582 GRAFTON COAL COMPANY	OMRNPDES
1583 BROOKS RUN COAL COMPANY	OMRNPDES
1584 BROOKS RUN COAL COMPANY	OMRNPDES
1585 JULIANA MINING COMPANY, INC.	OMRNPDES
1586 LEXIE COAL COMPANY	OMRNPDES
1587 COAL CORPORATION OF AMERICA	OMRNPDES
1588 COAL CORPORATION OF AMERICA	OMRNPDES
1589 GRAFTON COAL COMPANY	OMRNPDES
1590 LEXIE COAL COMPANY	OMRNPDES
1591 LEXIE COAL COMPANY	OMRNPDES
1592 GRAFTON COAL COMPANY	OMRNPDES
1593 PHOENIX RESOURCES, INC.	OMRNPDES
1594 GRAFTON COAL COMPANY	OMRNPDES
1595 BROOKS RUN COAL COMPANY	OMRNPDES
1596 COAL CORPORATION OF AMERICA	OMRNPDES
1597 JULIANA MINING COMPANY, INC.	OMRNPDES
1598 BROOKS RUN COAL CO	OMRNPDES
1599 GRAFTON COAL COMPANY	OMRNPDES
1600 JULIANA MINING COMPANY, INC.	OMRNPDES
1601 ELK RIVER SEWELL COAL COMPANY	OMRNPDES
1602 COAL CORPORATION OF AMERICA	OMRNPDES
1603 GRAFTON COAL COMPANY	OMRNPDES
1604 JULIANA MINING COMPANY, INC.	OMRNPDES
1605 COAL CORPORATION OF AMERICA	OMRNPDES
1606 GRAFTON COAL COMPANY	OMRNPDES
1607 JULIANA MINING COMPANY, INC.	OMRNPDES
1608 JULIANA MINING COMPANY, INC.	OMRNPDES
1609 JULIANA MINING COMPANY, INC.	OMRNPDES
1610 COAL CORPORATION OF AMERICA	OMRNPDES
1611 GRAFTON COAL COMPANY	OMRNPDES
1612 JULIANA MINING COMPANY, INC.	OMRNPDES
1613 JULIANA MINING COMPANY, INC.	OMRNPDES
1614 BROOKS RUN COAL CO	OMRNPDES
1615 GRAFTON COAL COMPANY	OMRNPDES
1616 JULIANA MINING COMPANY, INC.	OMRNPDES
1617 PHOENIX RESOURCES, INC.	OMRNPDES
1618 GRAFTON COAL COMPANY	OMRNPDES

1619 JULIANA MINING COMPANY, INC.	OMRNPDES
1620 PHOENIX RESOURCES, INC.	OMRNPDES
1621 PHOENIX RESOURCES, INC.	OMRNPDES
1622 GRAFTON COAL COMPANY	OMRNPDES
1623 SGP PROCESSING, INC.	OMRNPDES
1624 COAL CORPORATION OF AMERICA	OMRNPDES
1625 JULIANA MINING COMPANY, INC.	OMRNPDES
1626 JULIANA MINING COMPANY, INC.	OMRNPDES
1627 JULIANA MINING COMPANY, INC.	OMRNPDES
1628 JULIANA MINING COMPANY, INC.	OMRNPDES
1629 JULIANA MINING COMPANY, INC.	OMRNPDES
1630 BROOKS RUN COAL COMPANY	OMRNPDES
1631 JULIANA MINING COMPANY, INC.	OMRNPDES
1632 PHOENIX RESOURCES, INC.	OMRNPDES
1633 JULIANA MINING COMPANY, INC.	OMRNPDES
1634 PHOENIX RESOURCES, INC.	OMRNPDES
1635 BROOKS RUN COAL CO	OMRNPDES
1636 PHOENIX RESOURCES, INC.	OMRNPDES
1637 PHOENIX RESOURCES, INC.	OMRNPDES
1638 COAL CORPORATION OF AMERICA	OMRNPDES
1639 BROOKS RUN COAL COMPANY	OMRNPDES
1640 BRIGHT COAL CORPORATION	OMRNPDES
1641 JULIANA MINING COMPANY, INC.	OMRNPDES
1642 COAL CORPORATION OF AMERICA	OMRNPDES
1643 JULIANA MINING COMPANY, INC.	OMRNPDES
1644 PHOENIX RESOURCES, INC.	OMRNPDES
1645 BROOKS RUN COAL COMPANY	OMRNPDES
1646 BROOKS RUN COAL CO	OMRNPDES
1647 JULIANA MINING COMPANY, INC.	OMRNPDES
1648 PHOENIX RESOURCES, INC.	OMRNPDES
1649 PHOENIX RESOURCES, INC.	OMRNPDES
1650 PHOENIX RESOURCES, INC.	OMRNPDES
1651 COAL CORPORATION OF AMERICA	OMRNPDES
1652 PHOENIX RESOURCES, INC.	OMRNPDES
1653 JULIANA MINING COMPANY, INC.	OMRNPDES
1654 BROOKS RUN COAL CO	OMRNPDES
1655 BROOKS RUN COAL COMPANY	OMRNPDES
1656 MARSON COAL COMPANY	OMRNPDES
1657 PHOENIX RESOURCES, INC.	OMRNPDES
1658 PHOENIX RESOURCES, INC.	OMRNPDES
1659 COAL CORPORATION OF AMERICA	OMRNPDES
1660 BROOKS RUN COAL COMPANY	OMRNPDES
1661 BROOKS RUN COAL CO	OMRNPDES
1662 BROOKS RUN COAL CO	OMRNPDES
1663 PHOENIX RESOURCES, INC.	OMRNPDES
1664 PHOENIX RESOURCES, INC.	OMRNPDES
1665 BROOKS RUN COAL COMPANY	OMRNPDES
1666 PHOENIX RESOURCES, INC.	OMRNPDES
1667 BROOKS RUN COAL CO	OMRNPDES
1668 PHOENIX RESOURCES, INC.	OMRNPDES
1669 BROOKS RUN COAL COMPANY	OMRNPDES
1670 BROOKS RUN COAL COMPANY	OMRNPDES
1671 PHOENIX RESOURCES, INC.	OMRNPDES
1672 BROOKS RUN COAL CO	OMRNPDES

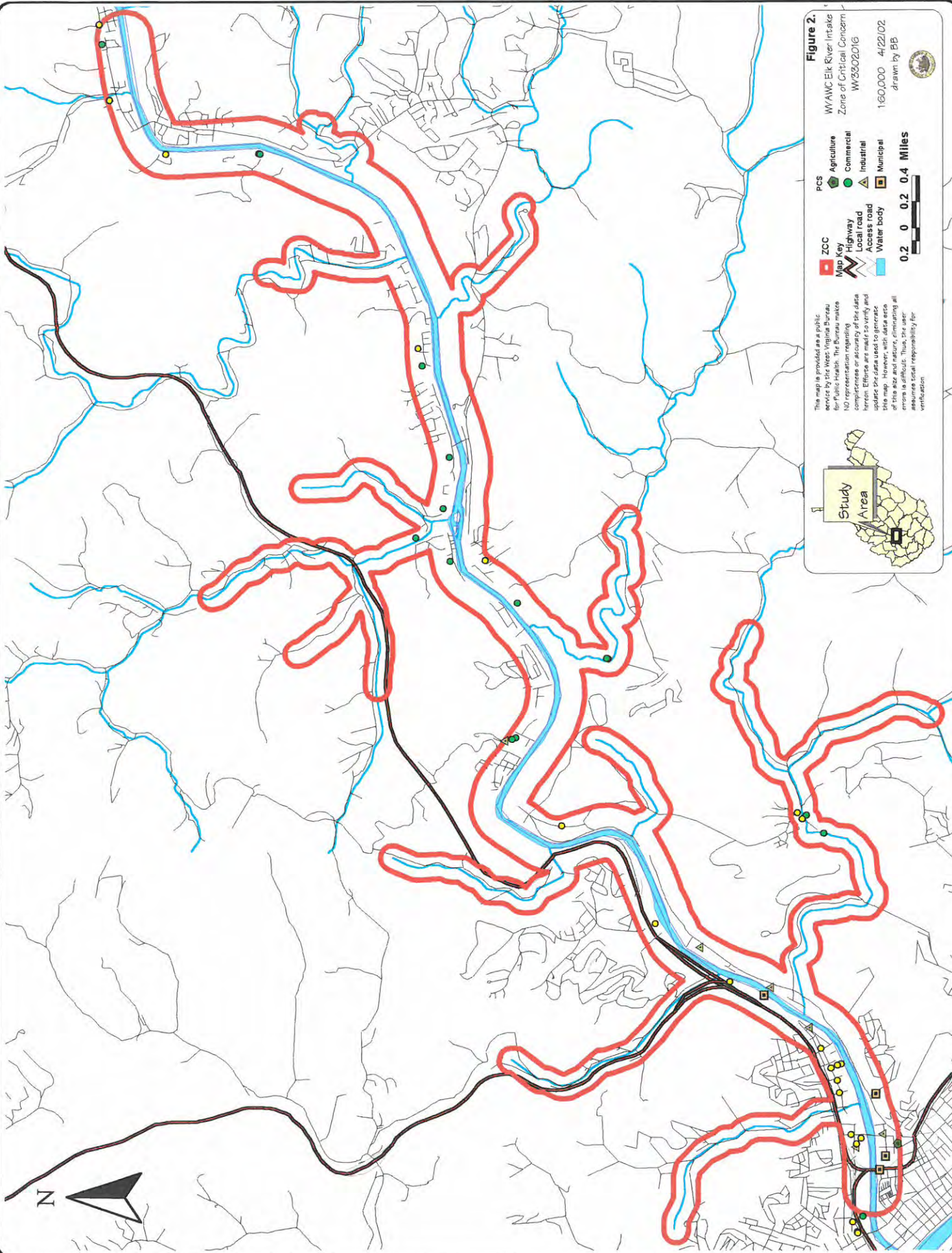
1673 PHOENIX RESOURCES, INC.	OMRNPDES
1674 BROOKS RUN COAL COMPANY	OMRNPDES
1675 PHOENIX RESOURCES, INC.	OMRNPDES
1676 PHOENIX RESOURCES, INC.	OMRNPDES
1677 BROOKS RUN COAL COMPANY	OMRNPDES
1678 PHOENIX RESOURCES, INC.	OMRNPDES
1679 BROOKS RUN COAL COMPANY	OMRNPDES
1680 JULIANA MINING COMPANY, INC.	OMRNPDES
1681 BROOKS RUN COAL CO	OMRNPDES
1682 PHOENIX RESOURCES, INC.	OMRNPDES
1683 BROOKS RUN COAL CO	OMRNPDES
1684 PHOENIX RESOURCES, INC.	OMRNPDES
1685 PHOENIX RESOURCES, INC.	OMRNPDES
1686 BROOKS RUN COAL COMPANY	OMRNPDES
1687 PHOENIX RESOURCES, INC.	OMRNPDES
1688 PHOENIX RESOURCES, INC.	OMRNPDES
1689 BROOKS RUN COAL CO	OMRNPDES
1690 BRIGHT COAL CORPORATION	OMRNPDES
1691 BRIGHT COAL CORPORATION	OMRNPDES
1692 BRIGHT COAL CORPORATION	OMRNPDES
1693 PHOENIX RESOURCES, INC.	OMRNPDES
1694 BROOKS RUN COAL COMPANY	OMRNPDES
1695 BROOKS RUN COAL COMPANY	OMRNPDES
1696 PHOENIX RESOURCES, INC.	OMRNPDES
1697 PHOENIX RESOURCES, INC.	OMRNPDES
1698 BROOKS RUN COAL COMPANY	OMRNPDES
1699 PHOENIX RESOURCES, INC.	OMRNPDES
1700 PHOENIX RESOURCES, INC.	OMRNPDES
1701 PHOENIX RESOURCES, INC.	OMRNPDES
1702 PHOENIX RESOURCES, INC.	OMRNPDES
1703 BROOKS RUN COAL CO	OMRNPDES
1704 PHOENIX RESOURCES, INC.	OMRNPDES
1705 PHOENIX RESOURCES, INC.	OMRNPDES
1706 PHOENIX RESOURCES, INC.	OMRNPDES
1707 BROOKS RUN COAL COMPANY	OMRNPDES
1708 BROOKS RUN COAL COMPANY	OMRNPDES
1709 PHOENIX RESOURCES, INC.	OMRNPDES
1710 PHOENIX RESOURCES, INC.	OMRNPDES
1711 PHOENIX RESOURCES, INC.	OMRNPDES
1712 PHOENIX RESOURCES, INC.	OMRNPDES
1713 BROOKS RUN COAL COMPANY	OMRNPDES
1714 PHOENIX RESOURCES, INC.	OMRNPDES
1715 PHOENIX RESOURCES, INC.	OMRNPDES
1716 PHOENIX RESOURCES, INC.	OMRNPDES
1717 BROOKS RUN COAL COMPANY	OMRNPDES
1718 PHOENIX RESOURCES, INC.	OMRNPDES
1719 BROOKS RUN COAL COMPANY	OMRNPDES
1720 BROOKS RUN COAL COMPANY	OMRNPDES
1721 PHOENIX RESOURCES, INC.	OMRNPDES
1722 PHOENIX RESOURCES, INC.	OMRNPDES
1723 PHOENIX RESOURCES, INC.	OMRNPDES
1724 PHOENIX RESOURCES, INC.	OMRNPDES
1725 BROOKS RUN COAL COMPANY	OMRNPDES
1726 PHOENIX RESOURCES, INC.	OMRNPDES

1727 BROOKS RUN COAL COMPANY	OMRNPDES
1728 BROOKS RUN COAL COMPANY	OMRNPDES
1729 PHOENIX RESOURCES, INC.	OMRNPDES
1730 PHOENIX RESOURCES, INC.	OMRNPDES
1731 BROOKS RUN COAL COMPANY	OMRNPDES
1732 PHOENIX RESOURCES, INC.	OMRNPDES
1733 MARSON COAL COMPANY	OMRNPDES
1734 PHOENIX RESOURCES, INC.	OMRNPDES
1735 PHOENIX RESOURCES, INC.	OMRNPDES
1736 PHOENIX RESOURCES, INC.	OMRNPDES
1737 BROOKS RUN COAL COMPANY	OMRNPDES
1738 PHOENIX RESOURCES, INC.	OMRNPDES
1739 PHOENIX RESOURCES, INC.	OMRNPDES
1740 PHOENIX RESOURCES, INC.	OMRNPDES
1741 PHOENIX RESOURCES, INC.	OMRNPDES
1742 PHOENIX RESOURCES, INC.	OMRNPDES
1743 PHOENIX RESOURCES, INC.	OMRNPDES
1744 PHOENIX RESOURCES, INC.	OMRNPDES
1745 PHOENIX RESOURCES, INC.	OMRNPDES
1746 PHOENIX RESOURCES, INC.	OMRNPDES
1747 PHOENIX RESOURCES, INC.	OMRNPDES
1748 PHOENIX RESOURCES, INC.	OMRNPDES
1749 PHOENIX RESOURCES, INC.	OMRNPDES
1750 PHOENIX RESOURCES, INC.	OMRNPDES
1751 MARSON COAL COMPANY, INC.	OMRNPDES
1752 PHOENIX RESOURCES, INC.	OMRNPDES
1753 PHOENIX RESOURCES, INC.	OMRNPDES
1754 PHOENIX RESOURCES, INC.	OMRNPDES
1755 PHOENIX RESOURCES, INC.	OMRNPDES
1756 PHOENIX RESOURCES, INC.	OMRNPDES
1757 JULIANA MINING COMPANY, INC.	OMRNPDES
1758 BROOKS RUN COAL COMPANY	OMRNPDES
1759 JULIANA MINING COMPANY, INC.	OMRNPDES
1760 JULIANA MINING COMPANY, INC.	OMRNPDES
1761 BRIGHT COAL CORPORATION	OMRNPDES
1762 CRAVAT COAL COMPANY	OMRNPDES
1763 CRAVAT COAL COMPANY	OMRNPDES
1764 BRIGHT COAL CORPORATION	OMRNPDES
1765 PHOENIX RESOURCES, INC.	OMRNPDES
1766 BRIGHT COAL CORPORATION	OMRNPDES
1767 BROOKS RUN COAL COMPANY	OMRNPDES
1768 BROOKS RUN COAL COMPANY	OMRNPDES
1769 JULIANA MINING COMPANY, INC.	OMRNPDES
1770 JULIANA MINING COMPANY, INC.	OMRNPDES
1771 BROOKS RUN COAL COMPANY	OMRNPDES
1772 TOY COAL COMPANY	OMRNPDES
1773 JULIANA MINING COMPANY, INC.	OMRNPDES
1774 JULIANA MINING COMPANY, INC.	OMRNPDES
1775 CRAVAT COAL COMPANY	OMRNPDES
1776 JULIANA MINING COMPANY, INC.	OMRNPDES
1777 CRAVAT COAL COMPANY	OMRNPDES
1778 CRAVAT COAL COMPANY	OMRNPDES
1779 BROOKS RUN COAL COMPANY	OMRNPDES
1780 BROOKS RUN COAL COMPANY	OMRNPDES

1835 KODIAK LAND COMPANY, INC.	OMRNPDES
1836 KODIAK LAND COMPANY, INC.	OMRNPDES
1837 KODIAK LAND COMPANY, INC.	OMRNPDES
1838 KODIAK LAND COMPANY, INC.	OMRNPDES
1839 COUNTRY CHEF INC	OWRNPDES
1840 SUTTON LAKE/BELOW DAM	OWRNPDES
1841 CAMPING AREA AT MILL CREEK	OWRNPDES
1842 BAKER'S RUN/SUTTON LAKE	OWRNPDES
1843 BEE RUN	OWRNPDES
1844 SUTTON LAKE/MID. KAN	OWRNPDES
1845 BURNSVILLE LAKE/BULLTOWN	OWRNPDES
1846 PETROLEUM RESOURCES INC	OWRNPDES
1847 MAYSEL MANON/ANDERSON HGTS	OWRNPDES
1848 ELK ESTATES	OWRNPDES
1849 SANDY BRAE GOLF COURSE	OWRNPDES
1850 COONSKIN PARK	OWRNPDES
1851 ELK RIVER FOODLAND	OWRNPDES
1852 OVERLOOK CONDOMINIUMS	OWRNPDES
1853 ALPINE BROOK MHP	OWRNPDES
1854 SIZEMORE MOBILE HOME PARK	OWRNPDES
1855 BIG CHIMNEY MHP	OWRNPDES
1856 STORE NO 86 BIG OTTER	OWRNPDES
1857 SERVIA RD. HIGHWAY REST AREA	OWRNPDES
1858 COON KNOB MAINTENANCE HDQRTRS	OWRNPDES
1859 GREEN ACRES DEVELOPMENT	OWRNPDES
1860 SNOWSHOE	OWRNPDES
1861 EVERGREEN ESTATES	OWRNPDES
1862 THE SKI BARN	OWRNPDES
1863 COBB RENTAL SUBDIVISION	OWRNPDES
1864 THE SADDLERACK PROPERTY	OWRNPDES
1865 GEARY SCHOOL	OWRNPDES
1866 YEAGER AIRPORT	OWRNPDES
1867 RICK'S USED AUTO PARTS	OWRNPDES
1868 GASSAWAY CONCRETE CO INC	OWRNPDES
1869 ROSEWOOD LUMBER CO INC	OWRNPDES
1870 PIERSON LUMBER CO	OWRNPDES
1871 WAYBRIGHTS SALVAGE	OWRNPDES
1872 BECKWITH LUMBER CO INC	OWRNPDES
1873 PIERSON LUMBER CO	OWRNPDES
1874 THE JIM C HAMER CO	OWRNPDES
1875 MELCO LUMBER CO INC	OWRNPDES
1876 MOUNTAIN AUTO SUPPLY #2	OWRNPDES
1877 HACKER VALLEY FACILITY	OWRNPDES
1878 TIOGA AUTO PARTS SITE #1	OWRNPDES
1879 COMPANY CORPORATION	OWRNPDES
1880 KENTON MEADOWS CO, INC	OWRNPDES
1881 MARTIN MARIETTA MATERIALS, INC.	OWRNPDES
1882 MARTIN MARIETTA MATERIALS, INC.	OWRNPDES
1883 GASSAWAY, WV	OWRNPDES
1884 PERRINE TIMBER PRODUCTS CO INC	OWRNPDES
1885 RENEWABLE ENERGIES INC	OWRNPDES
1886 FRAMETOWN WV	OWRNPDES
1887 KENTON MEADOWS CO, INC	OWRNPDES
1888 PLETCHER PONTIAC CO	OWRNPDES

1889 DONS DISPOSAL SERVICE INC	OWRNPDES
1890 HUNTINGTON #59	OWRNPDES
1891 WEIKLE BROTHERS LUMBER CO	OWRNPDES
1892 ELK RIVER RAILROAD INC	OWRNPDES
1893 DJ SPLIT RAIL FENCE COMPANY	OWRNPDES
1894 PLANT 36	OWRNPDES
1895 AMRON BLDG COMPONENTS INC	OWRNPDES
1896 SCHOONOVERS GARAGE	OWRNPDES
1897 1998 1999 MEP COCO DRILL PROJ	OWRNPDES
1898 COBB EXTRACTION PLANT	OWRNPDES
1899 COCO COMPRESSOR STATION	OWRNPDES
1900 001-UPPER, 002-LOWER	OWRNPDES
1901 SNOWSHOE COMPANY	OWRNPDES
1902 SUGAR CREEK PSD	OWRNPDES
1903 ETOWAH TERMINAL	OWRNPDES
1904 FRAMETOWN ELEMENTARY SCHOOL	OWRNPDES
1905 WEBSTER SPRINGS PSD	OWRNPDES
1906 FLATWOODS-CANOE RUN PSD	OWRNPDES
1907 AVIS RENT A CAR	OWRNPDES
1908 APPALACHIAN TIMBER SERVICES	OWRNPDES
1909 GOULD'S ELECTRIC MOTOR REPAIR	OWRNPDES
1910 BRAXTON CNTY MAIN. HQTRS	OWRNPDES
1911 MUNICIPAL WATER WORKS	OWRNPDES
1912 HOLLY RIVER STATE PARK	OWRNPDES
1913 CDL HARDWOODS INC	OWRNPDES
1914 ELK PINCH PSD	OWRNPDES
1915 FLATWOODS-CANOE RUN PSD	OWRNPDES
1916 BIG SANDY PSD	OWRNPDES
1917 AREA SCHOOLS	OWRNPDES
1918 TIM TANNER DEVELOPMENT	OWRNPDES
1919 BIRCH RIVER GO MART FOOD STORE	OWRNPDES
1920 HOLLY RIVER STATE PARK	OWRNPDES
1921 SANITARY LANDFILL	OWRNPDES
1922 PLASTIC COATINGS CORP	OWRNPDES
1923 NORTHGATE (GREENBRIER ST)	OWRNPDES
1924 WASHINGTON HGTS-RIVER SITE	OWRNPDES
1925 ROCKY TOP RIVER RETREATS	OWRNPDES
1926 FLATWOODS-CANOE RUN PSD	OWRNPDES
1927 FILL EQUIPMENT YARD	OWRNPDES
1928 SKIDMORE-WOODARD FARM DEV	OWRNPDES
1929 INDIAN CREEK VILLAGE	OWRNPDES
1930 ARM & HAMMER ROAD SITE PROJECT	OWRNPDES
1931 WATERLINE PROJECT	OWRNPDES
1932 ELK RIVER SEWELL	OWRNPDES
1933 PHOENIX RESOURCES INC	OWRNPDES
1934 SUMMERSVILLE FIVE BLOCK COAL	OWRNPDES
1935 EASTERN ENERGY INVESTMENTS INC	OWRNPDES
1936 LOGAN COAL & EXPORT CORP	OWRNPDES
1937 KMADER ENTERPRISES CORP	OWRNPDES
1938 "THE LEGEND" GOLF COURSE	OWRNPDES
1939 PHOENIX RESOURCES INC	OWRNPDES
1940 ELK RIVER SEWELL COAL CO	OWRNPDES
1941 ORCHARD ACRES SUBDIVISION	OWRNPDES
1942 AARONS FORK WATER EXT CON I&II	OWRNPDES

1943 SNOWSHOE RESORT-CAMP 4 PHASE I	OWRNPDES
1944 YEAGER AIRPORT - RUNWAY 23	OWRNPDES
1945 TEE MILLER GOLF COURSE	OWRNPDES
1946 CLAY CNTY PARK	OWRNPDES
1947 THOMPSON PROPERTY	OWRNPDES
1948 RIDGEMONT SUBDIVISION	OWRNPDES
1949 PHEASANT RUN REFUSE PILE	OWRNPDES
1950 J A WENDLING	OWRNPDES
1951 RT 19 PROJECT	OWRNPDES
1952 MARKET EXPANSION PRO COCO C	OWRNPDES
1953 ALLEN'S SCRAP SERVICE INC	OWRNPDES
1954 SNOWSHOE WASTEWATER TANK	OWRNPDES
1955 PEPPER'S PINCH SITE	OWRNPDES
1956 MEADOWBROOK SOCCER FACILITY	OWRNPDES
1957 BUFFALO CK. BRIDGE	OWRNPDES
1958 MORRIS LAND DEVELOPMENT	OWRNPDES
1959 JOHN SKIDMORE DEVELOPEMNT	OWRNPDES
1960 SUMMERSVILLE FIVE BLOCK CORP.	OWRNPDES
1961 HEMMINGWAY PLACE TOWNHOUSES	OWRNPDES
1962 BRIERWOOD ESTATES SUBDIVISION	OWRNPDES
1963 CLENDENIN-FLATWOOD 138 KV PROJ	OWRNPDES
1964 Rt. 119 N Blue Ck Rd	OWRNPDES
1965 SHILOH FELLOWSHIP	OWRNPDES
1966 Doctors Ck Rd/ Frame Rd Water Main Extensions	OWRNPDES
1967 Wills Creek/Jordan Creek Water Main Extension	OWRNPDES
1968 Phoenix Resources, Permit S000462 - DEP10357	OWRNPDES
1969 Joshua and Katie Koon	OWRNPDES
1970 Newhouse Dr/Edens Fk/Copen Br/Fourmile Fk.	OWRNPDES
1971 Line SM-1027	OWRNPDES
1972 Line S Project	OWRNPDES
1973 Childrens Emergency Shelter - Nicholas County	OWRNPDES
1974 James Tanner	OWRNPDES
1975 Soccer Field Complex (Coonskin)	OWRNPDES
1976 John E. Johnson	OWRNPDES
1977 Randall Lee VanBibber	OWRNPDES
1978 Lower Gassaway Truss Bridge	OWRNPDES
1979 EDDIES SALVAGE	OWRNPDES
1980 WHITE CHEVROLET CO	RCRIS
1981 PENNZOIL CO ETOWAH TERM	RCRIS
1982 APPALCIAN MINING	RCRIS
1983 SUPERIOR WINDOWS	RCRIS
1984 DRAVO CORP CHARLESTON PLANT	RCRIS
1985 CHESAPEAKE & POTOMAC TELEPHONE CO	RCRIS
1986 AT & T LONG LINES-EQUIP ENGR WEBSTER SP	RCRIS
1987 CONSOLIDATED GAS TRANSMISSION CORP	RCRIS
1988 ELK RIVER SERVICE CENTER	RCRIS
1989 STRIPPER THE	RCRIS
1990 TERRY BODY SHOP	RCRIS
1991 WV ARMORY BOARD OMS#1	RCRIS
1992 TEDDYS BODY SHOP	RCRIS
1993 TCO-CLENDENIN COMPRESSOR STA	RCRIS
1994 COLUMBIA GAS TRANS-MARTIN YARD	RCRIS
1995 DONS DISPOSAL SERVICE INC	RCRIS
1996 FEDERAL EXPRESS CORP	RCRIS



This map is provided as a public service by the West Virginia Bureau for Public Health. The Bureau makes NO representation regarding completeness or accuracy of the data herein. Errors are made so verify and correct. Users are responsible for the accuracy of the data and the use of this map. The Bureau assumes no liability for errors in this map. Thus, the user assumes total responsibility for verification.

Figure 2.
WAWC Elk River Intake
Zone of Critical Concern
WV3302016
160,000 4/22/02
drawn by BB

PCS
Agriculture
Commercial
Industrial
Municipal

ZCC
Highway
Local road
Access road
Water body

Map Key

0.2 0 0.2 0.4 Miles