

State of West Virginia
Source Water Assessment and Protection Program
Source Water Assessment Report

Revised Report

Potomac Farms Water Company

PWSID WV3301947

Jefferson County



Prepared by:

West Virginia Department of Health and Human Resources
Bureau for Public Health
Office of Environmental Health Services
Source Water Protection Unit

April 26, 2013

TABLE OF CONTENTS

Introduction	3
What is the Purpose of this Revised Report?.....	3
Table 1 Public Water Supply Information	3
What is my Well's Source Water Protection Area?	4
What is SWAP?	4
What is Susceptibility?	4
How Was my Well's Susceptibility Determined?.....	4
Table 2 Source of Your Drinking Water - Hydrogeologic Setting	5
Table 3 Physical Integrity of Well	5
Table 4 Water Quality and Water Treatment Information.....	5
Evaluation of Significant Potential Sources of Contamination.....	6
Potential Contaminant Source Inventory	6
Historic Land Use and Land Use Changes	7
Regional Water Supply and Sewage Treatment	7
Overview of Leaking Underground Storage Tanks (LUST), TRI, and RCRA Occurrences.....	7
Table 5 Potential Contaminant Sources	8
Table 6 Regulated Sources.....	9
Next Step:.....	11
Contingency Planning.....	11
Alternative Sources.....	11
Management Planning	11
Need additional information?	12
Figure 1: Potomac Farms Water Company Location Map	12
Figure 2: Potomac Farms Water Company Source Water Protection Area with PCS Locations (Topographic Map Background)	13
Figure 3 Potomac Farms Water Company Source Water Protection Area with PCS Locations (2011 Aerial Photo Background)	14
Figure 4 Potomac Farms Water Company Aerial Photographs (1988).....	15
Figure 5 Potomac Farms Water Company Geologic Map	16
Appendix A EPA Regulated Sites.....	17
Glossary of Terms	19

GROUND WATER PUBLIC SUPPLY SYSTEMS

SOURCE WATER ASSESSMENT AND PROTECTION (SWAP) PROGRAM

REPORT

Prepared by: West Virginia Department of Health and Human Resources (WVDHHR), SWAP Program

INTRODUCTION

What is the Purpose of this Revised Report?

A Source Water Assessment Report was previously prepared for Potomac Farms Water Company by West Virginia Department of Health and Human Resources, Bureau for Public Health, Office of Environmental Health Services, Source Water Protection Unit in November 2003. Potomac Farms Water Company is located approximately 0.5 miles southwest of Bakerton, Jefferson County, West Virginia along County Route 30/6 (See Figure 1).

A source location and activity status verification and updated Potential Contaminant Source (PCS) survey was conducted by WVDHHR personnel on April 2, 2013. This revised assessment report is based on this recently updated information. The original delineation, established by WVDHHR, comprised an area of 288 acres (2,000 foot radius). This revised report expands this original protection area to include 503 acres (2,640 foot radius).

This concept of source water protection is a preventative approach and complements the effort of proper treatment and disinfection by the individual water supply systems. This assessment is one step in a multilevel approach to ensure a safe future supply of water by understanding what potential threats exist.

This Source Water Assessment Public Summary is to provide information to support local and state efforts to protect public drinking water source and to maintain a safe and dependable water supply for the protection of human health by preventing contamination. The costs of these preventative measures will rarely exceed the cost of remediating a public water supply once it is contaminated.

The emphasis of this assessment is on “source” water rather than the “tap” water. Information on tap water quality is available in the Consumer Confidence Report, which can be obtained from your local water supplier.

This report identifies the significant potential contaminant sources that could threaten source(s) water quality. Your susceptibility ranking does not imply poor water quality. Actual water quality is best reflected by results of regular water tests. Please refer to Table 1 for an informational summary of your public water supply.

Table 1 Public Water Supply Information

PWS Name	Potomac Farms Water Company
Address	432 Carter Avenue
City, State, Zip	Harpers Ferry, West Virginia 25425
PWSID#	WV3301947
County	Jefferson County
System Type	Community

What is my Well's Source Water Protection Area?

A well(s) source water protection area (SWPA) is the land around the well where protection activities should be focused. The SWPA is the area that is likely contributing water to the well. Please refer to Figure 2 for your SWPA.

What is SWAP?

The SWAP, established under the Safe Drinking Water Act, requires every state to:

- Delineate the area from which a public water supply system receives its water;
- Inventory land uses within the recharge areas of all public water supplies;
- Assess the susceptibility of drinking water sources to contamination from these land uses;
- Publicize the results to provide support for improved protection of sources.

The WVDHHR SWAP will complete all of these components of a source water assessment.

What is Susceptibility?

Susceptibility is a measure of your well field's potential to become contaminated by land uses and activities within the SWPA. The purpose of a susceptibility analysis is to provide an overview to actions a public water system may take to further reduce the susceptibility to their drinking water supply. Because public water supply wells have been constructed in various hydrologic settings and have a range of potentially significant contaminant sources, best professional judgment has been used in determining the susceptibility of each public water system to contamination. The possibility of a release from potential contaminant sources is greatly reduced if Best Management Practices (BMP's) are used. The susceptibility determination for your well did not take into account whether BMP's are being used.

Susceptibility of drinking water does not mean a customer will drink contaminated water. Water suppliers protect drinking water by monitoring and treating water supplies, and using BMP's and source water protection measures to ensure that safe water is delivered to the tap.

How Was my Well's Susceptibility Determined?

Your well field's susceptibility is based on the following parameters:

- Review of the hydrologic setting (ease of contamination transport through each materials present in the local hydrologic setting);
- Review of the physical integrity of the well(s);
- Review of available ground water quality data;
- Characterization of the potential significant contaminant sources identified in the SWPA;
- Integration of this information to identify the greatest threats to the source water and suggestions of appropriate protection strategies or activities.

Table 2 Source of Your Drinking Water - Hydrogeologic Setting

Well Name	Geologic Setting/Sensitivity
Well 1 – WL001	Karst/ High Sensitivity
Well 2 – WL002 (inactive)	Valley and Ridge (fracture)/ Moderate Sensitivity

The Potomac Farms Water Company water system serves a population of approximately 68 people. The supply is from a single active source well (Well 1). There is one inactive well (Well 2) present at the facility. Total raw water production is approximately 5,400 GPD. The source wells are located in a Karst area and the Valley and Ridge Province of West Virginia.

Karst areas consist of underlying karstified limestone or dolostone with subterranean drainage. The Valley and Ridge Province consists of complex faulted blocks that contain either localized-confined or localized unconfined aquifers, or lack of aquifers. The aquifers may be porous media or fractured rock. The source well(s) is located along the west limb of the Blue Ridge—South Mountain Anticlinorium. Rock units within the SWPA include those of the Elbrook, Waynesboro, and Tomstown Formations (See Figure 5).

Limestone, present within the protection area, is subject to possible solution channel and sinkhole development. Surface waters can enter the ground water regime very quickly via direct injection through sinkholes or other fracture or solution openings. The type of flow in karst areas is described as being conduit flow and is delivered via strike oriented cave passages or along fault planes and fault passages. Three faults of unknown type, oriented perpendicular to the axis of structural features occur within the region.

The original delineation, established by WVDHHR comprised an area of 288 acres (2,000 foot radius) for each source well. This revised report expands the boundaries of the protection area to include 503 acres (2,640 foot radius) for each source well. This is generally based on water use for a five year period with consideration given to influencing hydrogeologic factors.

The estimated land area (approximately 503 acres) that may contribute water to each well is depicted in the attached map (Figure 2) as the Source Water Protection Area. However, source water and contaminant sources may originate from greater distances than encompassed by this interim delineation.

Table 3 Physical Integrity of Well

Well Name	Completion Date	Completion Report	Well/ Casing Depth (feet)	Grout	Source Integrity
Well 1 – WL001	1976	No	225/65	No	Unknown
Well 2 – WL002 (inactive)	Unknown	No	Unknown	Unknown	Unknown

Wells may vary in their construction characteristics and in the geologic rock types in which they occur. The lack of an effective grout and sanitary seals are avenues by which contaminants from nearby surface water bodies or overland runoff can percolate to wells.

Table 4 Water Quality and Water Treatment Information

Well Name	Results
Well 1 – WL001	Meets Standards
Well 2 – WL002 (inactive)	NA

The Ground Water Under the Direct Influence (GWUDI) assessment evaluates contaminants that may enter the water drawn directly from the well. Potomac Farms Water Company Well 1 was designated NOT GWUDI by letter dated October 18, 1999. No determination has been made for Well 2. If this well is placed into service, a separate GWUDI assessment will need to be completed. The contaminants addressed in this assessment include those regulated under the Safe Drinking Water Act as well as those the WVDHHR has determined may present a concern to public health. Periodic analysis for a variety of bacterial, organic, nitrate, synthetic and inorganic contaminants in the water after treatment may consistently yield values below the maximum contaminant level (MCL) as regulated by the Safe Drinking Water Act. Drinking water that meets MCL standards is associated with little or no health risk. Because sampling requirements are for treated water, the lack of water quality impacts does not necessarily indicate a lack of contamination. This determination is limited by the sampling that is performed for the water system.

All drinking water including bottled water may reasonably be expected to contain small amounts of some contaminants. The presence of contaminants does not necessarily indicate that water poses a health risk. For further information regarding the quality of the system's finished water, please refer to the Consumer Confidence Report or call the Environmental Protection Agency's Safe Drinking Water Hotline at 1-800-426-4791 or contact your local health provider for more information about contaminants and potential health effects.

EVALUATION OF SIGNIFICANT POTENTIAL SOURCES OF CONTAMINATION

Potential Contaminant Source Inventory

The inventory for Potomac Farms Water Company consists of approximately 20 significant Potential Contaminant Sources (PCS) of which 9 are considered higher threats to ground water. Please refer to Table 5 for a listing of identified PCSs and Figures 2 and 3 for their locations within the SWPA. Regulated facilities and activities are listed in Table 6 and located on Figures 2 and 3, if present within the SWPA.

Some PCSs that are located outside of the SWPA may be included for information purposes. Water supply wells and treatment plants are not identified on the map for security reasons. Some facilities are not located on the SWPA map as they occur over broad geographic areas (agricultural fields, highways, and railroad right-of-ways).

Each significant potential source of contamination has been analyzed and prioritized (low, moderate, and high, unless otherwise noted) relative to its potential to impact the water supply. It is important to note that the links between the PCS and the primary contaminant types are not intended to be comprehensive, but only those commonly associated with the PCS. Any potential source may have one or more types of contaminants associated with the chemicals indicated. Threat rankings are a combination of the perceived risk of the release of a contaminant from a land use area, the migration route of the contaminant to the well and the relative public health risk of the contaminant itself. The risk rankings are based on the general nature of their activities and the contaminants associated with them, not on facility specific information, such as management practices. This ranking does not take into consideration any unforeseen releases or the dynamics of new PCS's within the delineated SWPA.

A detailed risk assessment of PCS's was beyond the scope of what could be accomplished with available resources and data. A detailed risk analysis is more meaningful when prepared by local decision makers as the bridge from assessment work to protection strategies.

Historic Land Use and Land Use Changes

Historic land use within the SWPA has been primarily agricultural including orchards, various crops, hay production, dairy farms, and livestock grazing. Aerial photographs were examined to determine major changes in land use that have occurred during the last 20 years. There were no significant changes in land use other than a moderate level of residential development in the southeast quadrant of the SWPA.

Regional Water Supply and Sewage Treatment

Ground water is a primary source of drinking water supply to both private and public water systems within the SWPA. Both septic systems and package wastewater treatment plants are used within the SWPA for sewage treatment.

Overview of Leaking Underground Storage Tanks (LUST), TRI, and RCRA Occurrences

The available WVDEP LUST inventory lists one site in Bakerton outside but adjacent to the northeast boundary of the SWPA. A release was confirmed from this site on October 30, 2001 with remedial action completed on June 27, 2002.

Table 5 Potential Contaminant Sources

PCS No.	Map Code	PCS Description	PCS Category	Associated Chemicals	Threat to GW
1	A-7	Crops: other	Agriculture	NN, MP, SOC	L
2	A-12	Farm machinery areas	Agriculture	PH, VOC	L
3	R-4	Residential (single family homes)	Residential	VOC, SOC, NN	H
4	A-17	Other animal facilities (horse grazing)	Agriculture	MP	L
5	R-4	Residential (single family homes)	Residential	VOC, SOC, NN	H
6	R-4	Residential (single family homes)	Residential	VOC, SOC, NN	H
7	R-6	Septic Systems (leach field)	Residential	MP, VOC, SOC, TO, NN	M
8	C-9	Cemeteries	Commercial	M, SOC, PH	L
9	A-2	Animal Feedlots/Barn/Machinery	Agriculture	NN, MP, TO, PH, VOC	H
10	R-4	Residential (single family homes)	Residential	VOC, SOC, NN	H
11	R-4	Residential (single family homes)	Residential	VOC, SOC, NN	H
12	C-53	Other (septic tank)	Commercial	MP, VOC, SOC, TO, NN	M
13	C-23	Historic gas stations	Commercial	PH, M, VOC	H
14	M-6	Fire Stations	Municipal	PH, VOC	L
15	I-31	Quarry (inactive)	Industrial	M, T, PH, VOC	M
16	R-4	Residential (single family homes)	Residential	VOC, SOC, NN	H
17	A-7	Crops: other	Agriculture	NN, MP, SOC	L
18	A-12	Farm machinery areas	Agriculture	PH, VOC	L
19	A-2	Animal Feedlots	Agriculture	NN, MP, TO	H
	M-7	Highway (County Route 30)	Municipal	PH, VOC, M	M

Please note that the locations of springs/wells and water treatment plants are not displayed on figures due to security reasons.

Table 6 Regulated Sources

Regulated Facilities
None Identified

Index to Associated Chemicals is as follows:

MP	Microbiological Pathogens: Total/Fecal Coliform, Viruses, Protozoa
NN	Nitrate/Nitrite
VOC	Volatile Organic Compounds
HM	Heavy Metals
M	Metals
SOC	Synthetic Organic Compounds

T	Turbidity
TO	Taste and Odor precursors
R	Radionuclides
PH	Petroleum Hydrocarbons
D	Disinfection byproducts
ND	Not Determined

Based on this summarized narrative and susceptibility review for each well, the overall susceptibility for Wells 1 and 2 of the Potomac Farms Water Company indicates a high susceptibility to the identified potential sources of contamination for each well.

For this susceptibility analysis, the State combined the inventory results with other relevant information to decide how likely a water supply may become contaminated by the identified potential sources of contamination. This step makes the assessments useful for communities, since it provides information that local decision-makers use to prioritize approaches for protecting the drinking water supply. It does not mean that these wells are currently contaminated or that these wells are going to be contaminated in the near future, but the potential does exist.

RECOMMENDATION FOR YOUR SOURCE WATER ASSESSMENT AND PROTECTION ACTIVITIES

The following list provides specific recommendations for your source water assessment and protection activities.

- An aquifer protection management program should be developed for the well. Preferably, the protection plan should be developed for the entire SWPA with the cooperation of neighboring towns, county, and state agencies. It is recommended that protection and management efforts should focus on obtaining additional information on the sources present to evaluate their risk.
- Plan for and complete the proper abandonment of all inactive supply wells.
- Reduce existing chronic threats by obtaining further detailed information concerning Leaking Underground Storage Tanks (LUST's) or other Underground Storage Tanks (UST's) within the SWPA that are now in service or were in the past. This information should include the type of leak detection and corrosion protection currently being used at the facility.
- Complete required GWUDI assessment. No determination has been made for Well 2 (currently inactive). If this well is placed into service, a separate GWUDI assessment will need to be completed.
- Investigate what types of preventative pollution measures are being conducted by the industrial or commercial facilities located within the SWPA. Some facilities may already have developed their Groundwater Protection Plan (GPP) for their facility.
- Inspect the SWPA regularly.
- Implement Land Use Planning tools to influence future developments within the SWPA. One way to accomplish this is to join forces with the county to adopt a zoning ordinance that would govern certain uses that are considered high threats to ground water.
- Provide maps of the SWPA to the County Planning Commission or other appropriate county agency to make them aware of the location of proposed development in relation to the water supply source.
- Establish funds to purchase land banks of critical areas (e.g. around sinkholes, wells, springs) to preserve the areas from future development.

- Support and encourage the implementation of Best Management Practices for agricultural areas including grazing lands, crop production farms, and orchards. In addition, support information can be provided to residents and commercial users to encourage the reduction in over use of common pesticides and fertilizers.
- Implement systems for regular collection of hazardous waste from residents. For example, the Eastern Panhandle Soil Conservation District and the Jefferson County Solid Waste Authority has helped organize amnesty days in the past where residents could bring in all types of hazardous wastes without threat of punishment.
- Encourage and implement public education about your water supply regarding its susceptibility to contamination and ways to protect. This could come in the form of brochures containing information and advice about ground water and the local terrain. For example, the Jefferson County Health Department has an on-going educational program that is presented to all fourth graders in the county.
- Support and encourage the identification of contamination incidents by citizens.
- Include information regarding contamination and source water protection in mailings to homeowners, including non-emergency contact information. Reduce the amount of septic systems in use by extension of the public sewer system or other approved systems.

NEXT STEP:

The next step in source water protection planning is to prepare or update a Source Water Protection Plan (SWPP) plan. The SWPP plan incorporates this source water delineation and assessment report and the following additional sections:

Contingency Planning

A contingency plan documents the system's planned response to interruption of the source water.

Alternative Sources

Information pertaining to alternative water sources focusing on long-term source replacement should the system be required to develop a new source of water due to contamination (or other reasons). This section outlines the most likely sources that can be utilized.

Management Planning

Management planning is the most important element of SWAP. The management plan identifies specific activities that will be pursued by the system to protect their water resources. The system will benefit by taking a proactive approach to source water protection in their source water protection area. It is anticipated that most of the management effort will focus on coordination with government agencies and periodic surveys of the watersheds. It may be necessary to conduct a limited number of special studies to determine actual risk and consequences for selected contaminant sources. This information may be needed before decisions can be made on management activities.

NEED ADDITIONAL INFORMATION?

To obtain additional information and/or links, visit the WVDHHP Web site at <http://www.wvdhhr.org/oehs/eed/swap/> or call the SWAP Program at 304-558-2981.

***Disclaimer - The coverage presented in this program are under constant revision as new sites or facilities are added. They may not contain all the potential or existing sites or facilities. The West Virginia Bureau for Public Health is not responsible for the use or interpretation of this information.**

Maps contained in this source water assessment report are provided as a public service by the West Virginia Bureau for Public Health. The Bureau makes no representation regarding completeness or accuracy of the data presented thereon. Efforts are made to verify and update the data used to generate the maps. However, with data sets of this size and nature, eliminating all errors is difficult. Thus, the user assumes total responsibility for verification.

Please report any inaccuracies on either the map or inventory by calling the SWAP Program at 304-558-2981.

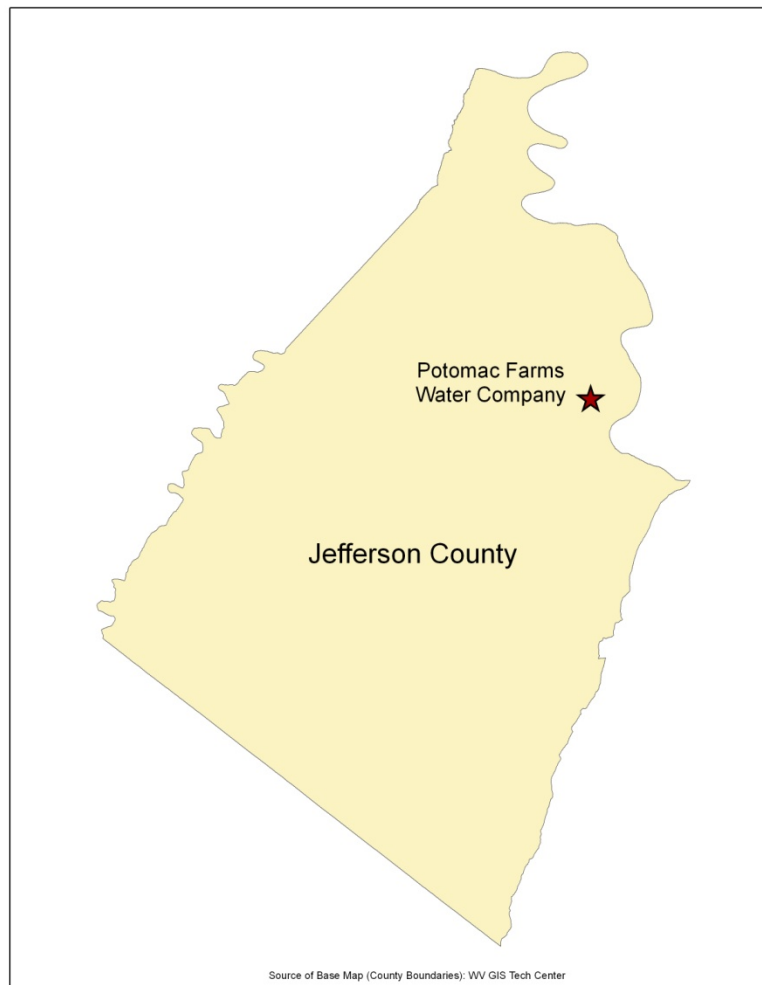


Figure 1: Potomac Farms Water Company Location Map

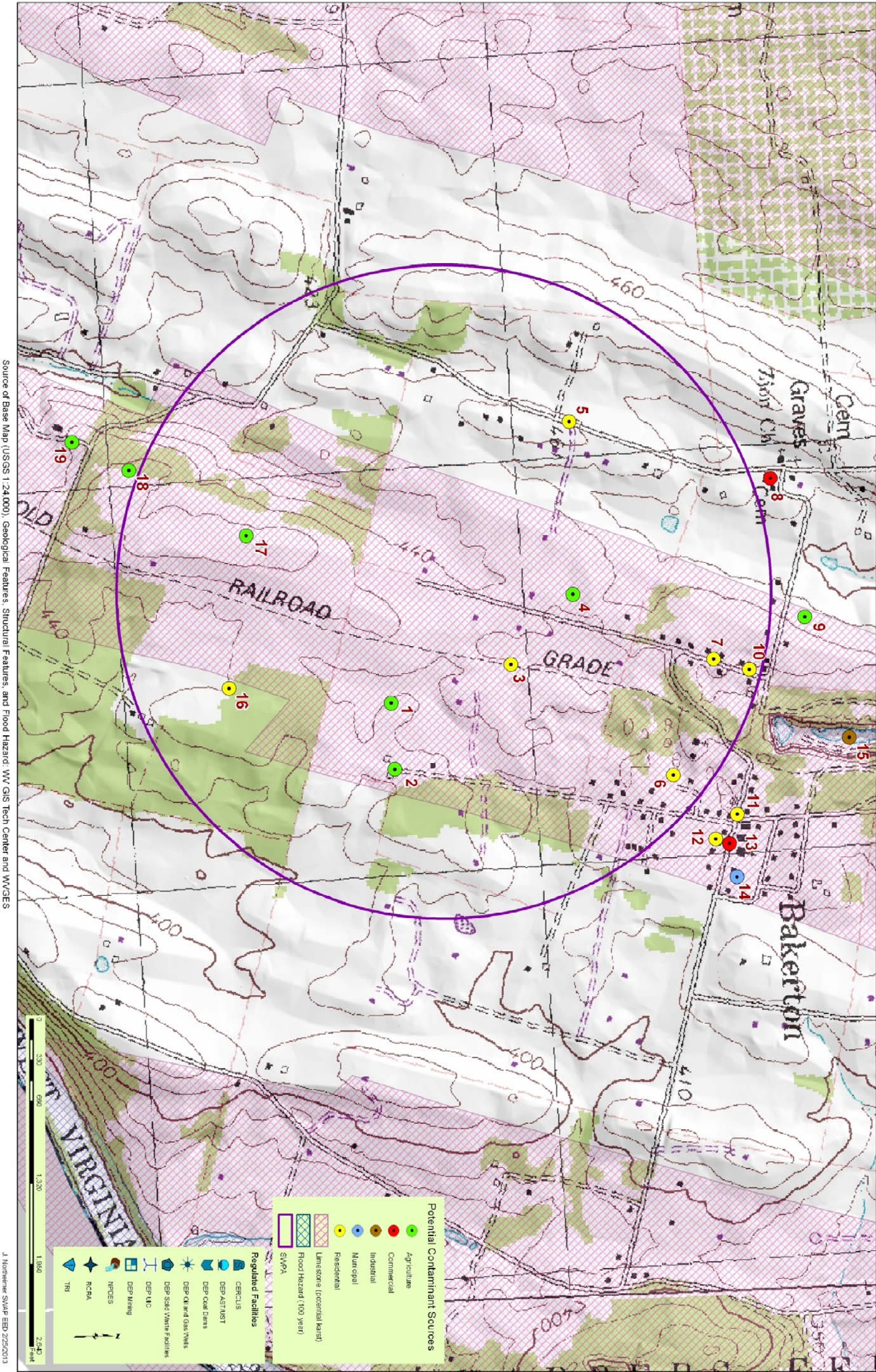


Figure 2: Potomac Farms Water Company Source Water Protection Area with PCS Locations (Topographic Map Background)



Figure 3 Potomac Farms Water Company Source Water Protection Area with PCS Locations (2011 Aerial Photo Background)

Source of Base Map (USGS 1:24,000), Geological Features, Structural Features, and Flood Hazard: WV GIS Tech Center and WVGES

J. Hoffmann SAA/P EEO 2/25/2013

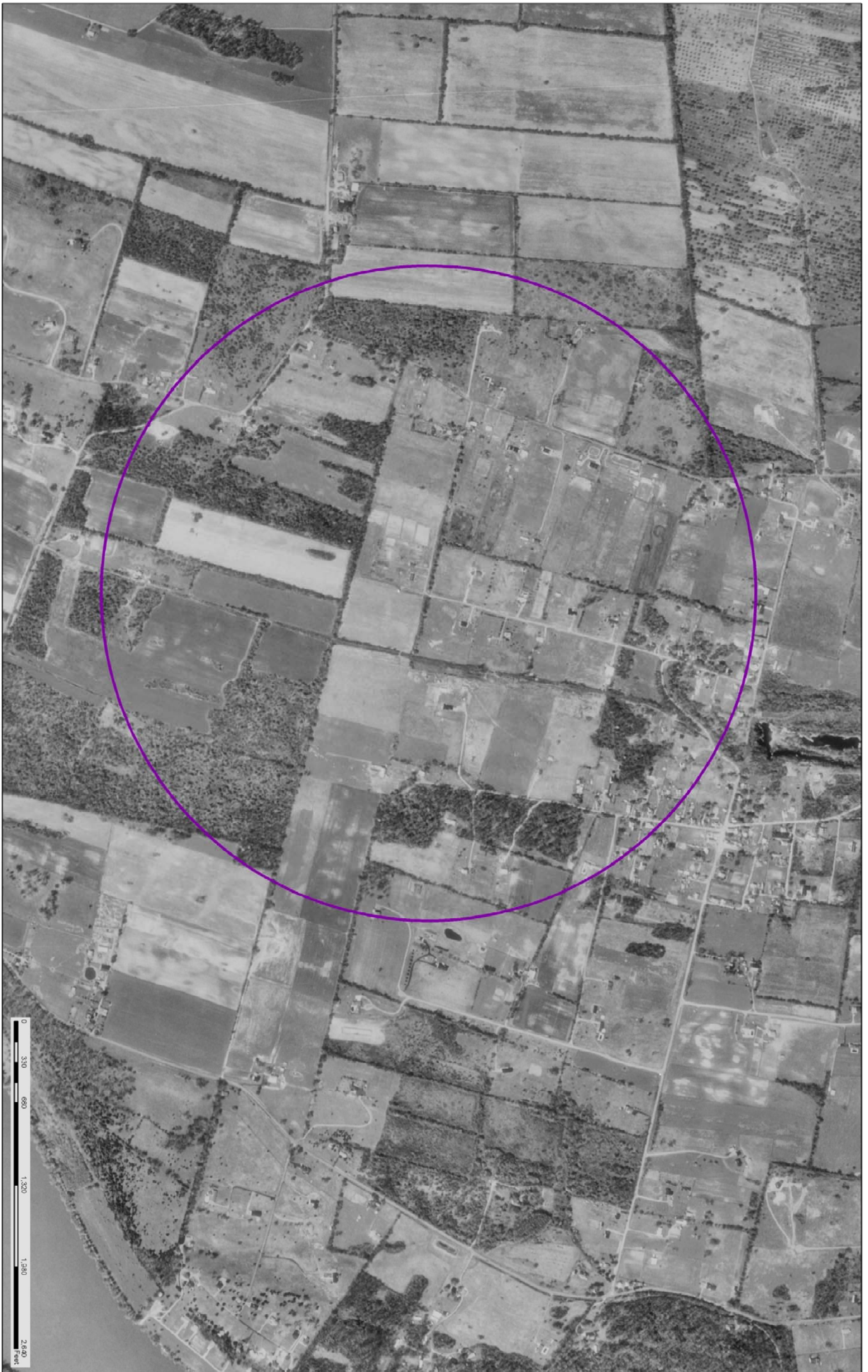


Figure 4 Potomac Farms Water Company Aerial Photographs (1988)

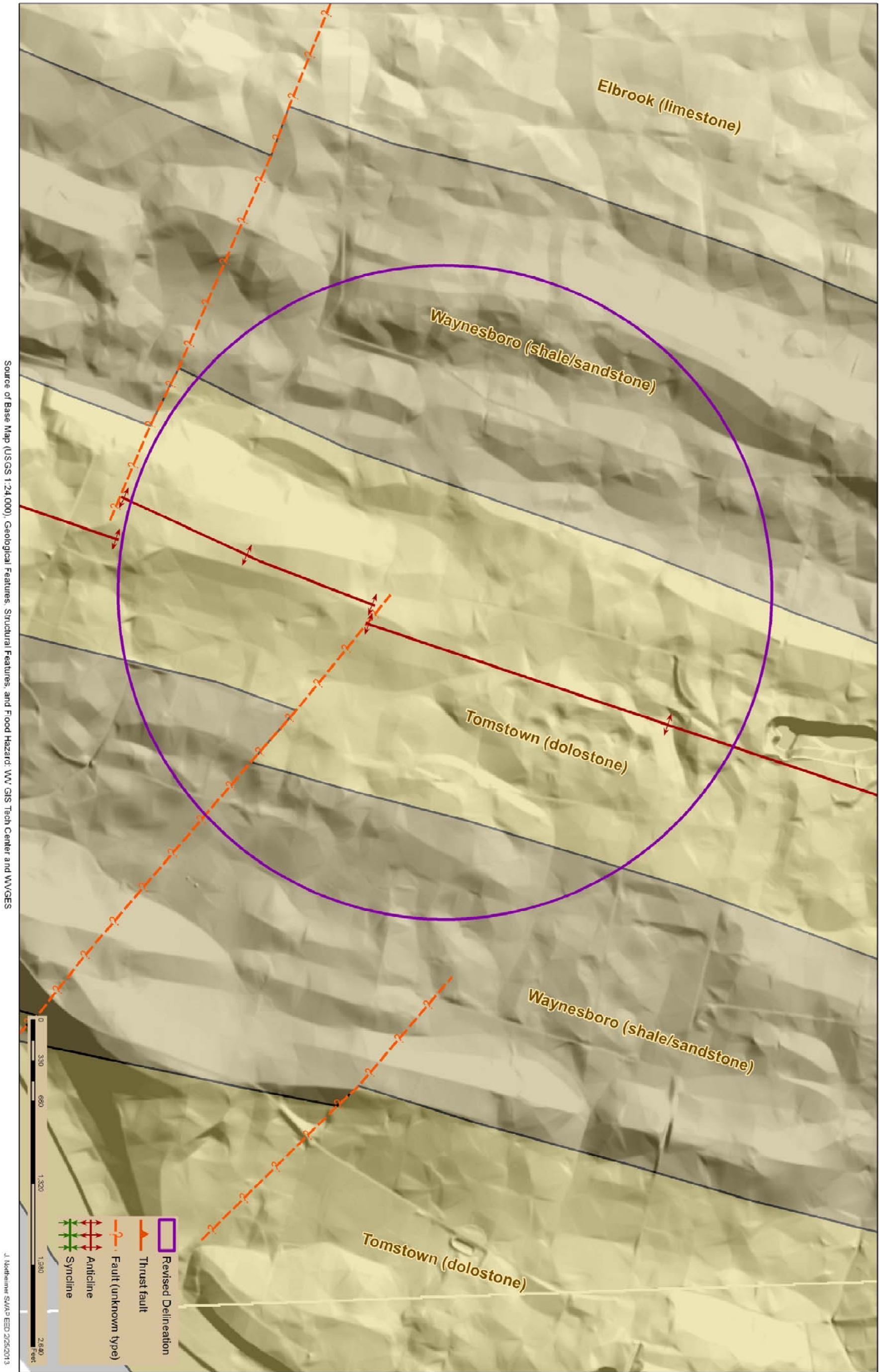


Figure 5 Potomac Farms Water Company Geologic Map

APPENDIX A EPA REGULATED SITES

CERCLIS:

The Superfund program was created by the Comprehensive Environmental Response, Compensation, and Liability Act, amended by the Superfund Amendments and Reauthorization Act. The acts established authority for the government to respond to the release/threat of release of hazardous wastes, including cleanup and enforcement actions. Long-term cleanups at National Priority List sites last more than a year while short term /emergency cleanups are usually completed in less than a year. CERCLIS is a database used by the U.S. Environmental Protection Agency to track activities conducted under its Superfund program. CERCLIS contains data on potentially hazardous waste sites that have been reported to the EPA. Sites are investigated because of a potential for releasing hazardous substances into the environment are added to the CERCLIS inventory. EPA learns of these sites through notification by the owner, citizen complaints, state and local government identification, and investigations by EPA programs other than Superfund. Specific information is tracked for each individual site.

NPDES:

The National Pollutant Discharge Elimination System (NPDES) database identifies facilities permitted for the operation of point source discharges to surface waters in accordance with the requirements of Section 402 of the Federal Water Pollution Control Act. Point sources are discrete conveyances such as pipes or man-made ditches. Industrial, municipal, and other facilities must obtain permits if their discharges go directly to surface waters. The NPDES permit program controls water pollution by regulating point sources that discharge pollutants into public waters.

RCRA:

This database has records for all hazardous waste, generators, and transporters as defined by the Resource Conservation Recovery Act (RCRA). Hazardous waste as defined by RCRA is waste material that exhibits ignitability, corrosivity, reactivity, or toxicity. Hazardous waste comes in many shapes and forms. Chemical, metal, and furniture manufacturing are some examples of processes that create hazardous waste. RCRA tightly regulates all hazardous waste from "cradle to grave" (i.e., from manufacture to disposal).

TRI:

The Toxics Release Inventory (TRI) is a publicly available EPA database that contains information on toxic chemical releases and other waste management activities reported annually by certain covered industry groups as well as federal facilities. This inventory was established under the Emergency Planning and Community Right-to-Know Act of 1986 (EPCRA) and expanded by the Pollution Prevention Act of 1990.

DEP Regulated Sites:

Abandoned Mine Sites:

Abandoned mine features compiled by the Office of Abandoned Mine Lands and Reclamation (AMLR) of the West Virginia Department of Environmental Protection. The AMLR eliminates damage that occurred from mining operations prior to August 3, 1977 and is funded by the AML fund. It corrects hazardous conditions and reclaims abandoned and forfeited mine sites. Typical AML features include highwalls, portals, refuse piles, and mining structures such as tipples.

Coal Dams:

Point and polygonal mining related impoundments regulated by the West Virginia Department of Environmental Protection's (WVDEP) Division of Mining and Reclamation (DMR).

Solid Waste Facilities:

Seventy-eight (78) municipal and non-municipal waste landfills and waste transfers stations. This data layer was published by West Virginia Department of Environmental Protection's (WVDEP) Division of Waste Management in 2/2002.

Oil and Gas Wells:

The Office of Oil and Gas maintains records on over 40,000 active and 25,000 inactive oil & gas wells. It also manages the Abandoned Well Plugging and Reclamation Program.

GLOSSARY OF TERMS

Alluvium - Sediments deposited by moving rivers.

Aquifer - A formation, group of formations, or part of a formation that contains sufficient saturated permeable materials to yield sufficient, economical quantities of water to wells and springs.

Conjunctive Delineation – In cases where a “ground water” source is designated as Ground Water Under the Direct Influence (GWUDI), an additional delineation in addition to the five (5) year time of travel/recharge delineation for ground water will be completed. The additional delineation will account for stream segments outside of the ground water delineation in cases where the area of surface influence is known or reasonably suspected. It should be noted in karst situations particularly, the surface link is not always an adjacent stream, but could come from a stream miles away. In these cases a conjunctive delineation may not always be performed.

Contamination - The addition to water of any substance or property preventing the use of reducing the usability of the water for ordinary purposes such as drinking, preparing food, bathing, washing, recreation, and cooling

Flood Plain - Any land area susceptible to inundation by floodwater from any source.

GWUDI or "Ground Water Under the Direct Influence" - is defined by the EPA as water beneath the surface of the ground with either a significant occurrence of insects or other macro organisms, algae, or large diameter pathogens such as *Giardia lamblia* or *Cryptosporidium* or other water characteristic such as turbidity, temperature, pH or conductivity.

Hydrogeologic Setting - Evaluates the sensitivity of an aquifer. The likelihood of a contaminant reaching a well or spring is a function of the ground water flows patterns, the rate of flow, the distance to the source and the hydraulic characteristics of the contaminant. The technical factors include the well(s) pumping rate and spring flow, the direction, slope and elevation of the water table, transmissivity and storativity characteristics of the aquifer, overlaying material and recharge rate for ground water systems.

100-year Flood Plain - The area adjoining a river, stream, or water course covered by water in the event of a 100 year flood.

100 -year Flood - The flood having a one percent chance of being equaled or exceeded in magnitude in any given year. Contrary to popular belief it is not a flood occurring once every 100 years.

Karst - A term denoting a formation containing soluble rocks, underground solution passages, sinkholes and springs.

Infiltration - The process of, or fluids, entering the soil and recharging aquifers rather than becoming runoff.

Maximum Contaminant Level (MCL) - Defined as the maximum permissible level of a contaminant in water, which is delivered to any user of a public water system.

Physical Integrity of the Well or Spring - This analysis evaluates and reviews the integrity of the well or spring structures needed to protect the water source from a potential contaminant source(s). It is recognized that protective well construction characteristics can prevent the occurrence of contamination even in the presence of potentially significant contaminant sources. The design and construction of a well should include casing without cracks; tight joints between lengths of casing; adequate grout between the casing and bore hole and location (floodplain or flooding area). A spring must be protected with “shoe box” type lid enclosure that is screened and locked to prevent unauthorized entry. Surface water runoff diversion and land use of the recharge area are paramount elements to evaluate. These features provide reasonable assurance that contaminants will not enter the well or spring through any pathway, and allow operators to focus on the potential for contaminants to migrate through the aquifer and enter into the well(s) or spring. However, even a well(s) and springs constructed to the most exacting standards may

lose structural integrity with time. Maintenance records of remedial improvements also will be reviewed in evaluation of integrity.

Potential Contaminant Source (PCS) - A facility or container or route of travel that could release a sufficient amount of a harmful contaminant that upon entering an aquifer or surface stream could contaminate it past the level of human health concerns.

Public Water System - is any water system or water supply which regularly supplies or offers to supply, piped water to the public for human consumption, if serving at least an average of twenty-five (25) individuals per day for at least sixty (60) days per year, or which has at least fifteen (15) service connections.

Recharge - Water entering the upper end of a groundwater flow system.

Remediation - The removal of contaminants from soil and/or ground water.

Sensitivity of the Source Water Protection Area (SWPA) - refers to the hydrologic or hydrogeologic characteristics that affect the transport of the contaminant from a source of contamination to a well or intake.

Source Water Assessment and Protection (SWAP) Program - The program established by the 1996 Amendments to the Safe Drinking Water Act (SDWA) which expanded the initial Wellhead Protection Program to all public drinking water supply systems including surface water systems. This program is to assess, preserve, and protect the source waters which are used to supply water for public drinking water supply systems and to provide a long term availability of an abundant supply of safe water in sufficient quantity for present and future citizens of the State. This program also enables the water supply owners, consumers, and others to initiate and promote actions to protect their drinking water supplies with the developed information.

Source Water Protection Area (SWPA) - refers to the area delineated by the State for a public water system, or including numerous public water systems, whether the source is ground water, surface water or both, as part of the West Virginia SWAP approved by the EPA under section 1453 of the Safe Drinking Water Act.

Susceptibility - The likelihood that a release from a PCS would contaminate and render unusable a drinking water supply such as aquifers or surface streams.

Unconfined Aquifer - An aquifer over which there is no confining layer.

Water quality - Available data will be evaluated to help direct protection activities. If the water quality impact is known, evaluating the source(s) present may help to determine the origin of the contamination and where immediate protection efforts should be focused

Well(s) - refers to ground water intakes including the well structure (i.e., casing, etc) and wellhead.

Wellhead Protection Area (WHPA) - The surface and subsurface area surrounding a water well or well field, supplying a public water system, through which contaminants are reasonably likely to move toward and reach such water well or well field. This area is delineated by the State for ground water source public water systems. The former Wellhead Protection Program (WHPP) is now part of the Source Water Assessment and Protection (SWAP) Program.