

State of West Virginia
Source Water Assessment and Protection Program
Source Water Assessment Report

Revised Report

Rocky Glen Manufactured Housing Community

PWSID WV3300231

Berkeley County



Prepared by:

West Virginia Department of Health and Human Resources
Bureau for Public Health
Office of Environmental Health Services
Source Water Protection Unit

May 27, 2014

TABLE OF CONTENTS

Introduction	3
What is the Purpose of this Revised Report?	3
Table 1 Public Water Supply Information	3
What is my Well's Source Water Protection Area?	4
What is SWAP?	4
What is Susceptibility?	4
How Was my Well's Susceptibility Determined?	4
Table 2 Source of Your Drinking Water - Hydrogeologic Setting	5
Table 3 Physical Integrity of Well	6
Water Quality and Water Treatment Information	6
Evaluation of Significant Potential Sources of Contamination	7
Potential Contaminant Source Inventory	7
Historic Land Use and Land Use Changes	7
Regional Water Supply and Sewage Treatment	7
Overview of Leaking Underground Storage Tanks (LUST)	8
Table 4 Potential Contaminant Sources	9
Table 5 Regulated Facilities	12
Next Step:	16
Need additional information?	16
*Disclaimer	17
Figure 1: Rocky Glen Manufactured Housing Community Location Map	17
Figure 2: Rocky Glen Manufactured Housing Community Source Water Protection Area with PCS Locations (Topographic Map Background)	18
Figure 3 Rocky Glen Manufactured Housing Community Source Water Protection Area with PCS Locations (2011 Aerial Photo Background)	19
Figure 4 Rocky Glen Manufactured Housing Community Aerial Photographs (1988)	20
Figure 5 Rocky Glen Manufactured Housing Community Land Use Change (1988-2011)	21
Figure 6 Rocky Glen Manufactured Housing Community Geologic Map	22
Appendix A USEPA and WVDEP Regulated Sites	23
Glossary of Terms	25

GROUND WATER PUBLIC SUPPLY SYSTEMS

SOURCE WATER ASSESSMENT AND PROTECTION (SWAP) PROGRAM

REPORT

Prepared by: West Virginia Department of Health and Human Resources (WVDHHR), SWAP Program

INTRODUCTION

What is the Purpose of this Revised Report?

A Source Water Assessment Report was previously prepared for Rocky Glen Manufactured Housing Community by West Virginia Department of Health and Human Resources, Bureau for Public Health, Office of Environmental Health Services, Source Water Protection Unit in November 2002 and March 2013. Rocky Glen Manufactured Housing Community is located approximately 0.8 miles south of Spring Mills, Berkeley County, West Virginia along County Route 8₁ (See Figure 1).

Additional database PCS and regulated facility information has been added to the assessment report. This revised assessment report is based on this recently updated information as well as other available information. The original delineation, established by WVDHHR consultant RK&K comprised an area of 4,450 acres. The March 2013 revised report reconfigured the protection area to include 5,440 acres.

This concept of source water protection is a preventative approach and complements the effort of proper treatment and disinfection by the individual water supply systems. This assessment is one step in a multilevel approach to ensure a safe future supply of water by understanding what potential threats exist.

This Source Water Assessment Public Summary is to provide information to support local and state efforts to protect public drinking water source and to maintain a safe and dependable water supply for the protection of human health by preventing contamination. The costs of these preventative measures will rarely exceed the cost of remediating a public water supply once it is contaminated.

The emphasis of this assessment is on “source” water rather than the “tap” water. Information on tap water quality is available in the Consumer Confidence Report, which can be obtained from your local water supplier.

This report identifies the significant potential contaminant sources that could threaten source(s) water quality. Your susceptibility ranking does not imply poor water quality. Actual water quality is best reflected by results of regular water tests. Please refer to Table 1 for an informational summary of your public water supply.

Table 1 Public Water Supply Information

PWS Name	Rocky Glen Manufactured Housing Community
Address	104 Bronco Way
City, State, Zip	Martinsburg, West Virginia 25403
PWSID#	WV3300231
County	Berkeley County
System Type	Community

What is my Well's Source Water Protection Area?

A well(s) source water protection area (SWPA) is the land around the well where protection activities should be focused. The SWPA is the area that is likely contributing water to the well. Please refer to Figure 2 for your SWPA.

What is SWAP?

The SWAP, established under the Safe Drinking Water Act, requires every state to:

- Delineate the area from which a public water supply system receives its water;
- Inventory land uses within the recharge areas of all public water supplies;
- Assess the susceptibility of drinking water sources to contamination from these land uses;
- Publicize the results to provide support for improved protection of sources.

The WVDHHR SWAP will complete all of these components of a source water assessment.

What is Susceptibility?

Susceptibility is a measure of your well field's potential to become contaminated by land uses and activities within the SWPA. The purpose of a susceptibility analysis is to provide an overview to actions a public water system may take to further reduce the susceptibility to their drinking water supply. Because public water supply wells have been constructed in various hydrologic settings and have a range of potentially significant contaminant sources, best professional judgment has been used in determining the susceptibility of each public water system to contamination. The possibility of a release from potential contaminant sources is greatly reduced if Best Management Practices (BMP's) are used. The susceptibility determination for your well did not take into account whether BMP's are being used.

Susceptibility of drinking water does not mean a customer will drink contaminated water. Water suppliers protect drinking water by monitoring and treating water supplies, and using BMP's and source water protection measures to ensure that safe water is delivered to the tap.

How Was my Well's Susceptibility Determined?

Your well field's susceptibility is based on the following parameters:

- Review of the hydrologic setting (ease of contamination transport through each materials present in the local hydrologic setting);
- Review of the physical integrity of the well(s);
- Review of available ground water quality data;
- Characterization of the potential significant contaminant sources identified in the SWPA;
- Integration of this information to identify the greatest threats to the source water and suggestions of appropriate protection strategies or activities.

Table 2 Source of Your Drinking Water - Hydrogeologic Setting

Well Name	Geologic Setting/Sensitivity
Well 1 - WL001 (inactive)	Karst Area/ High Sensitivity Valley and Ridge (fracture)/ Moderate Sensitivity
Well 2 - WL002 (inactive)	
Well 3 - WL003 (inactive)	
Well 4 - WL004 (active)	
Well 5 - WL005 (active)	
Abandoned Well – Well (A)	

The Rocky Glen Manufactured Housing Community water system serves a population of approximately 835 people. The supply is from two active source wells (Wells 4 and 5). There are three inactive wells (Wells 1, 2, and 3) and one abandoned well present at the facility. Total raw water production is approximately 66,500 GPD. The source wells are located in a Karst area and the Valley and Ridge Province of West Virginia.

Karst areas consist of underlying karstified limestone or dolostone with subterranean drainage. The Valley and Ridge Province consists of complex faulted blocks that contain either localized-confined or localized unconfined aquifers, or lack of aquifers. The aquifers may be porous media or fractured rock. The source wells are located along the west limb of the Massanutten Syncline. Rock units within the SWPA include those of the Elbrook and Conococheague Groups, and the Stonehenge Limestone and Rockdale Run Formation of the Beekmantown Group (See Figure 6).

Limestone, present within the protection area, is subject to possible solution channel and sinkhole development. Surface waters can enter the ground water regime very quickly via direct injection through sinkholes or other fracture or solution openings. The type of flow in karst areas is described as being conduit flow and is delivered via strike oriented cave passages or along fault planes and fault passages.

Major structural features (axis of anticlines and synclines) are oriented in a northeast/southwest direction. One major thrust fault occurs within the SWPA and is oriented parallel to structure. Many transverse faults occur with displacement perpendicular to structure.

The original delineation, established by WVDHHR consultant RK&K comprised an area of 4,455 acres. The March 2013 revised report reconfigured the boundaries of the protection area to include 5,440 acres. This new delineation was defined by WVDHHR using site specific and regional data for the system. This new delineation used hydrogeologic mapping based on the original groundwater flow model developed by RK&K, local geologic structure, probable direction of regional ground water flow based on published reports (see reference list below), bedrock lithology, regional dye trace data, and topography to define the area of possible source water contribution to the wells.

The estimated land area (approximately 5,440 acres) that may contribute water to the wells is depicted in the attached map (Figure 2) as the Source Water Protection Area. However, source water and contaminant sources may originate from greater distances than encompassed by this interim delineation. Future revisions to the SWPA may occur as additional geohydrologic information becomes available.

References

Kozar, M. D., and Weary, D. J., 2009, Hydrogeology and ground-water flow in the Opequon Creek watershed area, Virginia and West Virginia: U.S. Geological Survey Scientific Investigations Report 2009-5153, 61 p.

Fracture trace map and single-well aquifer test results in a carbonate aquifer in Berkeley County, West Virginia, by Kurt J. McCoy, Melvin H. Podwysocki, E. Allen Crider, and David J. Weary: U.S. Geological Survey Open-file Report 2005-1040, 1 plate.

Mathes, Melvin V., 2000. Relation of bacteria in limestone aquifers to septic systems in Berkeley County, West Virginia: U.S. Geological Survey Water-Resources Investigations Report 00-4229, 17 p.

Shultz, R. A., Hobba, W. A., and Kozar, M. D., 1995, Geohydrology, ground-water availability, and ground-water quality of Berkeley County, West Virginia, with emphasis on the carbonate-rock area: U.S. Geological Survey Water-Resources Investigations Report 93-4073, 88 p.

Table 3 Physical Integrity of Well

Well Name	Completion Date	Completion Report	Well/Casing Depth (feet)	Grout	Source Integrity
Well 1 - WL001 (inactive)	1982	No	530/50	No	Unknown
Well 2 - WL002 (inactive)	1988	No	810/50	Yes	Meets Standards
Well 3 - WL003 (inactive)	2001	Yes	1,000/100	Yes	Meets Standards
Well 4 - WL004 (active)	2004	Yes	80/60	Yes	Meets Standards
Well 5 - WL005 (active)	2005	Yes	65/50	Yes	Meets Standards
Abandoned Well – Well (A)	Unknown	No	NA	NA	NA

Wells may vary in their construction characteristics and in the geologic rock types in which they occur. The lack of an effective grout and sanitary seals are avenues by which contaminants from nearby surface water bodies or overland runoff can percolate to wells.

Water Quality and Water Treatment Information

The Ground Water Under the Direct Influence (GWUDI) assessment evaluates contaminants that may enter the water drawn directly from the well. Rocky Glen Manufactured Housing Community Wells 4 and 5 were designated NOT GWUDI by letters dated February 13, 2006 and January 18, 2006, respectively. Wells 1 and 2 were designated NOT GWUDI in 1999. No determination has been made for Well 3, as it was inactive at the time sample results were submitted.

The contaminants addressed in this assessment include those regulated under the Safe Drinking Water Act as well as those the WVDHHR has determined may present a concern to public health. The latest analysis for a variety of bacterial, organic, nitrate, synthetic and inorganic contaminants in the water after treatment have yielded values below the maximum contaminant level (MCL) as regulated by the Safe Drinking Water Act. The August 23, 2013 inorganic test results for nitrate show a level of 4.69 mg/l. This is approaching one half of the MCL (5 mg/l) for nitrate—a level that would trigger quarterly monitoring for a year. Because sampling requirements are for treated water, the lack of water quality impacts does not necessarily indicate a lack of contamination. This determination is limited by the sampling that is performed for the water system.

All drinking water including bottled water may reasonably be expected to contain small amounts of some contaminants. The presence of contaminants does not necessarily indicate that water poses a health risk. For further information regarding the quality of the system's finished water, please refer to the Consumer Confidence Report or call the Environmental Protection Agency's Safe Drinking Water Hotline at 1-800-426-4791 or contact your local health provider for more information about contaminants and potential health effects.

EVALUATION OF SIGNIFICANT POTENTIAL SOURCES OF CONTAMINATION

Potential Contaminant Source Inventory

The inventory for Rocky Glen Manufactured Housing Community consists of approximately 103 significant Potential Contaminant Sources (PCS) of which 39 are considered higher threats to ground water. Please refer to Table 4 for a listing of identified PCSs and Figures 2 and 3 for their locations within the SWPA. Regulated facilities and activities are listed in Table 5 and located on Figures 2 and 3, if present within the SWPA.

Some PCSs that are located outside of the SWPA may be included for information purposes. Water supply wells are not identified on the map for security reasons. Some facilities are not located on the SWPA map as they occur over broad geographic areas (agricultural fields, highways, and railroad right-of-ways).

Each significant potential source of contamination has been analyzed and prioritized (low, medium, and high, unless otherwise noted) relative to its potential to impact the water supply. It is important to note that the links between the PCS and the primary contaminant types are not intended to be comprehensive, but only those commonly associated with the PCS. Any potential source may have one or more types of contaminants associated with the chemicals indicated. Threat rankings are a combination of the perceived risk of the release of a contaminant from a land use area, the migration route of the contaminant to the well and the relative public health risk of the contaminant itself. The risk rankings are based on the general nature of their activities and the contaminants associated with them, not on facility specific information, such as management practices. This ranking does not take into consideration any unforeseen releases or the dynamics of new PCS's within the delineated SWPA.

A detailed risk assessment of PCS's was beyond the scope of what could be accomplished with available resources and data. A detailed risk analysis is more meaningful when prepared by local decision makers as the bridge from assessment work to protection strategies.

Historic Land Use and Land Use Changes

Historic land use within the SWPA has been primarily agricultural including orchards, various crops, hay production, dairy farms, and livestock grazing. Aerial photographs were examined to determine major changes in land use that have occurred during the last 20 years.

Between 1988 and 2011, 928 additional acres were converted from agricultural land to moderate to high density housing, manufacturing facilities, or business locations representing an increase of 289%. In 1988, 5.9% of SWPA area was developed and in 2011, 22.9%. Figure 5 illustrates these changes.

Regional Water Supply and Sewage Treatment

Ground water is a primary source of drinking water supply to both private and public water systems within the SWPA. Rocky Glen Manufactured Housing Community was previously served by a package wastewater treatment plant but is now on public sewer. There are still individual septic systems and at least six WVDEP regulated UIC septic systems within the SWPA.

Overview of Leaking Underground Storage Tanks (LUST)

Commercial and industrial development is concentrated along the I-81 corridor and at the Exit 16 interchange. The WVDEP LUST inventory includes LUSTs in the Hedgesville and Martinsburg areas.

Note: The WVDEP LUST Inventory does not provide location coordinates - only physical addresses are provided. Other facilities may be present in your source water protection area. Please contact the WVDEP for more information at 304-926-0499. A current list of LUST sites is maintained by the WVDEP and can be obtained online at <http://www.dep.wv.gov/dlr/oer/lustmain/Pages/default.aspx>. To obtain additional information on any of the LUST sites, you may submit a Freedom of Information Act (FOIA) request to DEPFOIA@wv.gov.

Table 4 Potential Contaminant Sources

Sequential No.	Map Code	PCS Description	PCS Name	PCS Category	Associated Chemicals	Threat to GW
1	C-1	Above Ground Storage Tanks	Above Ground Storage Tanks	Commercial	PH, VOC	L
2	C-43	Repair Shops (engine, appliances, etc.)	Repair Shops (engine, appliances, etc.)	Commercial	PH, VOC, SOC	H
3	M-33	Sewage Treatment Impoundments	Sewage Treatment Impoundments	Municipal	MP, NN, D	H
4	R-4	Residential (single family homes)	Residential (single family homes)	Residential	VOC, SOC, NN	H
5	A-22	Other (farm)	Other (farm)	Agriculture	ND	ND
6	A-7	Crops: other	Crops: other	Agriculture	NN, MP, SOC	L
7	A-18	Pasture	Pasture	Agriculture	MP, SOC	L
8	I-27	Permitted Discharge Pipe (outfall)	Permitted Discharge Pipe (outfall)	Industrial	ALL	L
9	A-7	Crops: other (watercress)	Crops: other (watercress)	Agriculture	NN, MP, SOC	L
10	C-9	Cemetery	Cemetery	Commercial	M, SOC, PH	L
11	R-4	Residential (single family homes)	Residential (single family homes)	Residential	VOC, SOC, NN	H
12	A-12	Farm Machinery Areas	Farm Machinery Areas	Agriculture	PH, VOC	L
13	A-5	Crops: Corn, Soybean, Wheat	Crops: Corn, Soybean, Wheat	Agriculture	NN, SOC, MP	L
14	A-6	Crops: Orchards	Crops: Orchards	Agriculture	NN, SOC	L
15	A-5	Crops: Corn, Soybean, Wheat	Crops: Corn, Soybean, Wheat	Agriculture	NN, SOC, MP	L
16	C-49	Utility Substation Transformers	Utility Substation Transformers	Commercial	PH, VOC, SOC	H
17	R-4	Residential (single family homes)	Residential (single family homes)	Residential	VOC, SOC, NN	H
18	A-6	Crops: orchards	Crops: orchards	Agriculture	NN, SOC	L
19	A-6	Crops: orchards	Crops: orchards	Agriculture	NN, SOC	L
20	R-4	Residential (single family homes)	Crown Point North Subdivision	Residential	VOC, SOC, NN	H

Sequential No.	Map Code	PCS Description	PCS Name	PCS Category	Associated Chemicals	Threat to GW
21	I-30	Public Utilities (phone, gas, electric power)	Public Utilities (phone, gas, electric power)	Industrial	M, VOC, SOC	M
22	C-41	Railroad Tracks and Yards	Railroad Tracks and Yards	Commercial	PH, M, VOC, SOC	H
23	C-53	Other (self-storage units)	Other (self-storage units)	Commercial	ND	ND
24	R-4	Residential (single family homes)	Residential (single family homes)	Residential	VOC, SOC, NN	H
25	M-21	Schools	Schools	Municipal	SOC, D, VOC, PH	L
26	R-4	Residential (single family homes)	Residential (single family homes)	Residential	VOC, SOC, NN	H
27	C-53	Other (church parking lot)	Other (church parking lot)	Commercial	VOC, PH	L
28	R-4	Residential (single family homes)	Residential (single family homes)	Residential	VOC, SOC, NN	H
29	A-22	Other (farm)	Other (farm)	Agriculture	ND	ND
30	I-30	Public Utilities (phone, gas, electric power)	Berkeley Co. Public Service Sewer Dist.	Industrial	M, VOC, SOC	M
31	C-21	Hardware/lumber/parts stores	W. Harley Miller Contractors, Inc.	Commercial	VOV, SOC, HM, M	L
32	C-18	Gas Stations	Shell Gas Station	Commercial	PH, M, VOC, SOC	H
33	C-7	Car dealerships	Heffle Motor Company	Commercial	PH, VOC	H
34	C-43	Repair Shops (engine, appliances, etc.)	Used Appliance Sales	Commercial	PH, VOC, SOC	H
35	C-14	Fleet/truck/bus terminals	Fruit Distributor	Commercial	M, VOC, HM, SOC, PH	H
36	C-3	Auto repair shops	Martinsburg Service Center	Commercial	PH, M, VOC, HM, SOC	H
37	R-4	Residential (single family homes)	Residential (single family homes)	Residential	VOC, SOC, NN	H
38	R-4	Residential (single family homes)	Subdivision	Residential	VOC, SOC, NN	H
39	A-18	Pasture	Pasture	Agriculture	MP, SOC	L
40	A-18	Pasture (dairy)	Pasture (dairy)	Agriculture	MP, SOC	L
41	C-53	Other (manufacturing)	Other (manufacturing)	Commercial	ND	ND

Sequential No.	Map Code	PCS Description	PCS Name	PCS Category	Associated Chemicals	Threat to GW
42	C-53	Other (manufacturing)	Other (manufacturing)	Commercial	ND	ND
43	C-53	Other (manufacturing)	Other (manufacturing)	Commercial	ND	ND
44	C-41	Railroad Tracks and Yards	Railroad Tracks and Yards	Commercial	PH, M, VOC, SOC	H
45	R-4	Residential (single family homes)	Residential (single family homes)	Residential	VOC, SOC, NN	H
46	C-10	Construction Areas	Construction Areas	Commercial	M, T, PH, VOC, SOC, HM	M
47	C-41	Railroad Tracks and Yards	Railroad Tracks and Yards	Commercial	PH, M, VOC, SOC	H
48	C-10	Construction Areas	Construction Areas	Commercial	M, T, PH, VOC, SOC, HM	M
49	A-22	Other (farm)	Oakwood Farm	Agriculture	ND	ND
50	C-20	Golf courses	Golf courses	Commercial	VOC, SOC, PH	M
51	C-18	Gas Stations	CITGO Gas Station	Commercial	PH, M, VOC, SOC	H
	M-5	Drinking Water Treatment Plants	Drinking Water Treatment Plants	Municipal	D	L
	M-31	Wells: water supply	Wells: water supply	Municipal	VOC, SOC	L
	M-7	Highway (Interstate 81)	Highway (Interstate 81)	Municipal	PH, VOC, M	M
	M-7	Highway (State Route 9)	Highway (State Route 9)	Municipal	PH, VOC, M	M
	M-7	Highway (State Route 901)	Highway (State Route 901)	Municipal	PH, VOC, M	M

Please note that the locations of springs/wells and water treatment plants are not displayed on figures due to security reasons.

Table 5 Regulated Facilities

Sequential No.	Map Code	PCS Name		PCS Category	Associated Chemicals	Threat to GW
R1	D-6	TRI	Quad/Graphics Inc.	Database	HM, M, VOC, SOC, R	H
R2	R8	DEP Regulated UIC (septic)	Woodbrier Golf Course	Residential	MP, VOC, SOC, TO, NN	H
R3	R8	DEP Regulated UIC (septic)	Berkley Co. Public Service Water	Residential	MP, VOC, SOC, TO, NN	H
R4	C-1	AST (diesel)	Berkley Co. Public Service Water	Commercial	PH, VOC	L
R5	R-7	DEP Regulated UIC (low flow septic)	BNM Auto Repair	Residential	MP, VOC, SOC, TO, NN	M
R6	R8	DEP Regulated UIC (septic)	Oasis	Residential	MP, VOC, SOC, TO, NN	H
R7	R-7	DEP Regulated UIC (low flow septic)	Spurgeon Trucking	Residential	MP, VOC, SOC, TO, NN	M
R8	C-1	AST (diesel)	Spurgeon Trucking	Commercial	PH, VOC	L
R9	R8	DEP Regulated UIC (septic)	Martinsburg Christian Academy	Residential	MP, VOC, SOC, TO, NN	H
R10	D-6	TRI	Aker Plastics Co. Inc.	Database	HM, M, VOC, SOC, R	H
R11	D-4	RCRA – Registry ID 110000344388	Quad/Graphics Inc.	Database	PH, R, HM, M, VOC, SOC	H
R12	D-4	RCRA – Registry ID 110046451219	Shockey Commerce Center	Database	PH, R, HM, M, VOC, SOC	H
R13	D-3	NPDES – Registry ID 110054976273	General Motors Service Parts	Database	All	L
R14	D-3	NPDES – Registry ID 110055012962	Shockey Commerce Center - Phas	Database	All	L
R15	D-3	NPDES – Registry ID 110046137569	Shockey Commerce Center	Database	All	L
R16	D-3	NPDES – Registry ID 110024874974	East Park Acquisition Inc.	Database	All	L
R17	D-4	RCRA – Registry ID 110031332902	HD Supply Waterworks LTD #WW5140	Database	PH, R, HM, M, VOC, SOC	H
R18	D-3	NPDES – Registry ID 110046133652	RT 9 West Rocs	Database	All	L
R19	D-4	RCRA – Registry ID 110012558384	Martinsburg Service Center	Database	PH, R, HM, M, VOC, SOC	H
R20	D-3	NPDES – Registry ID 110054930456	Ridgefield	Database	All	L

Sequential No.	Map Code	PCS Name		PCS Category	Associated Chemicals	Threat to GW
R21	D-4	RCRA – Registry ID 110040369197	Printing Impressions	Database	PH, R, HM, M, VOC, SOC	H
R22	D-3	NPDES – Registry ID 110054971385	Residential Formerly Known As	Database	All	L
R23	D-4	RCRA – Registry ID 110031395602	Route 9 Shell	Database	PH, R, HM, M, VOC, SOC	H
R24	D-3	NPDES – Registry ID 110055037428	Macy’s Distribution Center	Database	All	L
R25	D-3	NPDES – Registry ID 110046138988	Eastern Panhandle Warehouses	Database	All	L
R26	D-4	RCRA – Registry ID 110040369222	All Tune and Lube	Database	PH, R, HM, M, VOC, SOC	H
R27	D-3	NPDES – Registry ID 110055012267	Valley Farm Credit, L.D.U.	Database	All	L
R28	D-4	RCRA – Registry ID 110005269814	Berkeley County Brd of Ed-Trans Dept	Database	PH, R, HM, M, VOC, SOC	H
R29	D-3	NPDES – Registry ID 110054986486	Grade Road	Database	All	L
R30	D-4	RCRA – Registry ID 110005575902	GMC Service Parts Operation Plant #51	Database	PH, R, HM, M, VOC, SOC	H
R31	D-3	NPDES – Registry ID 110054989170	Quad/Graphics, Inc., Chemical	Database	All	L
R32	D-4	RCRA – Registry ID 110046249519	Macy’s Logistics & Operations WV – DC2	Database	PH, R, HM, M, VOC, SOC	H
R33	D-4	RCRA – Registry ID 110012177811	FEDEX Smart Post	Database	PH, R, HM, M, VOC, SOC	H
R34	D-3	NPDES – Registry ID 110046124476	BCPSWD Office & Maintenance	Database	All	L
R35	D-3	NPDES – Registry ID 110055017618	Macy’s Fulfillment Center	Database	All	L
R36	D-3	NPDES – Registry ID 110055013756	Cumbo Yard Water Tank	Database	All	L
R37	D-3	NPDES – Registry ID 110054971599	Rankin Homes	Database	All	L
R38	D-3	NPDES – Registry ID 110046124984	Stone Crest Subdivision	Database	All	L
R39	D-3	NPDES – Registry ID 110054932837	Lowe’s Flatbed Distributi	Database	All	L
R40	D-3	NPDES – Registry ID 110045520405	Grade Road Waste Site	Database	All	L
R41	D-3	NPDES – Registry ID 110046141974	Archer’s Rock Section 3	Database	All	L

Sequential No.	Map Code	PCS Name		PCS Category	Associated Chemicals	Threat to GW
R42	D-3	NPDES – Registry ID 110046133983	Archer’s Rock Section 1	Database	All	L
R43	D-3	NPDES – Registry ID 110054998482	Archers Rock, Section 2	Database	All	L
R44	D-3	NPDES – Registry ID 110055017985	Fairfax Farm Section 2	Database	All	L
R45	D-3	NPDES – Registry ID 110055005444	Willow Ridge	Database	All	L
R46	D-3	NPDES – Registry ID 110054952280	Ropp Lots 1-4	Database	All	L
R47	D-3	NPDES – Registry ID 110055002072	Rocky Glen MHP	Database	All	L
See also the “Overview of Leaking Underground Storage Tanks” Section						

Note: Regulated facility location information is derived from external databases and has not been field confirmed or verified and is subject to error. The West Virginia Bureau for Public Health is not responsible for the use or interpretation of this information.

You may check on the status of USEPA regulated facilities by going to the USEPA Envirofacts link and entering the necessary query information - http://www.epa.gov/enviro/html/fii/fii_query_java.html. The name of the facility and the registry ID are provided in the Regulated Facility table of the SWAR.

See Appendix A for an explanation of regulated activities

Index to Associated Chemicals is as follows:			
MP	Microbiological Pathogens: Total/Fecal Coliform, Viruses, Protozoa	T	Turbidity
NN	Nitrate/Nitrite	TO	Taste and Odor precursors
VOC	Volatile Organic Compounds	R	Radionuclides
HM	Heavy Metals	PH	Petroleum Hydrocarbons
M	Metals	D	Disinfection byproducts
SOC	Synthetic Organic Compounds	ND	Not Determined

Index to Threat Ratings:	
H	High
M	Medium
L	Low
ND	Not Determined

Based on this summarized narrative and susceptibility review for each well, the overall susceptibility for Wells 1, 2, 3, 4, and 5 of the Rocky Glen Manufactured Housing Community indicates a high susceptibility to the identified potential sources of contamination.

For this susceptibility analysis, the State combined the inventory results with other relevant information to decide how likely a water supply may become contaminated by the identified potential sources of contamination. This step makes the assessments useful for communities, since it provides information that local decision-makers use to prioritize approaches for protecting the drinking water supply. It does not mean that these wells are currently contaminated or that these wells are going to be contaminated in the near future, but the potential does exist.

RECOMMENDATION FOR YOUR SOURCE WATER ASSESSMENT AND PROTECTION ACTIVITIES

The following list provides specific recommendations for your source water assessment and protection activities.

- Communicate with local emergency services concerning potential treats to your water source from highway spills and other potential material releases. Set up a notification system where the PCS owner will notify the water system in a timely manner if a release occurs.
- An aquifer protection management program should be developed for the well. Preferably, the protection plan should be developed for the entire SWPA with the cooperation of neighboring towns, county, and state agencies. It is recommended that protection and management efforts should focus on obtaining additional information on the sources present to evaluate their risk.
- Plan for and complete the proper abandonment of all inactive supply wells. Abandonment of wells must be completed by a West Virginia certified water well driller and requires an approved West Virginia state issued permit prior to commencement of abandonment activities.
- Reduce existing chronic threats by obtaining further detailed information concerning Leaking Underground Storage Tanks (LUST's) or other Underground Storage Tanks (UST's) within the SWPA that are now in service or were in the past. This information should include the type of leak detection and corrosion protection currently being used at the facility. For more information contact the WVDEP at 304-926-0499. A current list of LUST sites is maintained by the WVDEP and can be obtained online at <http://www.dep.wv.gov/dlr/oer/lustmain/Pages/default.aspx>.
- Investigate what types of preventative pollution measures are being conducted by the industrial or commercial facilities located within the SWPA. Some facilities may already have developed their Groundwater Protection Plan (GPP) for their facility.
- Inspect the SWPA regularly.
- Implement Land Use Planning tools to influence future developments within the SWPA. One way to accomplish this is to join forces with the county to adopt a zoning ordinance that would govern certain uses that are considered high threats to ground water.
- Provide maps of the SWPA to the County Planning Commission or other appropriate county agency to make them aware of the location of proposed development in relation to the water supply source.

- Establish funds to purchase land banks of critical areas (e.g. around sinkholes, wells, springs) to preserve the areas from future development.
- Support and encourage the implementation of Best Management Practices for agricultural areas including grazing lands, crop production farms, and orchards. In addition, support information can be provided to residents and commercial users to encourage the reduction in over use of common pesticides and fertilizers.
- Implement systems for regular collection of hazardous waste from residents. For example, the Eastern Panhandle Soil Conservation District and the Berkeley County Solid Waste Authority has helped organize amnesty days in the past where residents could bring in all types of hazardous wastes without threat of punishment.
- Encourage and implement public education about your water supply regarding its susceptibility to contamination and ways to protect. This could come in the form of brochures containing information and advice about ground water and the local terrain. For example, the Berkeley County Health Department has an on-going educational program that is presented to all fourth graders in the county.
- Support and encourage the identification of contamination incidents by citizens.
- Include information regarding contamination and source water protection in mailings to homeowners, including non-emergency contact information. Reduce the amount of septic systems in use by extension of the public sewer system or other approved systems.

NEXT STEP:

Rocky Glen Manufactured Housing Community should review the PWS's existing Source Water Protection Plan and incorporate the additional information contained in this revised Source Water Assessment. Staff from the WVDHHR is available to assist you in making any necessary changes. Please contact the Source Water Protection Program at 304-558-2981. **Note: Your system may fall under the requirements of Senate Bill 373 (effective June 6, 2014) if it is a surface water source or a groundwater source under the direct or indirect influence of surface water. Please contact the SWAP Program at 304-558-2981 for specific protection plan requirements and further information.**

NEED ADDITIONAL INFORMATION?

To obtain additional information and/or links, visit the WVDHHP Web site at <http://www.wvdhhr.org/oehs/eed/swap/> or call the SWAP Program at 304-558-2981.

***DISCLAIMER**

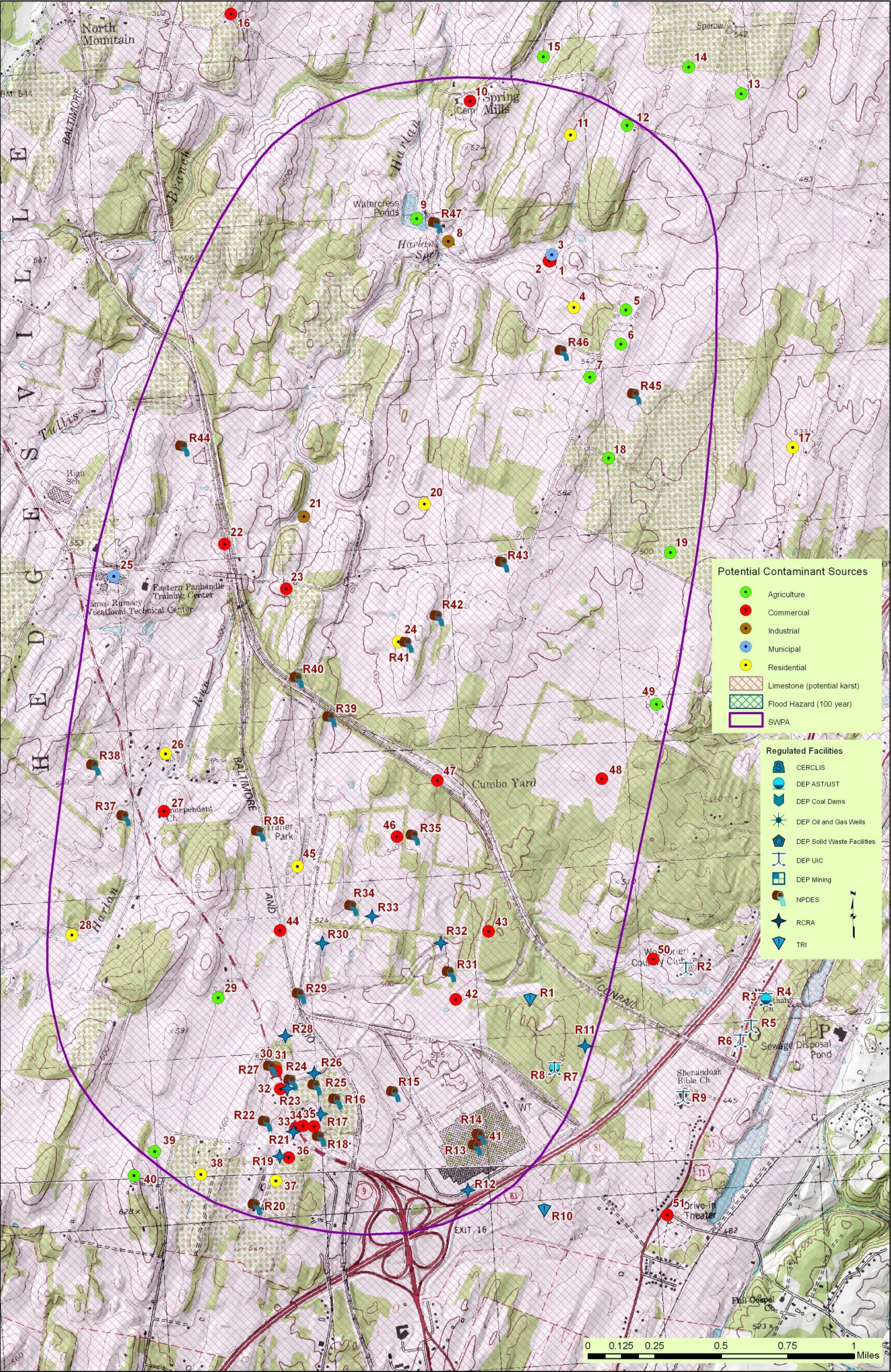
The coverage presented in this program is under constant revision as new sites or facilities are added. They may not contain all the potential or existing sites or facilities. The West Virginia Bureau for Public Health is not responsible for the use or interpretation of this information.

Maps contained in this source water assessment report are provided as a public service by the West Virginia Bureau for Public Health. The Bureau makes no representation regarding completeness or accuracy of the data presented thereon. Efforts are made to verify and update the data used to generate the maps. However, with data sets of this size and nature, eliminating all errors is difficult. Thus, the user assumes total responsibility for verification.

Please report any inaccuracies on either the map or inventory by calling the SWAP Program at 304-558-2981.

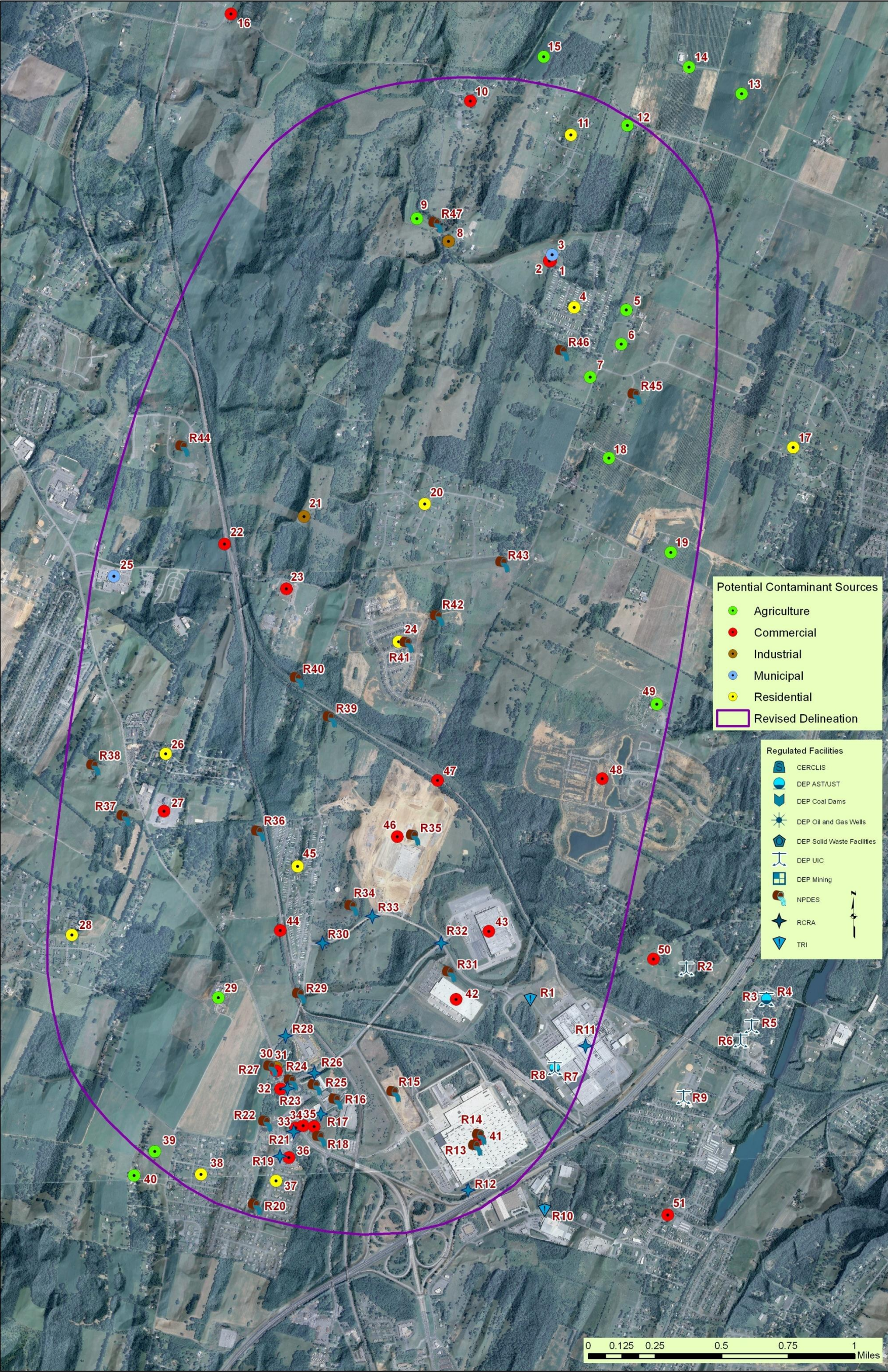


Figure 1: Rocky Glen Manufactured Housing Community Location Map



Source of Base Map (USGS 1:24,000), Geological Features, Structural Features, and Flood Hazard: WV GIS Tech Center and WVGES

Figure 2: Rocky Glen Manufactured Housing Community Source Water Protection Area with PCS Locations (Topographic Map Background)



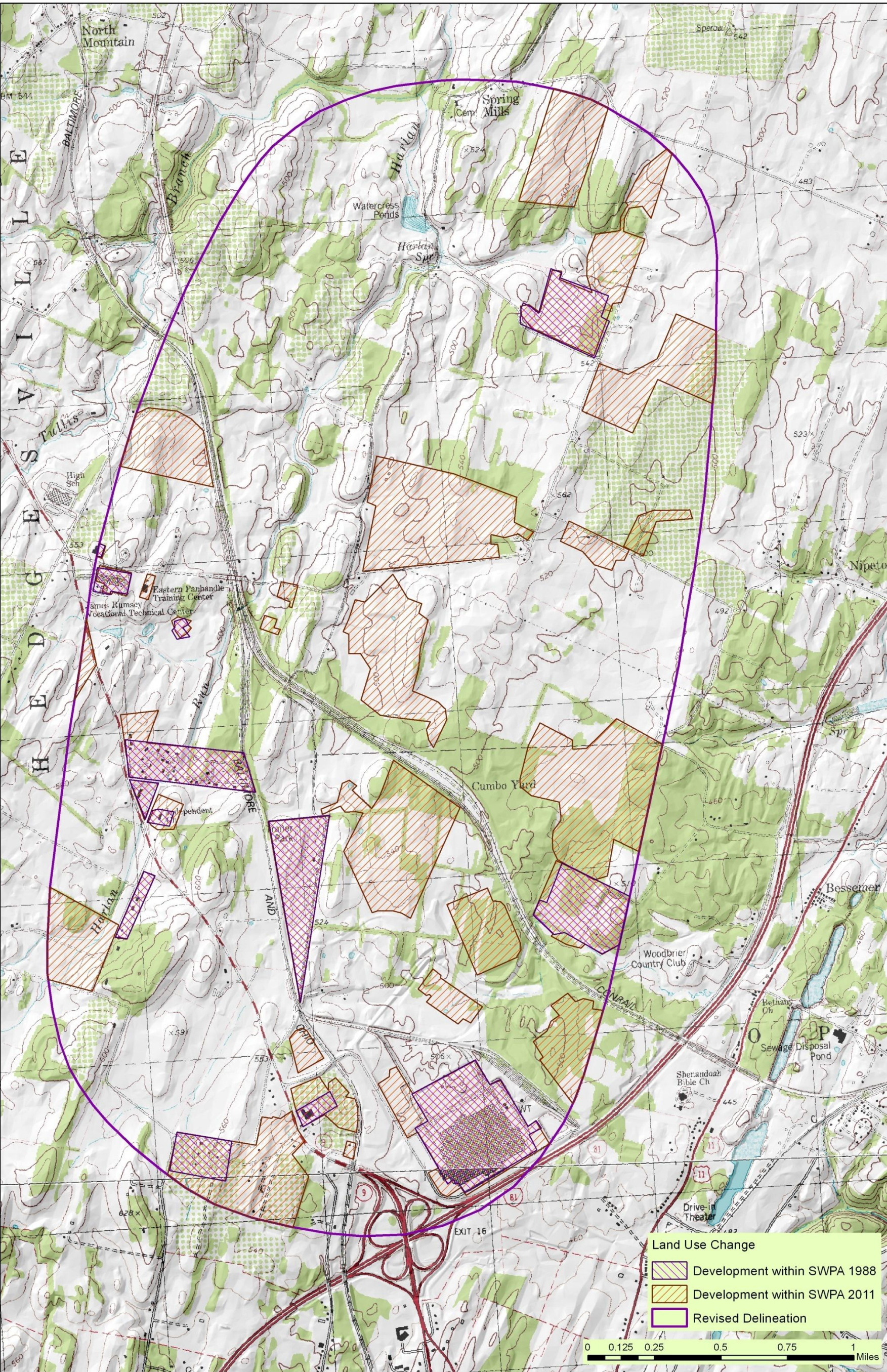
Source of Base Map (USGS 1:24,000), Geological Features, Structural Features, and Flood Hazard: WV GIS Tech Center and WVGES

Figure 3 Rocky Glen Manufactured Housing Community Source Water Protection Area with PCS Locations (2011 Aerial Photo Background)



Source of Base Map (USGS 1:24,000), Geological Features, Structural Features, and Flood Hazard: WV GIS Tech Center and WVGES

Figure 4 Rocky Glen Manufactured Housing Community Aerial Photographs (1988)



Source of Base Map (USGS 1:24,000), Geological Features, Structural Features, and Flood Hazard: WV GIS Tech Center and WVGES

Figure 5 Rocky Glen Manufactured Housing Community Land Use Change (1988-2011)



Source of Base Map (USGS 1:24,000), Geological Features, Structural Features, and Flood Hazard: WV GIS Tech Center and WVGES

Figure 6 Rocky Glen Manufactured Housing Community Geologic Map

APPENDIX A USEPA AND WVDEP REGULATED SITES

CERCLIS:

The Superfund program was created by the Comprehensive Environmental Response, Compensation, and Liability Act, amended by the Superfund Amendments and Reauthorization Act. The acts established authority for the government to respond to the release/threat of release of hazardous wastes, including cleanup and enforcement actions. Long-term cleanups at National Priority List sites last more than a year while short term /emergency cleanups are usually completed in less than a year. CERCLIS is a database used by the U.S. Environmental Protection Agency to track activities conducted under its Superfund program. CERCLIS contains data on potentially hazardous waste sites that have been reported to the EPA. Sites are investigated because of a potential for releasing hazardous substances into the environment are added to the CERCLIS inventory. EPA learns of these sites through notification by the owner, citizen complaints, state and local government identification, and investigations by EPA programs other than Superfund. Specific information is tracked for each individual site.

NPDES:

The National Pollutant Discharge Elimination System (NPDES) database identifies facilities permitted for the operation of point source discharges to surface waters in accordance with the requirements of Section 402 of the Federal Water Pollution Control Act. Point sources are discrete conveyances such as pipes or man-made ditches. Industrial, municipal, and other facilities must obtain permits if their discharges go directly to surface waters. The NPDES permit program controls water pollution by regulating point sources that discharge pollutants into public waters.

RCRA:

This database has records for all hazardous waste, generators, and transporters as defined by the Resource Conservation Recovery Act (RCRA). Hazardous waste as defined by RCRA is waste material that exhibits ignitability, corrosivity, reactivity, or toxicity. Hazardous waste comes in many shapes and forms. Chemical, metal, and furniture manufacturing are some examples of processes that create hazardous waste. RCRA tightly regulates all hazardous waste from "cradle to grave" (i.e., from manufacture to disposal).

TRI:

The Toxics Release Inventory (TRI) is a publicly available EPA database that contains information on toxic chemical releases and other waste management activities reported annually by certain covered industry groups as well as federal facilities. This inventory was established under the Emergency Planning and Community Right-to-Know Act of 1986 (EPCRA) and expanded by the Pollution Prevention Act of 1990.

WVDEP Regulated Sites

Abandoned Mine Sites:

Abandoned mine features compiled by the Office of Abandoned Mine Lands and Reclamation (AMLR) of the West Virginia Department of Environmental Protection. The AMLR eliminates damage that occurred from mining operations prior to August 3, 1977 and is funded by the AML fund. It corrects hazardous conditions and reclaims abandoned and forfeited mine sites. Typical AML features include highwalls, portals, refuse piles, and mining structures such as tipples.

AST:

Use of Above Ground Storage Tanks (AST) in West Virginia is regulated by 47CSR58. The WVDEP has developed this guidance document as a guide for the construction, installation, use, and maintenance of ASTs. **Questions concerning this document and use of ASTs should be directed to the West Virginia Department of Environmental Protection's Division of Water and Waste Management at 304-926-0495.**

Coal Dams:

Point and polygonal mining related impoundments regulated by the West Virginia Department of Environmental Protection's (WVDEP) Division of Mining and Reclamation (DMR).

LUST:

The WV DEP became the lead agency for administering the Leaking Underground Storage Tank (LUST) Program with the federal Environmental Protection Agency (EPA)'s authorization in September 1997. Since then, the WV DEP has overseen the cleanup of released regulated substances, primarily petroleum products. Such releases can originate from overfilling, spilling, or leaking tanks and piping. **To report a release from an underground storage tank system, contact the Office of Environmental Remediation at 304-238-1220, ext. 3506. After hours releases should be reported to the statewide emergency spill line at 800-642-3074.**

Solid Waste Facilities:

Municipal and non-municipal waste landfills and waste transfers stations are regulated by the West Virginia Department of Environmental Protection's (WVDEP) Division of Waste Management.

Oil and Gas Wells:

The Office of Oil and Gas maintains records on active and inactive oil & gas wells. It also manages the Abandoned Well Plugging and Reclamation Program.

UIC:

The Underground Injection Control (UIC) program is designed to ensure that fluids injected underground will not endanger drinking water sources. The Division of Water and Waste Management regulates Class 5 wells. These wells include agriculture drainage wells, improved sinkholes, industrial disposal wells, stormwater wells and septic systems that have the capacity to serve 20 or more people. The following state codes address UIC regulations; 47CSR9, 47CSR13 and 47CSR55. The Division of Mining and Reclamation oversees all mining UIC permits.

UST:

The purpose of the Underground Storage Tank (UST) Section is to regulate underground storage tanks that contain petroleum or hazardous substances to determine compliance with state rules and federal regulations. West Virginia has had full program approval from EPA since February 1988.

GLOSSARY OF TERMS

Alluvium - Sediments deposited by moving rivers.

Aquifer - A formation, group of formations, or part of a formation that contains sufficient saturated permeable materials to yield sufficient, economical quantities of water to wells and springs.

Conjunctive Delineation – In cases where a “ground water” source is designated as Ground Water Under the Direct Influence (GWUDI), an additional delineation in addition to the five (5) year time of travel/recharge delineation for ground water will be completed. The additional delineation will account for stream segments outside of the ground water delineation in cases where the area of surface influence is known or reasonably suspected. It should be noted in karst situations particularly, the surface link is not always an adjacent stream, but could come from a stream miles away. In these cases a conjunctive delineation may not always be performed.

Contamination - The addition to water of any substance or property preventing the use of reducing the usability of the water for ordinary purposes such as drinking, preparing food, bathing, washing, recreation, and cooling

Flood Plain - Any land area susceptible to inundation by floodwater from any source.

GWUDI or "Ground Water Under the Direct Influence" - is defined by the EPA as water beneath the surface of the ground with either a significant occurrence of insects or other macro organisms, algae, or large diameter pathogens such as Giardia lamblia or Cryptosporidium or other water characteristic such as turbidity, temperature, pH or conductivity.

Hydrogeologic Setting - Evaluates the sensitivity of an aquifer. The likelihood of a contaminant reaching a well or spring is a function of the ground water flows patterns, the rate of flow, the distance to the source and the hydraulic characteristics of the contaminant. The technical factors include the well(s) pumping rate and spring flow, the direction, slope and elevation of the water table, transmissivity and storativity characteristics of the aquifer, overlaying material and recharge rate for ground water systems.

100-year Flood Plain - The area adjoining a river, stream, or water course covered by water in the event of a 100 year flood.

100 -year Flood - The flood having a one percent chance of being equaled or exceeded in magnitude in any given year. Contrary to popular belief it is not a flood occurring once every 100 years.

Karst - A term denoting a formation containing soluble rocks, underground solution passages, sinkholes and springs.

Infiltration - The process of, or fluids, entering the soil and recharging aquifers rather than becoming runoff.

Maximum Contaminant Level (MCL) - Defined as the maximum permissible level of a contaminant in water, which is delivered to any user of a public water system.

Physical Integrity of the Well or Spring - This analysis evaluates and reviews the integrity of the well or spring structures needed to protect the water source from a potential contaminant source(s). It is recognized that protective well construction characteristics can prevent the occurrence of contamination even in the presence of potentially significant contaminant sources. The design and construction of a well should include casing without cracks; tight joints between lengths of casing; adequate grout between the casing and bore hole and location (floodplain or flooding area). A spring must be protected with “shoe box” type lid enclosure that is screened and locked to prevent unauthorized entry. Surface water runoff diversion and land use of the recharge area are paramount elements to evaluate. These features provide reasonable assurance that contaminants will not enter the well or spring through any pathway, and allow operators to focus on the potential for contaminants to migrate through the aquifer and enter into the well(s) or spring. However, even a well(s) and springs constructed to the most exacting standards may

lose structural integrity with time. Maintenance records of remedial improvements also will be reviewed in evaluation of integrity.

Potential Contaminant Source (PCS) - A facility or container or route of travel that could release a sufficient amount of a harmful contaminant that upon entering an aquifer or surface stream could contaminate it past the level of human health concerns.

Public Water System - is any water system or water supply which regularly supplies or offers to supply, piped water to the public for human consumption, if serving at least an average of twenty-five (25) individuals per day for at least sixty (60) days per year, or which has at least fifteen (15) service connections.

Recharge - Water entering the upper end of a groundwater flow system.

Remediation - The removal of contaminants from soil and/or ground water.

Sensitivity of the Source Water Protection Area (SWPA) - refers to the hydrologic or hydrogeologic characteristics that affect the transport of the contaminant from a source of contamination to a well or intake.

Source Water Assessment and Protection (SWAP) Program - The program established by the 1996 Amendments to the Safe Drinking Water Act (SDWA) which expanded the initial Wellhead Protection Program to all public drinking water supply systems including surface water systems. This program is to assess, preserve, and protect the source waters which are used to supply water for public drinking water supply systems and to provide a long term availability of an abundant supply of safe water in sufficient quantity for present and future citizens of the State. This program also enables the water supply owners, consumers, and others to initiate and promote actions to protect their drinking water supplies with the developed information.

Source Water Protection Area (SWPA) - refers to the area delineated by the State for a public water system, or including numerous public water systems, whether the source is ground water, surface water or both, as part of the West Virginia SWAP approved by the EPA under section 1453 of the Safe Drinking Water Act.

Susceptibility - The likelihood that a release from a PCS would contaminate and render unusable a drinking water supply such as aquifers or surface streams.

Unconfined Aquifer - An aquifer over which there is no confining layer.

Water quality - Available data will be evaluated to help direct protection activities. If the water quality impact is known, evaluating the source(s) present may help to determine the origin of the contamination and where immediate protection efforts should be focused

Well(s) - refers to ground water intakes including the well structure (i.e., casing, etc) and wellhead.

Wellhead Protection Area (WHPA) - The surface and subsurface area surrounding a water well or well field, supplying a public water system, through which contaminants are reasonably likely to move toward and reach such water well or well field. This area is delineated by the State for ground water source public water systems. The former Wellhead Protection Program (WHPP) is now part of the Source Water Assessment and Protection (SWAP) Program.