

Chapter 14



Melanoma of the Skin

Melanoma of the Skin

Incidence and Mortality by Sex and Year

West Virginia Residents 1993 – 2003

Year	Male				Female				Total			
	New Cases	Incid. Rate	Deaths	Mort. Rate	New Cases	Incid. Rate	Deaths	Mort. Rate	New Cases	Incid. Rate	Deaths	Mort. Rate
1993	106	12.5	33	3.7	98	9.2	31	2.9	204	10.5	64	3.3
1994	106	12.2	34	4.1	93	8.9	23	2.1	199	10.3	57	2.9
1995	110	12.3	30	3.5	94	9.1	25	2.2	204	10.3	55	2.8
1996	150	16.7	35	4.2	141	13.5	23	2.1	291	14.9	58	3.0
1997	159	18.4	44	4.9	128	12.2	28	2.6	287	14.6	72	3.6
1998	159	17.7	40	4.6	147	14.1	15	1.3	306	15.6	55	2.7
1999	179	19.6	32	3.5	119	11.4	37	3.3	298	14.9	69	3.4
2000	174	18.8	41	4.8	132	12.5	24	2.1	306	15.1	65	3.2
2001	195	21.2	33	3.5	136	13.2	17	1.5	331	16.5	50	2.4
2002	183	19.6	33	3.6	146	14.0	21	1.8	329	16.1	54	2.6
2003	178	18.6	50	5.4	125	11.8	26	2.2	303	14.7	76	3.7

Number of new cases excludes in situ cases.

Table 14.1

Rates are per 100,000 West Virginia residents and are age-adjusted to the 2000 U.S. standard population.

Overview

- During 1999-2003, melanoma of the skin occurred in all age groups. Incidence increased with age, with the highest age-specific incidence rate (43.9 per 100,000) among individuals 65 years of age and older. Under age 65, gender differences in incidence were unremarkable. For the 65-and-older age group, incidence was two times higher in males than in females (Figure 14.3).
- Eighty-four percent (84%) of 1999-2003 West Virginia melanomas were diagnosed at an in situ or local stage. Stage was not reported for 7% of melanomas (Figure 14.4).
- Mortality rates from melanoma in West Virginia were not significantly different from the national average (Appendix B).

Risk Factors

- Risk is increased by excessive exposure to ultraviolet radiation; fair complexion; occupational exposure to coal tar, pitch, creosote, arsenic compounds, or radium; family history; and multiple nevi or atypical nevi (ACS, 2006a).

Prevention

- Avoid direct sun exposure when ultraviolet rays are strongest (10 a.m. to 4 p.m.). Wear hats, protective clothing, and sunscreens (15 SPF or higher) when potentially exposed. This is especially important for children.
- Inspect skin regularly and have suspicious skin lesions evaluated by a medical provider.

Melanoma of the Skin

Incidence Rates*, Age-Adjusted

West Virginia Residents 1993 – 2003, U.S. Residents 1993 – 2002

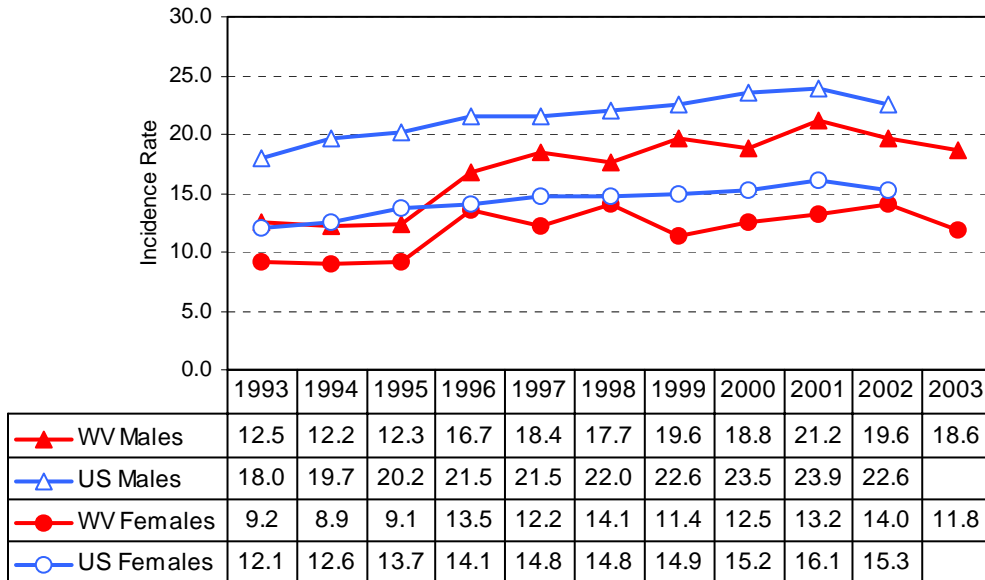


Figure 14.1

* Rates are per 100,000 and are age-adjusted to the 2000 U.S. standard population. U.S. rates are from SEER (Ries et al., 2005).

Melanoma of the Skin

Mortality Rates*, Age-Adjusted

West Virginia Residents 1993 – 2003, U.S. Residents 1993 – 2002

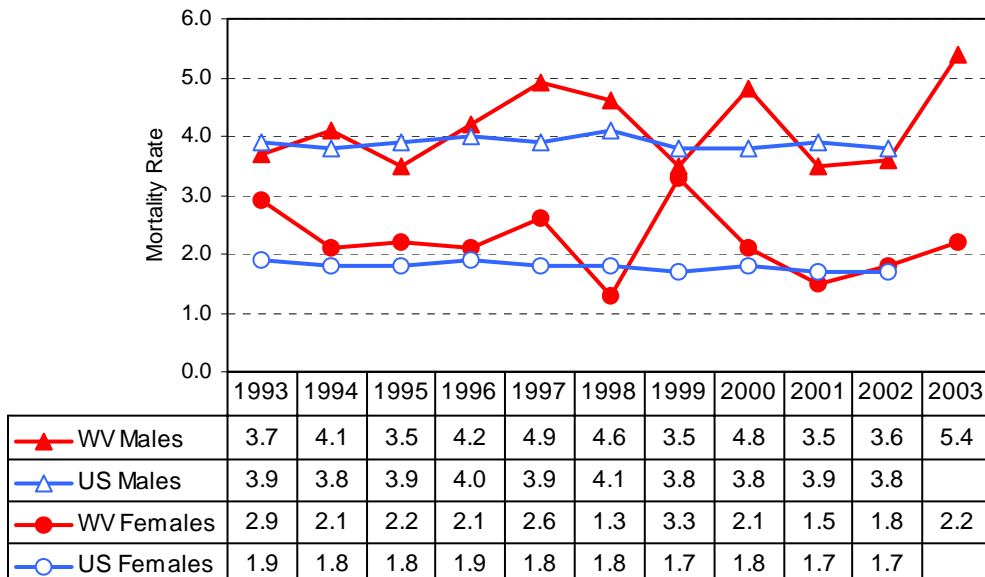


Figure 14.2

* Rates are per 100,000 and are age-adjusted to the 2000 U.S. standard population. U.S. rates are from SEER (Ries et al., 2005).

Melanoma of the Skin

Incidence Rates*, Age-Specific West Virginia Residents 1999 – 2003

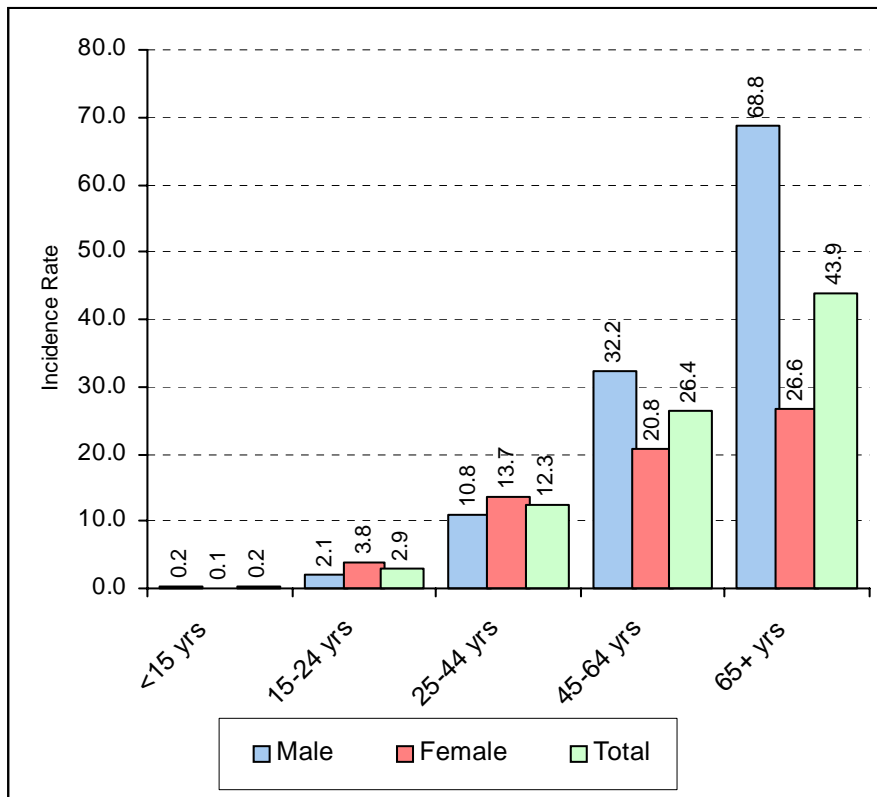


Figure 14.3

*Five-year average annual rate per 100,000 West Virginia residents

Melanoma of the Skin Most Frequent Histologies West Virginia Residents 1999 – 2003

ICD-O Code	Histology	% of Invasive Cases
8720	Malignant Melanoma	52.0
8743	Superficial Spreading Melanoma	27.7
8721	Nodular Melanoma	9.0
8742	Melanoma in Hutchinson's Melanotic Freckle	6.4
8772	Spindle Cell Melanoma	1.4

Table 14.2

Melanoma of the Skin Stage of Disease at Diagnosis West Virginia Residents 1999 – 2003

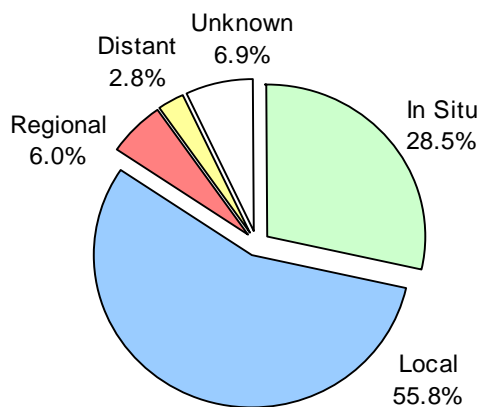
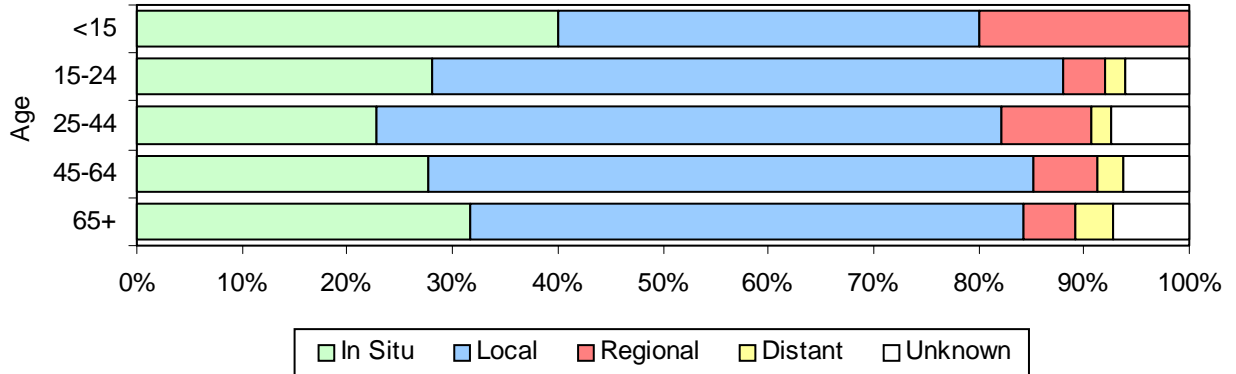


Figure 14.4

Melanoma of the Skin

Stage of Disease at Diagnosis by Age

West Virginia Residents 1999 – 2003



Age	In Situ		Local		Regional		Distant		Unknown		Total	
	#	%	#	%	#	%	#	%	#	%	#	%
<15	~	~	~	~	~	~	~	~	~	~	5	100.0%
15-24	~	~	~	~	~	~	~	~	~	~	50	100.0%
25-44	89	22.8%	232	59.3%	34	8.7%	7	1.8%	29	7.4%	391	100.0%
45-64	237	27.7%	492	57.5%	51	6.0%	21	2.5%	54	6.3%	855	100.0%
65+	283	31.8%	467	52.4%	44	4.9%	32	3.6%	65	7.3%	891	100.0%
Total	625	28.5%	1,223	55.8%	132	6.0%	61	2.8%	151	6.9%	2,192	100.0%

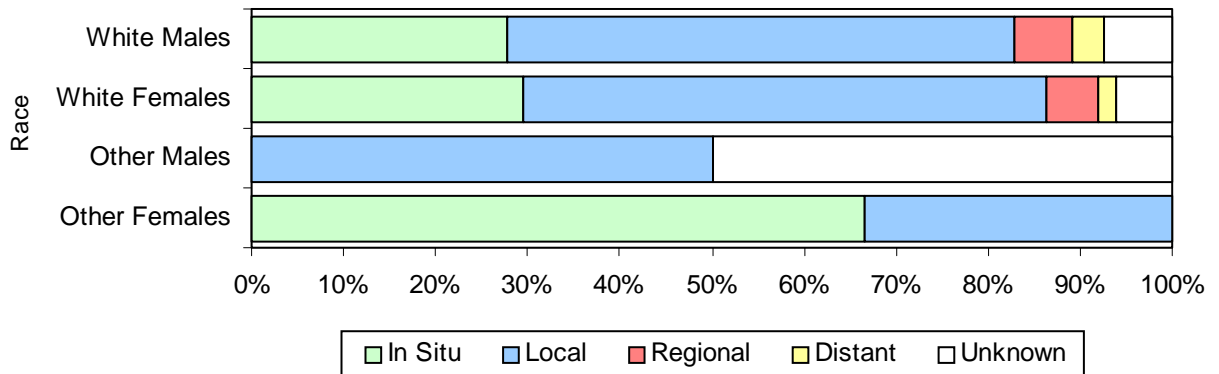
~ Suppressed due to small cell size
Total may not add to 100% due to rounding.

Figure 14.5

Melanoma of the Skin

Stage of Disease at Diagnosis by Race and Sex

West Virginia Residents 1999 – 2003



Race/Sex	In Situ		Local		Regional		Distant		Unknown		Total	
	#	%	#	%	#	%	#	%	#	%	#	%
White Males	349	27.8%	691	55.0%	80	6.4%	43	3.4%	93	7.4%	1,256	100.0%
White Females	274	29.4%	530	56.9%	52	5.6%	18	1.9%	57	6.1%	931	100.0%
Other Males	~	~	~	~	~	~	~	~	~	~	~	~
Other Females	~	~	~	~	~	~	~	~	~	~	~	~
Total	625	28.5%	1,223	55.8%	132	6.0%	61	2.8%	151	6.9%	2,192	100.0%

~ Suppressed due to small cell size
Total may not add to 100% due to rounding.

Figure 14.6