

# ***West Virginia CARESS***

***Congenital Abnormalities Registry, Education  
and Surveillance System***

Melissa A. Baker, MA

Office of Maternal, Child and Family Health  
Research, Evaluation and Planning Division

# Patent Ductus Arteriosis (PDA)

---

- Occurs when a blood vessel that is normal while a baby is in the womb fails to close after the baby is born.
- Cause is not known.
- Affects 1 in 2000 babies born each year.
- More common in premature infants.

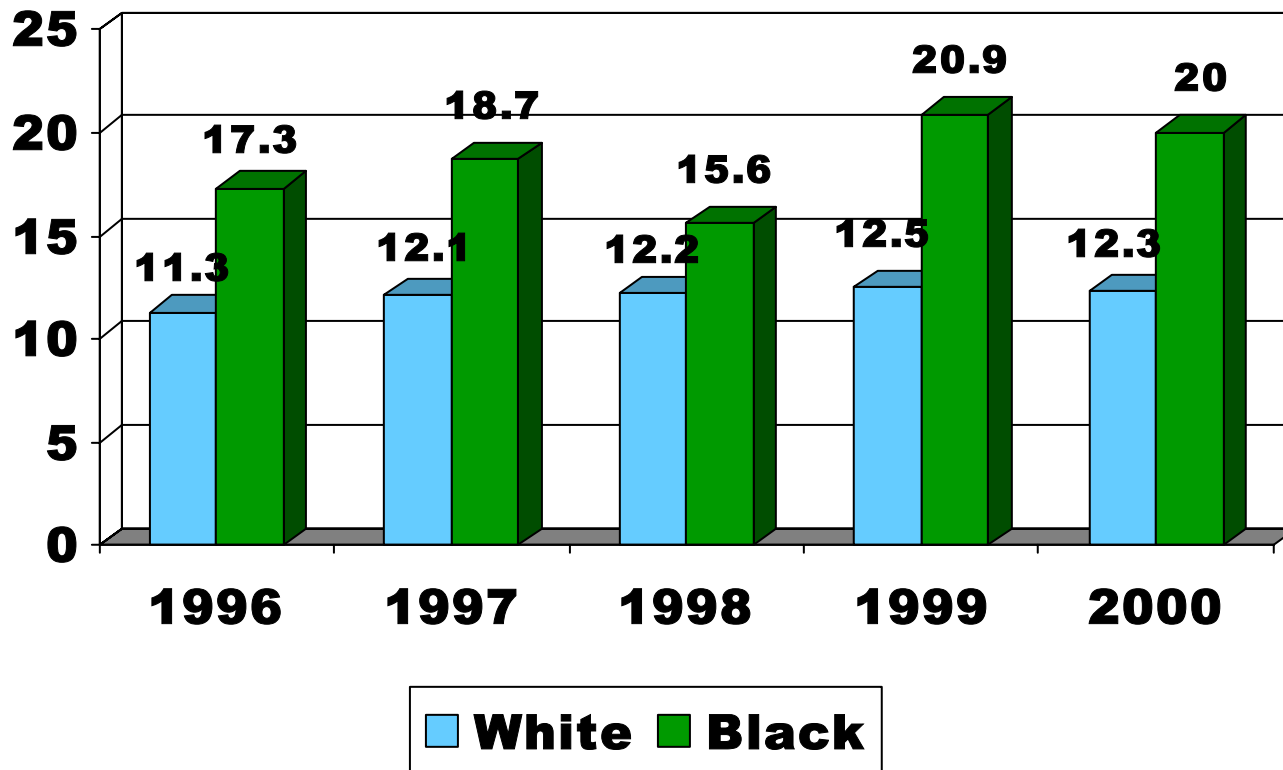
# West Virginia Data

---

- 1996 – 2000
- CARESS and Vital Statistics
- PDA
- Gestational Age
- Race

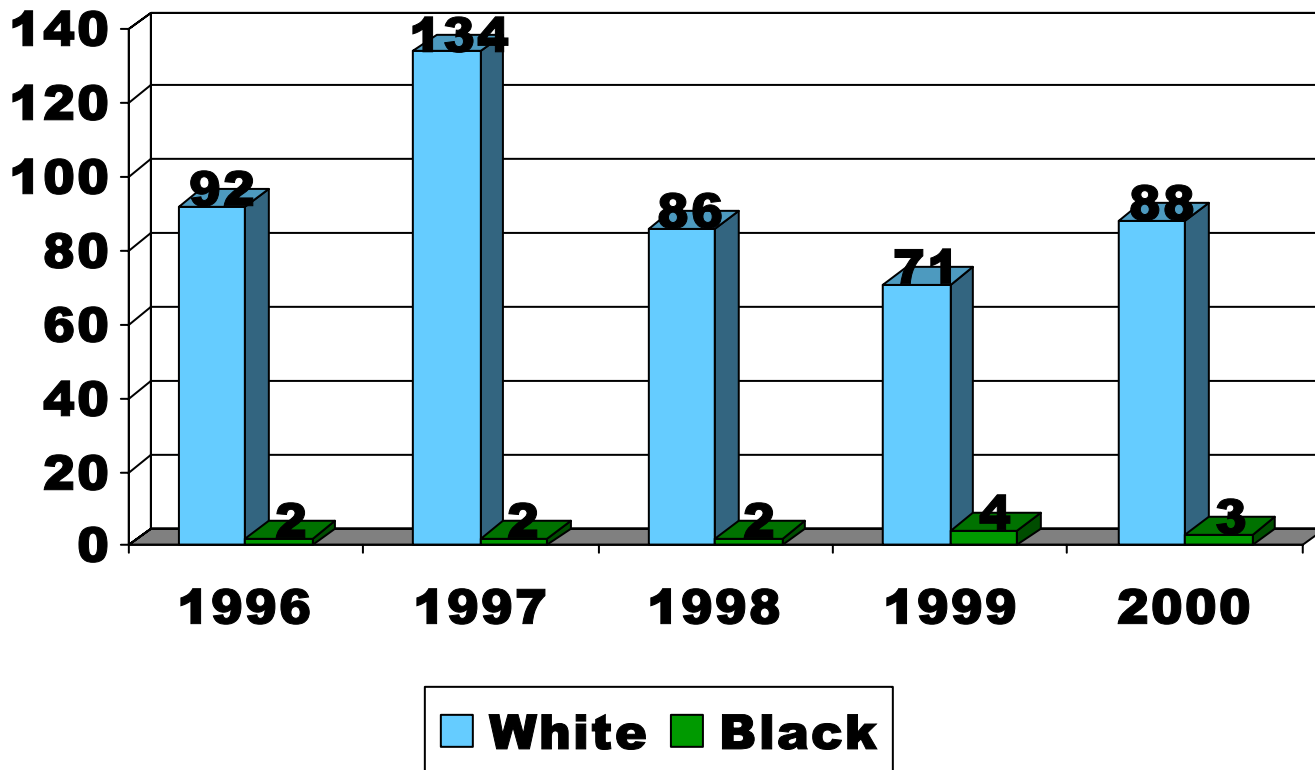
# **% Preterm Births in WV**

---



# WV PDA Cases by Race

---

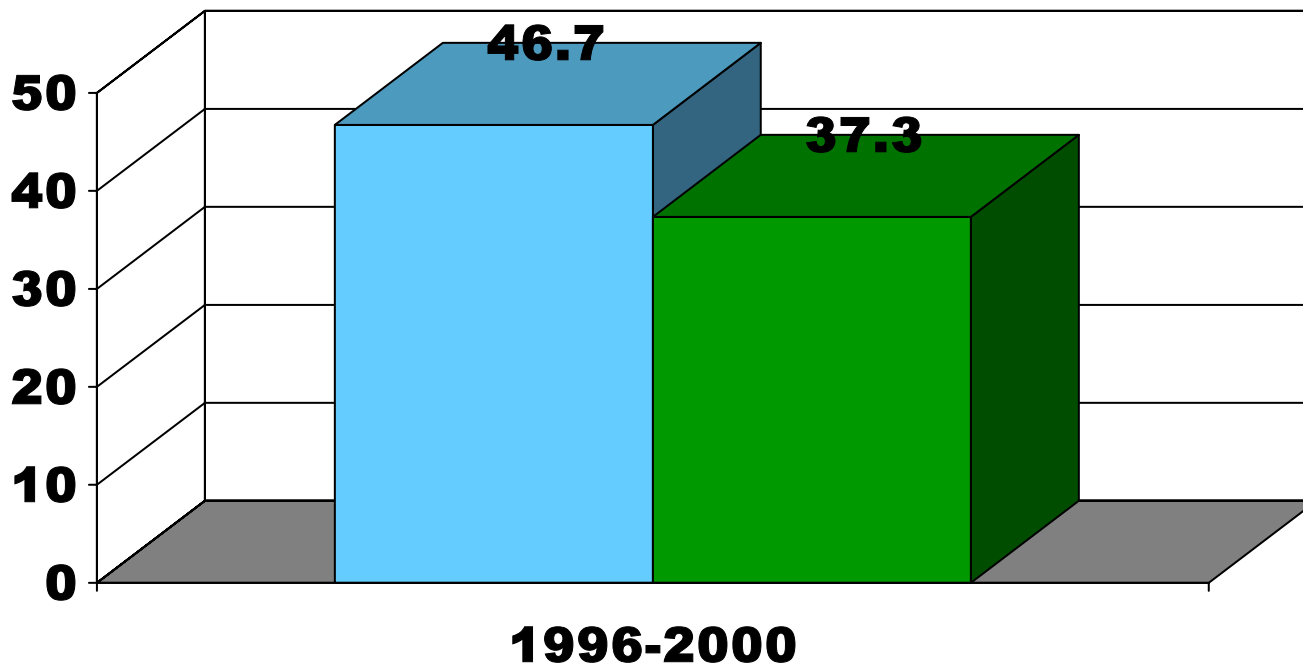


# WV PDA Rates by Race

## 1996-2000

(per 10,000)

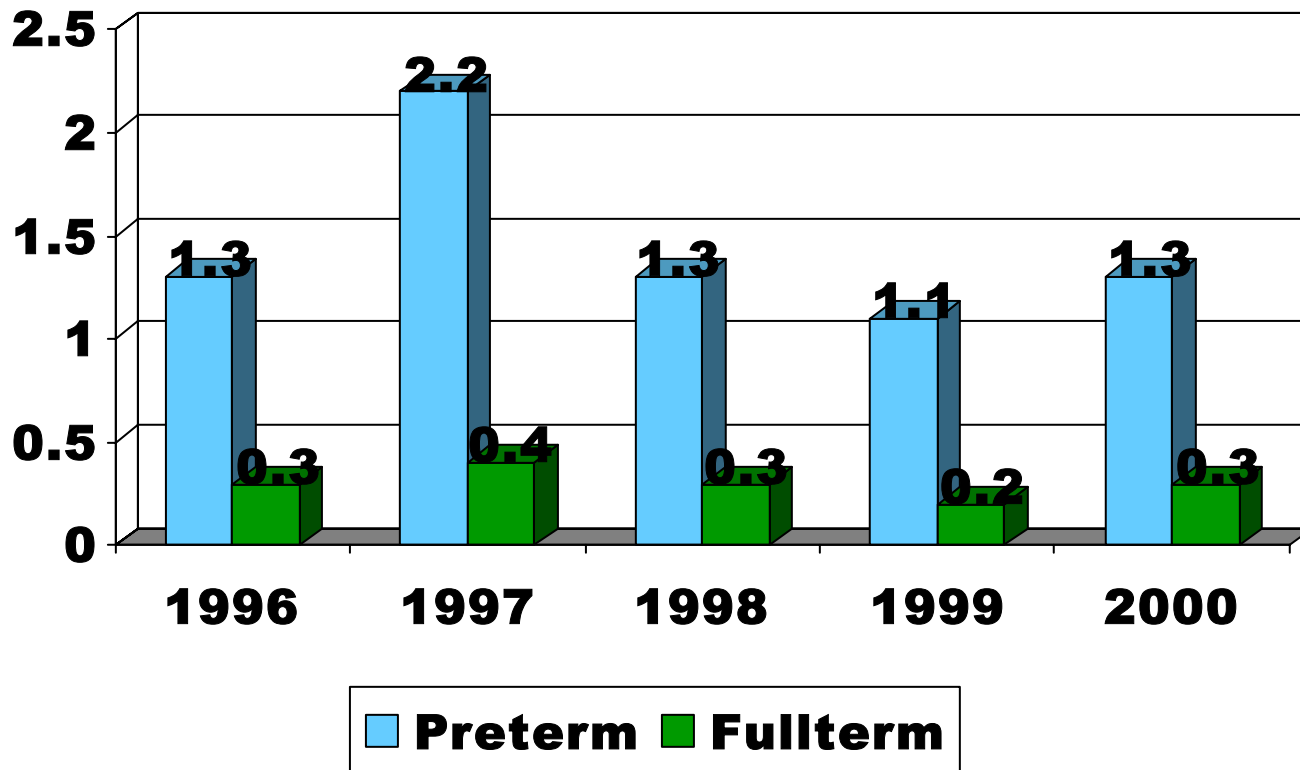
---



■ White ■ Black

# WV PDA Percentages by Gestational Age

---



## Conclusions

---

- The occurrence of PDA and the prevalence of preterm births have not declined in West Virginia.
- Preterm births can be reduced with prenatal counseling, education and care.
- Reduction in preterm births could result in an overall reduction in infant illness, disability and death.

***PATENT DUCTUS  
ARTERIOSIS  
AND  
PRETERM BIRTHS  
WEST VIRGINIA  
1996 - 2000***