

Chapter 19

Cancer of the Pancreas



Cancer of the Pancreas

Incidence and Mortality by Sex and Year

West Virginia Residents 1993 – 2001

Year	Male				Female				Total			
	New Cases	Incid. Rate	Deaths	Mort. Rate	New Cases	Incid. Rate	Deaths	Mort. Rate	New Cases	Incid. Rate	Deaths	Mort. Rate
1993	78	8.9	90	10.8	98	8.3	111	9.3	176	8.5	201	10.0
1994	90	10.6	96	11.3	109	8.8	129	10.4	199	9.5	225	10.8
1995	97	11.2	87	10.2	115	9.3	92	7.4	212	10.2	179	8.6
1996	93	11.0	109	13.1	85	6.8	110	8.8	178	8.5	219	10.5
1997	115	13.4	97	11.2	113	9.4	90	7.3	228	11.0	187	9.0
1998	107	12.5	105	12.5	90	7.3	98	8.1	197	9.3	203	9.8
1999	96	10.6	91	10.5	83	6.8	82	6.7	179	8.4	173	8.2
2000	104	11.6	99	11.1	101	7.9	116	9.3	205	9.5	215	10.1
2001	112	12.0	101	11.2	97	7.8	80	6.6	209	9.7	181	8.5

Number of new cases excludes in situ cases.

Rates are per 100,000 West Virginia residents and are age-adjusted to the 2000 U.S. standard population.

Table 19.1

Overview

- In 1997-2001, cancer of the pancreas rarely occurred in individuals less than 45 years of age. Incidence increased markedly with age (Figure 19.3).
- Unfortunately, most cancers of the pancreas (64%) were diagnosed when disease was regional or distant. A high proportion of pancreatic cancers were reported as stage unknown at time of diagnosis (Figure 19.4).
- In 1997-2001, cancer of the pancreas was the fourth leading cause of cancer-related mortality for men and fifth for women in West Virginia (Figures 1.3 and 1.4).
- Data from 1996 through 2000 for age-adjusted mortality from pancreatic cancer ranked West Virginia lower than the national average for this disease (Appendix B).

Risk Factors

- Risk factors for this disease are not yet fully understood.
- Incidence of cancer of the pancreas among individuals who smoke is more than twice that of non-smokers. Incidence is also higher in countries with high dietary fat intake.
- Diabetes and chronic pancreatitis are risk factors for pancreatic cancer.

Prevention

- Little is known about the prevention of pancreatic cancer. Although the causal relationship between smoking and pancreatic cancer is not fully clear, individuals should be encouraged to discontinue or not initiate tobacco use for this and other health reasons.

Cancer of the Pancreas

Incidence Rates*, Age-Adjusted

West Virginia Residents 1993 – 2001, U.S. Residents 1993 – 2000

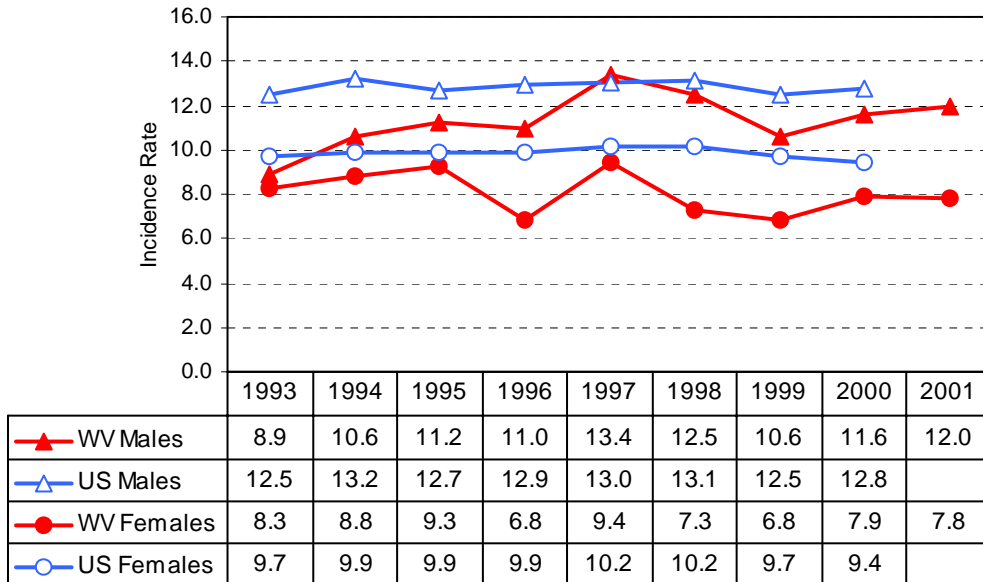


Figure 19.1

*Rates are per 100,000 and are age-adjusted to the 2000 U.S. standard population.
U.S. rates are from SEER (Ries et al., 2003).

Cancer of the Pancreas

Mortality Rates*, Age-Adjusted

West Virginia Residents 1993 – 2001, U.S. Residents 1993 – 2000

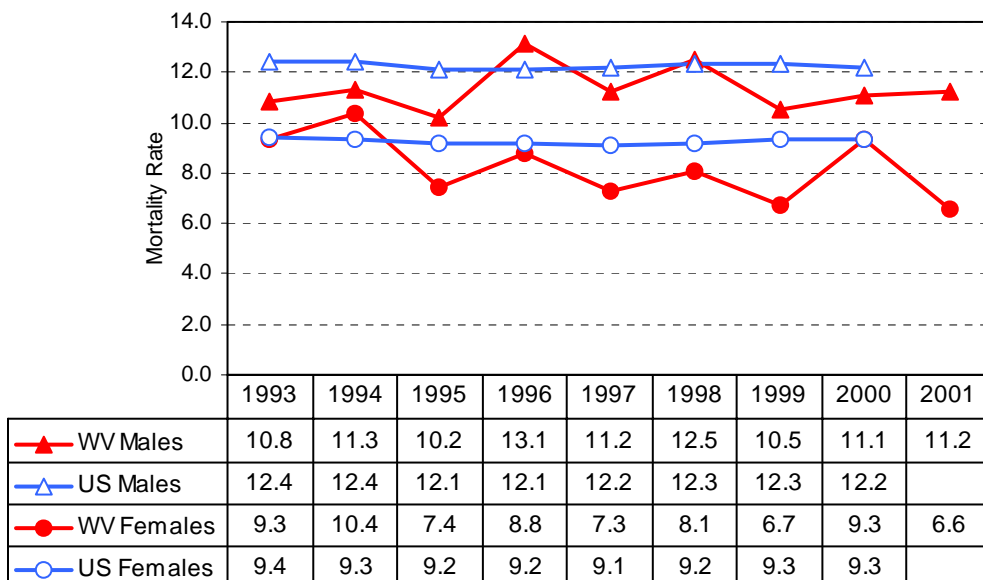


Figure 19.2

*Rates are per 100,000 and are age-adjusted to the 2000 U.S. standard population.
U.S. rates are from SEER (Ries et al., 2003).

Cancer of the Pancreas

Incidence Rates*, Age-Specific West Virginia Residents 1997 – 2001

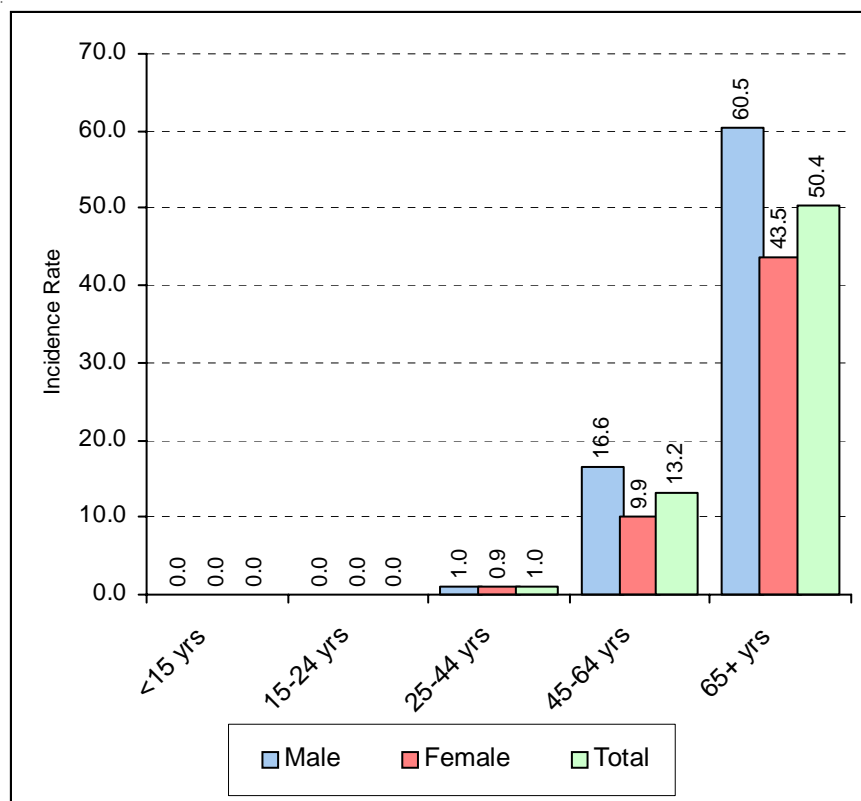


Figure 19.3

*Five-year average annual rate per 100,000 West Virginia residents

Cancer of the Pancreas

Most Frequent Histologies West Virginia Residents 1997 – 2001

ICD-O Code	Histology	% of Invasive Cases
8140	Adenocarcinoma	48.9
8010	Carcinoma	18.5
8000	Malignant Neoplasm	18.0
8500	Infiltrating Duct Carcinoma	4.7
8246	Neuroendocrine Carcinoma	1.6
8481	Mucin-producing Adenocarcinoma	1.5
8480	Mucinous Adenocarcinoma	1.3

Table 19.2

Cancer of the Pancreas

Stage of Disease at Diagnosis West Virginia Residents 1997 – 2001

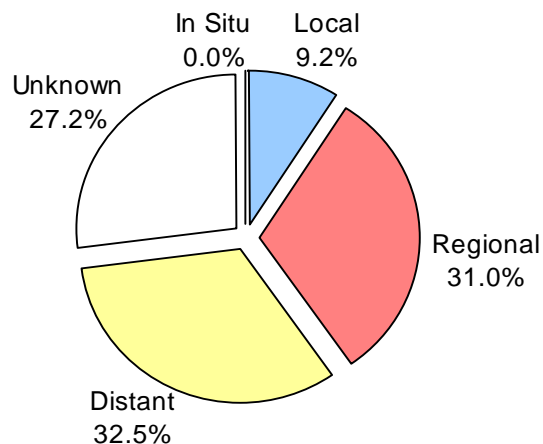


Figure 19.4

Cancer of the Pancreas

Stage of Disease at Diagnosis by Age

West Virginia Residents 1997 – 2001

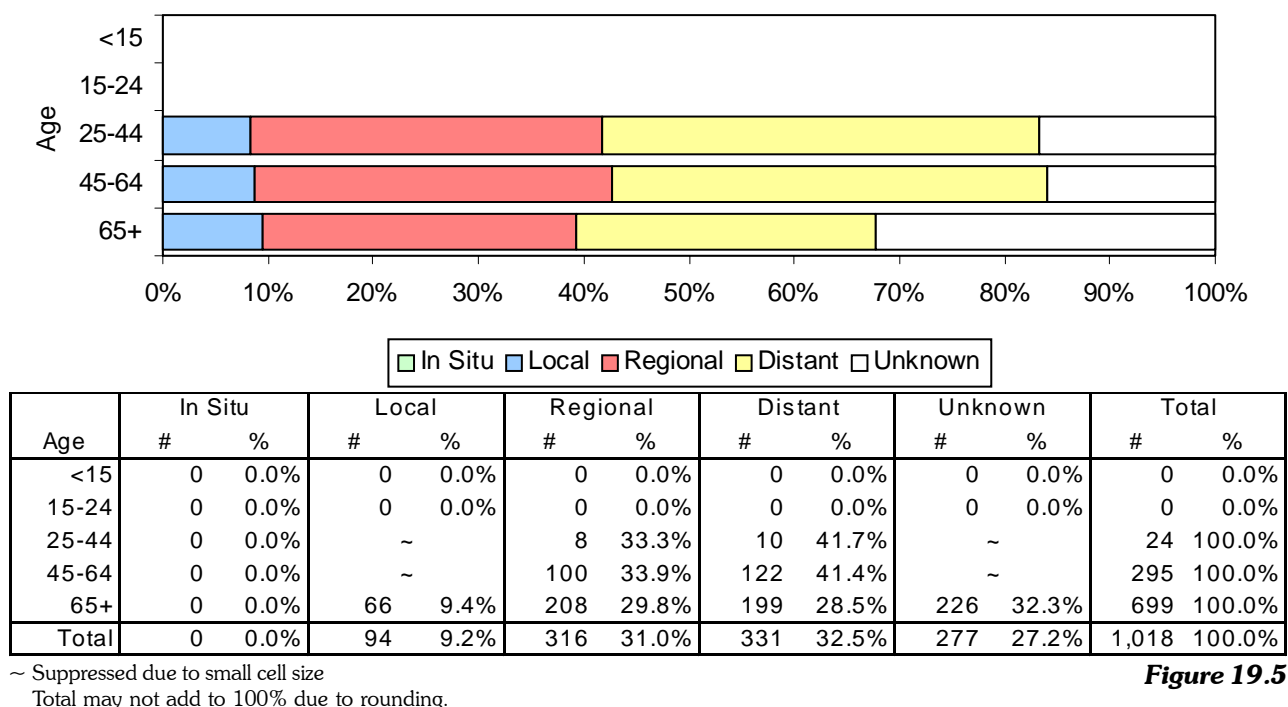


Figure 19.5

Cancer of the Pancreas

Stage of Disease at Diagnosis by Race and Sex

West Virginia Residents 1997 – 2001

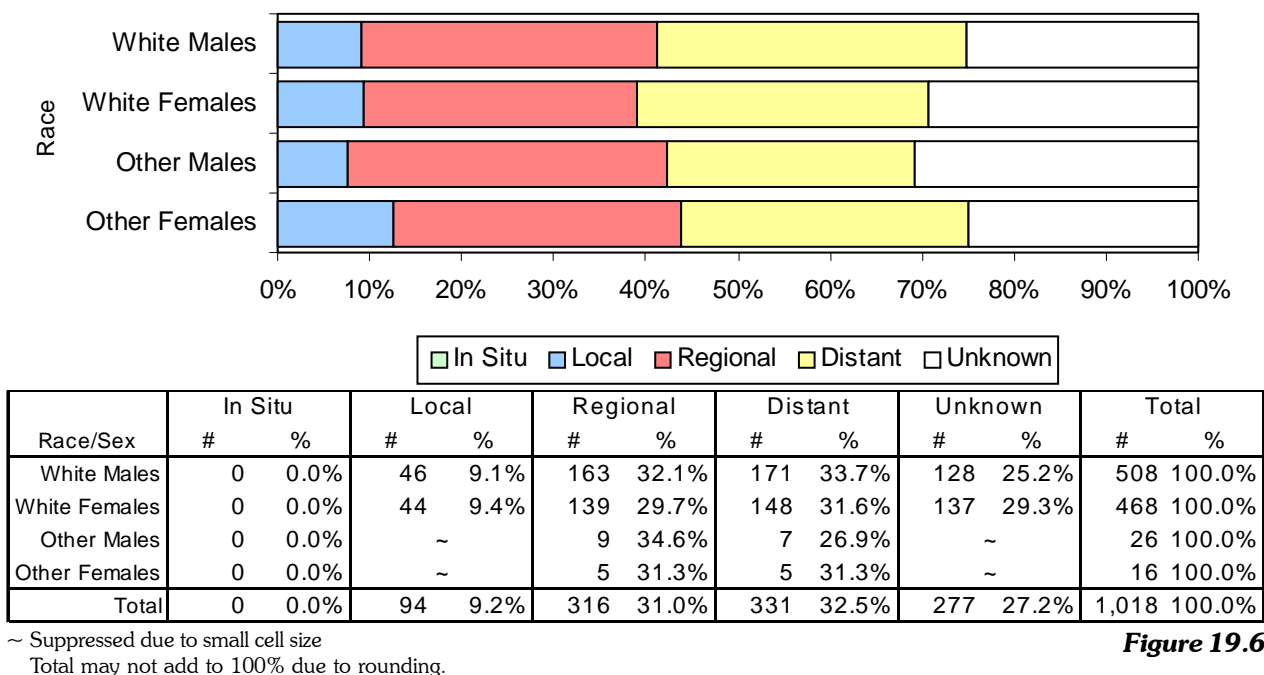


Figure 19.6