

Chapter 15

Multiple Myeloma



Multiple Myeloma

Incidence and Mortality by Sex and Year

West Virginia Residents 1993 – 2001

Year	Male				Female				Total			
	New Cases	Incid. Rate	Deaths	Mort. Rate	New Cases	Incid. Rate	Deaths	Mort. Rate	New Cases	Incid. Rate	Deaths	Mort. Rate
1993	58	7.0	42	5.0	50	4.2	35	2.9	108	5.3	77	3.8
1994	62	7.3	52	6.2	54	4.7	35	2.9	116	5.7	87	4.2
1995	72	8.5	48	5.9	56	4.5	38	3.1	128	6.1	86	4.2
1996	65	7.6	50	6.0	48	4.1	42	3.4	113	5.5	92	4.4
1997	57	6.5	42	4.9	47	3.9	36	2.9	104	4.9	78	3.8
1998	67	7.5	53	6.1	51	4.1	31	2.5	118	5.6	84	4.0
1999	47	5.3	40	4.7	47	3.8	50	4.0	94	4.4	90	4.2
2000	39	4.2	31	3.5	53	4.3	31	2.5	92	4.3	62	2.9
2001	63	6.9	39	4.5	50	4.1	29	2.4	113	5.2	68	3.2

Rates are per 100,000 West Virginia residents and are age-adjusted to the 2000 U.S. standard population.

Table 15.1

Overview

- About 100 West Virginians were diagnosed with multiple myeloma each year from 1993 through 2001. Like many other cancers, more men were diagnosed with this disease than women (Table 15.1).
- In 1997-2001, almost all new cases occurred after the age of 40. Incidence increased sharply with age. The age-specific incidence for individuals aged 65 and older was nearly five times that of 45-64 year olds (Figure 15.3).
- About 80 West Virginians died of this disease each year from 1993 through 2001 (Table 15.1). As with incidence, mortality from multiple myeloma increased with increasing age and occurred more commonly in men than in women.

Risk Factors

- Multiple myeloma is about twice as common in blacks as in whites. The reason for this is unknown.
- Little is known about the etiology of multiple myeloma.

Prevention

- No effective methods of early detection or prevention are currently available.

Multiple Myeloma

Incidence Rates*, Age-Adjusted

West Virginia Residents 1993 – 2001, U.S. Residents 1993 – 2000

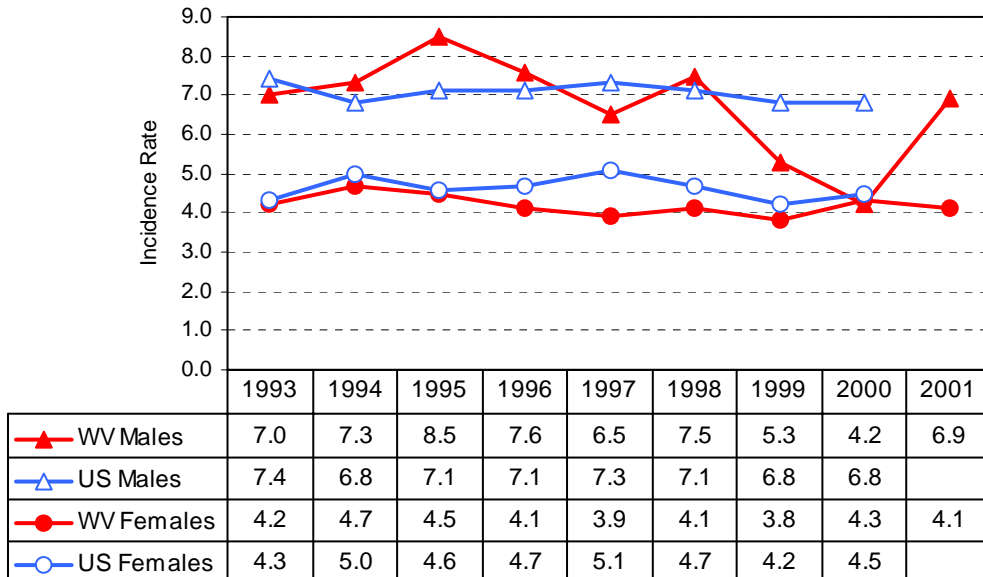


Figure 15.1

*Rates are per 100,000 and are age-adjusted to the 2000 U.S. standard population.
U.S. rates are from SEER (Ries et al., 2003).

Multiple Myeloma

Mortality Rates*, Age-Adjusted

West Virginia Residents 1993 – 2001, U.S. Residents 1993 – 2000

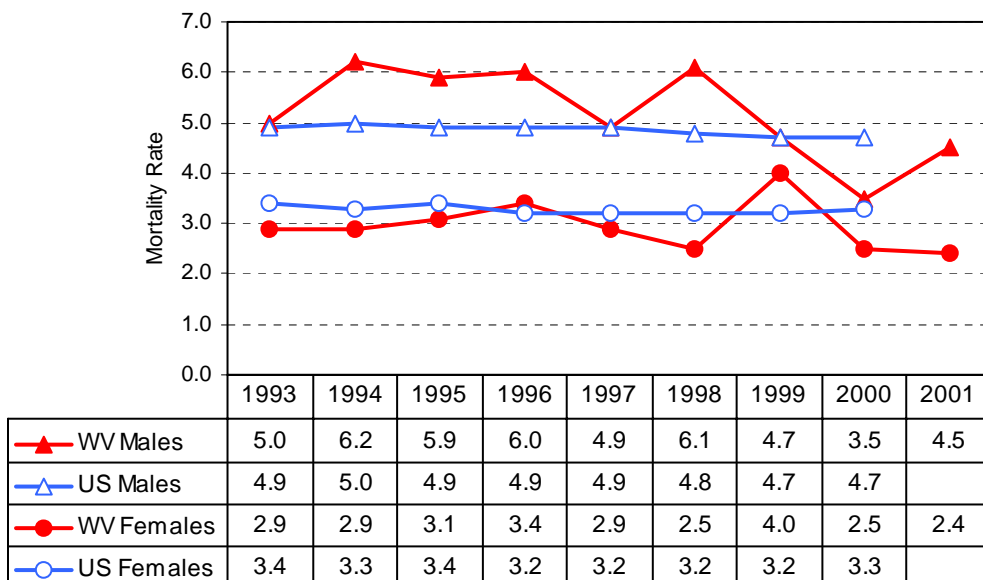


Figure 15.2

*Rates are per 100,000 and are age-adjusted to the 2000 U.S. standard population.
U.S. rates are from SEER (Ries et al., 2003).

Multiple Myeloma

Incidence Rates*, Age-Specific
West Virginia Residents 1997 – 2001

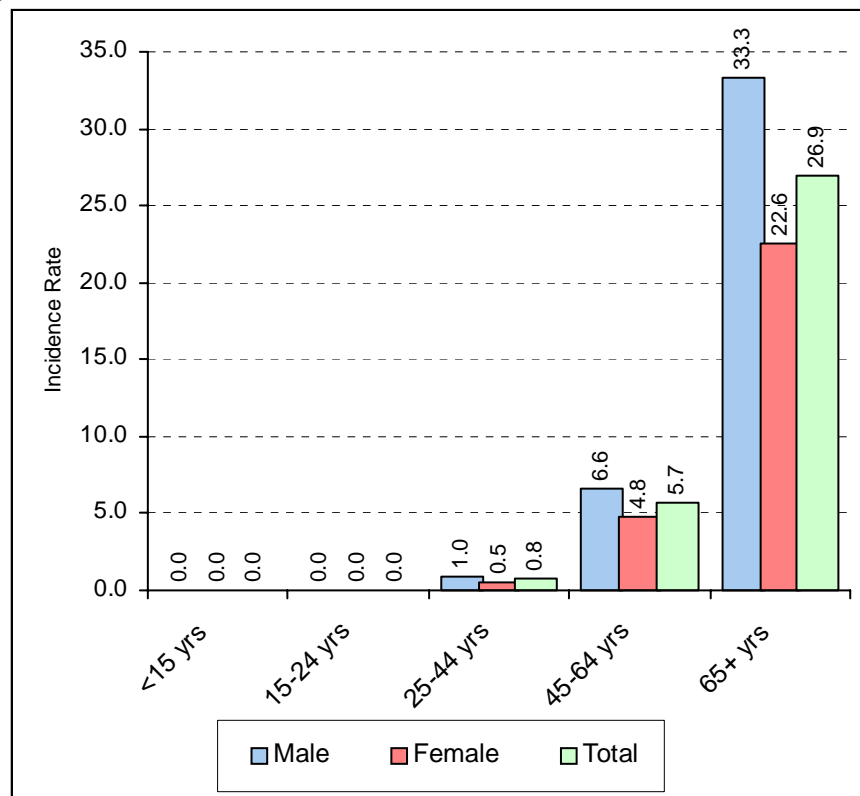


Figure 15.3

*Five-year average annual rate per 100,000 West Virginia residents