

Chapter 14

Melanoma of the Skin



Melanoma of the Skin

Incidence and Mortality by Sex and Year

West Virginia Residents 1993 – 2001

Year	Male				Female				Total			
	New Cases	Incid. Rate	Deaths	Mort. Rate	New Cases	Incid. Rate	Deaths	Mort. Rate	New Cases	Incid. Rate	Deaths	Mort. Rate
1993	106	12.5	33	3.7	97	9.1	31	2.9	203	10.4	64	3.3
1994	105	12.1	34	4.1	93	8.9	23	2.1	198	10.2	57	2.9
1995	109	12.2	30	3.5	94	9.1	25	2.2	203	10.3	55	2.8
1996	149	16.5	35	4.2	139	13.3	23	2.1	288	14.7	58	3.0
1997	160	18.5	44	4.9	128	12.2	28	2.6	288	14.6	72	3.6
1998	159	17.7	40	4.6	147	14.1	15	1.3	306	15.6	55	2.7
1999	176	19.3	32	3.5	119	11.4	37	3.3	295	14.7	69	3.4
2000	174	18.8	41	4.8	132	12.5	24	2.1	306	15.1	65	3.2
2001	180	19.5	33	3.5	134	12.9	17	1.5	314	15.7	50	2.5

Number of new cases excludes in situ cases.

Rates are per 100,000 West Virginia residents and are age-adjusted to the 2000 U.S. standard population.

Table 14.1

Overview

- During 1997-2001, melanoma of the skin occurred in all age groups. Incidence increased with age, with the highest age-specific incidence rate (43.3 per 100,000) among individuals 65 years of age and older. Under age 65, gender differences in incidence were unremarkable. For the 65-and-older age group, incidence was two times higher in males than in females (Figure 14.3).
- Eighty-five percent (85%) of 1997-2001 West Virginia melanomas were diagnosed at an in situ or local stage. Stage was not reported for 7% of melanomas (Figure 14.4).
- Mortality rates from melanoma in West Virginia were not significantly different from the national average (Appendix B).

Risk Factors

- Risk is increased by excessive exposure to ultraviolet radiation; fair complexion; occupational exposure to coal tar, pitch, creosote, arsenic compounds, or radium; family history; and multiple nevi or atypical nevi (ACS, 2003a).

Prevention

- Avoid direct sun exposure when ultraviolet rays are strongest (10 a.m. to 4 p.m.). Wear hats, protective clothing, and sunscreens (15 SPF or higher) when potentially exposed. This is especially important for children.
- Inspect skin regularly and have suspicious skin lesions evaluated by a medical provider.

Melanoma of the Skin

Incidence Rates*, Age-Adjusted

West Virginia Residents 1993 – 2001, U.S. Residents 1993 – 2000

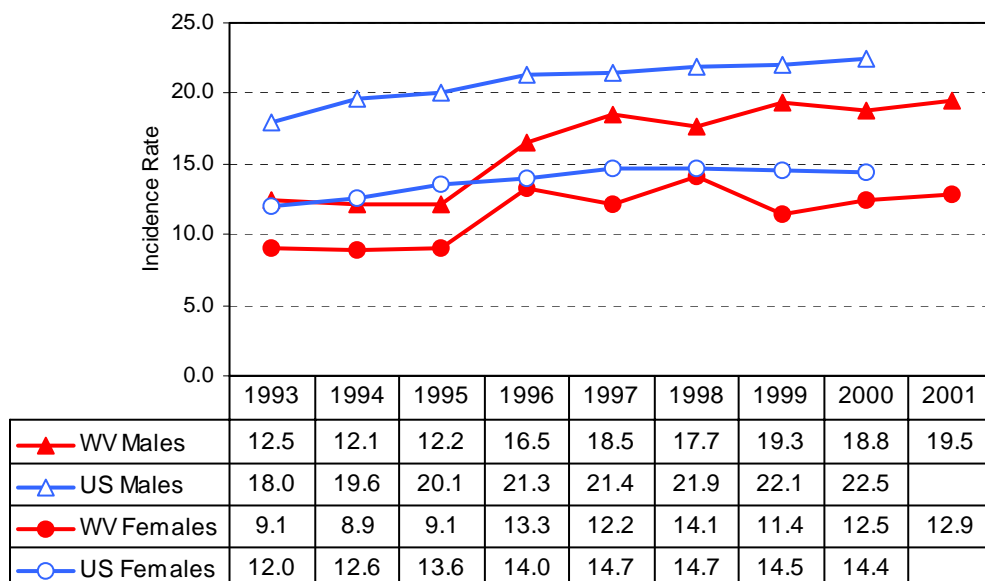


Figure 14.1

*Rates are per 100,000 and are age-adjusted to the 2000 U.S. standard population.
U.S. rates are from SEER (Ries et al., 2003).

Melanoma of the Skin

Mortality Rates*, Age-Adjusted

West Virginia Residents 1993 – 2001, U.S. Residents 1993 – 2000

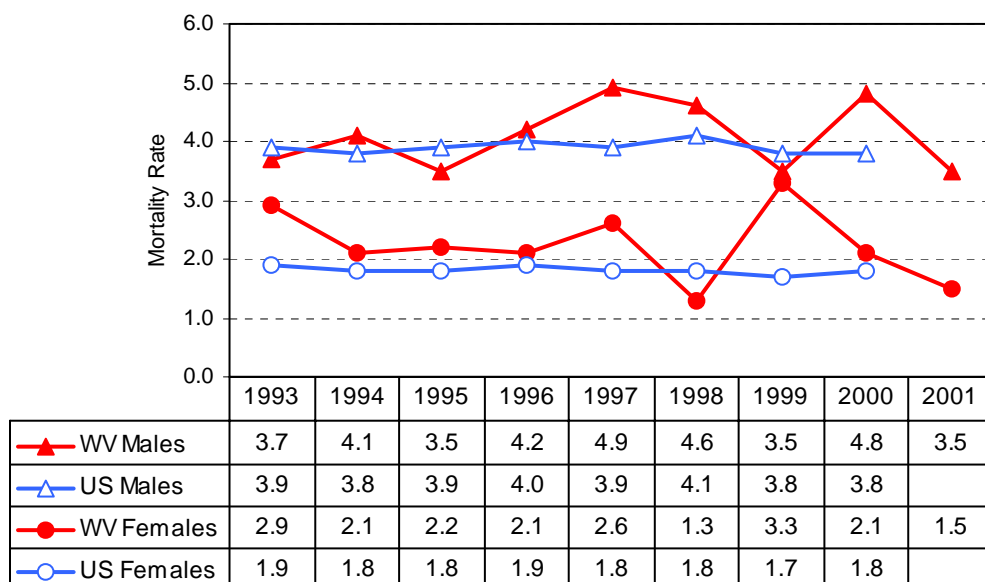


Figure 14.2

*Rates are per 100,000 and are age-adjusted to the 2000 U.S. standard population.
U.S. rates are from SEER (Ries et al., 2003).

Melanoma of the Skin

Incidence Rates*, Age-Specific West Virginia Residents 1997 – 2001

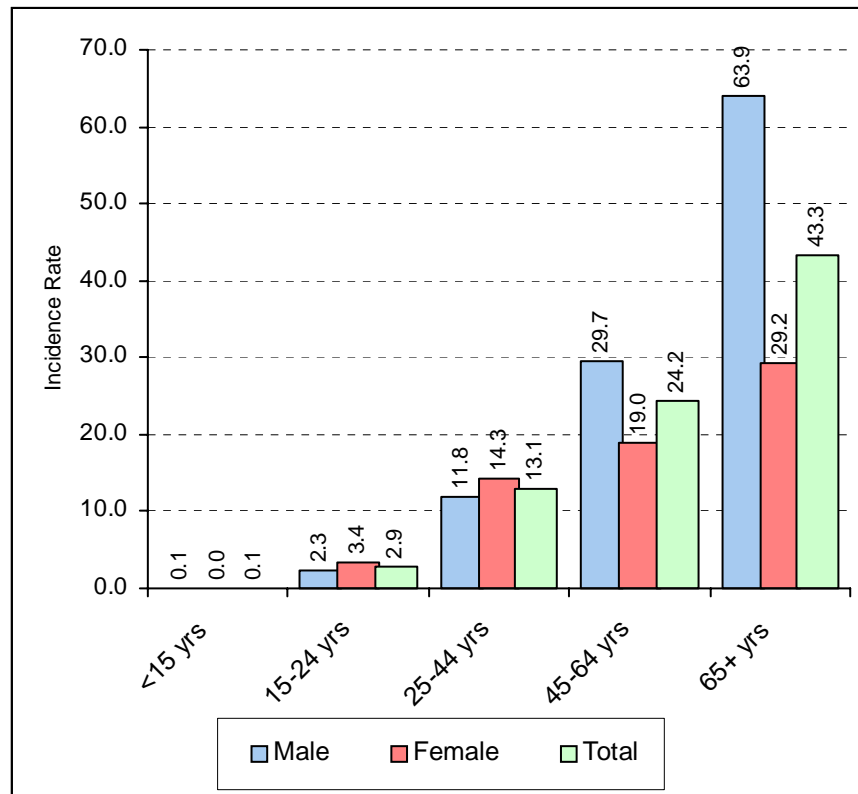


Figure 14.3

*Five-year average annual rate per 100,000 West Virginia residents

Melanoma of the Skin

Most Frequent Histologies West Virginia Residents 1997 – 2001

ICD-O Code	Histology	% of Invasive Cases
8720	Malignant Melanoma	49.8
8743	Superficial Spreading Melanoma	28.9
8721	Nodular Melanoma	8.4
8742	Melanoma in Hutchinson's Melanotic Freckle	7.9
8772	Spindle Cell Melanoma	1.3
8745	Desmoplastic Melanoma	1.0

Table 14.2

Melanoma of the Skin

Stage of Disease at Diagnosis West Virginia Residents 1997 – 2001

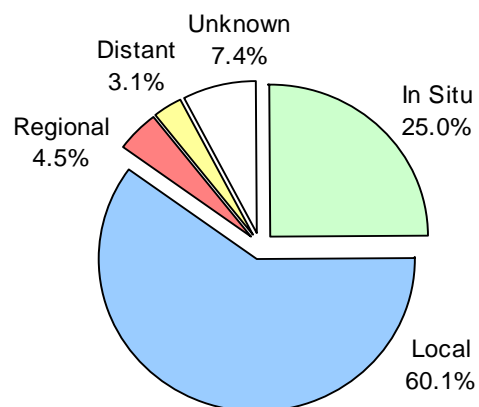
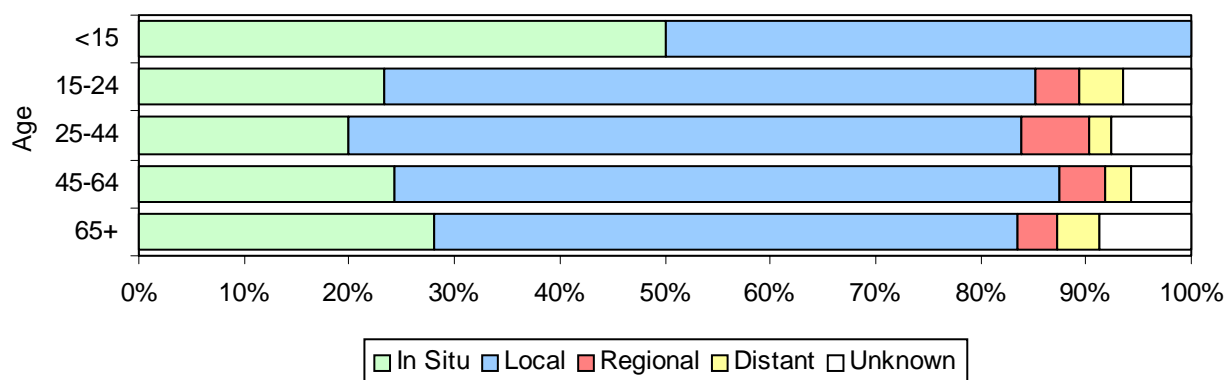


Figure 14.4

Melanoma of the Skin

Stage of Disease at Diagnosis by Age

West Virginia Residents 1997 – 2001



Age	In Situ		Local		Regional		Distant		Unknown		Total	
	#	%	#	%	#	%	#	%	#	%	#	%
<15	~		~		0	0.0%	0	0.0%	0	0.0%	~	100.0%
15-24	~		~		~		~		~		~	100.0%
25-44	82	20.0%	263	64.0%	~		~		~		411	100.0%
45-64	174	24.3%	453	63.3%	30	4.2%	18	2.5%	41	5.7%	716	100.0%
65+	234	28.1%	462	55.4%	32	3.8%	33	4.0%	73	8.8%	834	100.0%
Total	502	25.0%	1,208	60.1%	90	4.5%	62	3.1%	148	7.4%	2,010	100.0%

~ Suppressed due to small cell size

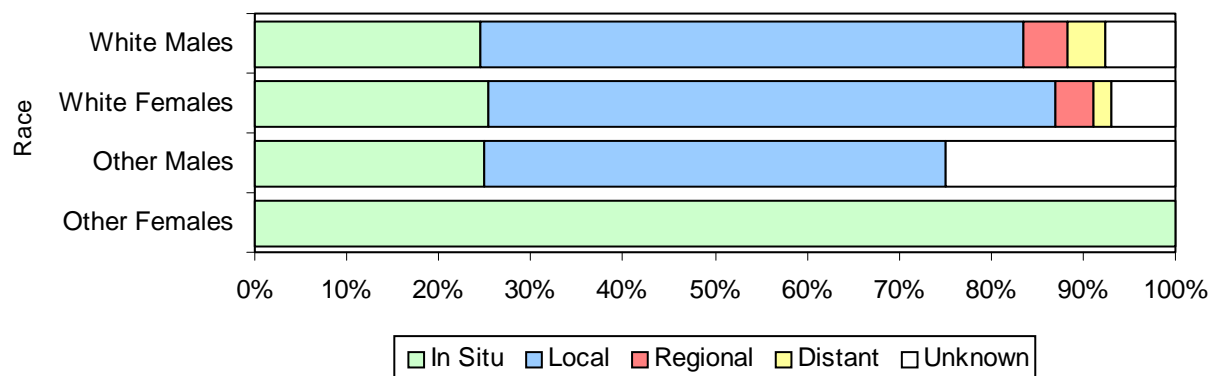
Total may not add to 100% due to rounding.

Figure 14.5

Melanoma of the Skin

Stage of Disease at Diagnosis by Race and Sex

West Virginia Residents 1997 – 2001



Race/Sex	In Situ		Local		Regional		Distant		Unknown		Total	
	#	%	#	%	#	%	#	%	#	%	#	%
White Males	275	24.6%	661	59.0%	53	4.7%	46	4.1%	85	7.6%	1,120	100.0%
White Females	225	25.4%	545	61.6%	37	4.2%	16	1.8%	62	7.0%	885	100.0%
Other Males	~		~		0	0.0%	0	0.0%	~		~	100.0%
Other Females	~		~		0	0.0%	0	0.0%	~		~	100.0%
Total	502	25.0%	1,208	60.1%	90	4.5%	62	3.1%	148	7.4%	2,010	100.0%

~ Suppressed due to small cell size

Total may not add to 100% due to rounding.

Figure 14.6