

Chapter 9



Cancer of the Kidney & Renal Pelvis

Cancer of the Kidney & Renal Pelvis

Incidence and Mortality by Sex and Year

West Virginia Residents 1993 – 2001

Year	Male				Female				Total			
	New Cases	Incid. Rate	Deaths	Mort. Rate	New Cases	Incid. Rate	Deaths	Mort. Rate	New Cases	Incid. Rate	Deaths	Mort. Rate
1993	122	14.5	49	5.7	101	8.9	38	3.2	223	11.2	87	4.3
1994	118	13.7	54	6.5	90	7.9	46	3.9	208	10.2	100	4.9
1995	155	17.1	66	8.0	97	8.5	40	3.5	252	12.4	106	5.2
1996	144	16.3	58	6.5	105	9.2	47	3.8	249	12.2	105	5.1
1997	133	14.7	70	8.1	123	10.4	34	2.8	256	12.4	104	5.0
1998	158	16.9	53	5.7	80	6.6	39	3.2	238	11.4	92	4.4
1999	153	16.7	52	5.8	105	8.8	35	2.9	258	12.3	87	4.1
2000	154	16.5	50	5.7	114	9.6	40	3.1	268	12.7	90	4.2
2001	167	17.7	54	6.2	120	10.2	37	3.0	287	13.5	91	4.3

Number of new cases excludes in situ cases.

Table 9.1

Rates are per 100,000 West Virginia residents and are age-adjusted to the 2000 U.S. standard population.

Overview

- After age 24, incidence for cancer of the kidney and renal pelvis increased with increasing age (Figure 9.3).
- The 1997-2001 average annual age-adjusted incidence rate for West Virginia men (16.5 per 100,000) was nearly twice that of West Virginia women (9.1 per 100,000) (Figures 1.3 and 1.4).
- During 1997-2001, 55% of newly diagnosed cases in West Virginia residents were identified with in situ or local disease. Stage was not reported in 10% of cases (Figure 9.5).
- Each year from 1993 through 2001, approximately 95 West Virginians died of cancer of the kidney and renal pelvis (Table 9.1).

Risk Factors

- Cigarette smoking is causally linked to cancers of the kidney and renal pelvis.
- Abuse of phenacetin-containing pain relievers is also causally linked to these cancers. These medications have been available by prescription only since the late 1970s.
- Obesity is a risk factor.

Prevention

- Improved lifestyle behaviors, predominantly avoiding tobacco use, could potentially decrease the incidence of this malignancy.

Cancer of the Kidney & Renal Pelvis

Incidence Rates*, Age-Adjusted

West Virginia Residents 1993 – 2001, U.S. Residents 1993 – 2000

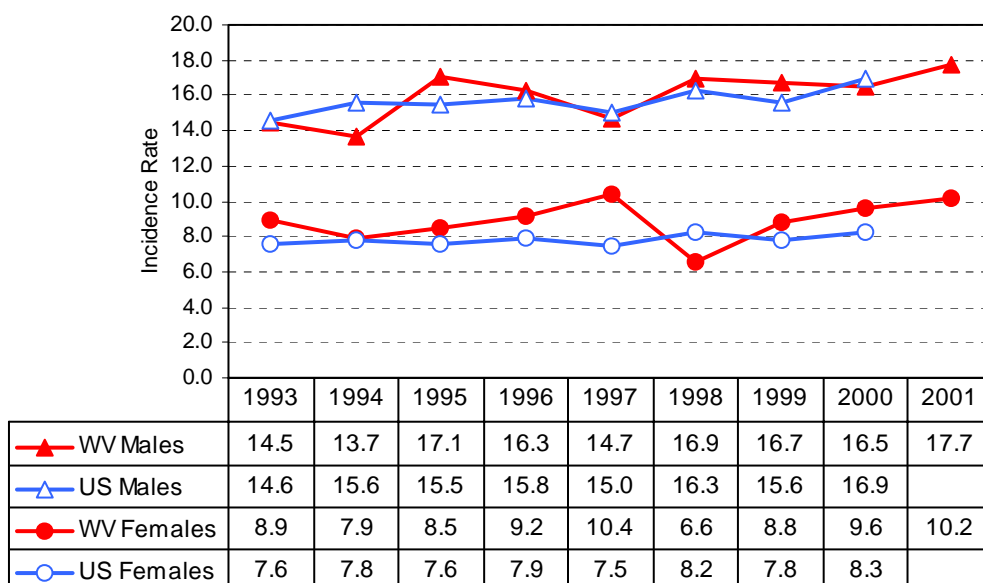


Figure 9.1

* Rates are per 100,000 and are age-adjusted to the 2000 U.S. standard population.
U.S. rates are from SEER (Ries et al., 2003).

Cancer of the Kidney & Renal Pelvis

Mortality Rates*, Age-Adjusted

West Virginia Residents 1993 – 2001, U.S. Residents 1993 – 2000

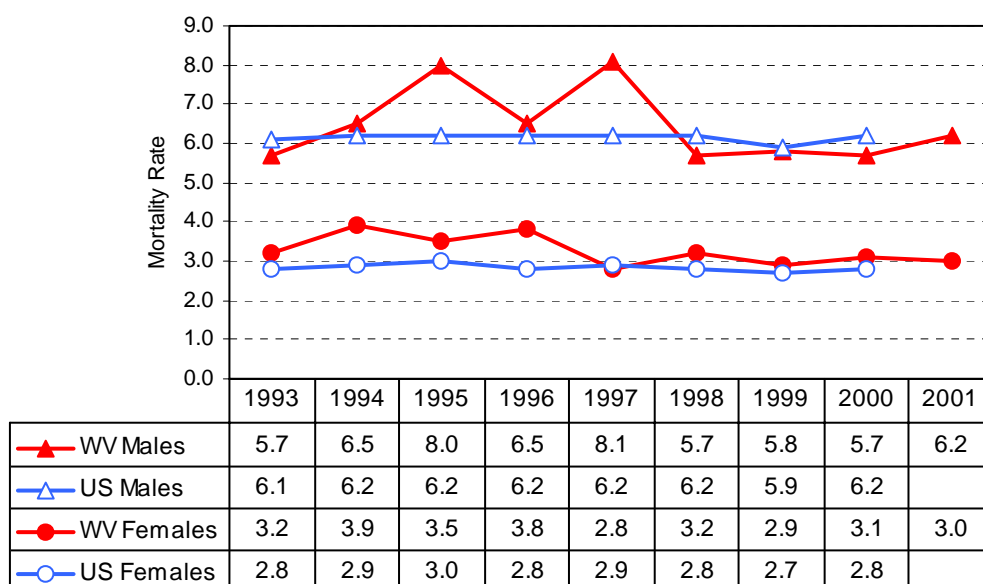


Figure 9.2

* Rates are per 100,000 and are age-adjusted to the 2000 U.S. standard population.
U.S. rates are from SEER (Ries et al., 2003).

Cancer of the Kidney & Renal Pelvis

Incidence Rates*, Age-Specific
West Virginia Residents 1997 – 2001

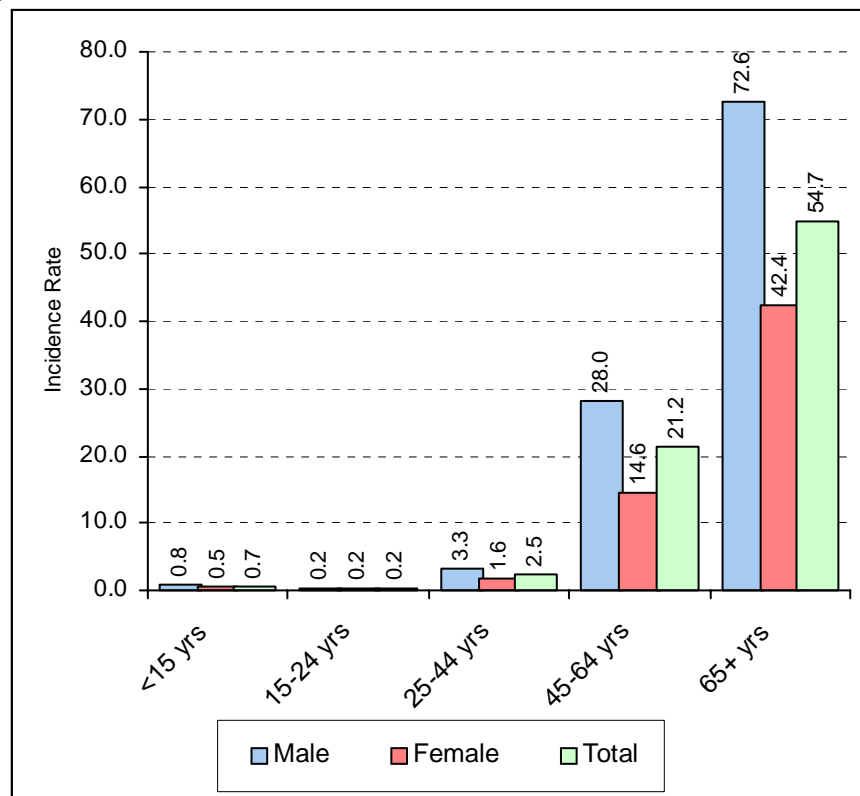


Figure 9.3

*Five-year average annual rate per 100,000 West Virginia residents

Cancer of the Kidney & Renal Pelvis

Most Frequent Histologies
West Virginia Residents 1997 – 2001

ICD-O Code	Histology	% of Invasive Cases
831	Renal Cell Carcinoma	79.0
813	Papillary Transitional Cell Carcinoma	6.0
812	Transitional Cell Carcinoma	4.1
800	Malignant Neoplasm	2.6
801	Carcinoma	2.4
814	Adenocarcinoma	1.9
826	Adenocarcinoma (Papillary or in Villous Adenoma)	1.3
896	Wilms' Tumor	1.0

Table 9.2

Cancer of the Kidney & Renal Pelvis

Stage of Disease at Diagnosis
West Virginia Residents 1997 – 2001

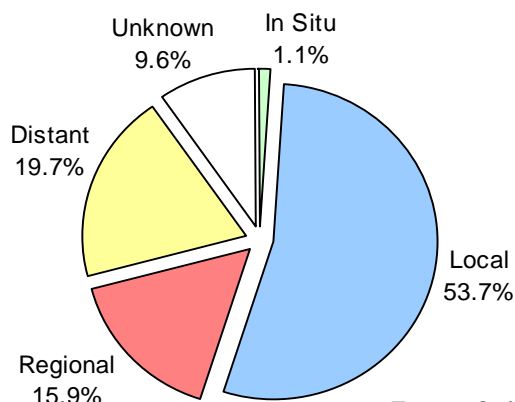
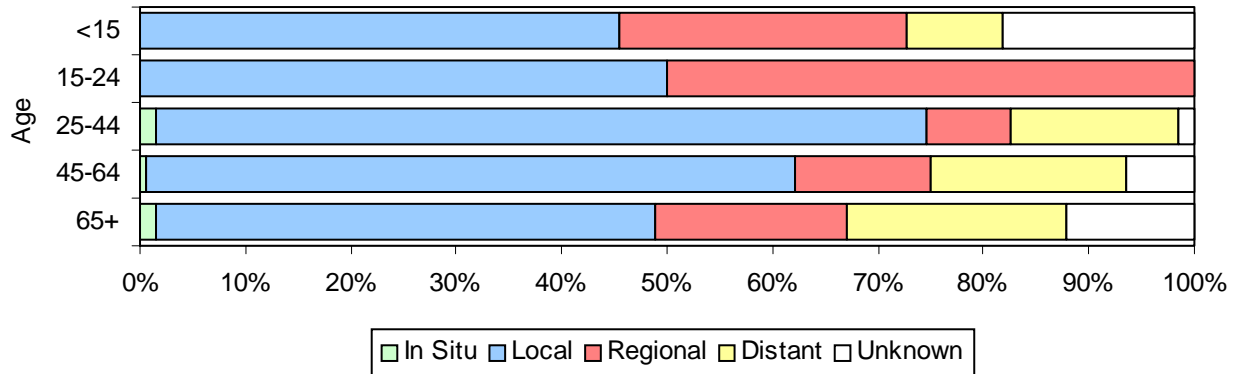


Figure 9.4

Cancer of the Kidney & Renal Pelvis

Stage of Disease at Diagnosis by Age

West Virginia Residents 1997 – 2001



Age	In Situ		Local		Regional		Distant		Unknown		Total	
	#	%	#	%	#	%	#	%	#	%	#	%
<15	0	0.0%	~		~		~		~		~	100.0%
15-24	0	0.0%	~		~		0	0.0%	0	0.0%	~	100.0%
25-44	~		46	73.0%	5	7.9%	10	15.9%	~		63	100.0%
45-64	~		293	61.4%	62	13.0%	~		31	6.5%	477	100.0%
65+	11	1.4%	365	47.5%	139	18.1%	161	20.9%	93	12.1%	769	100.0%
Total	15	1.1%	710	53.7%	210	15.9%	260	19.7%	127	9.6%	1,322	100.0%

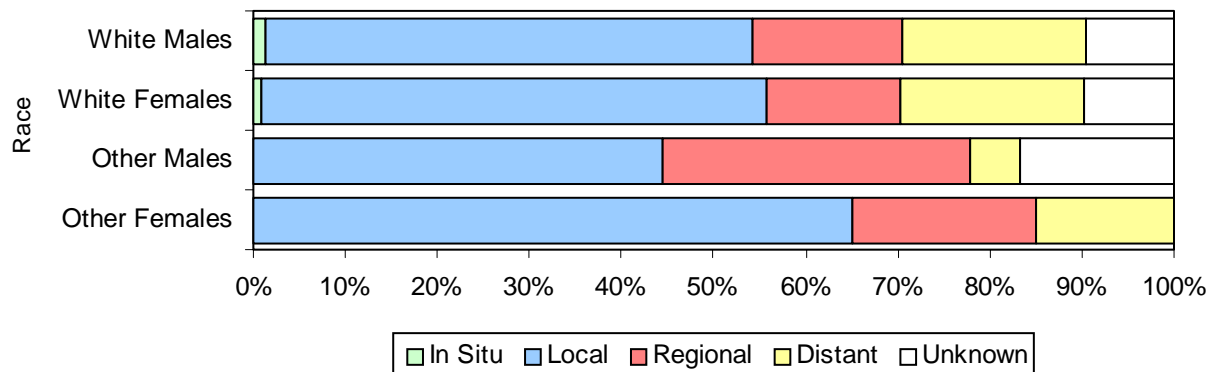
~ Suppressed due to small cell size
Total may not add to 100% due to rounding.

Figure 9.5

Cancer of the Kidney & Renal Pelvis

Stage of Disease at Diagnosis by Race and Sex

West Virginia Residents 1997 – 2001



Race/Sex	In Situ		Local		Regional		Distant		Unknown		Total	
	#	%	#	%	#	%	#	%	#	%	#	%
White Males	10	1.3%	400	52.8%	124	16.4%	151	19.9%	72	9.5%	757	100.0%
White Females	5	0.9%	289	54.8%	76	14.4%	105	19.9%	52	9.9%	527	100.0%
Other Males	0	0.0%	8	44.4%	6	33.3%	~		~		18	100.0%
Other Females	0	0.0%	13	65.0%	4	20.0%	~		~		20	100.0%
Total	15	1.1%	710	53.7%	210	15.9%	260	19.7%	127	9.6%	1,322	100.0%

~ Suppressed due to small cell size
Total may not add to 100% due to rounding.

Figure 9.6