

Chapter 6

Cancer of the Corpus Uteri & Uterus, NOS



Cancer of the Corpus Uteri & Uterus, NOS

Incidence and Mortality by Year

West Virginia Females 1993 – 2001

Year	Female			
	New Cases	Incid. Rate	Deaths	Mort. Rate
1993	259	23.2	35	3.0
1994	285	26.3	53	4.4
1995	283	24.7	45	3.7
1996	284	25.6	63	5.2
1997	343	30.9	52	4.4
1998	307	27.0	50	4.0
1999	301	26.6	57	4.6
2000	330	29.1	60	5.1
2001	292	25.9	48	4.0

Number of new cases excludes in situ cases.

Rates are per 100,000 West Virginia females and are age-adjusted to the 2000 U.S. standard population.

Table 6.1

Overview

- During 1997-2001, uterine cancer remained the fourth most common invasive cancer diagnosed in West Virginia women (Figure 1.4).
- Incidence increased markedly with age. Compared to women aged 25-44 years, those aged 45-64 years were over six times more likely to develop this disease. Those aged 65 and older were over nine times more likely to do so (Figure 6.3).
- The majority of uterine cancers were diagnosed at in situ or local stages (71%). Stage was not reported in 7% of cases (Figure 6.4).

Risk Factors

- Early menarche, late menopause, obesity, a history of anovulation, tamoxifen, and unopposed estrogen therapy have all been associated with increased risk.

Prevention

- Endometrial tissue sampling of high-risk menopausal and postmenopausal women is an effective method to screen for cancer of the uterus.
- Regular pelvic exams may also help detect this and other gynecologic problems.

Cancer of the Corpus Uteri & Uterus, NOS

Incidence Rates*, Age-Adjusted

West Virginia Females 1993 – 2001, U.S. Females 1993 – 2000

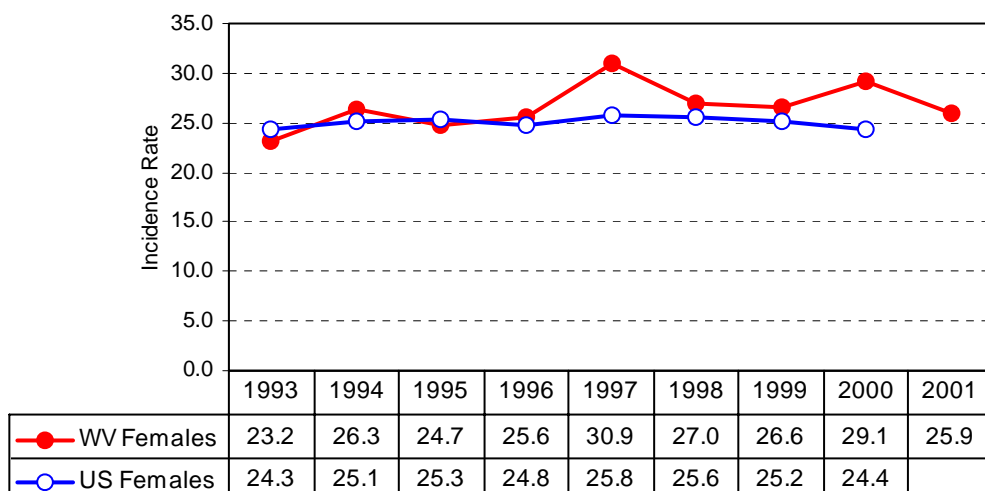


Figure 6.1

*Rates are per 100,000 females and are age-adjusted to the 2000 U.S. standard population.
U.S. rates are from SEER (Ries et al., 2003).

Cancer of the Corpus Uteri & Uterus, NOS

Mortality Rates*, Age-Adjusted

West Virginia Females 1993 – 2001, U.S. Females 1993 – 2000

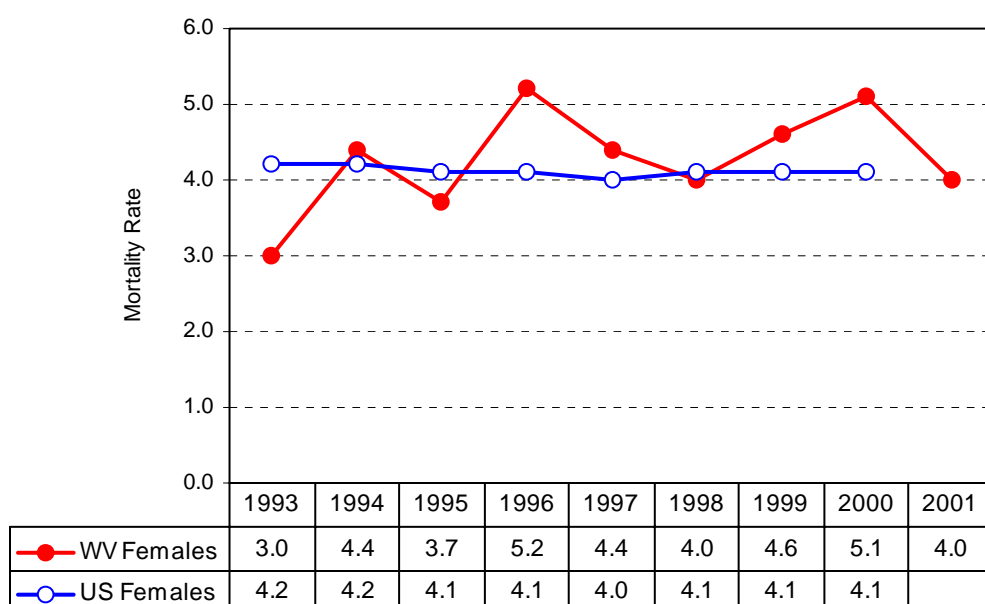


Figure 6.2

*Rates are per 100,000 females and are age-adjusted to the 2000 U.S. standard population.
U.S. rates are from SEER (Ries et al., 2003).

Cancer of the Corpus Uteri & Uterus, NOS

Incidence Rates*, Age-Specific

West Virginia Females 1997 – 2001

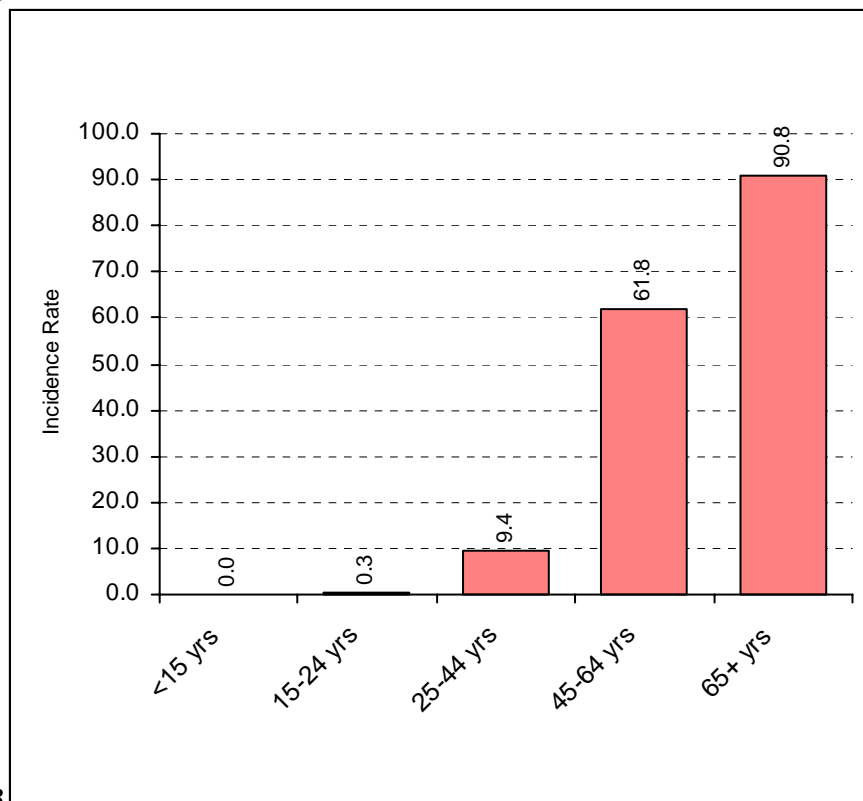


Figure 6.3

*Five-year average annual rate per 100,000 West Virginia females

Cancer of the Corpus Uteri & Uterus, NOS

Most Frequent Histologies

West Virginia Females 1997 – 2001

ICD-O Code	Histology	% of Invasive Cases
8380	Endometrioid Adenocarcinoma, NOS	42.7
8140	Adenocarcinoma	34.5
8560	Adenosquamous Carcinoma	2.0
8010	Carcinoma	1.9
8260	Papillary Adenocarcinoma	1.7
8570	Adenocarcinoma with Squamous Metaplasia	1.7
8460	Papillary Serous Cystadenocarcinoma	1.5
8890	Leiomyosarcoma	1.5
8980	Carcinosarcoma	1.4
8950	Mullerian Mixed Tumor	1.3

Table 6.2

Cancer of the Corpus Uteri & Uterus, NOS

Stage of Disease at Diagnosis

West Virginia Females 1997 – 2001

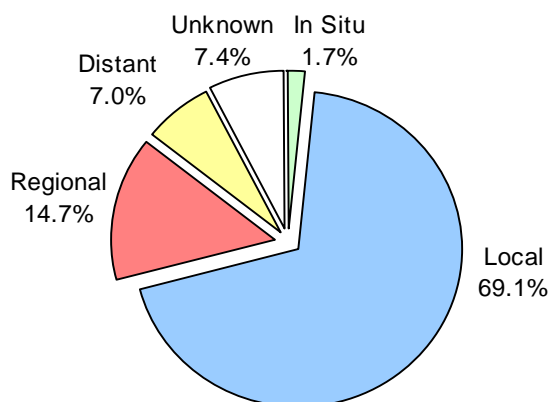
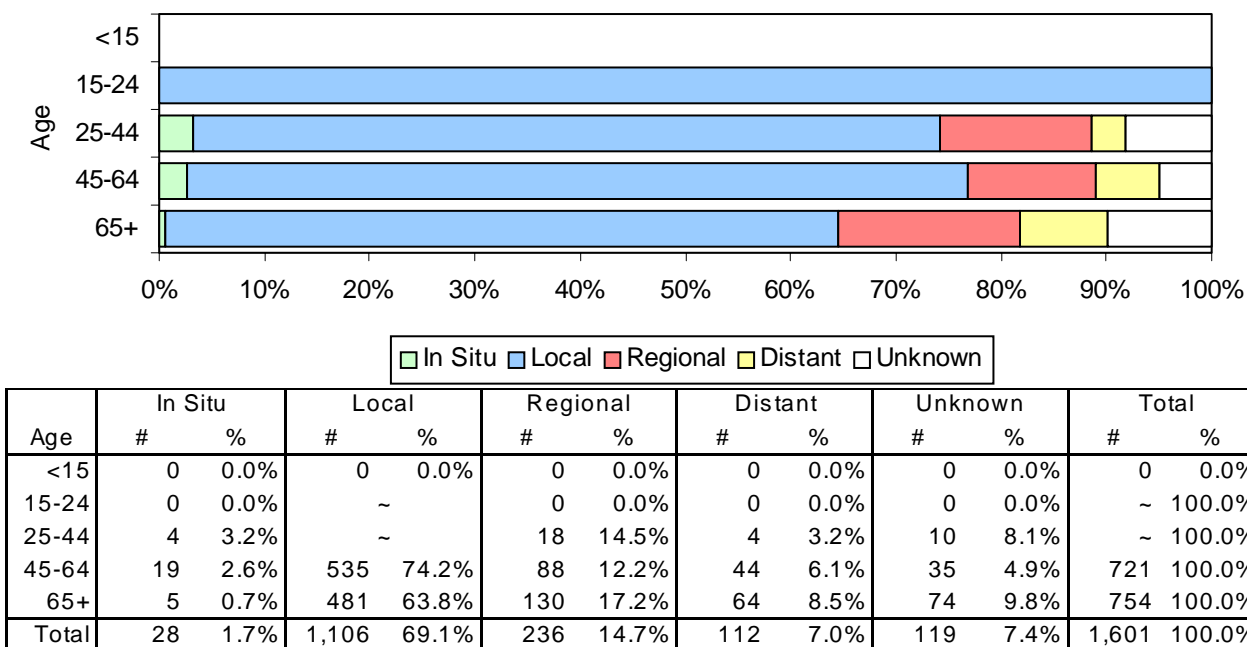


Figure 6.4

Cancer of the Corpus Uteri & Uterus, NOS

Stage of Disease at Diagnosis by Age

West Virginia Females 1997 – 2001



~ Suppressed due to small cell size

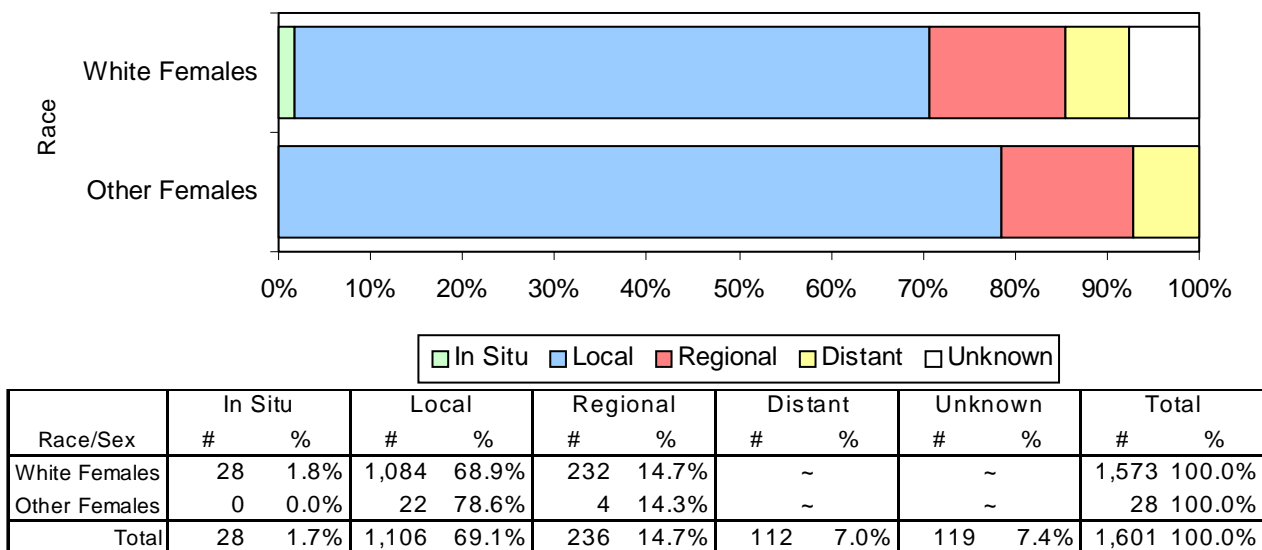
Total may not add to 100% due to rounding.

Figure 6.5

Cancer of the Corpus Uteri & Uterus, NOS

Stage of Disease at Diagnosis by Race

West Virginia Females 1997 – 2001



~ Suppressed due to small cell size

Total may not add to 100% due to rounding.

Figure 6.6