

CHAPTER 9: ALCOHOL CONSUMPTION

Binge Drinking in 2004 and 2005

Definition	Consumption of five or more alcoholic drinks on one or more occasions during the past one month.
Prevalence	WV: 9.7% (95% CI: 8.4-11.1) in 2004; 9.1% (95% CI: 7.9-10.3) in 2005. US: 14.8% (95% CI: 14.5-15.0) in 2004; 14.2% (95% CI: 14.0-14.5) in 2005. West Virginia ranked 48 th highest among 52 BRFSS participants in 2004 and 51 st highest among 53 BRFSS participants in 2005.
Time Trends	Overall from 1984 through 2005, there was a downward trend in binge drinking prevalence. A marked increase between 1995 and 2002 has been followed by a slight decline since.
Gender	Men: 15.5% (95% CI: 13.1-17.8) in 2004; 14.0% (95% CI: 11.7-16.2) in 2005. Women: 4.5% (95% CI: 3.3-5.6) in 2004; 4.6% (95% CI: 3.5-5.7) in 2005. Men had a significantly higher prevalence of binge drinking than women in both 2004 and 2005.
Age	Younger adults had higher rates of binge drinking than those aged 45 and older. The prevalence ranged from highs of 15%-20% among the 18-24 age group to lows of only 1%-3% among those aged 65 and older.
Education	There was no significant relationship between binge drinking and educational attainment. The lowest overall prevalence (8%) occurred among those with the least education in both 2004 and 2005.
Household Income	There was no consistent relationship between binge drinking and household income; however, the highest income group (\$75,000 and above annually) had the highest prevalence in both 2004 (16.0%) and 2005 (11.7%).

WV HEALTHY PEOPLE 2010 OBJECTIVES

Objective 26.10	Reduce the rate of binge drinking reported among adults 18 and older (binge drinking defined as five or more drinks on any one occasion in the past month) by 20%. (Baseline: 8.4% in 1997; Current: 9.1% in 2005)
------------------------	--

Table 9.1 Binge drinking by demographic characteristics: WVBRESS, 2004

Characteristic	Men			Women			Total		
	# Resp.	%	95% CI	# Resp.	%	95% CI	# Resp.	%	95% CI
TOTAL	1,309	15.5	13.1-17.8	2,113	4.5	3.3-5.6	3,422	9.7	8.4-11.1
Age									
18-24	74	26.3	15.7-36.9	114	13.9	6.8-21.1	188	20.3	13.8-26.8
25-34	180	20.4	14.3-26.4	282	7.8	4.4-11.2	462	14.1	10.6-17.6
35-44	232	23.1	17.0-29.2	360	3.9	1.8-5.9	592	13.2	9.9-16.5
45-54	295	14.9	10.5-19.4	398	* 3.1	1.3-5.0	693	9.0	6.5-11.4
55-64	255	6.8	3.6-9.9	379	* 3.0	1.1-4.9	634	4.8	3.0-6.7
65+	271	* 2.6	0.5-4.7	576	(-)	(-)	847	* 1.1	0.2-1.9
Education									
Less than H.S.	224	12.2	6.7-17.6	398	4.5	2.0-7.1	622	7.9	5.0-10.7
H.S. or G.E.D.	520	15.1	11.4-18.8	797	3.0	1.5-4.5	1,317	9.1	7.1-11.2
Some Post-H.S.	259	19.5	13.5-25.5	469	7.1	3.8-10.4	728	12.8	9.4-16.1
College Graduate	304	14.7	10.5-18.9	446	4.1	1.9-6.3	750	9.2	6.9-11.6
Income									
Less than \$15,000	168	10.9	5.0-16.8	464	4.6	2.1-7.2	632	7.0	4.3-9.8
\$15,000- 24,999	262	11.2	6.9-15.5	402	* 2.8	0.9-4.7	664	6.8	4.5-9.1
\$25,000- 34,999	164	17.8	10.5-25.1	253	7.2	3.2-11.2	417	12.2	8.1-16.4
\$35,000- 49,999	214	22.4	15.8-29.0	304	* 3.0	0.9-5.0	518	12.6	9.0-16.2
\$50,000- 74,999	211	10.5	6.0-15.0	229	* 4.2	1.4-7.1	440	7.7	4.9-10.6
\$75,000+	185	22.6	15.7-29.4	189	* 7.5	2.1-12.8	374	16.0	11.4-20.5

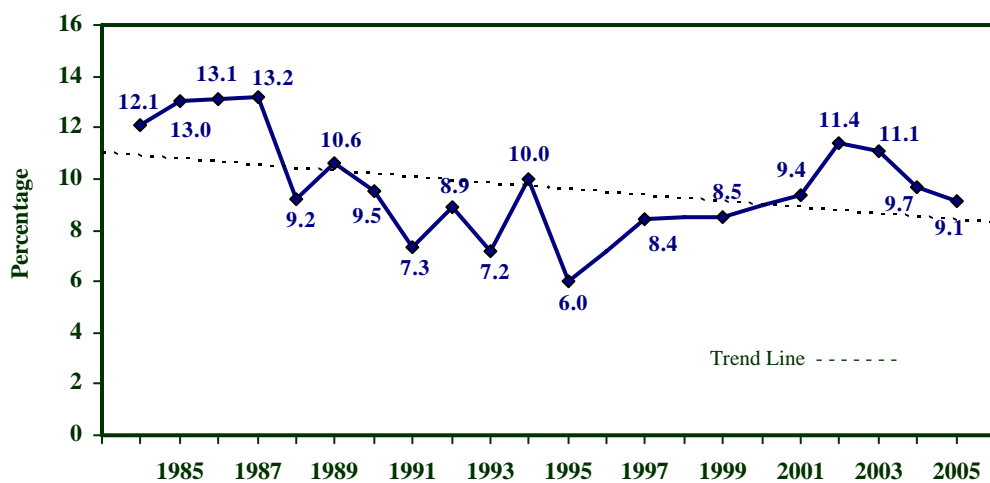
* Use caution when interpreting and reporting this estimate. See discussion of unstable estimates on page 9.

Table 9.2 Binge drinking by demographic characteristics: WVBRESS, 2005

Characteristic	Men			Women			Total		
	# Resp.	%	95% CI	# Resp.	%	95% CI	# Resp.	%	95% CI
TOTAL	1,345	14.0	11.7-16.2	2,184	4.6	3.5-5.7	3,529	9.1	7.9-10.3
Age									
18-24	66	21.6	11.6-31.6	102	* 8.7	2.9-14.4	168	15.1	9.3-21.0
25-34	180	25.8	18.9-32.6	281	6.4	3.1-9.7	461	16.1	12.2-20.1
35-44	225	17.8	12.3-23.3	350	5.6	3.0-8.3	575	11.6	8.6-14.7
45-54	282	7.3	4.2-10.5	455	5.9	3.5-8.2	737	6.6	4.6-8.5
55-64	272	9.5	5.8-13.3	365	* 1.6	0.3-2.9	637	5.5	3.5-7.4
65+	318	4.9	2.4-7.4	622	1.5	0.6-2.5	940	2.9	1.8-4.1
Education									
Less than H.S.	247	14.8	9.1-20.5	382	* 0.6	0.0-1.4	629	7.9	4.8-11.0
H.S. or G.E.D.	549	14.5	11.0-17.9	864	5.1	3.3-6.9	1,413	9.7	7.7-11.6
Some Post-H.S.	248	13.8	8.7-18.9	500	6.2	3.5-8.9	748	9.3	6.7-12.0
College Graduate	300	12.2	7.9-16.5	435	4.9	2.6-7.2	735	8.6	6.1-11.0
Income									
Less than \$15,000	166	17.4	10.5-24.4	435	* 4.0	1.1-6.9	601	9.1	5.8-12.4
\$15,000- 24,999	267	14.7	9.5-20.0	461	5.7	2.9-8.5	728	9.9	7.0-12.8
\$25,000- 34,999	211	11.6	6.5-16.7	252	* 4.1	1.7-6.6	463	8.2	5.1-11.2
\$35,000- 49,999	204	12.4	7.4-17.5	264	* 3.4	1.4-5.5	468	8.1	5.3-10.9
\$50,000- 74,999	208	14.8	9.4-20.1	259	* 3.8	1.3-6.3	467	9.5	6.4-12.6
\$75,000+	172	16.1	9.3-22.8	211	* 7.0	2.9-11.1	383	11.7	7.6-15.8

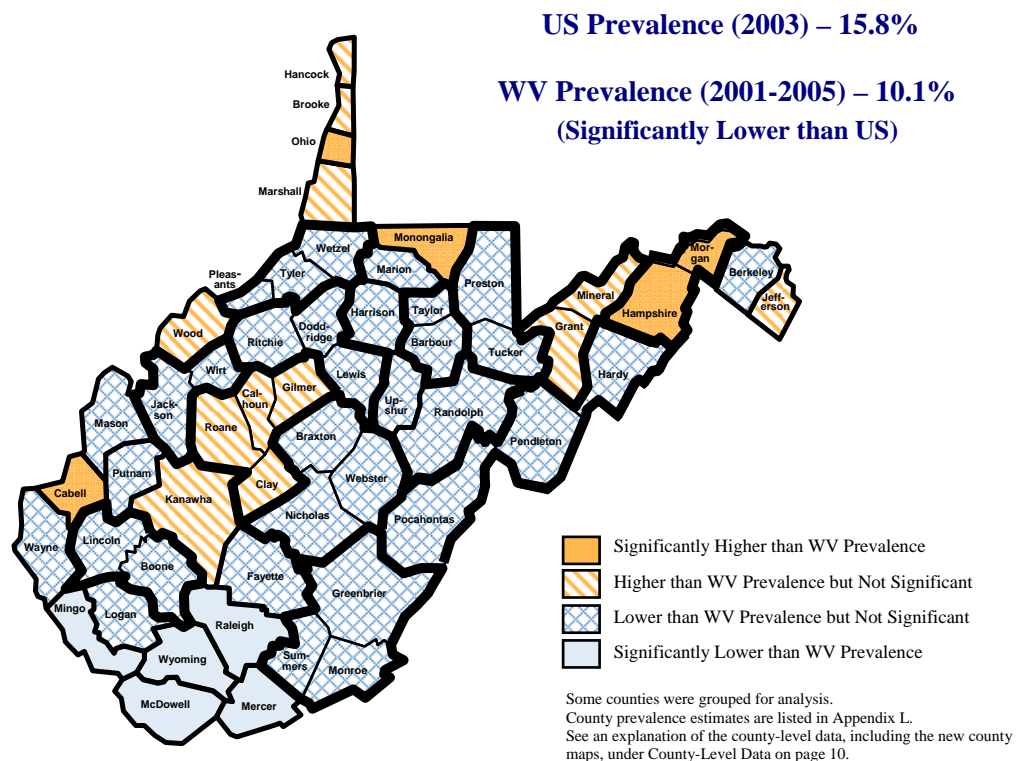
* Use caution when interpreting and reporting this estimate. See discussion of unstable estimates on page 9.

Figure 9.1 Binge drinking by year: WVBREFFS, 1984-2005



NOTE: Data are not available for the years 1996, 1998, and 2000.

Figure 9.2 Binge drinking by county: WVBRESS, 2001-2005



Heavy Drinking in 2004 and 2005 ¹

Definition	Consumption of more than two drinks per day for men and more than one drink per day for women during the past one month.
Prevalence	WV: 2.9% (95% CI: 2.2-3.6) in 2004; 3.1% (95% CI: 2.4-3.9) in 2005. US: 5.0% (95% CI: 4.9-5.2) in 2004; 5.1% (95% CI: 5.0-5.3) in 2005. West Virginia ranked 50 th highest among 52 BRFSS participants in 2004 and 49 th highest among 53 BRFSS participants in 2005.
Time Trends	From 1989 through 2005, the prevalence of heavy drinking among West Virginia adults has changed little, ranging from a low of 1.8% in 1995 to a high of 4.5% in 2002.
Gender	Men: 3.8% (95% CI: 2.5-5.0) in 2004; 4.7% (95% CI: 3.3-6.1) in 2005. Women: 2.1% (95% CI: 1.3-2.8) in 2004; 1.7% (95% CI: 1.0-2.4) in 2005. Men had higher risks than women in both years. This difference was significant in 2005.
Age	Heavy drinking was most prevalent among the youngest adults (around 5%-6%), and least prevalent among the oldest (around 1%).
Education	While adults with the most education had the lowest rates of heavy drinking both years, the difference was not significant.
Household Income	No association was found between heavy drinking and household income.

QUICK STATS

- 68.0% of West Virginia adults consumed no alcoholic beverages in the past 30 days.

WV HEALTHY PEOPLE 2010 OBJECTIVES

Objective 26.9	Reduce the rate of heavy drinking reported among adults 18 and older by 20%. (Baseline: 2.2% in 1997 using a new definition; Current: 3.1% in 2005)
-----------------------	---

¹ Note: Prior to 2001, heavy drinking was defined as consuming 60 or more drinks during the past month regardless of gender. This report redefines the data prior to 2001 to match the current definition of heavy drinking. Therefore, numbers presented in this chapter may not agree with publications prior to 2003.

Table 9.3 Heavy drinking by demographic characteristics: WVBRFSS, 2004

Characteristic	Men			Women			Total		
	# Resp.	%	95% CI	# Resp.	%	95% CI	# Resp.	%	95% CI
TOTAL	1,305	3.8	2.5-5.0	2,111	2.1	1.3-2.8	3,416	2.9	2.2-3.6
Age									
18-24	74	* 8.1	1.9-14.2	115	* 3.5	0.1-7.0	189	* 5.8	2.3-9.4
25-34	179	* 2.8	0.1-5.5	282	* 1.4	0.1-2.8	461	* 2.1	0.6-3.6
35-44	231	* 4.9	2.0-7.8	359	* 2.4	0.5-4.2	590	3.6	1.9-5.3
45-54	296	5.4	2.5-8.2	397	* 2.6	0.8-4.4	693	4.0	2.3-5.6
55-64	253	* 1.2	0.0-2.5	378	* 1.3	0.2-2.3	631	* 1.3	0.4-2.1
65+	270	* 0.4	0.0-1.2	576	* 1.5	0.1-2.9	846	* 1.0	0.1-1.9
Education									
Less than H.S.	223	* 3.4	0.3-6.5	398	* 2.3	0.2-4.4	621	* 2.8	1.0-4.6
H.S. or G.E.D.	518	4.3	2.1-6.5	797	* 0.9	0.2-1.5	1,315	2.6	1.4-3.8
Some Post-H.S.	260	* 4.4	1.6-7.1	469	* 3.3	1.1-5.4	729	3.8	2.1-5.5
College Graduate	302	* 2.3	0.7-3.9	444	2.6	1.1-4.0	746	2.5	1.4-3.5
Income									
Less than \$15,000	165	* 0.6	0.0-1.7	464	* 1.5	0.1-2.8	629	* 1.1	0.2-2.1
\$15,000- 24,999	261	* 4.7	1.7-7.7	402	* 2.1	0.4-3.7	663	3.3	1.7-5.0
\$25,000- 34,999	162	* 4.0	0.0-8.1	253	* 1.7	0.1-3.3	415	* 2.8	0.7-4.9
\$35,000- 49,999	214	* 6.0	2.0-10.0	304	* 1.5	0.0-3.0	518	3.7	1.6-5.9
\$50,000- 74,999	213	* 1.0	0.0-2.0	228	* 1.6	0.1-3.0	441	* 1.3	0.4-2.1
\$75,000+	186	* 5.1	1.5-8.8	188	* 4.1	0.5-7.8	374	4.7	2.1-7.3

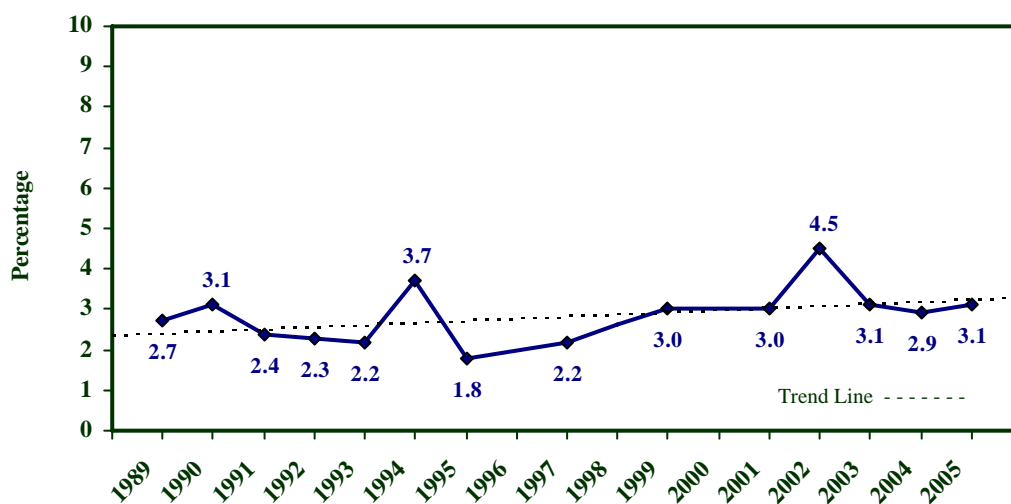
* Use caution when interpreting and reporting this estimate. See discussion of unstable estimates on page 9.

Table 9.4 Heavy drinking by demographic characteristics: WVBRFSS, 2005

Characteristic	Men			Women			Total		
	# Resp.	%	95% CI	# Resp.	%	95% CI	# Resp.	%	95% CI
TOTAL	1,338	4.7	3.3-6.1	2,182	1.7	1.0-2.4	3,520	3.1	2.4-3.9
Age									
18-24	65	* 5.6	0.0-11.6	100	* 3.6	0.0-7.6	165	* 4.6	0.9-8.2
25-34	180	6.2	2.6-9.8	282	* 2.4	0.4-4.4	462	4.3	2.2-6.4
35-44	222	* 6.3	2.4-10.1	349	* 1.8	0.2-3.3	571	4.0	1.9-6.1
45-54	282	* 3.2	1.2-5.3	456	2.1	0.9-3.2	738	2.6	1.5-3.8
55-64	271	4.8	2.1-7.5	366	* 1.0	0.0-2.1	637	2.9	1.4-4.3
65+	316	* 2.6	0.7-4.6	620	* 0.3	0.0-0.7	936	* 1.3	0.4-2.1
Education									
Less than H.S.	247	9.8	4.7-14.9	381	* 0.4	0.0-1.0	628	5.2	2.5-7.9
H.S. or G.E.D.	546	4.6	2.6-6.5	865	* 1.9	0.8-3.0	1,411	3.2	2.1-4.3
Some Post-H.S.	246	* 2.4	0.6-4.2	499	* 2.2	0.5-3.9	745	2.3	1.0-3.5
College Graduate	298	* 2.4	0.7-4.1	434	* 1.7	0.3-3.1	732	2.0	0.9-3.1
Income									
Less than \$15,000	165	* 5.4	1.8-8.9	433	* 2.2	0.1-4.2	598	3.4	1.5-5.2
\$15,000- 24,999	266	6.4	2.9-10.0	461	* 1.5	0.2-2.8	727	3.8	2.0-5.6
\$25,000- 34,999	210	* 3.0	0.1-5.9	253	* 1.9	0.2-3.6	463	* 2.5	0.7-4.2
\$35,000- 49,999	202	* 4.2	1.4-7.0	264	* 1.5	0.0-3.3	466	* 2.9	1.2-4.6
\$50,000- 74,999	208	* 4.4	1.6-7.2	260	* 1.9	0.0-3.8	468	3.2	1.5-4.9
\$75,000+	173	* 5.5	1.2-9.8	210	* 3.4	0.2-6.5	383	* 4.5	1.8-7.2

* Use caution when interpreting and reporting this estimate. See discussion of unstable estimates on page 9.

Figure 9.3 Heavy drinking by year: WVBRFSS, 1989-2005



NOTE: Data are not available for the years 1996, 1998, and 2000.

No Alcoholic Beverages in 2005

Definition

Consumption of no alcoholic beverages in the past 30 days.

Table 9.5 No alcoholic beverages in past 30 days by demographic characteristics: WVBRFSS, 2005

Characteristic	Men			Women			Total		
	# Resp.	%	95% CI	# Resp.	%	95% CI	# Resp.	%	95% CI
TOTAL	1,358	59.6	56.5-62.6	2,191	75.8	73.7-78.0	3,549	68.0	66.1-69.9
Age									
18-24	68	*52.0	39.2-64.7	102	*63.4	53.2-73.6	170	57.6	49.3-65.8
25-34	182	44.8	37.0-52.6	282	71.5	65.9-77.2	464	58.1	53.1-63.0
35-44	226	55.5	48.5-62.4	351	72.1	67.1-77.2	577	63.9	59.6-68.3
45-54	286	65.2	59.3-71.1	458	69.7	65.2-74.3	744	67.5	63.8-71.2
55-64	276	64.4	58.2-70.6	366	80.4	76.0-84.8	642	72.6	68.8-76.4
65+	318	73.1	67.8-78.3	623	90.2	87.7-92.6	941	83.1	80.4-85.8
Education									
Less than H.S.	250	66.8	59.1-74.5	382	92.7	90.1-95.4	632	79.4	74.8-83.9
H.S. or G.E.D.	554	63.0	58.3-67.7	869	78.8	75.5-82.0	1,423	71.0	68.1-73.9
Some Post-H.S.	249	60.5	53.5-67.4	502	69.1	64.2-74.1	751	65.6	61.5-69.6
College Graduate	304	45.8	39.5-52.1	435	64.1	59.1-69.0	739	54.9	50.8-59.0
Income									
Less than \$15,000	167	68.1	59.5-76.7	435	88.2	84.1-92.3	602	80.5	76.3-84.8
\$15,000- 24,999	269	66.2	59.3-73.0	462	80.3	75.8-84.8	731	73.7	69.6-77.8
\$25,000- 34,999	214	67.1	60.1-74.1	253	77.3	71.5-83.1	467	71.7	67.1-76.4
\$35,000- 49,999	207	56.7	49.2-64.3	265	76.8	71.3-82.4	472	66.3	61.5-71.2
\$50,000- 74,999	209	52.7	45.2-60.2	262	65.8	59.6-71.9	471	58.9	54.0-63.9
\$75,000+	175	37.7	29.9-45.6	211	50.5	43.1-58.0	386	43.8	38.3-49.2

* Use caution when interpreting and reporting this estimate. See discussion of unstable estimates on page 9.