

CHAPTER 1: HEALTH STATUS

Fair or Poor General Health in 2006

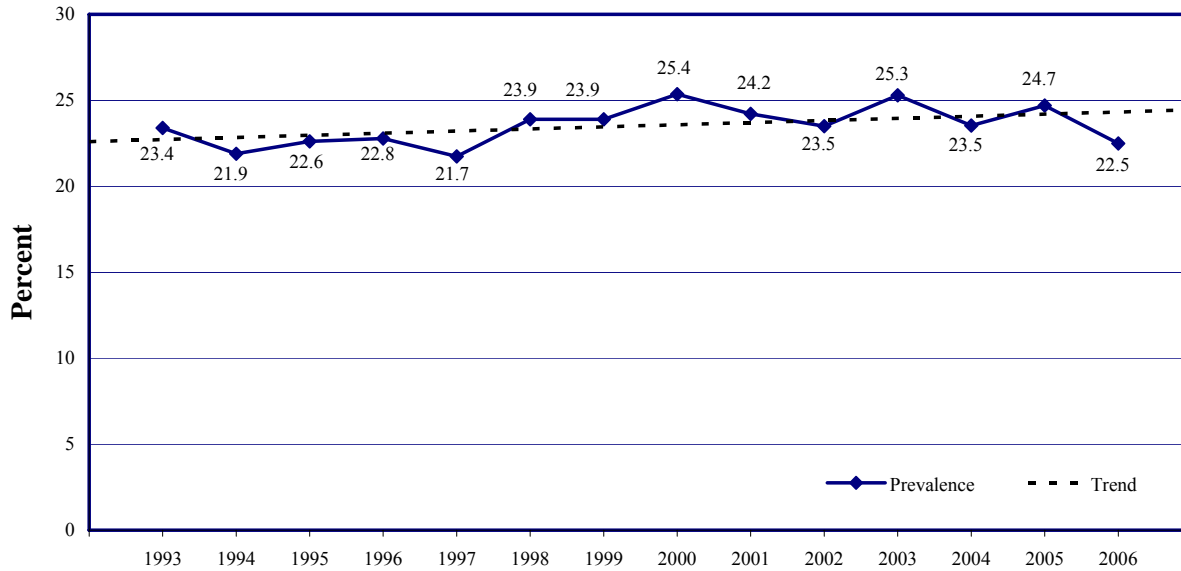
Definition	Responding “Fair” or “Poor” to the following question: “Would you say that in general your health is: Excellent, Very Good, Good, Fair, or Poor?”
Prevalence	<p>WV: 22.5% (95% CI: 21.1-24.0) in 2006.</p> <p>US: 16.2% (95% CI:15.9-16.5) in 2006.</p> <p>West Virginia ranked 2nd highest among 50 US States and DC in 2006.</p>
Gender	<p>Men: 20.2% (95% CI: 18.0-22.3) in 2006.</p> <p>Women: 24.6% (95% CI: 22.6-26.6) in 2006.</p> <p>Women reported fair or poor health significantly more often than men.</p>
Age	Fair or poor health increased significantly with age. The prevalence ranged from a low of 7.9% for 18-24-year-olds to a high of 36.1% among those 65 and older.
Education	Adults with less than a high school education reported fair or poor health the most frequently, at a prevalence of 46.1%. Significant improvements in general health were seen with each higher level of education. College graduates assigned themselves a fair or poor health status at a rate of only 8.2%.
Household Income	Fair or poor health was experienced by almost 1 of every 2 adults in the lowest income group (less than \$15,000 annually). Among adults with annual household incomes of \$50,000 or more, only about 1 in 10 had fair or poor health.

Table 1.1 Fair or poor health by demographic characteristics: WVBRFSS, 2006

Characteristic	Men			Women			Total		
	# Resp.	%	95% CI	# Resp.	%	95% CI	# Resp.	%	95% CI
TOTAL	1,489	20.2	18.0-22.3	2,292	24.6	22.6-26.6	3,781	22.5	21.0-24.0
Age									
18-24	67	* 3.9	0.0-8.3	78	* 12.1	4.5-19.7	145	7.9	3.5-12.3
25-34	150	* 3.9	0.8-6.9	265	12.9	8.4-17.4	415	8.4	5.6-11.1
35-44	231	16.4	11.3-21.5	368	15.1	10.8-19.5	599	15.7	12.4-19.1
45-54	331	25.6	20.5-30.8	430	26.6	22.2-31.1	761	26.1	22.7-29.6
55-64	370	35.5	30.2-40.9	466	31.2	26.8-35.6	836	33.3	29.9-36.8
65+	336	30.6	25.5-35.8	672	40.0	35.9-44.1	1,008	36.1	32.8-39.3
Education									
Less than H.S.	257	40.6	33.7-47.5	360	52.0	46.0-58.1	617	46.1	41.4-50.8
H.S. or G.E.D.	591	22.4	18.8-26.1	895	27.7	24.2-31.2	1,486	25.1	22.6-27.6
Some Post-H.S.	280	12.3	8.7-15.9	541	17.6	14.0-21.3	821	15.4	12.8-18.0
College Graduate	357	7.8	4.8-10.9	493	8.5	6.0-11.0	850	8.2	6.2-10.1
Income									
Less than \$15,000	168	50.0	40.7-59.3	413	48.4	42.4-54.4	581	49.0	43.9-54.0
\$15,000- 24,999	266	35.8	29.3-42.3	461	33.3	28.0-38.6	727	34.4	30.3-38.5
\$25,000- 34,999	215	19.6	14.0-25.2	280	20.2	15.1-25.3	495	19.9	16.1-23.7
\$35,000- 49,999	237	12.3	7.9-16.8	287	13.7	9.4-18.0	524	13.0	9.9-16.1
\$50,000- 74,999	225	10.9	6.8-14.9	272	9.4	6.0-12.9	497	10.2	7.5-12.8
\$75,000+	246	6.8	3.6-10.0	262	5.8	2.5-9.1	508	6.4	4.1-8.7

* Use caution when interpreting and reporting this specific estimate. See the detailed discussion about estimates in the Methodology section.
Source: West Virginia Behavioral Risk Factor Surveillance System (WVBRFSS), West Virginia Health Statistics Center, January 2008.
Population: Non-institutionalized adults age 18 and older residing in West Virginia.

Figure 1.1 Fair or poor health by year: WVBRFSS, 1993-2006



Source: West Virginia Behavioral Risk Factor Surveillance System (WVBRFSS), West Virginia Health Statistics Center, January 2008.
 Population: Non-institutionalized adults age 18 and older residing in West Virginia.
 Definition: Responding “Fair” or “Poor” to the following question: “Would you say that in general your health is: Excellent, Very Good, Good, Fair, or Poor?”

Figure 1.2 Fair or poor health by county: WVBRFSS, 2002-2006

