

CHAPTER 6: TOBACCO USE

Current Cigarette Smoking in 2006

Definition	Smoking at least 100 cigarettes in one's lifetime and currently smoking every day or some days.
Prevalence	WV: 25.7% (95% CI: 24.0-27.5) in 2006. US: 19.7% (95% CI: 19.4-20.0) in 2006. West Virginia ranked 2 nd highest among 50 US States and DC in 2006.
Time Trends	The proportion of current smokers has fluctuated between approximately 26% and 28% along a flat 1993 through 2006 trend line. After 2002, however, an unbroken series of very slight declines have occurred in the prevalence of smoking among West Virginia adults.
Gender	Men: 25.4% (95% CI: 22.7-28.1) in 2006. Women: 26.1% (95% CI: 23.8-28.3) in 2006. Men and women had no significant difference in their prevalence of current cigarette smoking in 2006.
Age	Adults under age 65 smoked cigarettes significantly less often than those aged 65 and older in 2006. Current smoking prevalence among the 65 and older group was 12.8%, well below the range of 22.1% through 36.2% for the other adult age groups.
Education	Current smoking was significantly less prevalence among college graduates than among those with less education, without regard to whether they were men or women. Among the remaining education groups, however, men with less than a high school education were significantly more likely to be current cigarette smokers than men with any post high school education. For women, there was no such significant difference.
Household Income	The prevalence of current smoking in 2006 decreased steadily as household income increased. Only 12.7% among the highest income group (\$75,000+ annual household income) were current smokers, compared with 38.7% among the lowest income group (less than \$15,000 in annual household income).

WV HEALTHY PEOPLE 2010 OBJECTIVES

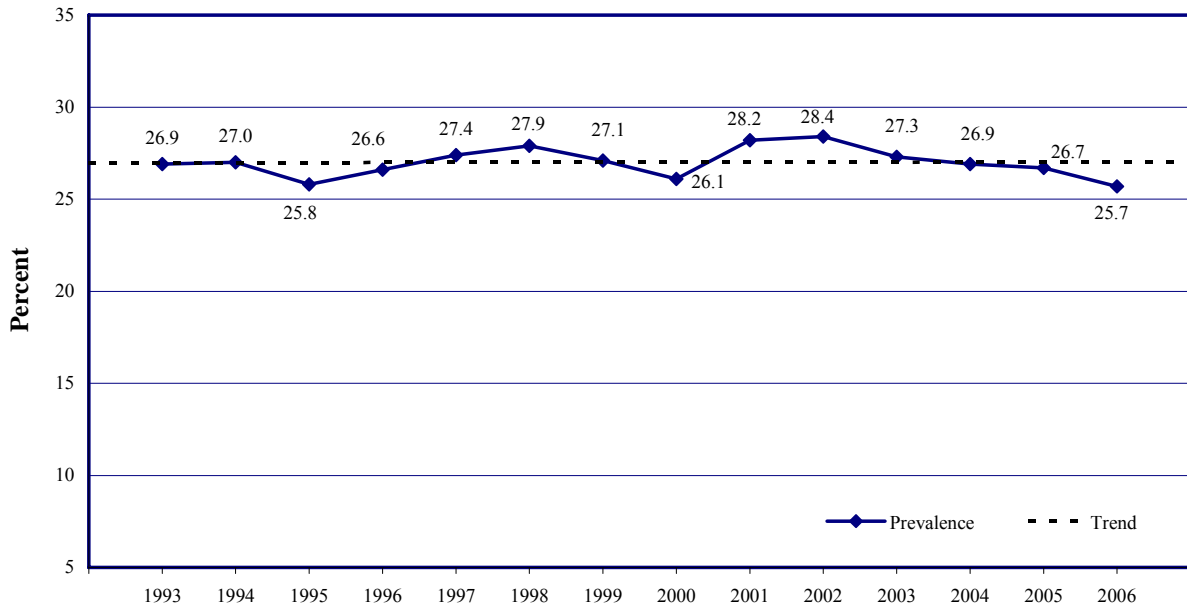
Objective 27.1a	Reduce the prevalence of cigarette smoking among adults aged 18+ to 20% or lower. (Baseline: 28% in 1998; Current: 25.7% in 2006)
Objective 27.1b	Reduce the prevalence of cigarette smoking among adults aged 18+ in the lower socioeconomic level (12 years or fewer of education and a household income of less than \$25,000) to 25% or lower. (Baseline: 36% in 1998; Current: 35.8% in 2006)
Objective 27.1c	Reduce the prevalence of cigarette smoking among women aged 18-44 (i.e., childbearing ages) to 25% or lower. (Baseline: 36% in 1998; Current: 34.0% in 2006)

Table 6.1 Current cigarette smoking by demographic characteristics: WVBRFSS, 2006

Characteristic	Men			Women			Total		
	# Resp.	%	95% CI	# Resp.	%	95% CI	# Resp.	%	95% CI
TOTAL	1,492	25.4	22.7-28.1	2,298	26.1	23.8-28.3	3,790	25.7	24.0-27.5
Age									
18-24	67	*32.3	20.6-43.9	78	*40.3	28.2-52.4	145	36.2	27.7-44.6
25-34	150	33.0	24.9-41.1	265	35.7	29.5-41.9	415	34.3	29.2-39.5
35-44	232	27.5	21.4-33.6	369	28.2	23.1-33.4	601	27.9	23.9-31.8
45-54	330	26.5	21.3-31.6	429	26.8	22.3-31.3	759	26.6	23.2-30.0
55-64	370	22.6	18.0-27.3	466	21.5	17.6-25.4	836	22.1	19.0-25.1
65+	339	12.2	8.5-15.9	678	13.2	10.4-15.9	1,017	12.8	10.6-15.0
Education									
Less than H.S.	258	39.0	31.6-46.4	361	32.6	26.8-38.4	619	35.9	31.1-40.6
H.S. or G.E.D.	593	28.4	23.9-32.9	899	29.0	25.3-32.7	1,492	28.7	25.8-31.6
Some Post-H.S.	281	23.7	18.0-29.5	542	29.3	24.1-34.4	823	26.9	23.0-30.8
College Graduate	356	11.4	7.6-15.2	493	12.1	8.8-15.5	849	11.8	9.2-14.3
Income									
Less than \$15,000	169	41.2	31.7-50.7	414	37.4	31.7-43.2	583	38.7	33.7-43.8
\$15,000- 24,999	267	30.9	24.1-37.7	462	34.5	28.7-40.2	729	32.9	28.5-37.3
\$25,000- 34,999	215	27.9	20.7-35.1	281	26.9	20.7-33.2	496	27.4	22.6-32.3
\$35,000- 49,999	237	24.2	17.8-30.6	287	24.1	18.2-30.0	524	24.1	19.8-28.5
\$50,000- 74,999	223	20.7	14.5-26.9	273	20.0	13.7-26.2	496	20.3	15.9-24.7
\$75,000+	247	12.4	8.0-16.9	262	13.0	8.4-17.5	509	12.7	9.5-15.9

* Use caution when interpreting and reporting this specific estimate. See the detailed discussion of estimates in the Methodology section.

Figure 6.1 Current cigarette smoking by year: WVBRFSS, 1993-2006



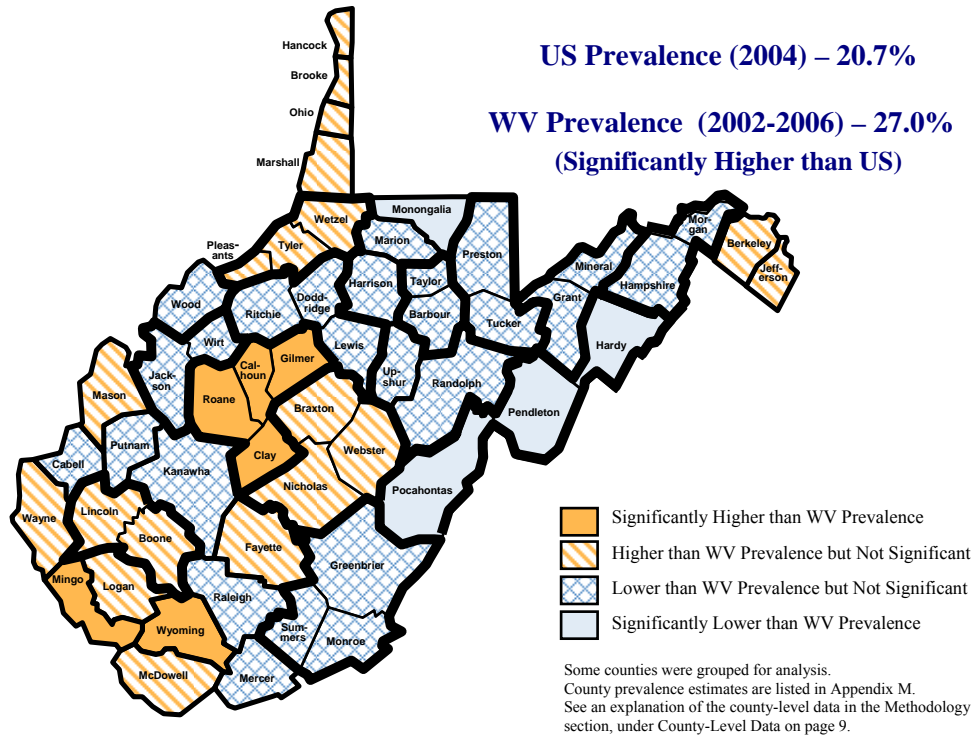
Source: West Virginia Behavioral Risk Factor Surveillance System (WVBRFSS), West Virginia Health Statistics Center, January 2008.

Population: Non-institutionalized adults age 18 and older residing in West Virginia.

Definition: Smoking at least 100 cigarettes in one's lifetime and currently smoking every day or some days.

Note: This Y axis does not begin with zero, in order to maintain a 30 percentage point Y axis range that facilitates comparability among a group of graphs presented together.

Figure 6.2 Current cigarette smoking by county: WVBRFSS, 2002-2006



“Quit smoking for a day” in 2006

Definition Responding “Yes” to the following question: “During the past 12 months, have you stopped smoking for one day or longer because you were trying to quit smoking?” (Restricted to every day smokers.)

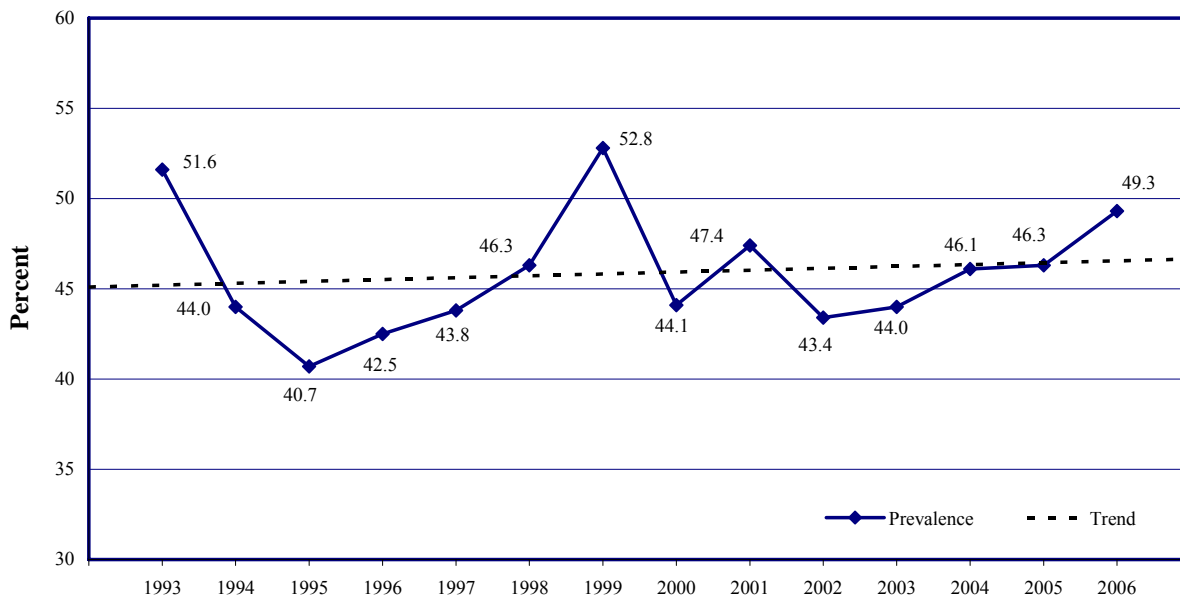
Prevalence **WV: 49.3%** (95% CI: 44.9-53.8) in 2006.
US: 50.9% (95% CI: 49.9-51.9) in 2006.
 West Virginia ranked 39th highest among 50 US States and DC in 2006.

Time Trends Between 2002 and 2006, an unbroken series of slight increases have occurred in the prevalence of West Virginia adults who were trying to quit smoking. The longer term (1993-2006) trend line has fluctuated up and down, however.

Gender **Men: 47.9%** (95% CI: 41.1-54.7) in 2006.
Women: 50.6% (95% CI: 44.9-56.4) in 2006.
 There was no significant difference in the prevalence between men and women.

Age, Education, and Household Income Reports of attempts to quit smoking were similar among most age, education, and household income groups in 2006.

Figure 6.3 “Quit smoking for a day” among every day current smokers by year: WVBRFSS, 1993-2006



Source: West Virginia Behavioral Risk Factor Surveillance System (WVBRFSS), West Virginia Health Statistics Center, January 2008.
 Population: Non-institutionalized adults age 18 and older residing in West Virginia.
 Definition: Responding “Yes” to the following question: “During the past 12 months, have you stopped smoking for one day or longer because you were trying to quit smoking?” (The results reported for this section have been limited to every day current smokers.)
 Note: This Y axis does not begin with zero, in order to maintain a 30 percentage point Y axis range that facilitates comparability among a group of graphs presented together.

Table 6.2 “Quit smoking for a day” among every day current smokers by demographic characteristics: WVBRFSS, 2006

Characteristic	Men			Women			Total		
	# Resp.	%	95% CI	# Resp.	%	95% CI	# Resp.	%	95% CI
TOTAL	298	47.9	41.1-54.7	452	50.6	44.9-56.4	750	49.3	44.9-53.8
Age									
18-24	21	*52.1	29.8-74.4	26	*52.2	30.9-73.6	47	*52.2	36.7-67.6
25-34	30	*55.8	36.6-75.0	77	*60.8	49.2-72.5	107	*58.7	48.0-69.3
35-44	57	*49.8	35.8-63.7	86	*52.4	40.4-64.3	143	51.1	41.8-60.3
45-54	78	*47.6	35.6-59.6	102	*42.5	32.0-52.9	180	45.0	37.0-53.0
55-64	76	*37.6	25.6-49.6	83	*46.6	34.9-58.3	159	41.8	33.3-50.3
65+	35	*38.7	21.1-56.3	75	*46.9	34.4-59.4	110	*43.5	33.1-53.9
Education									
Less than H.S.	78	*43.0	29.7-56.4	95	*51.7	39.8-63.6	173	46.9	37.8-56.0
H.S. or G.E.D.	128	*49.0	38.4-59.5	201	48.6	39.8-57.3	329	48.8	42.0-55.5
Some Post-H.S.	60	*46.2	31.5-60.9	114	*57.4	46.0-68.9	174	53.1	44.0-62.2
College Graduate	31	*58.6	39.3-77.9	41	*36.6	20.9-52.3	72	*48.5	35.0-62.1
Income									
Less than \$15,000	54	*49.9	32.6-67.2	125	*48.9	38.5-59.3	179	49.3	40.0-58.5
\$15,000- 24,999	64	*42.5	28.1-56.9	111	*57.2	45.7-68.7	175	50.9	41.6-60.2
\$25,000- 34,999	46	*67.2	52.3-82.2	54	*39.4	24.9-53.8	100	*54.2	42.7-65.8
\$35,000- 49,999	48	*40.0	24.1-55.9	50	*57.8	42.0-73.6	98	*48.0	36.3-59.7
\$50,000- 74,999	32	*37.1	17.4-56.7	38	*59.0	41.5-76.6	70	*47.3	33.5-61.2
\$75,000+	23	*49.4	27.6-71.1	23	*33.0	11.1-55.0	46	*41.1	25.4-56.9

* Use caution when interpreting and reporting this specific estimate. See the detailed discussion of estimates in the Methodology section.

Smoking Policies at Work in 2006**

Definition	<p>Indoor public and common areas Answered “Not allowed in any public areas” to the question “Which of the following best describes your place of work’s official smoking policy for indoor public or common areas, such as lobbies, rest rooms, and lunchrooms?”</p> <p>Indoor work areas Answered “Not allowed in any work areas” to the question “Which of the following best describes your place of work’s official smoking policy for work areas?” after having answered “yes” to the question “While working at your job, are you indoors most of the time?”</p> <p>Indoors anywhere at work Answered “Not allowed” to both of the smoking policy questions above.</p>
Prevalence	<p>Indoor public and common areas WV: 91.2% (95% CI: 89.4-93.0) in 2006.</p> <p>Indoor work areas WV: 91.8% (95% CI: 90.1-93.6) in 2006.</p> <p>Indoors anywhere at work WV: 89.6% (95% CI: 87.6-91.5) in 2006.</p>
Trends	<p>There were significant increases in the frequency of indoor worksite no-smoking policies between 2004 and 2006. Almost 90% of employed adults reported that smoking was prohibited in either work areas, public areas, or both within their indoor work facilities in 2006.</p>
Gender	<p>Men reported a significantly lower frequency of no-smoking policies for indoor public/common areas than women in 2006. In the work areas, however, there were only minor differences by gender in the prevalence of policies forbidding smoking.</p>
Age	<p>No significant differences by age were found in workplace smoking policies.</p>
Education	<p>The highest rates of no-smoking policies were found in the workplaces of persons with four or more years of college education. At 96.2%, the prevalence for this group significantly surpassed the prevalence for any of the other groups with lower education levels.</p>
Household Income	<p>There were no significant variations in the prevalence of no-smoking policies among clusters of adults from any household income level.</p>

** Among respondents who are either employed or self-employed AND who work indoors at their jobs most of the time.

Table 6.3 Workplace smoking policies by separate designated areas by demographic characteristics: WVBRFSS, 2006**

Characteristic	Smoking is not allowed in any indoor public or common areas at place of work (such as lobbies, restrooms, and lunchrooms)			Smoking not allowed in any indoor work areas at place of work.		
	# Resp.	%	95% CI	# Resp.	%	95% CI
TOTAL	1,378	91.2	89.4-93.0	1,377	91.8	90.1-93.6
Males	472	88.5	85.1-91.9	472	88.2	84.8-91.6
Females	906	93.3	91.4-95.2	905	94.6	92.9-96.4
Age						
18-24	52	95.7	90.8-100	52	96.1	91.6-100
25-34	218	88.5	83.2-93.8	218	91.2	86.3-96.1
35-44	349	90.1	86.2-94.0	348	89.5	85.5-93.4
45-54	420	91.5	88.5-94.5	420	91.8	88.7-94.9
55-64	276	93.1	89.9-96.2	276	93.9	90.9-96.9
65+	55	91.2	83.2-99.2	55	91.2	83.2-99.2
Education						
Less than H.S.	61	* 77.0	64.3-89.7	61	* 79.3	67.1-91.4
H.S. or G.E.D.	441	87.0	83.1-90.8	441	88.5	84.9-92.2
Some Post-H.S.	347	91.0	87.4-94.7	347	90.4	86.6-94.2
College Graduate	528	97.0	95.4-98.5	527	97.5	95.8-99.1
Income						
Less than \$15,000	63	* 80.8	69.9-91.7	63	* 81.9	71.2-92.7
\$15,000- 24,999	190	86.1	79.9-92.3	190	87.2	81.2-93.2
\$25,000- 34,999	162	92.7	88.6-96.8	162	92.5	88.6-96.5
\$35,000-49,999	239	88.7	83.8-93.7	239	92.6	88.4-96.7
\$50,000-74,000	289	92.7	88.7-96.7	289	92.5	88.4-96.6
\$75,000+	343	93.8	90.9-96.8	342	94.6	91.8-97.4

* Use caution when interpreting and reporting this specific estimate. See the detailed discussion of estimates in the Methodology section.

**Among respondents who are either employed or self-employed AND who work indoors at their jobs most of the time.

Table 6.4 No workplace smoking permitted by demographic characteristics: WVBRFSS, 2006**

Characteristic	Men			Women			Total		
	# Resp.	%	95% CI	# Resp.	%	95% CI	# Resp.	%	95% CI
TOTAL	472	85.9	82.3-89.5	905	92.4	90.4-94.4	1,377	89.6	87.6-91.5
Age									
18-24	22	* 97.6	92.9-100	30	* 92.0	82.9-100	52	94.5	89.1-99.9
25-34	67	* 82.6	72.3-92.9	151	92.6	88.1-97.1	218	88.1	82.8-93.5
35-44	119	82.8	75.3-90.3	229	92.6	88.6-96.7	348	88.2	84.1-92.2
45-54	153	85.6	79.1-92.1	267	90.8	86.9-94.7	420	88.6	85.0-92.1
55-64	93	86.0	78.8-93.1	183	95.8	92.9-98.8	276	92.0	88.7-95.4
65+	15	* 96.5	89.7-100	40	* 87.8	75.9-99.7	55	91.2	83.2-99.2
Education									
Less than H.S.	30	* 62.6	42.5-82.8	31	* 92.4	84.6-100	61	* 75.0	62.0-88.0
H.S. or G.E.D.	146	80.2	72.9-87.4	295	88.1	83.6-92.7	441	84.6	80.5-88.7
Some Post-H.S.	89	85.1	76.5-93.6	258	91.4	87.6-95.2	347	89.2	85.3-93.1
College Graduate	206	94.8	91.4-98.2	321	97.3	95.4-99.3	527	96.2	94.3-98.1
Income									
Less than \$15,000	8	* 71.8	41.5-100	55	* 83.2	71.5-94.8	63	* 80.8	69.9-91.7
\$15,000- 24,999	42	* 74.6	59.6-89.5	148	89.6	83.8-95.4	190	84.7	78.4-91.1
\$25,000- 34,999	51	85.6	76.2-95.0	111	93.4	88.9-98.0	162	90.0	85.3-94.8
\$35,000- 49,999	80	* 80.5	70.5-90.5	159	93.7	89.1-98.2	239	88.2	83.2-93.2
\$50,000- 74,999	106	89.2	81.4-97.0	183	91.7	87.0-96.4	289	90.6	86.3-95.0
\$75,000+	149	91.2	86.3-96.0	193	94.5	90.4-98.6	342	92.8	89.6-96.0

* Use caution when interpreting and reporting this specific estimate. See the detailed discussion of estimates in the Methodology section.

**Among respondents who are either employed or self-employed AND who work indoors at their jobs most of the time.

No Smoking Allowed in the Home in 2006

- Definition** Stated that smoking was not allowed anywhere inside the home.
- Prevalence** WV: **65.3%** (95% CI: 63.4-67.2) in 2006.
- Gender** **Men:** 64.3% (95% CI: 61.3-67.2) in 2006.
Women: 66.3% (95% CI: 63.9-68.7) in 2006.
 There were no significant differences in this risk factor between men and women.
- Age** A significantly higher prevalence of not allowing smoking in the home was found among those 25-34 years old than among adults grouped into several older age categories.
- Education** No-smoking policies were most common in the homes of persons with four or more years of college education. At 82.9%, the prevalence for this group significantly surpassed the prevalence for any of the other lower education level groups.
- Household Income** Rules forbidding smoking in the home increased with increasing incomes. Adults with household incomes in the \$50,000 and above categories forbid smoking in their homes significantly more often than adults living in households with incomes below \$35,000.

Table 6.4 No smoking allowed in the home by demographic characteristics: WVBRFSS, 2006

Characteristic	Men			Women			Total		
	# Resp.	%	95% CI	# Resp.	%	95% CI	# Resp.	%	95% CI
TOTAL	1,474	64.3	61.3-67.2	2,271	66.3	63.9-68.7	3,745	65.3	63.4-67.2
Age									
18-24	66	*67.9	55.0-80.8	78	*62.5	50.1-75.0	144	65.3	56.3-74.2
25-34	146	75.3	67.9-82.8	261	72.3	66.5-78.1	407	73.8	69.1-78.5
35-44	230	64.1	57.4-70.8	366	65.8	60.3-71.3	596	65.0	60.6-69.3
45-54	325	57.7	51.8-63.5	425	65.0	60.1-69.9	750	61.4	57.6-65.2
55-64	367	60.1	54.6-65.6	463	63.6	58.8-68.3	830	61.8	58.2-65.5
65+	336	63.4	57.9-68.9	667	67.8	63.9-71.8	1,003	66.0	62.7-69.2
Education									
Less than H.S.	251	48.1	40.7-55.6	358	52.2	46.2-58.2	609	50.1	45.3-54.9
H.S. or G.E.D.	586	58.9	54.0-63.8	888	62.6	58.7-66.6	1,474	60.8	57.6-63.9
Some Post-H.S.	280	68.5	62.1-74.9	536	65.7	60.3-71.0	816	66.9	62.7-71.0
College Graduate	353	82.1	78.0-86.3	486	83.7	80.2-87.2	839	82.9	80.2-85.6
Income									
Less than \$15,000	166	49.1	39.8-58.4	412	55.3	49.3-61.2	578	53.1	48.1-58.2
\$15,000- 24,999	264	57.0	49.9-64.0	457	60.3	54.6-65.9	721	58.8	54.4-63.3
\$25,000- 34,999	213	65.2	58.2-72.3	277	62.1	55.8-68.5	490	63.8	59.0-68.6
\$35,000- 49,999	234	61.5	54.1-68.9	286	71.1	65.2-77.0	520	66.0	61.2-70.9
\$50,000- 74,999	222	72.9	66.4-79.4	271	74.5	68.3-80.6	493	73.7	69.2-78.2
\$75,000+	246	81.6	76.7-86.5	259	85.6	81.0-90.1	505	83.3	79.9-86.7

* Use caution when interpreting and reporting this specific estimate. See the detailed discussion of estimates in the Methodology section.