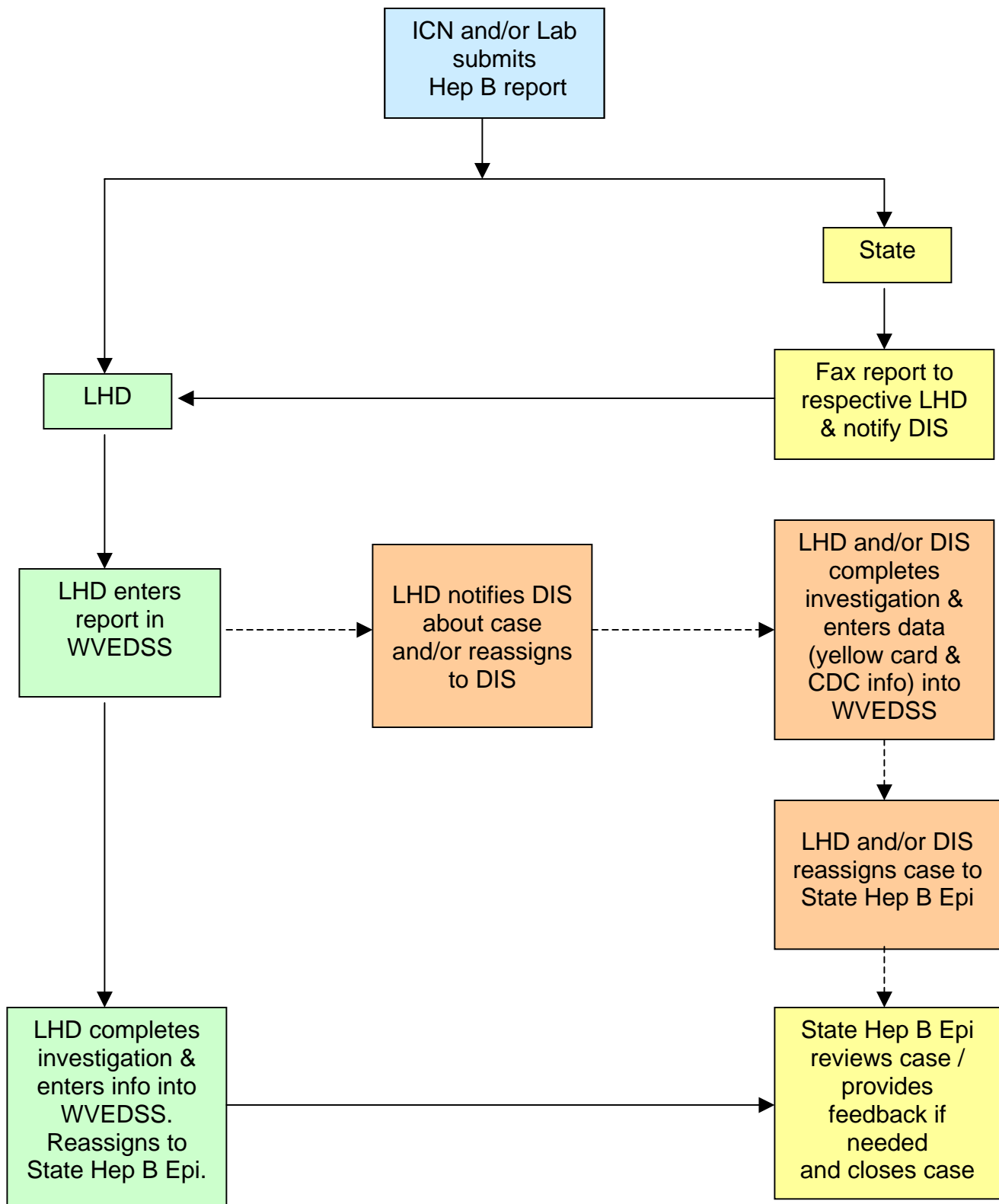


# Hepatitis B Reporting Flow Chart



- o Infectious Control Nurses (ICN) and/or laboratories will submit hepatitis B lab reports and other pertinent documents to their respective Local Health Departments (LHD).
- o If the State Health Department receives a lab or other documents, the State Hepatitis B epidemiologist will fax the labs and/or documents to the respective LHD and notify the respective Disease Investigation Specialist (DIS).
- o The LHD will enter all information received from the ICN and/or labs into West Virginia Electronic Disease Surveillance System (WVEDSS).
- o The LHD will complete the case investigation, enter all information into WVEDSS, change the investigation status to State Review and reassign the case to the State Hepatitis B epidemiologist.
- o If the LHD needs the DIS assistance, they will contact the DIS and reassign the case to their respective DIS. Reassignment should occur both verbally and in WVEDSS.
- o The DIS will complete the case investigation and work with the LHD to enter data into WVEDSS.
- o The LHD or the DIS will change the investigation status to State Review and reassign the case to the State Hepatitis B epidemiologist.
- o The State Hepatitis B epidemiologist will review the case, provide feedback if necessary and close the case.

**\*\*During the WVEDSS Pilot, please continue submitting hard copies of labs, Confidential Reportable Disease Case Reports (Yellow Card) and CDC Viral Hepatitis Case Report as well as entering data into WVEDSS.**